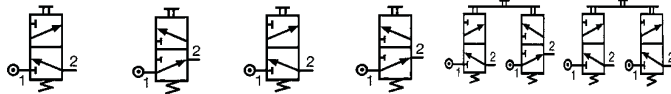


# 3/2 valves for manual actuators Ø 22 mm



3/2 valve supplied with screws for fixing the adaptor	Connection Ø 4	89 543 501	89 543 101	—	—	—	—	—
		89 543 701	89 543 201	—	—	—	—	—
Valve(s) 3/2 fixed on adaptor (supplied with adaptor not assembled)	Gas 1/8 Connection Ø 4	—	—	89 543 105	89 543 005	89 543 305	89 543 205	—
Adaptor for 3/2 valve on actuators Ø 22		—	—	—	—	—	—	24 679 702
Version		NC	NO	NC	NO	NC + NO	NC + NC	—

## Symbol

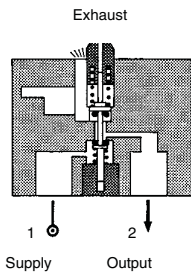


## Characteristics

Operating pressure	bar	0 → 10	0 → 10	0 → 10	0 → 10	0 → 10	0 → 10	—
Orifice diameter	mm	2	2	2	2	2	2	—
Flow at 4 bars	NI/min	90	90	90	90	90	90	—
Control force	N	12.6	12.6	12.6	12.6	12.6	12.6	—
Operating temperature in dry air	°C	-10 → +60	-10 → +60	-10 → +60	-10 → +60	-10 → +60	-10 → +60	—
Life	operations	1.5 x 10 <sup>6</sup>	1.5 x 10 <sup>6</sup>	1.5 x 10 <sup>6</sup>	1.5 x 10 <sup>6</sup>	1.5 x 10 <sup>6</sup>	1.5 x 10 <sup>6</sup>	—
Non-connectable exhaust		●	●	●	●	●	●	—
Weight	g	50	50	60	60	110	110	40

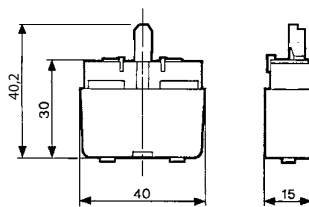
## Principle of operation

### NC version

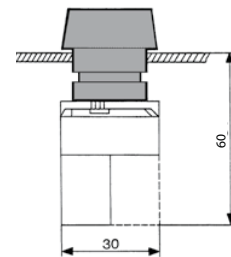


## Dimensions

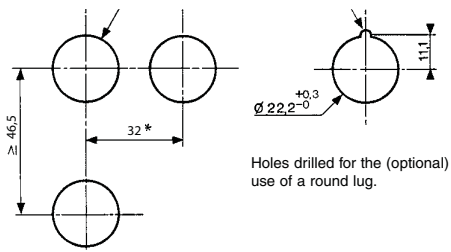
89 543 001 - 89 543 201  
89 543 501 - 89 543 701



## Ø 22 series



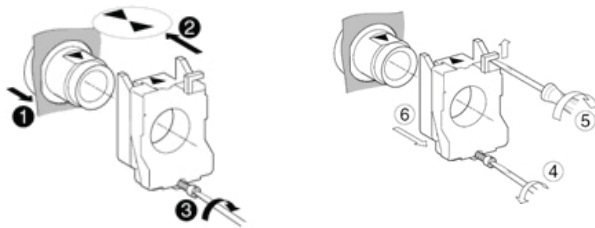
## Holes drilled in panel for actuators Ø 22 EN 50007








Holes drilled for the (optional) use of a round lug.

\* > 40 Ø 40 push-buttons  
\* > 45 for lever type rotary switches

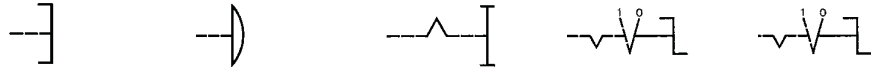
## Installation



# Actuators Ø 22 mm for manually operated valves

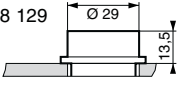
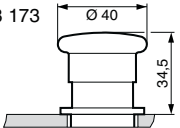
					
Push buttons	Red Green Black	24 678 129 24 678 128 24 678 127	24 678 173 — 24 678 172	24 678 171 — —	— — —
2-positions rotary switches		—	—	—	24 678 174
3-positions rotary switches		—	—	—	24 678 175
Function		Flush push contact	Emergency stop plastic Ø 40	Emergency stop Ø 40 mm push-turn	Black symmetrical actuator Long lever Black

## Symbol







## Position



Weight	g	30	45	45	45	45
Dimensions		24 678 127 - 24 678 128 24 678 129		24 678 171 - 24 678 172 24 678 173		
						

1

				
2-positions rotary switches	24 678 180	—	—	—
3-positions rotary switches	—	24 678 176	24 678 178	24 678 177
Function	RONIS key 455 removable in position 0	Black symmetrical actuator	Black symmetrical actuator with return	Long lever Black
				24 678 179
				Black Long lever, spring to center
				24 678 182
				RONIS key 455 remov. in pos. 0 3 positions with spring to center
				24 678 181
				RONIS key 455 removable in position 0 3 fixed positions

## Symbol



## Position



Weight	70	45	45	16	45	70	70
Dimensions	24 678 174 - 24 678 176 24 678 178		24 678 175 - 24 678 177 24 678 179		24 678 180 - 24 678 181 24 678 182		
	