



MICRO SWITCH

FREEPORT, ILLINOIS, U. S. A.
A DIVISION OF HONEYWELL

FED. MFG. CODE 91929

OPERATOR INDICATOR UNITS BARRIER MOUNT

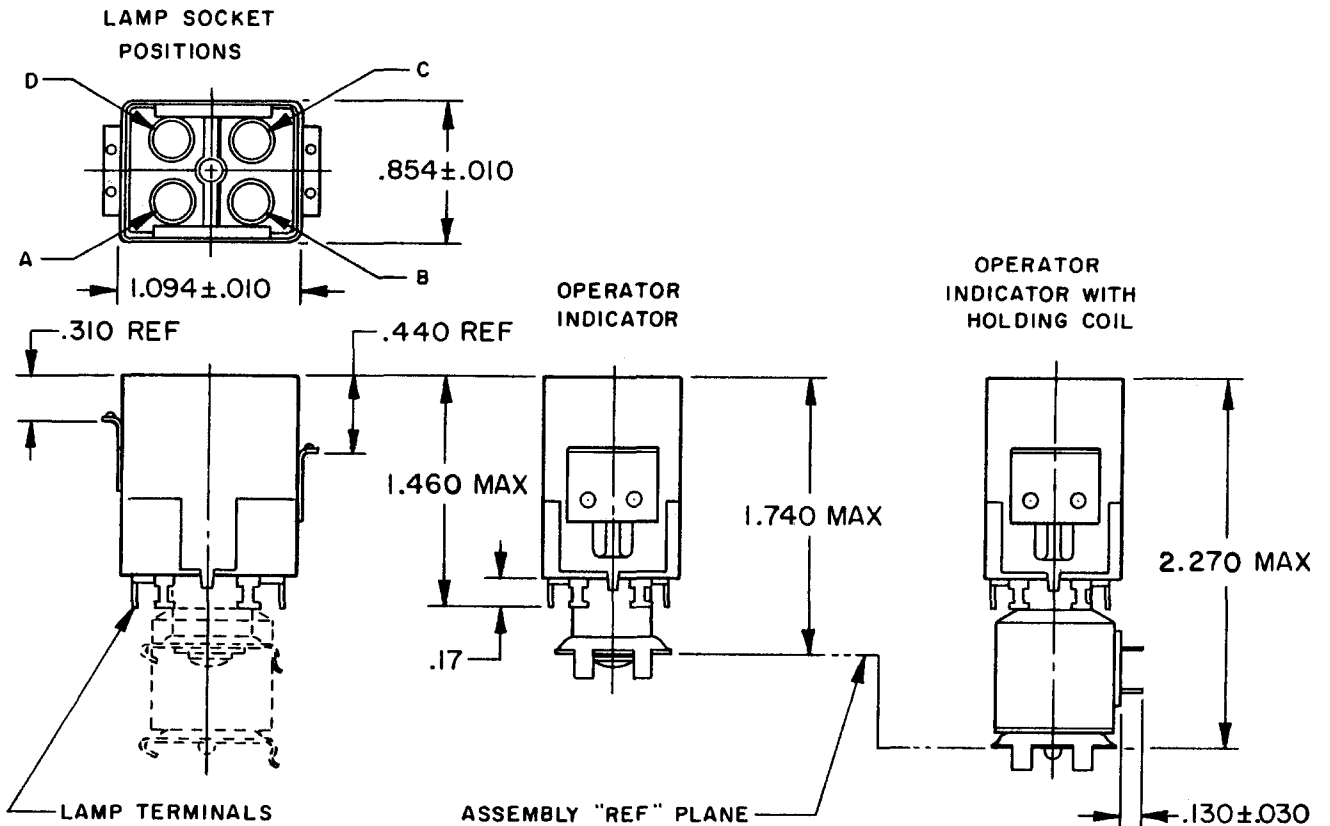
CATALOG LISTING
2C200 SERIES

CHART 4

THIS DRAWING COVERS A PROPRIETARY ITEM AND IS THE PROPERTY OF MICRO SWITCH, A DIVISION OF MINNEAPOLIS-HONEYWELL REGULATOR CO. THIS DRAWING IS NOT TO BE COPIED OR USED WITHOUT THE APPROVAL OF MICRO SWITCH.

CATALOG LISTING
2C200 SERIES CHART 4
PAGE 1 OF 1
ISSUE **M**
13

REPLACE
RELEASE NO. SR 11638 SR 11835
CHECK 18JAN66
CHECK CSK
CHECK 18JAN66
CHECK 15D
CHECK 19 JAN 65
DRAWN
O M W



LAMP TERMINAL DESIGNATION A, B, C, D
TWO TERMINALS PER LAMP

KEYWAY FOR ORIENTATION OF SWITCH UNITS

NOTE-
1 - TERMINALS ARE PLATED FOR SOLDERING
2 - RELAMPABLE FROM FRONT OF PANEL WITHOUT TOOLS

LAMP SOCKET POSITIONS	CATALOG LISTINGS				SCALE DO NOT SCALE PRINT UNLESS OTHERWISE SPECIFIED DIMENSIONS ARE IN INCHES TOLERANCES ARE: ONE PLACE (.0) ± .030 TWO PLACE (.00) ± .015 THREE PLACE (.000) ± .005 ANGLES ±	
	OPERATOR INDICATOR	OPERATOR INDICATOR WITH HOLDING COIL				
		6 VDC	12 VDC	28 VDC		48 VDC
A, C	2C201	ⓑ		ⓓ	Ⓐ	
A, B, C, D	2C203	ⓒ		2C227	Ⓑ	
A, C	Ⓐ					
A, C	Ⓐ					
					WEIGHT	

RASTER



MICRO SWITCH

FREEPORT, ILLINOIS, U.S.A.
A DIVISION OF HONEYWELL

FED. MFG. CODE 91929

OPERATOR INDICATOR UNITS BARRIER MOUNT

CATALOG LISTING
2C200 SERIES

CHART 4

THIS DRAWING COVERS A PROPRIETARY ITEM AND IS THE PROPERTY OF MICRO SWITCH, A DIVISION OF MINNEAPOLIS-HONEYWELL REGULATOR CO. THIS DRAWING IS NOT TO BE COPIED OR USED WITHOUT THE APPROVAL OF MICRO SWITCH.

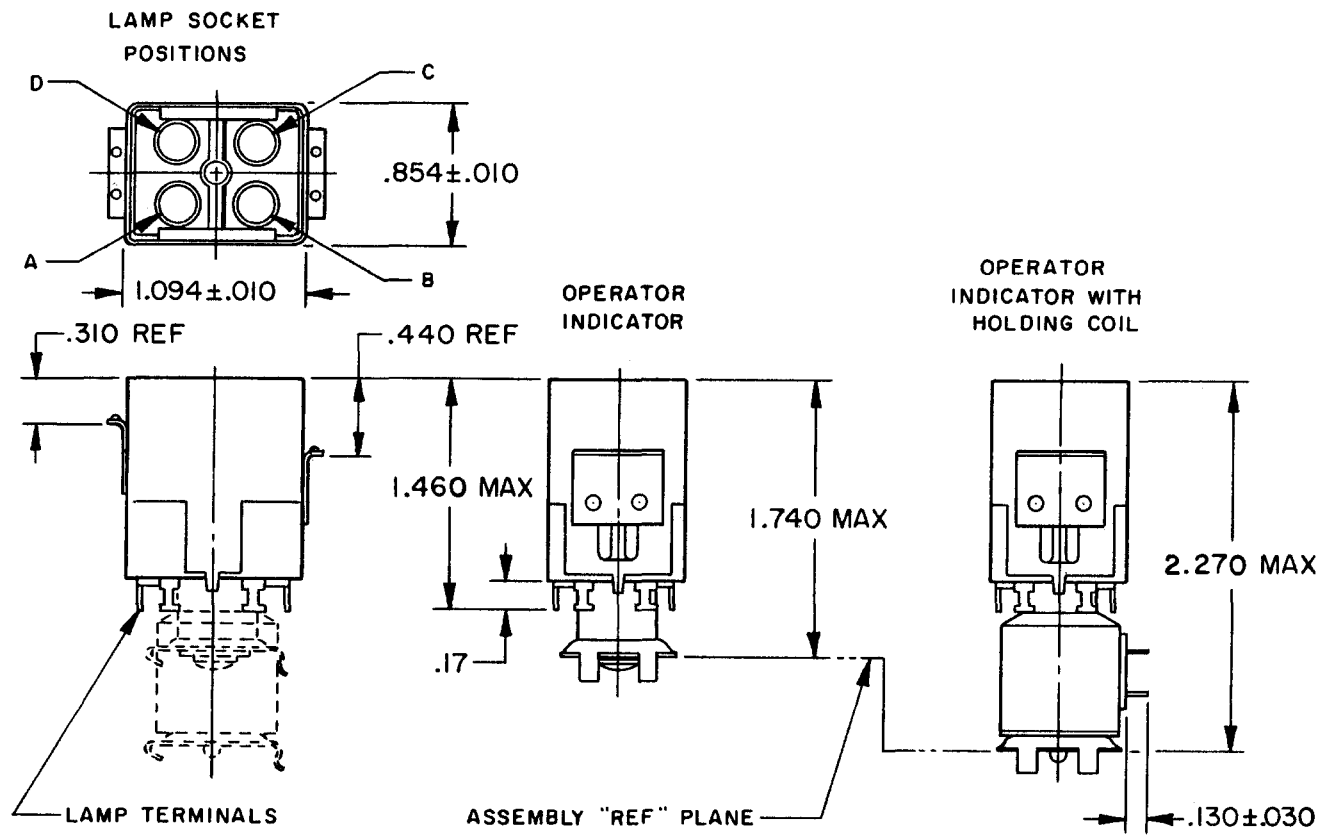
CATALOG LISTING
2C200 SERIES CHART 4
PAGE 1 OF 1

ISSUE
M
12

REVISIONS

A	CO-82436 JALA 6 FEB 96
B	CO-92836 CSL 18 AUG 98
C	CO-95794 CSL 28 JAN 00

REPLACES
RELEASE NO. SR 11638 SR 11639
CHECK CSK 18JANGG
CHECK CSK 18JANGG
CHECK LBD 65
O M W 19 JAN 65



LAMP TERMINAL DESIGNATION A, B, C, D
TWO TERMINALS PER LAMP

KEYWAY FOR ORIENTATION OF SWITCH UNITS

NOTE -
1 - TERMINALS ARE PLATED FOR SOLDERING
2 - RELAMPABLE FROM FRONT OF PANEL WITHOUT TOOLS

LAMP SOCKET POSITIONS	CATALOG LISTINGS				SCALE		
	OPERATOR INDICATOR	OPERATOR INDICATOR WITH HOLDING COIL				DO NOT SCALE PRINT	
		6 VDC	12 VDC	28 VDC	48 VDC	UNLESS OTHERWISE SPECIFIED	
A, C	2C201	(B)		2C225	(A)	DIMENSIONS ARE IN INCHES	
A, B, C, D	2C203	(C)		2C227	(B)	TOLERANCES ARE:	
A, C	(A)					ONE PLACE (.01)	± .030
A, C	(A)					TWO PLACE (.001)	± .015
						THREE PLACE (.000)	± .005
						ANGLES	± .005
						WEIGHT	

FORMTEK

Mouser Electronics

Authorized Distributor

Click to View Pricing, Inventory, Delivery & Lifecycle Information:

[Honeywell:](#)

[2C201](#) [2C203](#)