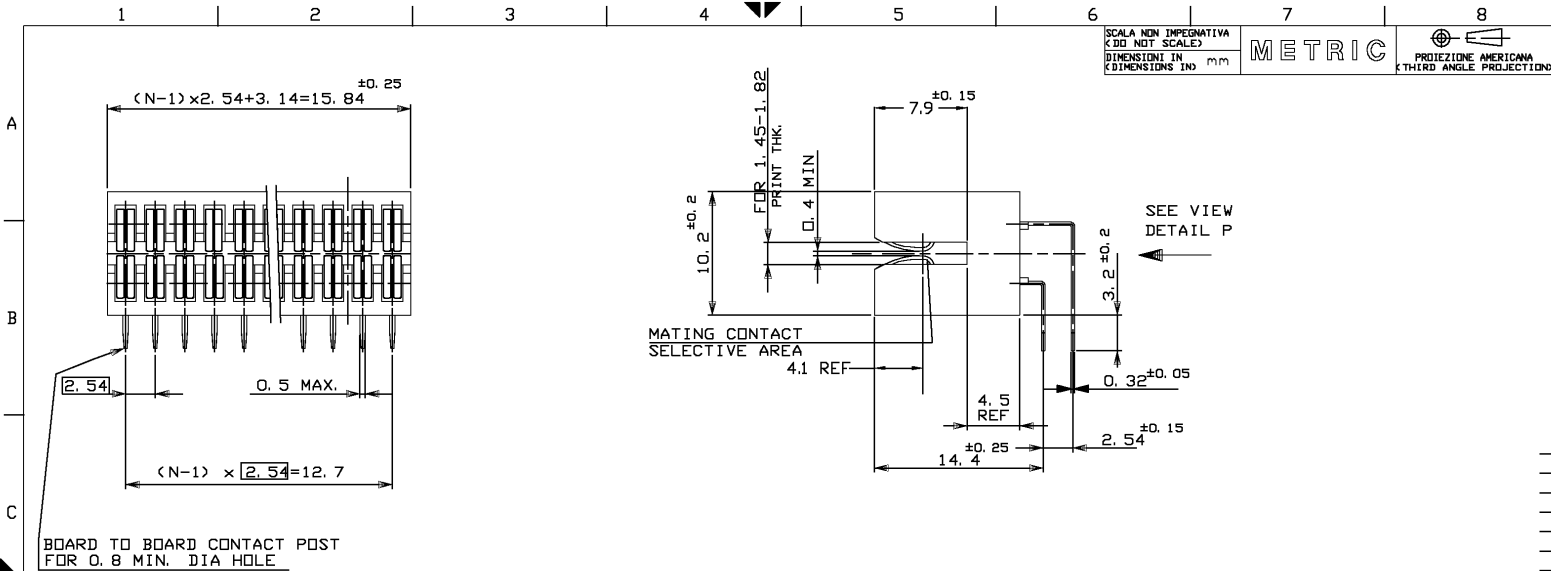


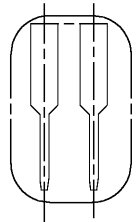
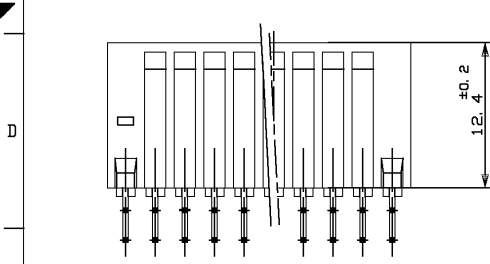
SCALA NON IMPERATIVA
(DO NOT SCALE)
DIMENSIONI IN
DIMENSIONS IN

METRIC

PROIEZIONE AMERICANA
(THIRD ANGLE PROJECTION)



BOARD TO BOARD CONTACT POST
FOR 0.8 MIN. DIA HOLE



ENLARGE VIEW
DETAIL P

NOTES:

1. PRODUCT SPECIFICATION : 108-19041
2. PACKAGING: ON PLASTIC TUBES, BOXED

CONTACT: 0.4µm MIN SELECTIVE GOLD PLTD ON MATING CONTACT AREA AND 3.0µm MIN TIN PLTD ON CONTACT POST, OVER 1.25µm MIN Ni PLTD UNDERLAYER	HOUSING: THERMOPLASTIC POLYESTER 20% GF, UL94-V0 COLOUR GREEN CONT. 1 PH. BRONZE HOG	215391-6
FINITURA / COLORE (FINISH / COLOUR)	MATERIALE (MATERIAL)	NUMERO (PART NUMBER)

CUSTOMER DWG. FOR REFERENCE ONLY		DISEGNO PER CLIENTE SOLD PER RIFERIMENTO	
-THIS DRAWING IS UNPUBLISHED-		RELEASE FOR PUBLICATION	
© COPYRIGHT 19 BY AMP INCORPORATED, HARRISBURG, PA. ALL INTERNATIONAL RIGHTS RESERVED. AMP PRODUCTS MAY BE COVERED BY U.S. AND FOREIGN PATENT AND/OR PATENT PENDING		19	
TOLLERANZE SE NON DIVERSAMENTE SPECIFICATE	DIA. ISOLANTE (INS. DIA. RANGE)	RANGO FILD (WIRE RANGE)	SCALA (SCALE)
± 0.3	-	-	-
J3 REVISED FOR ET00-0047-04	D. C. CONN. ANGOLI 2003 (WIRE)	AMP ITALIA S.p.A. Corso F.lli. Cervi, 18 COLLENO (TORINO)	
J2 REVISED FOR ET00-0147-03	D. C. BLAKE 2003 (WIRE)	6 PDS. 2.54 CENTRE AMP-EDGE CONN. ASS'Y DUAL	
J1 REVISED FOR ET00-0115-03	D. C. DATA (DR.) 2003 (WIRE)	LOADED WITH B. T. B. CONT. 90° VERSION	
J REVISED FOR ET00-0068-03	PB 2003 (WIRE)	LDG. SIZE NUMBER (DWG NO)	
H REDRAWN BY CAD ET00-0278	CS 2003 (WIRE)	REV. (REV. NO)	
REV. (REVISION RECORD)	APP. DATA (APP. DATE)	I A3 C-215391 J3 1 OF 1	

DISTRIBUZIONE
(PRINT DIST.)