



MICRO SWITCH

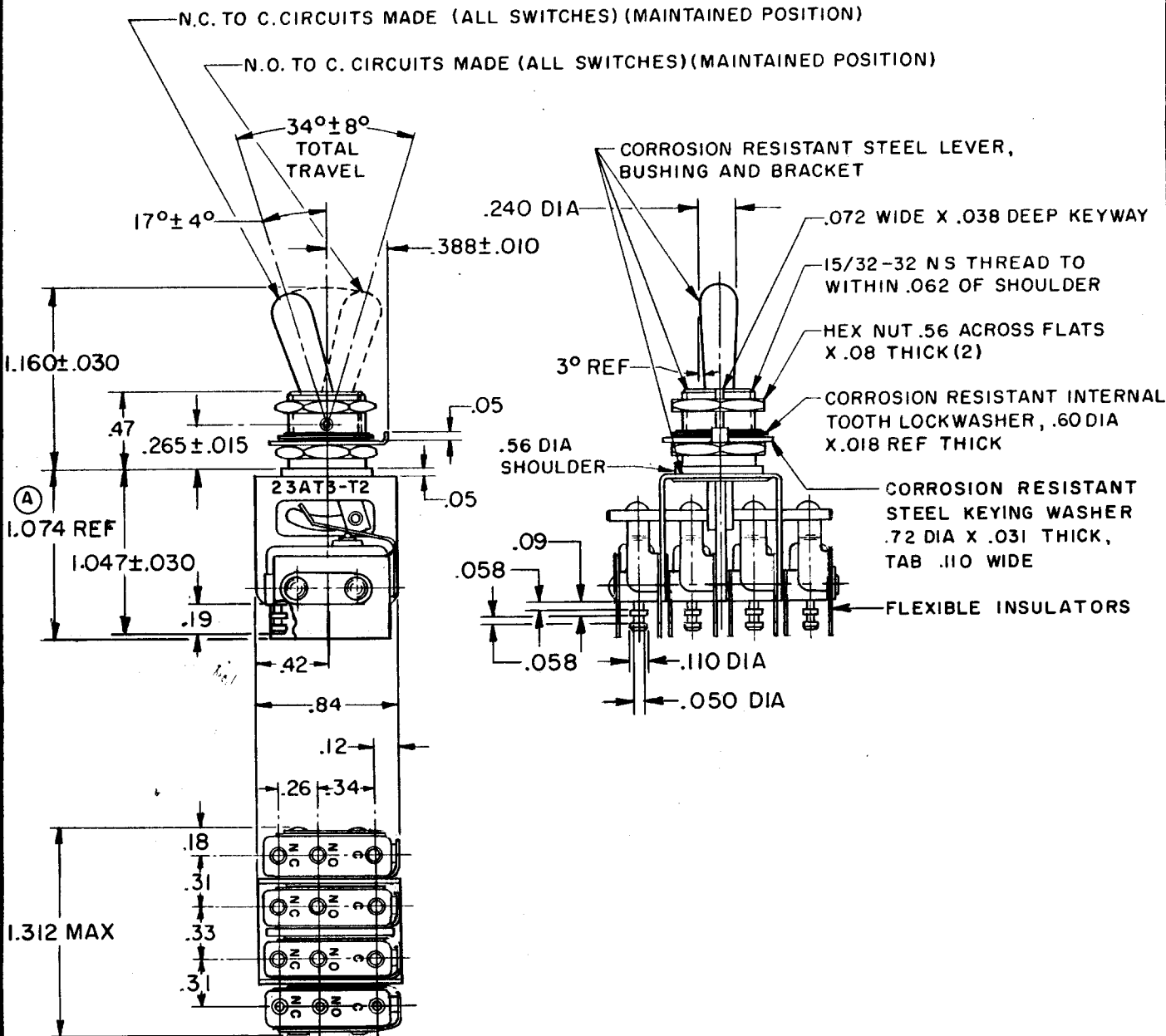
FREEPORT ILLINOIS
A DIVISION OF HONEYWELL

FED. MFG. CODE 91929

ASSEMBLY- TOGGLE SWITCH

CATALOG LISTING
23AT3-T2

23AT3-T2
 M
 DRAWING NUMBER
 X
 ISSUE
 84
 REVISIONS
 A CO 19659
 M B F
 5 JAN 65
 B CO
 50566-B
 WJM
 6 MAY 82
 C CO 66089
 DAW
 5 FEB 91
 CHECK
 3, OCT '62
 E B
 CHECK
 3, OCT '62
 DAW
 CHECK
 2 OCT 62
 LMH
 DRAWN
 FO-90376



NOTE -
 1- UNIT INCLUDES CAT. LIST: ISMI-T2 BASIC SWITCH (4)
 2- TERMINALS ARE PLATED FOR SOLDERING
 3- SWITCHES DO NOT NECESSARILY OPERATE SIMULTANEOUSLY

THIS DRAWING COVERS A PROPRIETARY ITEM AND IS THE PROPERTY OF MICRO SWITCH, A DIVISION OF MINNEAPOLIS-HONEYWELL REGULATOR CO. THIS DRAWING IS NOT TO BE COPIED OR USED WITHOUT THE APPROVAL OF MICRO SWITCH.

| CHARACTERISTICS | ELECTRICAL DATA | SCALE FULL |
|-----------------|---|---|
| | CONTACT ARRANGEMENT S P D T (4) | DO NOT SCALE PRINT |
| | 250 VAC ----- 5 AMP 30 VOLTS DC RATING | UNLESS OTHERWISE SPECIFIED DIMENSIONS ARE IN INCHES TOLERANCES ARE: |
| | INDUCTIVE ----- SEA LEVEL ----- 3 AMP 50,000 FT ----- 2.5 AMP RESISTIVE ----- SEA LEVEL ----- 5 AMP 50,000 FT ----- 5 AMP MAXIMUM INRUSH ----- 24 AMP | ONE PLACE (.0) ±.030 TWO PLACE (.00) ±.015 THREE PLACE (.000) ±.005 ANGLES ± |
| | | WEIGHT |