

PRELIMINARY

2.45 GHz Antenna

P/N 2450AT42D0100

Detail Specification: 11/12/07

Page 1 of 4

General Specifications

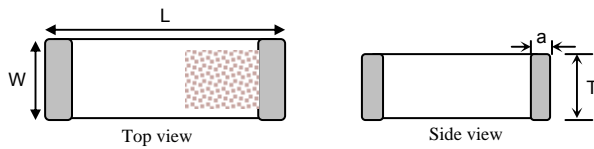
Part Number	2450AT42D0100
Frequency Range	2400 - 2500 Mhz
Peak Gain	0.5 dBi typ. (XZ-total)
Average Gain	-2.0 dBi typ. (XZ-total)
Return Loss	6.0 dB min.

Input Power	3W max.
Impedance	50 Ω
Operating Temperature	-40 to +85°C
Reel Quantity	2,000

No.	Function	Terminal Configuration
1	Feeding Point	
2	NC	

Mechanical Dimensions

	In	mm
L	0.197 ± 0.008	5.00 ± 0.20
W	0.079 ± 0.008	2.00 ± 0.20
T	0.118 +.004/-0.008	3.00 +0.1/-0.2
a	0.020 ± 0.012	0.50 ± 0.30

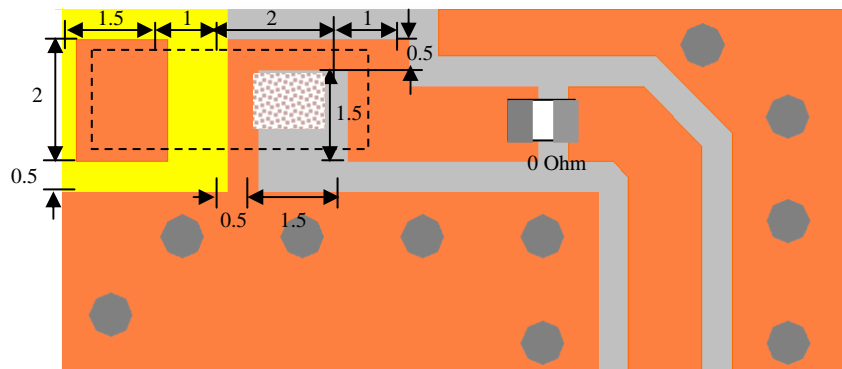


Mounting Considerations

Mount these devices with brown mark facing up. Units: mm

* Line width should be designed to provide 50 Ω impedance matching characteristics.

Without Matching Circuit



(Matching circuit and component values will be different, depending on PCB layout)

Johanson Technology, Inc. reserves the right to make design changes without notice.
All sales are subject to Johanson Technology, Inc. terms and conditions.



www.johansontechnology.com

4001 Calle Tecate • Camarillo, CA 93012 • TEL 805.389.1166 FAX 805.389.1821

2007 Johanson Technology, Inc. All Rights Reserved

PRELIMINARY

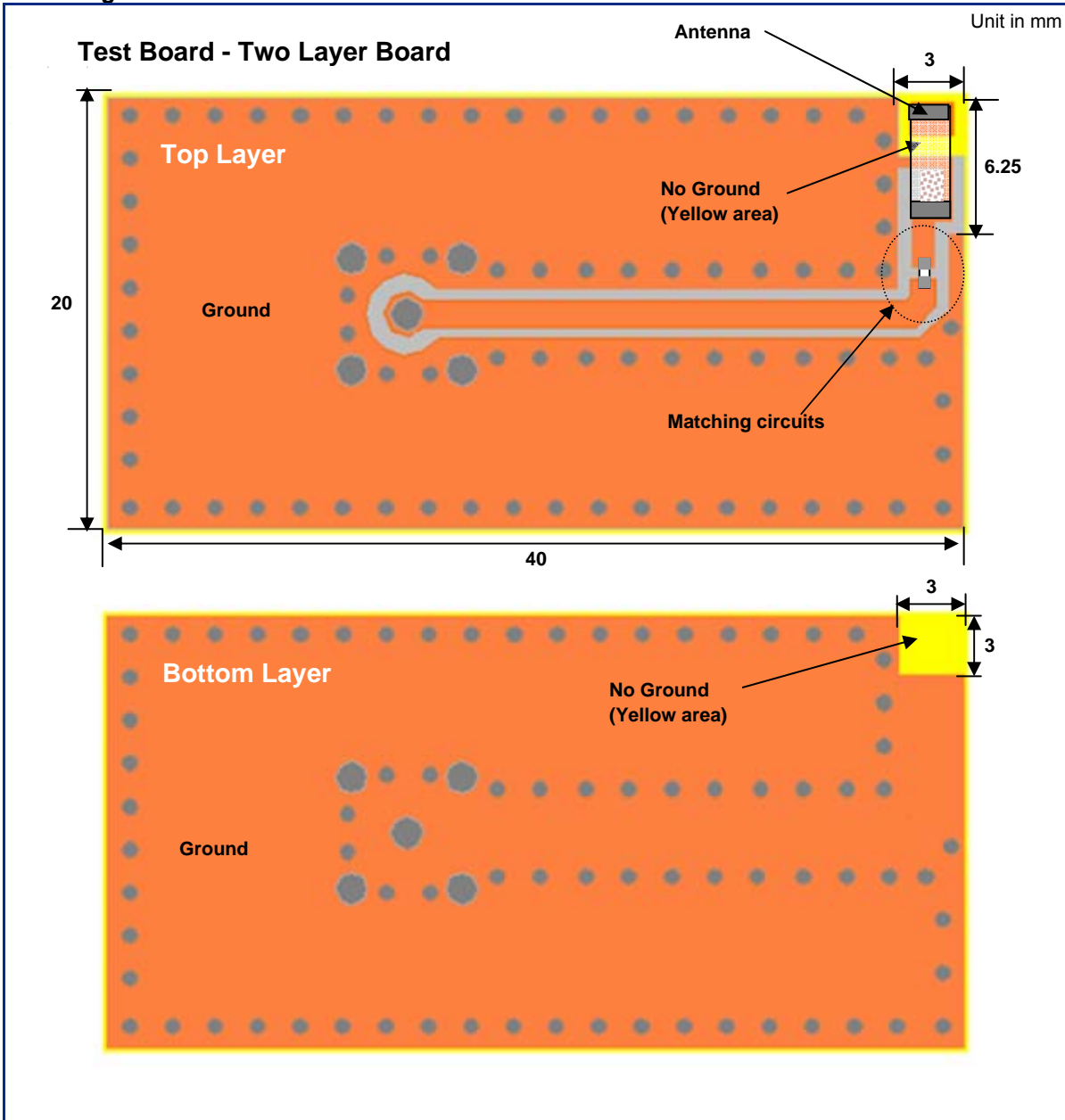
2.45 GHz Antenna

P/N 2450AT42D0100

Detail Specification: 11/12/07

Page 2 of 4

Mounting Considerations



Johanson Technology, Inc. reserves the right to make design changes without notice.
All sales are subject to Johanson Technology, Inc. terms and conditions.



www.johansontechnology.com

4001 Calle Tecate • Camarillo, CA 93012 • TEL 805.389.1166 FAX 805.389.1821

2007 Johanson Technology, Inc. All Rights Reserved

PRELIMINARY

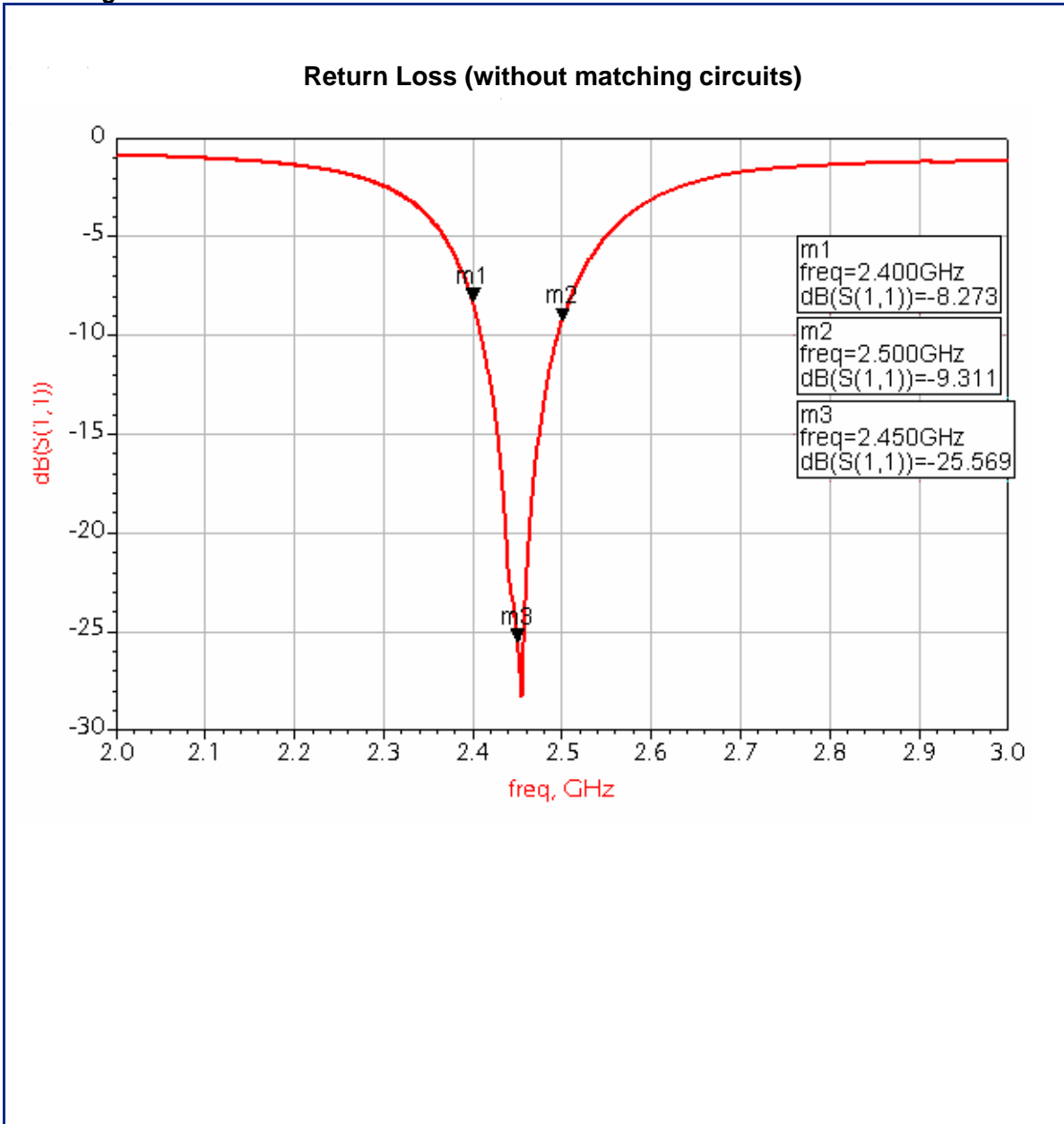
2.45 GHz Antenna

P/N 2450AT42D0100

Detail Specification: 11/12/07

Page 3 of 4

Mounting Considerations



Johanson Technology, Inc. reserves the right to make design changes without notice.
All sales are subject to Johanson Technology, Inc. terms and conditions.



www.johansontechnology.com

4001 Calle Tecate • Camarillo, CA 93012 • TEL 805.389.1166 FAX 805.389.1821

2007 Johanson Technology, Inc. All Rights Reserved

PRELIMINARY

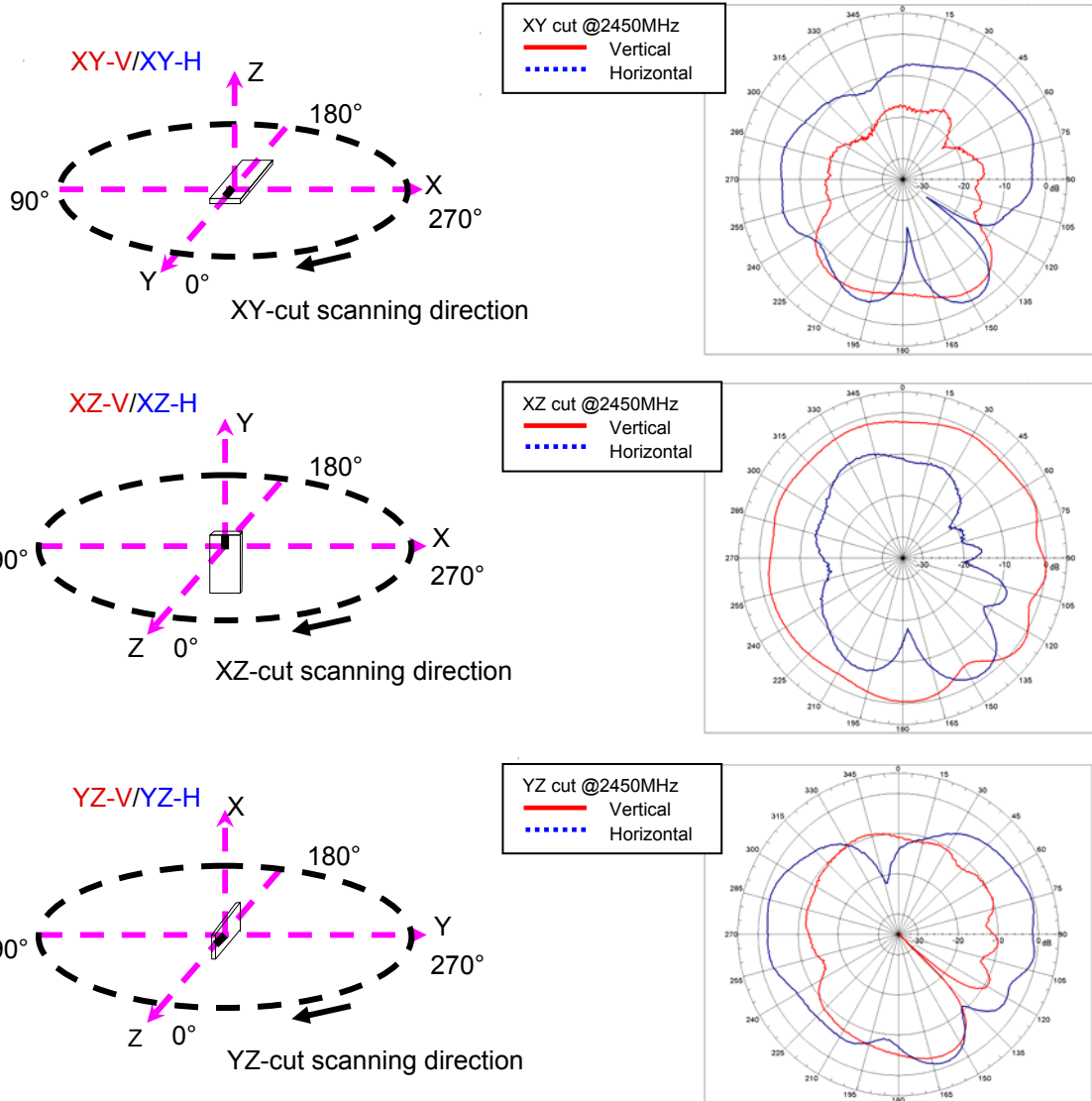
2.45 GHz Antenna

Detail Specification: 11/12/07

P/N 2450AT42D0100

Page 4 of 4

Typical Radiation Patterns



Johanson Technology, Inc. reserves the right to make design changes without notice.
All sales are subject to Johanson Technology, Inc. terms and conditions.



www.johansontechnology.com

4001 Calle Tecate • Camarillo, CA 93012 • TEL 805.389.1166 FAX 805.389.1821

2007 Johanson Technology, Inc. All Rights Reserved