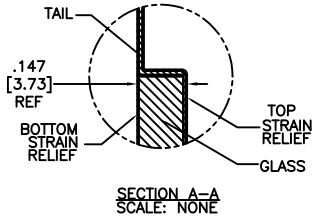


OGA DIAGONAL: 18.25 [463.63]
 VA DIAGONAL: 17.54 [445.50]
 PA DIAGONAL: 16.54 [420.12]

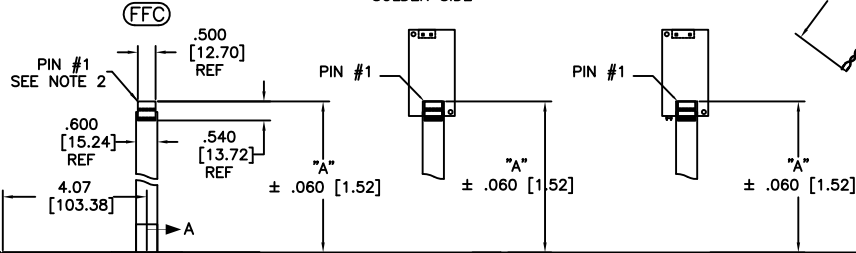
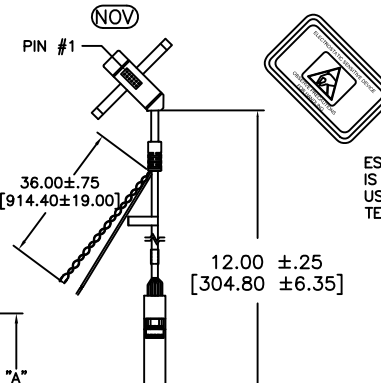
TOP LEVEL NUMBER	SKU 98 NUMBER	TYPE	DIM "A" (TOTAL GLASS TO CONNECTOR)	A/G FINISH	PROD SPEC
17-8421-203	98-0003-2589-8	FFC	4.27" [108.46]	AG500	23655
17-8421-221	98-0003-2596-3	SER	4.27" [108.46]	AG500	23655
17-8421-204	98-0003-2590-6	FFC	6.00" [152.40]	AG500	23655
17-8421-223	98-0003-2597-1	SER	6.00" [152.40]	AG500	23655
17-8421-227	98-0003-2599-7	SER	8.00" [203.20]	AG500	23655
17-8421-205	98-0003-2591-4	FFC	8.00" [203.20]	AG500	23655
17-8421-206	98-0003-2190-5	NOV	SEE DWG	AG500	23655
17-8421-218	98-0003-2594-8	USB R	4.27" [108.46]	AG500	23655
17-8421-220	98-0003-3151-6	USB R	6.00" [152.40]	AG500	23655
17-8421-226	98-0003-3152-4	USB R	8.00" [203.20]	AG500	23655
17-8421-230	98-0003-2276-2	HID M	8.00" [203.20]	AG500	23655



(HID M)
 EXII-7730HC
 98-0003-2813-2
 HID CONTROLLER
 SOLDER SIDE

(USB R)
 EXII-7760UC
 98-0003-2814-0
 USB CONTROLLER
 SOLDER SIDE

(SER)
 EXII-7720SC
 98-0003-2217-6
 SERIAL CONTROLLER
 SOLDER SIDE



.147 ± .020 [3.73 ± .51]
 TOTAL THICKNESS
 OF GLASS, CABLE
 AND STRAIN RELIEF

11.622 [295.20] OUTER GLASS AREA
 11.082 [281.48] VIEWING AREA
 10.455 [265.56] PRECISION AREA

.240 ± .020 [6.10 ± .51]
 .629 [15.98]
 12.817 [325.55] PRECISION AREA
 13.595 [345.31] VIEWING AREA
 14.075 [357.51] OUTER GLASS AREA

PINOUT	
1	LL
2	UL
3	SHLD
4	UR
5	LR

REV	CHANGE NOTICE	DATE	DRW
06	REVISED PER CO 030452	5/09	SB
05	REVISED PER CO 028945	5/08	SEB
04	REVISED PER CO 028873	5/08	SEB

- NOTES:
- WEIGHT OF GLASS IN GRAMS: 804 ± 10%
 - 5 PIN AMP CONNECTOR LATCH STYLE HOUSING P/N: 487526-4
 TIN CONTACTS P/N: 2-487406-4
 HOUSING ORIENTED WITH LATCH DOWN

UNITS INCHES [MM]

TOLERANCES UNLESS OTHERWISE SPECIFIED
 .X ±
 .XX ±.03 [.76]
 .XXX ±.015 [.38]
 ANGLES ±1°

THIRD ANGLE PROJECTION

DO NOT SCALE DRAWING

SCALE 1 = 1

3M 3M TOUCH SYSTEMS
 METHUEN, MA
 USA

© COPYRIGHT 2004
 THIS DOCUMENT IS COPYRIGHTED PROPERTY OF THE 3M COMPANY AND MAY NOT BE REPRODUCED WITHOUT 3M WRITTEN PERMISSION OR USED OR DISCLOSED FOR OTHER THAN 3M AUTHORIZED PURPOSES.

DRAWN K CROWLEY 08/05

TITLE

MARKETING DRAWING
 SCT32NN 17.54"

CAD FORMAT AUTOCAD SHEET 1 OF 1

SIZE C DOCUMENT NO. 28165-MKT REV 06