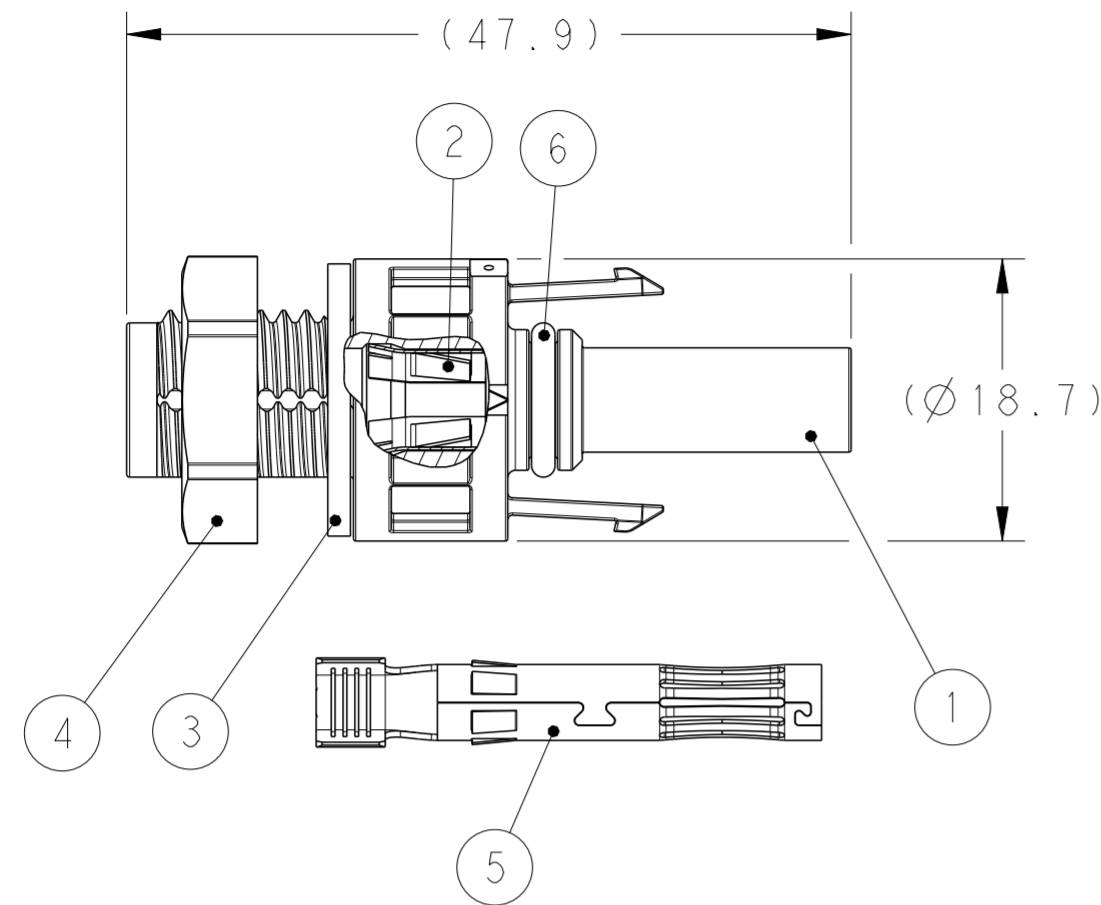
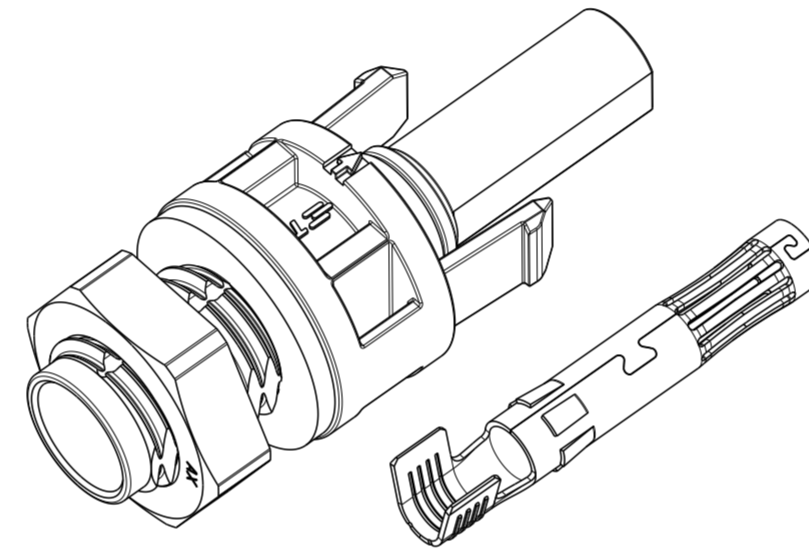
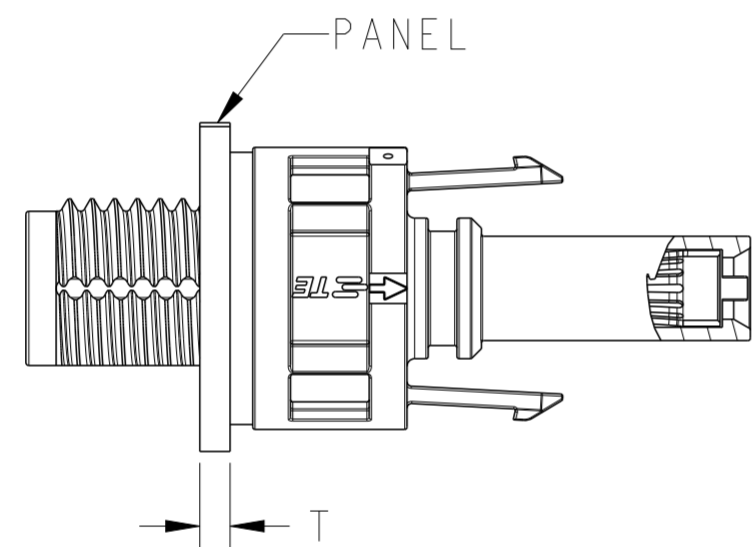


THIS DRAWING IS UNPUBLISHED. RELEASED FOR PUBLICATION 20  
 © COPYRIGHT 20 TE CONNECTIVITY ALL RIGHTS RESERVED.

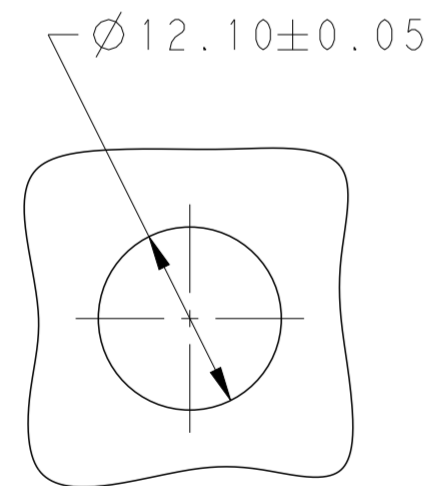
| LOC |     | DIST          |           | REVISIONS |      |  |  |
|-----|-----|---------------|-----------|-----------|------|--|--|
| P   | LTR | DESCRIPTION   | DATE      | DWN       | APVD |  |  |
|     | 1   | INITIAL       | 20MAY2013 | CW        | PY   |  |  |
|     | A   | ECR-14-000387 | 10JAN2014 | LW        | PY   |  |  |
|     | A1  | ECR-14-015136 | 10OCT2014 | LW        | PY   |  |  |
|     | A2  | ECR-15-005723 | 13APR2015 | KR        | TD   |  |  |



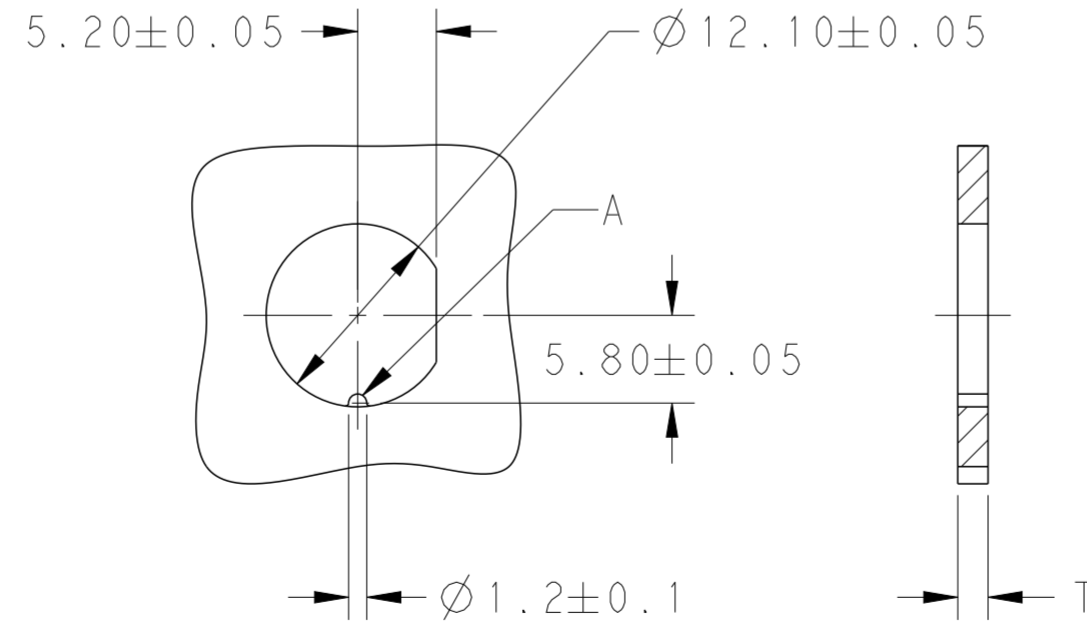
- △ 1 FLAT SEAL AND O-RING ASSEMBLED ON PIN HOUSING
- △ 2 NUT ENCLOSE LOOSELY
- △ 3 RECOMMENDED TIGHTENING TORQUE FOR NUT (ITEM NO.4) 1.0-1.2Nm WHEN ASSEMBLING AT PANEL WALL
- △ 4 USE ONLY CRIMPING TOOL OF TE CONNECTIVITY TO CRIMP CONTACT.
  - A. CRIMPING TOOL PN 6-1579014-9 WILL BE USED FOR CRIMPING THE CONTACTS HAVING WIRE SIZE 2.5mm<sup>2</sup> and 4.0mm<sup>2</sup>.
  - B. CRIMPING TOOL PN 6-1579014-8 WILL BE USED FOR CRIMPING THE CONTACTS HAVING WIRE SIZE 4.0mm<sup>2</sup> and 6.0mm<sup>2</sup>.



SCALE 2:1



ROUND HOLE



D HOLE

RECOMMENDED MOUNTING HOLE

T(PANEL THICKNESS): 2-6mm  
 FEATURE A DETERMINED BY CUSTOMER

| QUANTITY    | DESCRIPTION                                  | ITEM |
|-------------|--|------|
| 100         | PACKAGING                                    |      |
| 1-1971920-2 | ORDER-NO.                                    |      |
| 1           | O-RING                                       | 6    |
| 1           | SOCKET CONTACT, 2.5mm <sup>2</sup> /14AWG    | 5    |
| 1           | SOCKET CONTACT, 4~6mm <sup>2</sup> /10~12AWG | 5    |
| 1           | NUT M12x1.5                                  | 4    |
| 1           | FLAT SEAL                                    | 3    |
| 1           | METAL CLIP RING                              | 2    |
| 1           | SOCKET HOUSING                               | 1    |

THIS DRAWING IS A CONTROLLED DOCUMENT.

|                |  |                              |  |
|----------------|--|------------------------------|--|
| DIMENSIONS: mm | TOLERANCES UNLESS OTHERWISE SPECIFIED: | DWN: CHRIS WANG 28MAR2013    | TE Connectivity  |
|                |  | CHK: DANIEL TAO 28MAR2013    |  |
|                |  | APVD: PETER YIN 28MAR2013    |  |
|                |  | NAME: DANIEL TAO             |  |
|                |  | PRODUCT SPEC: 108-106122     | SOCKET CONNECTOR KITS  |
|                |  | APPLICATION SPEC: 114-106122 | PV4 PANEL MOUNTED CONNECTOR                                      |
| MATERIAL       |  | WEIGHT                       | SIZE: A2 CAGE CODE: 00779 DRAWING NO: C-1971920 RESTRICTED TO: - |
|                |  | Customer Drawing             | SCALE: 2:1 SHEET 1 OF 1 REV: A2                                  |