

PRELIMINARY

2.45GHz Balun/Filter Combination

P/N 2450FB39C100

Detail Specification: 06/05/07

Page 1 of 2

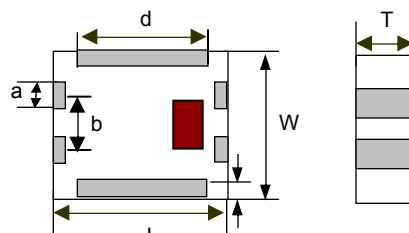
General Specifications

Part Number	2450FB39C100
Frequency (MHz)	2400 - 2500
Unbalanced Impedance	50 Ω
Balanced Impedance	100 Ω
Insertion Loss	3.0 dB max.
Return Loss	9.5 dB min.
Phase Difference	180° \pm 8
Amplitude Difference	1.0 dB max.

Attenuation (dB)	45 min. @ 880~960MHz
	38 min. @ 1710~1880 MHz
	35 min. @ 1880~1990 MHz
	20 min. @ 2110~2170 MHz
	30 min. @ 4800~5000MHz
30 ref. @ 7200~7500MHz	
Operating + Storage Temp	-40 to +85°C
Reel Quantity	3000
Power Capacity	1 watt max.
MSL	2

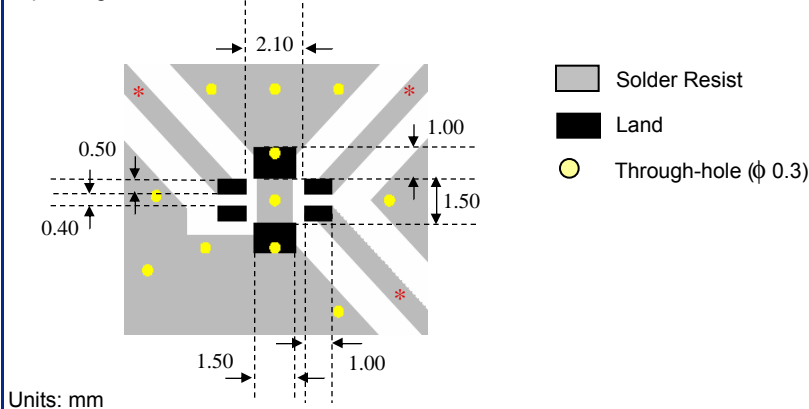
Mechanical Dimensions

	In	mm
L	0.098 \pm 0.008	2.50 \pm 0.20
W	0.079 \pm 0.008	2.00 \pm 0.20
T	0.043 \pm 0.004	1.10 \pm 0.10
a	0.016 \pm 0.008	0.40 \pm 0.20
b	0.031 \pm 0.008	0.80 \pm 0.20
c	0.012 +.004/-0.008	0.30 +0.1/-0.2
d	0.075 \pm 0.008	1.90 \pm 0.20



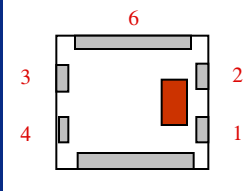
Mounting Considerations

* Line width should be designed to match 50 Ω characteristic impedance, depending on PCB material and thickness.



Terminal Configuration

No.	Function
1	Unbalanced Port
2	DC
3	Balanced Port
4	Balanced Port
5	GND
6	GND



Johanson Technology, Inc. reserves the right to make design changes without notice.
All sales are subject to Johanson Technology, Inc. terms and conditions.

PRELIMINARY

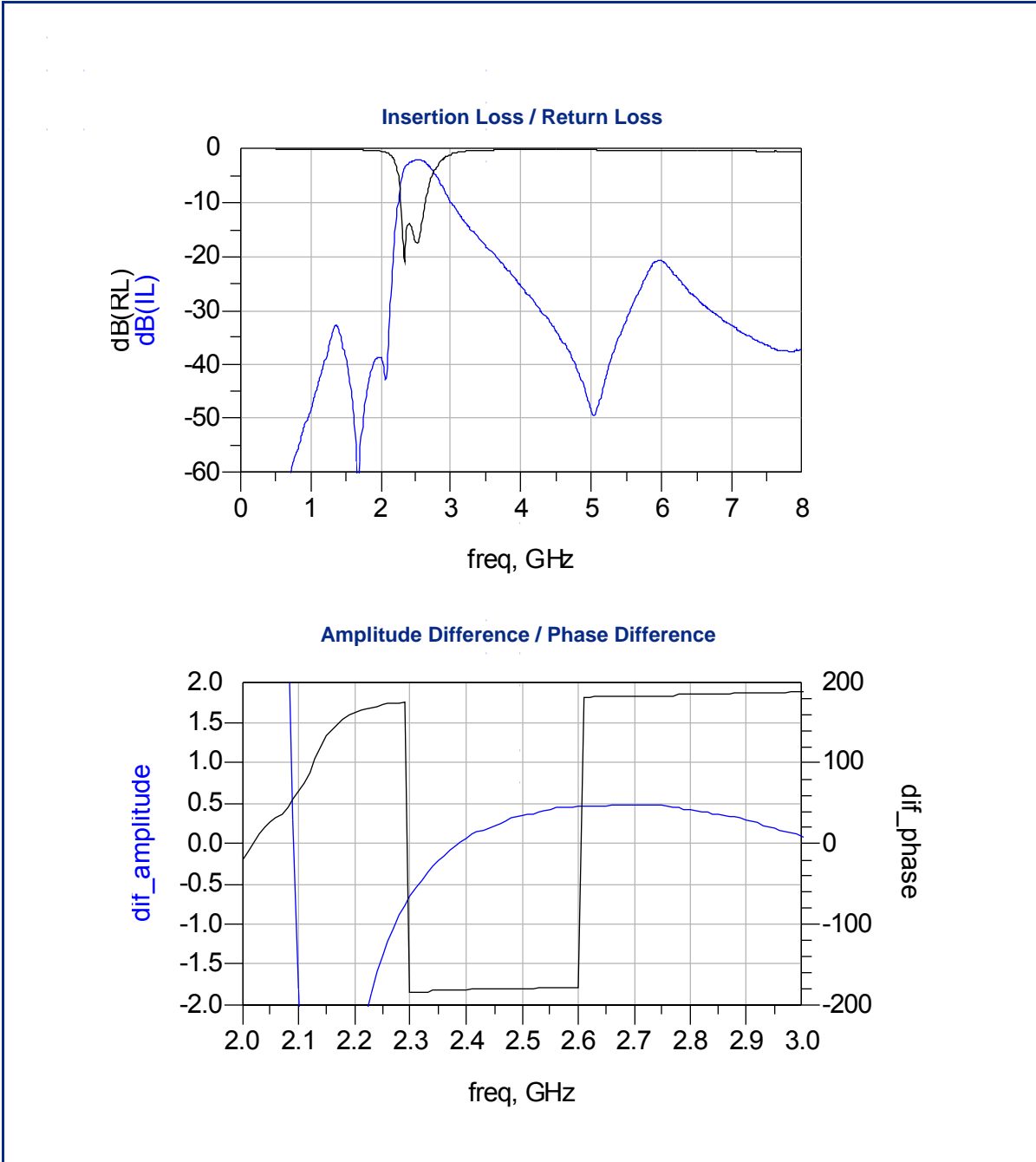
2.45GHz Balun/Filter Combination

P/N 2450FB39C100

Detail Specification: 06/05/07

Page 2 of 2

Typical Electrical Performance (T=25°C)



Johanson Technology, Inc. reserves the right to make design changes without notice.
All sales are subject to Johanson Technology, Inc. terms and conditions.



www.johansontechnology.com
4001 Calle Tecate • Camarillo, CA 93012 • TEL 805.389.1166 FAX 805.389.1821

2007 Johanson Technology, Inc. All Rights Reserved

Mouser Electronics

Authorized Distributor

Click to View Pricing, Inventory, Delivery & Lifecycle Information:

[Johanson:](#)

[2450FB39C100E](#)