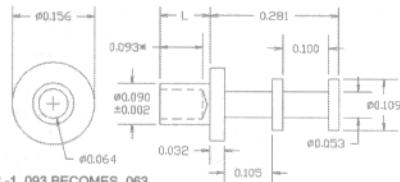


TERMINALS

10-203-X-01

MATERIAL: BRASS
FINISH: SILVER



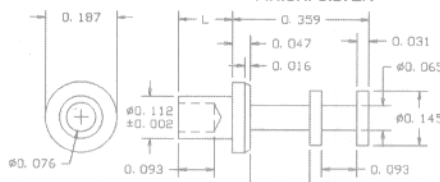
*FOR -.093 BECOMES .063

PART NO.	L	T	RECOMMENDED MOUNTING HOLE .094 DIA.(#42 DRILL)
10-203-1	.078	1/32	
10-203-2	.109	1/16	
10-203-3	.141	3/32	
10-203-4	.172	1/8	
10-203-6	.234	3/16	
10-203-8	.297	1/4	

TOOLS	
ANVIL	PUNCH
TA156-109-32	TP90-64

10-247-X-01

MATERIAL: BRASS
FINISH: SILVER

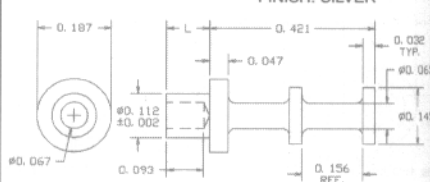


PART NO.	L	T	RECOMMENDED MOUNTING HOLE .116 DIA.(#32 DRILL)
10-247-1	.078	1/32	
10-247-2	.109	1/16	
10-247-3	.141	3/32	
10-247-4	.172	1/8	
10-247-6	.234	3/16	
10-247-8	.297	1/4	

TOOLS	
ANVIL	PUNCH
TA188-146-31	TP112-78

10-238-X-01

MATERIAL: BRASS
FINISH: SILVER

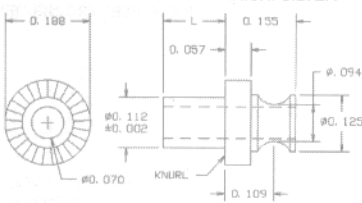


PART NO.	L	T	RECOMMENDED MOUNTING HOLE .116 DIA.(#32 DRILL)
10-238-1	.078	1/32	
10-238-2	.109	1/16	
10-238-3	.141	3/32	
10-238-4	.172	1/8	

TOOLS	
ANVIL	PUNCH
TA188-146-31	TP112-70

10-231-X-01

MATERIAL: BRASS
FINISH: SILVER



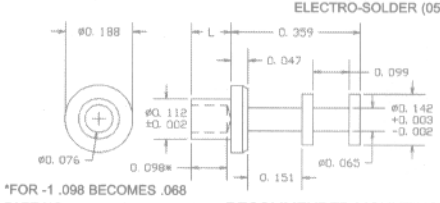
RECOMMENDED MOUNTING HOLE .116 DIA.(#32 DRILL)

PART NO.	L	T	RECOMMENDED MOUNTING HOLE .116 DIA.(#32 DRILL)
10-231-2	.105	1/16	
10-231-3	.135	3/32	
10-231-4	.165	1/8	

TOOLS	
ANVIL	PUNCH
TA188-126-55	TP112-70

10-204-X-XX

MATERIAL: BRASS
FINISH: SILVER (01)
ELECTRO-SOLDER (05)



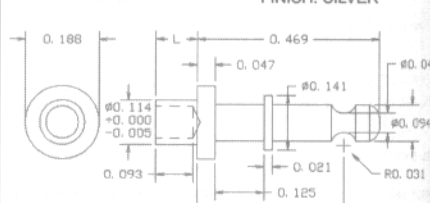
*FOR -.098 BECOMES .068

PART NO.	L	T	RECOMMENDED MOUNTING HOLE .116 DIA.(#32 DRILL)
10-204-1	.078	1/32	
10-204-2	.109	1/16	
10-204-3	.141	3/32	
10-204-4	.172	1/8	
10-204-6	.234	3/16	
10-204-8	.297	1/4	

TOOLS	
ANVIL	PUNCH
TA188-142-47	TP112-78

12-210-X-01

MATERIAL: BRASS
FINISH: SILVER

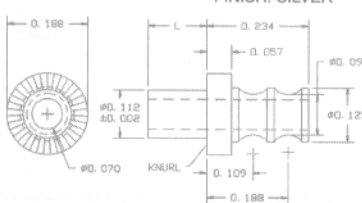


PART NO.	L	T	RECOMMENDED MOUNTING HOLE .206 DIA.(#5 DRILL)
12-210-2	.105	1/16	
12-210-3	.135	3/32	
12-210-4	.165	1/8	

TOOLS	
ANVIL	PUNCH
TA188-142-47	TP112-78

10-230-X-01

MATERIAL: BRASS
FINISH: SILVER



RECOMMENDED MOUNTING HOLE .116 DIA.(#32 DRILL)

PART NO.	L	T	RECOMMENDED MOUNTING HOLE .116 DIA.(#32 DRILL)
10-230-2	.105	1/16	
10-230-3	.135	3/32	
10-230-4	.165	1/8	

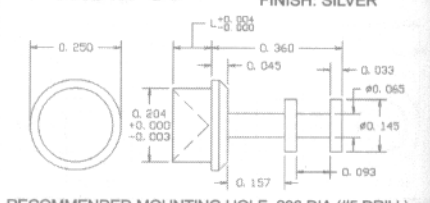
TOOLS	
ANVIL	PUNCH
TA188-126-55	TP112-70

DON'T SEE IT HERE?

Call us and ask for Applications Engineering or email them at engineering@concord-elex.com

11-226-X-01

MATERIAL: BRASS
FINISH: SILVER

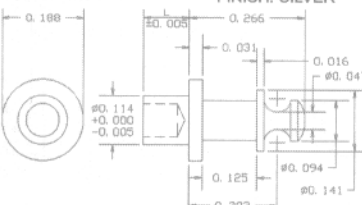


PART NO.	L	T	RECOMMENDED MOUNTING HOLE .266 DIA.(#17/64 DRILL)
11-226-1	.075	1/32	
11-226-2	.105	1/16	
11-226-3	.135	3/32	
11-226-4	.165	1/8	

TOOLS	
ANVIL	PUNCH
TA250-145-45	TP210-180

12-212-X-01

MATERIAL: BRASS
FINISH: SILVER

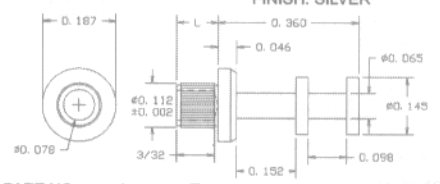


PART NO.	L	T	RECOMMENDED MOUNTING HOLE .116 DIA.(#32 DRILL)
12-212-1	.075	1/32	
12-212-2	.105	1/16	
12-212-3	.135	3/32	
12-212-4	.165	1/8	

TOOLS	
ANVIL	PUNCH
TA188-146-31	TP112-78

13-205-X-01

MATERIAL: BRASS
FINISH: SILVER

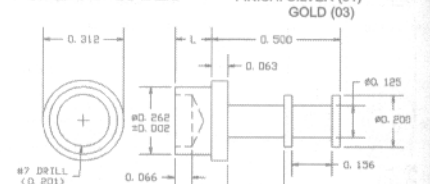


PART NO.	L	T	RECOMMENDED MOUNTING HOLE .116 DIA.(#32 DRILL)
13-205-1	.075	1/32	
13-205-2	.105	1/16	
13-205-3	.135	3/32	
13-205-4	.165	1/8	
13-205-5	.195	5/32	
13-205-6	.230	3/16	

TOOLS	
ANVIL	PUNCH
TA188-146-31	TP112-78

10-211-X-XX

MATERIAL: BRASS
FINISH: SILVER (01)
GOLD (03)

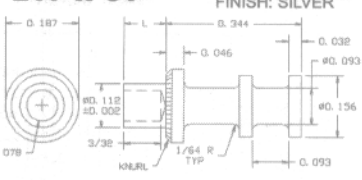


PART NO.	L	T	RECOMMENDED MOUNTING HOLE .266 DIA.(#17/64 DRILL)
10-211-2	.109	1/16	
10-211-3	.141	3/32	
10-211-4	.172	1/8	
10-211-6	.234	3/16	
10-211-8	.297	1/4	

TOOLS	
ANVIL	PUNCH
TA312-200-62	TP262-201

13-217-X-01

MATERIAL: BRASS
FINISH: SILVER

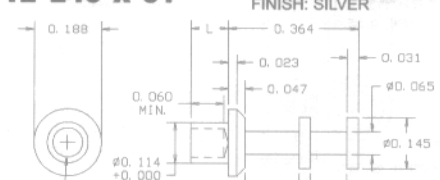


PART NO.	L	T	RECOMMENDED MOUNTING HOLE .116 DIA.(#32 DRILL)
13-217-1	.075	1/32	
13-217-2	.105	1/16	
13-217-3	.135	3/32	
13-217-4	.165	1/8	
13-217-5	.195	5/32	
13-217-6	.230	3/16	

TOOLS	
ANVIL	PUNCH
TA188-156-31	TP112-78

12-240-X-01

MATERIAL: BRASS
FINISH: SILVER

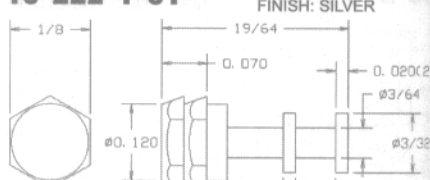


PART NO.	L	T	RECOMMENDED MOUNTING HOLE .128±.002 DIA. PRESS TO .085 MIN. DEPTH
12-240-1	.075	1/32	
12-240-2	.105	1/16	
12-240-3	.135	3/32	
12-240-4	.165	1/8	

TOOLS	
ANVIL	PUNCH
TA188-146-31	TP112-78

10-222-1-01

MATERIAL: BRASS
FINISH: SILVER



TOOLS	
ANVIL	PUNCH
TA188-146-31	TP112-78

FOR ADDITIONAL SIZES AND MATERIALS, CONTACT FACTORY

