

THIS DRAWING IS UNPUBLISHED. RELEASED FOR PUBLICATION
 © COPYRIGHT BY TYCO ELECTRONICS CORPORATION. ALL RIGHTS RESERVED.

LOC		DIST		REVISIONS			
A	66	#	LTR	DESCRIPTION	DATE	OWN	APVD
		B		ECR-08-020547	8-2008	MY	TE

PART NUMBER	REV	FIRST USED	POWER UNIT	FEED TYPE	DESCRIPTION
1852621-2	B	565435-5	BENCH MODEL K	PRE FEED	CUTS CARRIER
1852621-3	A	354500-1	BENCH MODEL G	PRE FEED	CUTS CARRIER
7-1852621-7	A	-	-	-	SPARE PARTS

TERMINAL NAME: -					
184437		CRIMPING DATA			
63535-1					
PAD LTR	CRIMP HEIGHT		WIRE SIZE		
A	.035 ±002		30 SOLID		
B	-		-		
C	-		-		
D	-		-		
CRIMP		SIZE	TYPE	RANGE	
WIRE		.042	F	30	
INSUL		-	-	-	
PRESS NO. -					
WIRE STRIP LENGTH	TERM APPL SPEC	FEED	APPL INSTRUCTION	SET UP GAGE	LAYOUT
-	-	.436	-	-	L1339

- 1 RECOMMENDED SPARE PARTS.
- 2 GREASE LIGHTLY.
- 3 LUBRICATE DAILY USING NO. 20 MACHINE OIL.
- 4 GUARD MUST BE IN PLACE WHEN OPERATING APPLICATOR IN BENCH MACHINE.
- 5 MODIFY LAMINATER SPACER AS REQUIRED TO REMOVE CLEARANCE IN FEED LINKAGE.
- 6. LUBRICATION OF TERMINAL IS REQUIRED.

					181	
					180	
					179	
					178	
					177	
					176	
					175	
					174	
-	1	1	-	1804299-1	SPACER, MAGNET	173
						172
-	2	2	-	18028-2	WASHER, FLAT, REG M4	171
-	1	1	-	3-21081-3	SCR, SKT CAP(1/4-20x1.25)	170
-	2	2	-	9-21000-9	SCR, SKT CAP(8-32x.44)	169
-	2	2	-	22593-1	NUT, HEX, JAM, SS 1/4-20	168
-	2	2	-	994991-5	SCR,OVL HD (M4x12)	167
-	1	1	-	1804310-1	MAGNET, RING	166
-	1	1	-	1804303-1	BRACKET, COUNTER MOUNTING	165
-	1	1	-	1804300-1	ASSY, APPLICATOR COUNTER	164
						163
						162
						161
-	2	2	-	1-21046-6	RING,RETAIN.EXT 5/16 E-RING	160
						159
						158
						157
						156
						155
						154
						153
						152
						151
						150
						149
						148
						147
						146
						145
						144
						143
						142
						141
-77	-3	-2	U/M	PART NO	DESCRIPTION	ITEM NO
PARTS LIST						

						140
						139
						138
						137
						136
						135
						134
						133
						132
						131
						130
						129
						128
						127
-	2	2	-	5-354779-6	PIN,WIRE DISC (.3170) A	126
						125
-	2	2	-	21045-3	RING,RET "C"(.187φ)FEED FINGER PIN	124
						123
						122
						121
-	1	1	-	1-21030-1	PIN,DOWEL(.187φx.50)LEVER	120
-	1	1	-	1-21030-6	PIN,DOWEL(.187φx1.25)HOUSING	119
						118
-	1	1	-	21024-5	WASHER,LOCK(NO.10)ADJ BLOCK	117
-	2	2	-	21024-5	WASHER,LOCK(#10)ADJ PL	116
-	2	2	-	21024-5	WASHER,LOCK(#10)FD GUIDE ROD	115
-	-	1	-	2-21002-6	SR, BTN SKT HD CAP(10-32x.38)	114
-	-	1	-	1-465184-0	LUBRICATOR ASSY	113
						112
-	4	4	-	21024-4	WASHER,LOCK(NO.8)STRIPPER	111
-	2	2	-	21055-5	WASHER,FLAT	110
						109
-	1	1	-	21018-5	NUT,HEX(6-32)	108
-	1	1	-	21068-5	NUT,HEX(6-32)FEED ADJ	107
						106
						105
						104
-	1	1	-	21009-2	SCR,SKT SET(1/4-20x.25LOC-WEL)RAM	103
-	2	2	-	21017-2	SCR,DRIVE(#2x.19)ID PLATE	102
-	1	1	-	3-21016-2	SCR,RD HD(6-32x1.50)FEED ADJ	101
-	1	1	-	461264-1	PLATE, IDENTIFICATION	100
						99
-	2	2	-	22733-8	SCR,BHC(8-32x.38LOC-WEL)ANVIL	98
-	4	4	-	2-21002-9	SCR,BHC(10-32x.75)CAP	97
-	3	3	-	2-222733-8	SCR,BHC(1/4-20x.62)HOUSING	96
-	1	1	-	2-21002-7	SCR,BHC(10-32x.50)SG ADJ BLOCK	95
-	2	2	-	1-21002-4	SCR,BHC(4-40x.38)SHEAR	94
-	2	2	-	2-21002-4	SCR,BHC(8-32x.75)R STRIP GUIDE	93
						92
-	1	1	-	1-21002-7	SCR,BHC(6-32x.38)CAM	91
						90
						89
						88
-	2	2	-	2-21000-7	SCR,SKT CAP(8-32x.50)HOLD DOWN	87
-	1	1	-	2-22603-0	SCR,HEX HEAD(8-32x.31)FEED FINGER	86
						85
-	1	1	-	2-21000-7	SCR,SKT CAP(8-32x.50)STRIPPER	84
-	2	2	-	3-21000-7	SCR,SKT CAP(10-32x.75)FEED ROD GD	83
-	2	2	-	3-21000-6	SCR,SKT CAP(10-32x.62)FEED ADJ BLK	82
-	1	1	-	3-21000-4	SCR,SKT CAP(10-32x.38)SG ADJ BL	81
-	1	1	-	3-21000-4	SCR,SKT CAP(10-32x.38)PILOT BLK	80
-	-	1	-	456747-1	GUARD, WINDOW	79
-	REF	-	-	679532-1	INSERT, GUARD	78
						77
						76
						75
						74
						73
-	1	1	-	458109-1	WASHER, SPECIAL	72
-	3	3	-	690517-1	SPACER	71
						70

-	1	1	-	22594-8	NUT, HEX	70
-	1	1	-	240628-1	PLATE, ADJUSTMENT	69
-	1	1	-	240626-1	SHAFT, PIVOT	68
-	1	1	-	240633-1	BUSHING	67
-	1	1	-	455680-1	LEVER, INTERMEDIATE	66
-	1	1	-	240629-1	BLOCK, PIVOT	65
-	1	1	-	1804311-1	SCREW, ADJUSTMENT FEED ROD	64
-	1	1	-	240659-3	PIN, CAM ROLLER	63
-	1	1	-	240658-1	ROLLER, CAM	62
-	1	1	-	454398-2	ROD, FEED	61
-	1	1	-	1804305-2	GUIDE, FEED ROD	60
-	1	1	-	454220-1	RAM, CAP	59
-	1	1	-	454485-3	HOUSING	58
						57
-	1	1	-	4-6944339-9	PAWL, FEED	56
-	1	1	-	240624-1	PIN, FEED FINGER	55
-	1	1	-	240638-1	SPRING, FEED FINGER	54
-	1	1	-	690541-1	FINGER, FEED	53
-	1	1	-	455679-1	LEVER, TERMINAL FEED ARM	52
-	1	1	-	811242-2	BUMPER, HOLDDOWN	51
-	1	1	-	690753-1	SPACER, TONKER	50
-	1	1	-	7-21002-9	BOLT, CRIMPER(5/16-24x1.00)	49
-	-	1	-	690602-5	CAM, PRE-FEED 1 1/8 STROKE	48
-	1	-	-	610602-6	CAM, PRE-FEED 1 5/8 STROKE	47
						46
-	1	1	-	690191-1	PLUG, NYLON	45
-	1	1	-	819307-1	RAM	44
-	1	1	-	690125-1	WASHER, LAMINATED	43
-	1	1	-	690124-1	WASHER, RAM	42
-	1	1	-	690223-2	DISC, SPACER	41
-	1	1	-	986950-1	WASHER, PRECISION	40
						39
						38
-	1	1	-	354777-1	DISC, WIRE , PLASTIC	37
-	1	1	-	22480-5	WASHER, SPRING	36
-	1	1	-	690212-1	POST, RAM	35
						34
-	1	1	-	464967-2	PLATE, BASE	33
						32
						31
-	1	1	-	455689-1	BLOCK, STRIP GUIDE ADJ	30
-	-	1	-	1633091-9	ASSY, STRIP GUIDE	29
-	1	1	-	1-455888-0	SPACER, FRONT SHEAR DEP	28
-	1	1	-	1320908-9	SPACER, STRIP GUIDE	27
						26
						25
-	1	1	-	1320928-1	PLATE, STRIP GUIDE	24
						23
						22
-	1	1	-	4-22284-9	SPRING, FEED RETURN	21
						20
-	1	1	-	679218-2	STRIPPER ASSEMBLY	19
						18
						17
						16
						15
						14
-	1	1	-	5-22279-2	SPRING, SHEAR	12
-	1	1	-	690461-2	STOP, SHEAR	11
1	1	1	-	686859-5	HOLDER, SHEAR (FRONT)	10
1	1	1	-	462006-8	SHEAR, FLOAT (FRONT)	9
1	1	1	-	852140-1	ANVIL	8
1	1	1	-	852141-1	ANVIL	7
						6
-	1	1	-	844577-1	DEPRESSOR, SHEAR (FRONT)	5
						4
						3
-	1	1	-	455888-9	SPACER, CRIMPER	2
1	1	1	-	2-458209-6	CRIMPER, WIRE	1

-77	-3	-2	U/M	PART NO	DESCRIPTION	ITEM NO
PARTS LIST						
QTY REQD PER ASSY						

THIS DRAWING IS A CONTROLLED DOCUMENT.

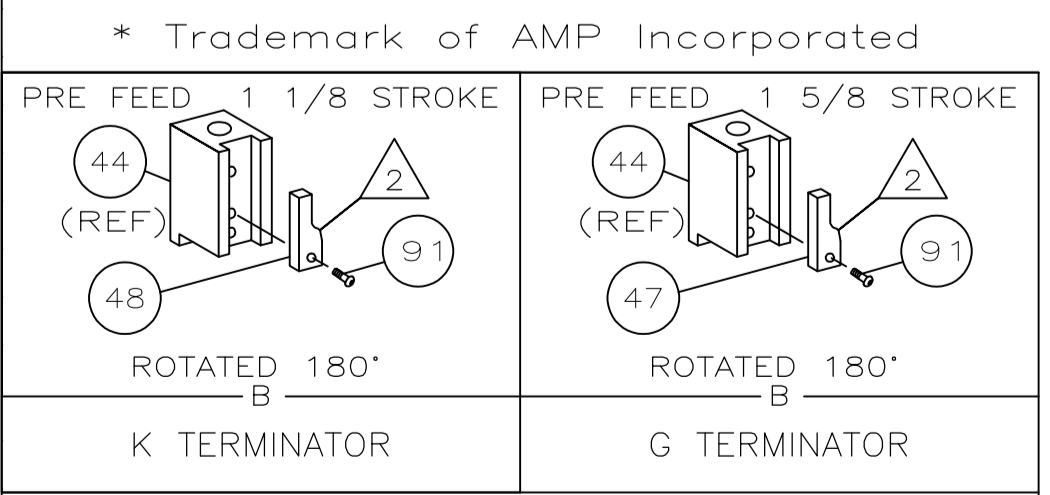
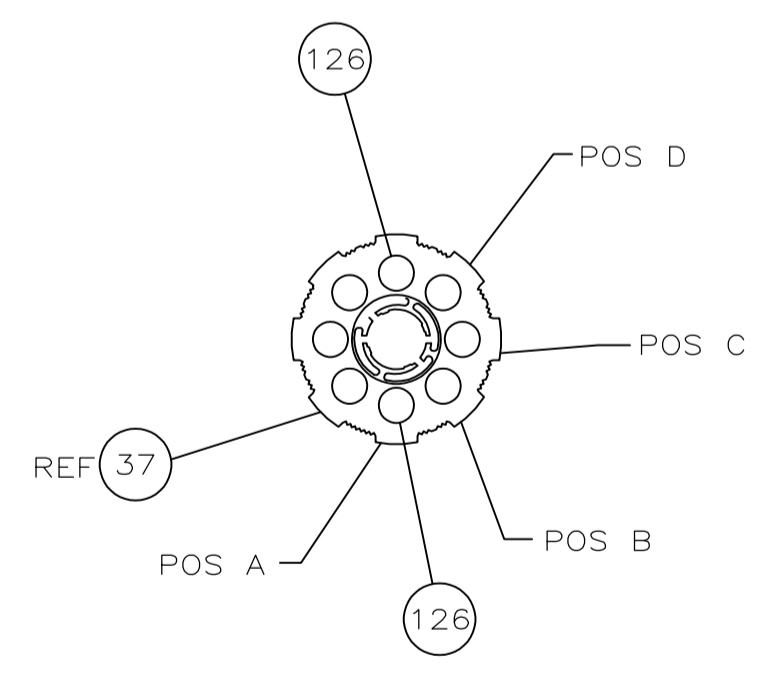
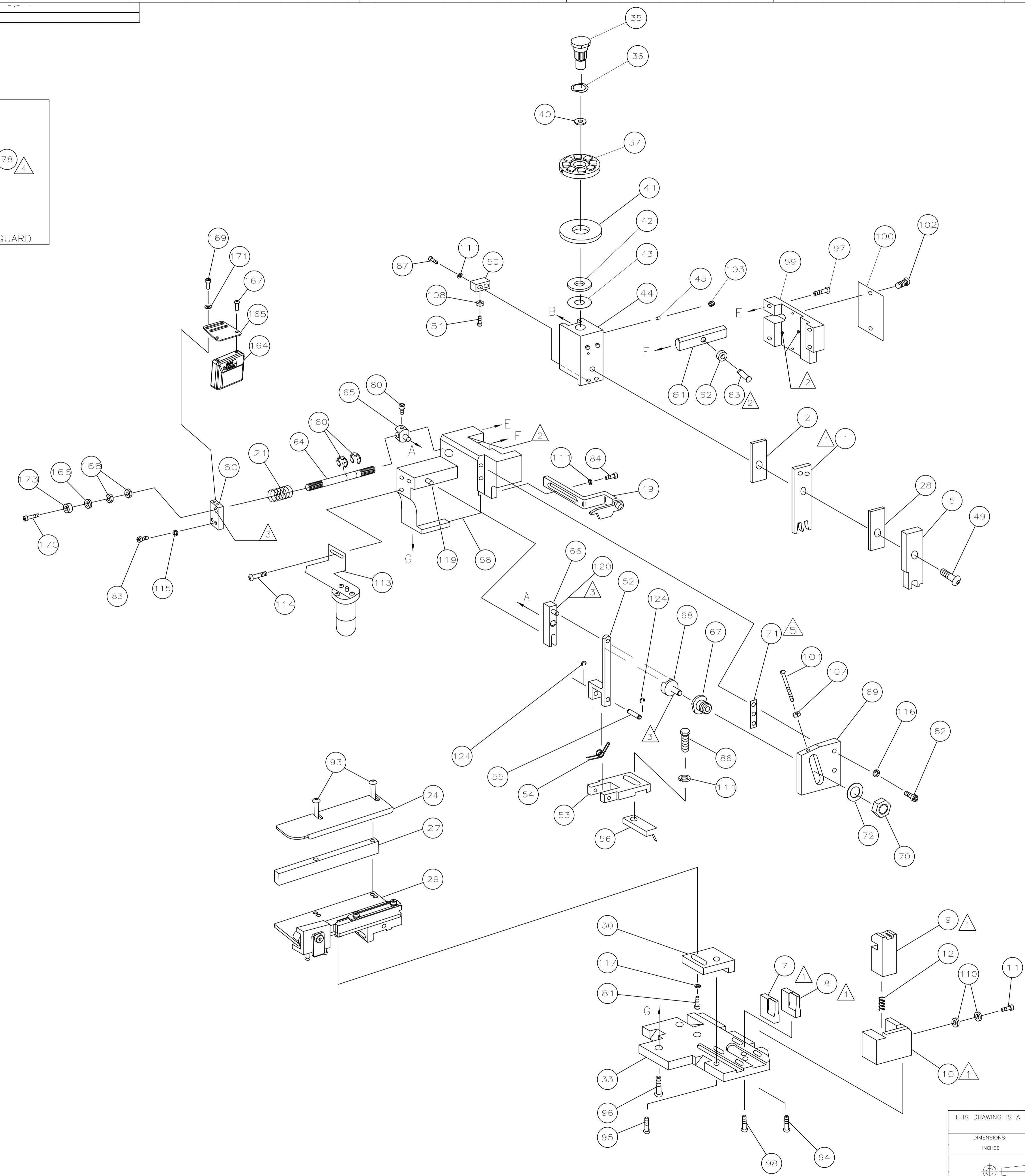
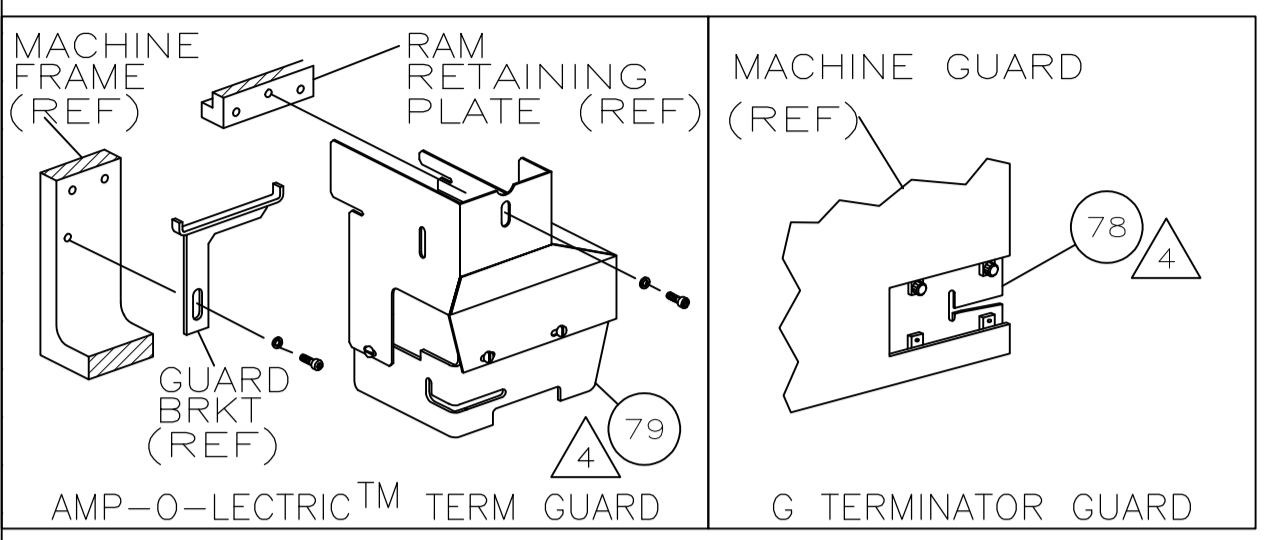
DMN: M.YOUNGER 04JAN2008
 CHK: -
 APVD: T.FELBIN
 NAME: -

Tyco Electronics Corporation
 Harrisburg, PA 17105-3608

PRODUCT SPEC: -
 APPLICATION SPEC: -

SIZE: A1 GAGE CODE: 00779 DRAWING NO: 1852621
 RESTRICTED TO: -

CUSTOMER DRAWING SCALE: - SHEET: 1 OF 2 REV: B



THIS DRAWING IS A CONTROLLED DOCUMENT.		DWG: M. YOUNGER 04JAN2008	Tyco Electronics Corporation Harrisburg, PA 17105-3608													
DIMENSIONS: INCHES		TOLERANCES UNLESS OTHERWISE SPECIFIED:	NAME: T. ELBIN													
<table border="1"> <tr><td>0. PLC</td><td>± .005</td></tr> <tr><td>1. PLC</td><td>± .005</td></tr> <tr><td>2. PLC</td><td>± .005</td></tr> <tr><td>3. PLC</td><td>± .005</td></tr> <tr><td>4. PLC</td><td>± .005</td></tr> <tr><td>ANGLES</td><td>± .005</td></tr> </table>		0. PLC	± .005	1. PLC	± .005	2. PLC	± .005	3. PLC	± .005	4. PLC	± .005	ANGLES	± .005	APVD: T. ELBIN	PRODUCT SPEC: -	
0. PLC	± .005															
1. PLC	± .005															
2. PLC	± .005															
3. PLC	± .005															
4. PLC	± .005															
ANGLES	± .005															
MATERIAL: -		FINISH: -	APPLICATION SPEC: -	RESTRICTED TO: -												
CUSTOMER DRAWING		SCALE: -	SIZE: A1	WEIGHT: -												
			CAGE CODE: 00779	DRAWING NO: 1852621												
			SHEET: 2	OF: 2												
			REV: B													

Mouser Electronics

Authorized Distributor

Click to View Pricing, Inventory, Delivery & Lifecycle Information:

[TE Connectivity:](#)

[1852621-2](#)