

THIS DRAWING IS UNPUBLISHED.		RELEASED FOR PUBLICATION		2007	
COPYRIGHT 2007 BY TYCO ELECTRONICS CORPORATION. ALL RIGHTS RESERVED.					
PART NUMBER	REV	FIRST USED	POWER UNIT	FEED TYPE	
1852646-1	E	122500-1	LEADMAKER & BENCH G	AIR FEED	
1852646-2	C	565435-5	BENCH MODEL K	AIR FEED	
7-1852646-7	C	-	-	-	

- 1 RECOMMENDED SPARE PARTS.
- 2 GREASE LIGHTLY.
- 3 LUBRICATE DAILY USING NO.20 MACHINE OIL.
- 4 AFTER ASSEMBLY OF APPLICATOR, PROPER SPRING PRESSURE (ITEM 34) CAN BE OBTAINED BY TIGHTENING SET SCREW (ITEM 105) UNTIL CONTACT IS MADE WITH SPACER (ITEM 32) THEN TIGHTEN AN ADDITIONAL 5 1/2-6 REVOLUTIONS.
- 5 TO BE SHIPPED WITH ASSEMBLY.
- 6 APPLY LOCTITE TO ITEM 93 AT ASSEMBLY.

TERMINAL NAME: RECEPTACLE, FLAG, FASTIN-FASTON, .250 SERIES					
-	1742626	TE TERMINAL - TE CRIMP SPECS			
-	-	PAD LTR	CRIMP HEIGHT	WIRE SIZE	-
-	-	A	.073.002 [1.85±0.05mm]	(2)14	-
-	-	B	.065±.002 [1.65±0.05mm]	(1)14 + (1)16	-
-	-	C	.057±.002 [1.45±0.05mm]	(2)16	-
-	-	D	-	-	-
-	-	CRIMP	SIZE	TYPE	RANGE
-	-	WIRE	.200 [5.08mm]	TAB LOC	(2)14
-	-	INSUL	.210 [5.33mm]	Ø	.110-.210
WIRE STRIP LENGTH	TERM APPL SPEC	FEED	APPL INSTRUCTIONS	SET UP GAGE	LAYOUT
.205-.235	114-2078	820	408-8037	458638-1	-

LOC	DIST	REVISIONS			
A	66	REV	DATE	BY	APPD
		E	240CT2014	JH	GB

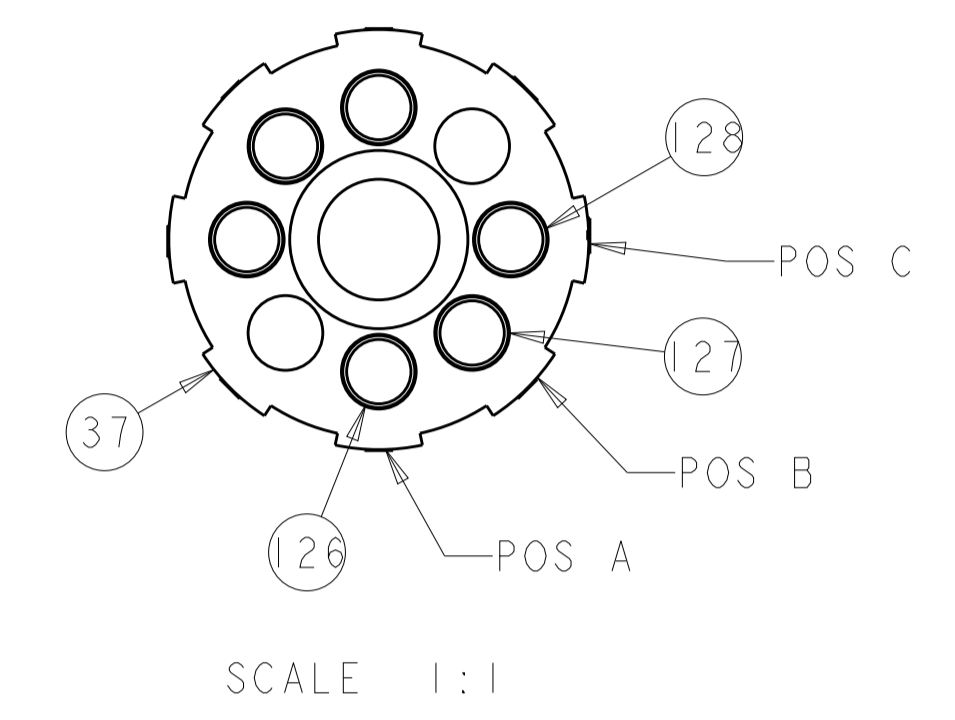
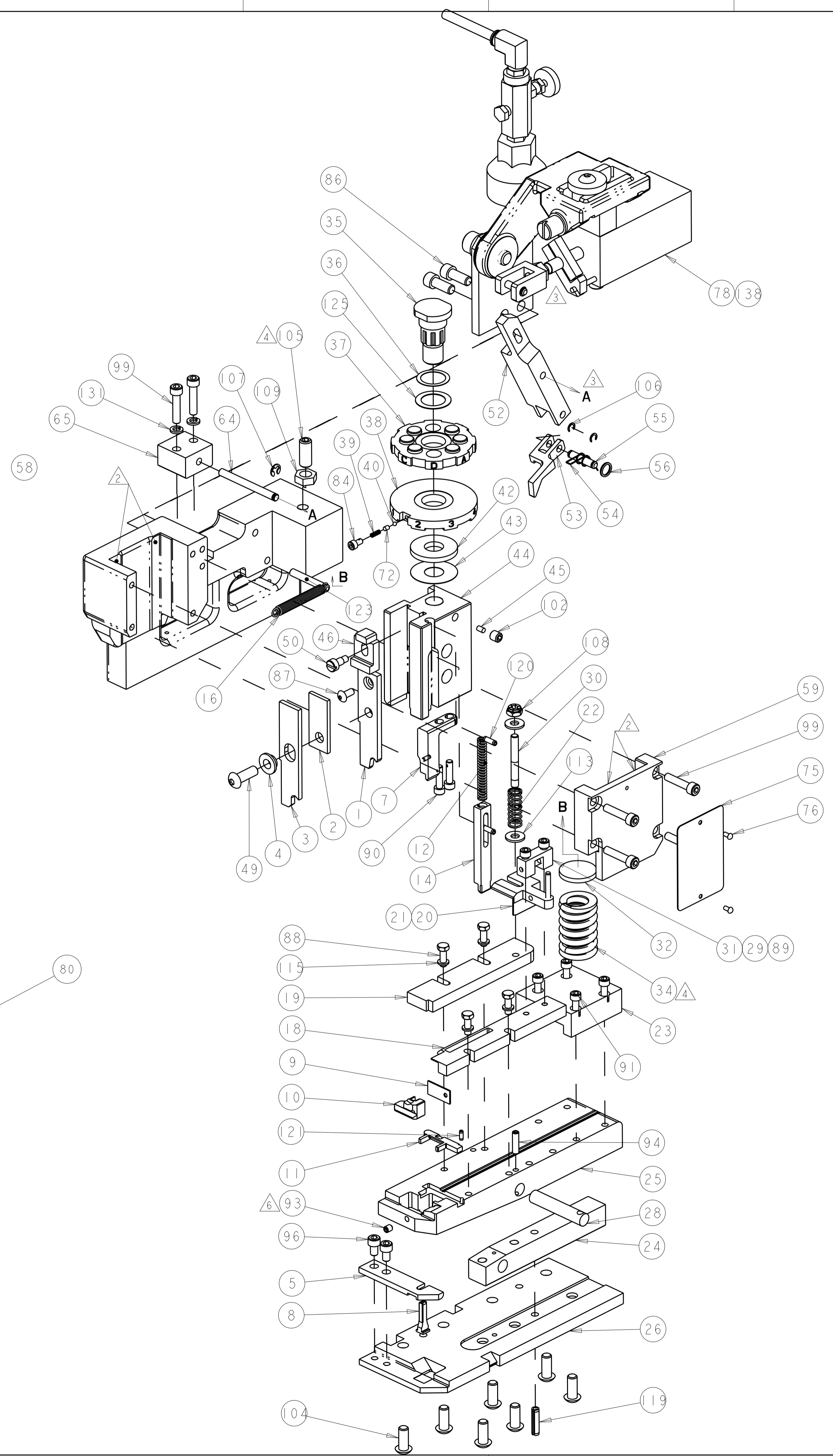
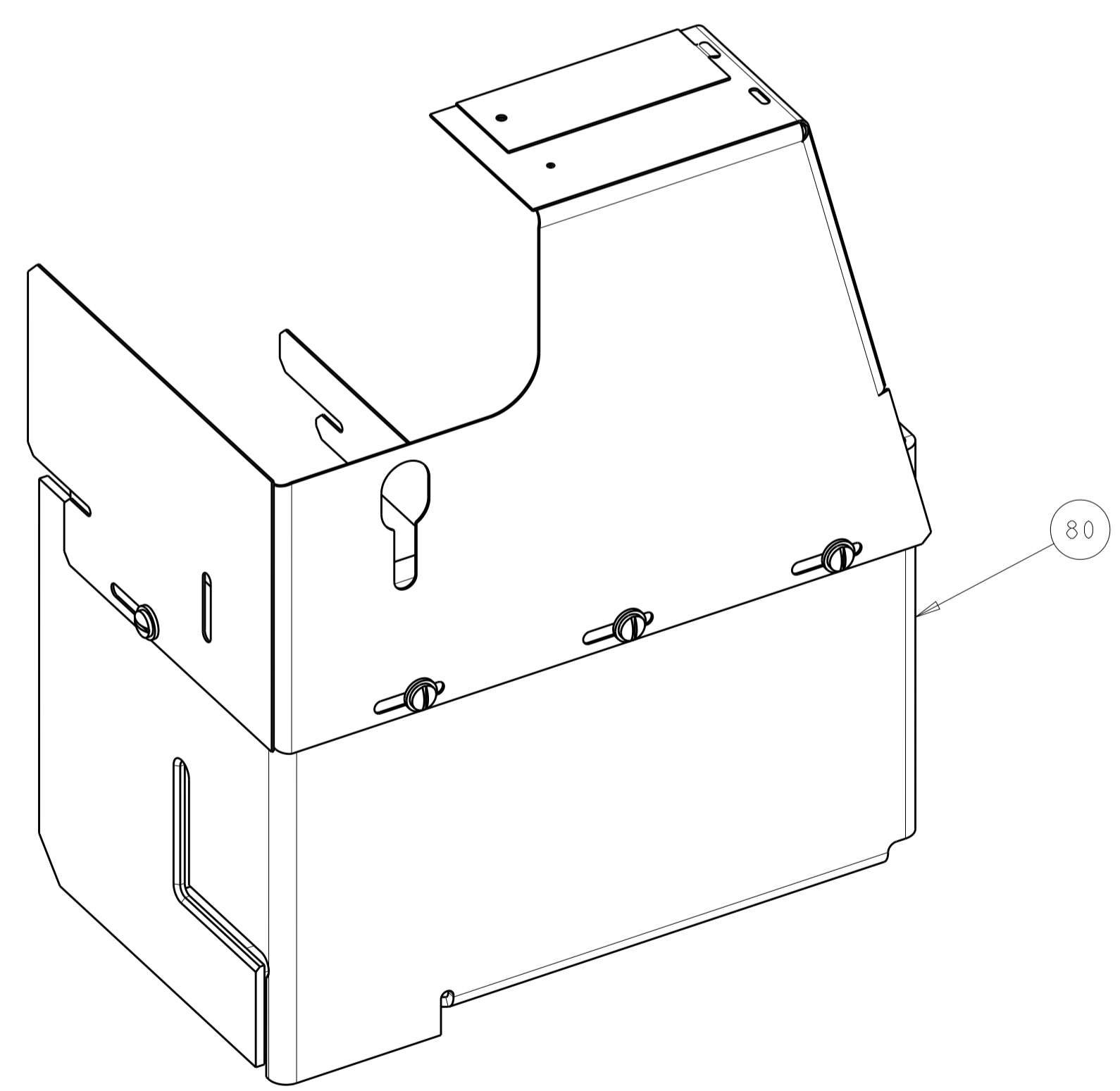
-	-	1	..	462622-2	AIR FEED ASSEMBLY	138
-	2	2	-	21024-5	WASHER, SPRG LOCK, REG NO 10	131
-	2	2	-	4-354779-3	PIN, WIRE DISC (.3205)	128
-	2	2	-	2-354779-6	PIN, WIRE DISC (.3120)	127
-	2	2	-	1-354779-1	PIN, WIRE DISC (.3045)	126
-	1	1	-	986950-1	WASHER, FLAT PRECISION	125
-	1	1	-	3-22183-9	PIN, GROOVED, TYPE 67	123
-	1	1	-	3-21028-2	PIN, SLOTTED SPRING .094 X .250	121
-	2	2	-	4-21028-9	PIN, SLOTTED SPRING .125 X .375	120
-	1	1	-	21029-5	PIN, SLOTTED SPRING .188 X .750	119
-	4	4	-	21024-4	WASHER, SPRG LOCK, REG NO 8	115
-	2	2	-	21899-2	WASHER, FLAT	113
-	1	1	-	1-22202-7	NUT, HEX, JAM 5/16-24/UNF	109
-	1	1	-	21022-3	NUT, HEX, SELF-LOCKING, THIN, 10-32	108
-	1	1	-	1-21986-2	RING, RETAIN, EXTERN, 3/16 E-RING	107
-	2	2	-	21045-3	RING, RETAIN, EXTERN, 3/16 CRESCENT	106
-	1	1	-	8-21007-5	SCR, SET, CUP POINT 5/16-24 X .750	105
-	7	7	-	2-22733-8	SCR, BHSC, SELF-LOCKING, 1/4-20 X .625	104
-	1	1	-	21009-2	SCR, SET, SELF LOCKING 1/4-20 X .250	102
-	6	6	-	3-21000-8	SCR, SKT HD CAP 10-32 X .875	99
-	2	2	-	7-21000-6	SCR, SKT HD CAP 10-32 X .312	96
-	1	1	-	4-21006-5	SCR, SET, CUP POINT 8-32 X .625	94
-	1	1	-	21061-9	SCR, SET, CONE POINT 8-32 X .250	93
-	4	4	-	2-21000-9	SCR, SKT HD CAP 8-32 X .750	91
-	2	2	-	1-23030-1	SCR, SKT HD CAP, S-LOCK, 8-32 X .625	90
-	2	2	-	2-21000-8	SCR, SKT HD CAP 8-32 X .625	89
-	4	4	-	2-22603-3	SCR, HEX HD CAP, 1N	88
-	1	1	-	2-21002-1	SCR, BTN SKT HD CAP 8-32 X .375	87
-	2	2	-	21001-3	SCR, SKT HD CAP 1/4-20 X .625	86

-	1	1	-	23030-1	SCR, SKT HD CAP, S-LOCK, 6-32 X .25	84
-	1	-	-	457244-2	GUARD ASSEMBLY	80
-	2	2	-	3-21000-4	SCR, SHC (10-32X.25)	79
-	1	-	-	457098-7	AIR FEED ASSEMBLY	78
-	1	-	-	694427-1	PLATE, APPLICATOR, MOUNTING	77
-	2	2	-	21017-2	SCREW, DRIVE	76
-	1	1	-	461264-1	PLATE, IDENTIFICATION	75
-	1	1	-	690603-1	SPRING ASSIST AMP-O-MATOR APPLICATOR	72
-	1	1	-	456987-1	BLOCK, PIVOT	65
-	1	1	-	457058-1	PIN, PIVOT	64
-	1	1	-	455164-1	CAP, RAM	59
-	1	1	-	457079-1	HOUSING, MACHINING	58
-	1	1	-	25745-1	RING, SPLIT	56
-	1	1	-	240624-1	PIN, FEED FINGER	55
-	1	1	-	691499-1	SPRING-FEED FINGER	54
-	1	1	-	454568-1	FINGER, FEED	53
-	1	1	-	457057-2	PIVOT ARM	52
-	1	1	-	22353-8	SCR, SHLD, SLOT HD, 3/16 DIA	50
-	1	1	-	3-21002-5	SCR, BTN SKT HD CAP 1/4-20 X .750	49
-	1	1	-	690578-1	INSULATION ADJUST BLOCK	46
-	1	1	-	690191-1	PLUG, NYLON	45
-	1	1	-	454574-1	RAM, SPECIAL	44
-	1	1	-	690125-1	SHIM SUB-ASSY	43
-	1	1	-	690124-4	WASHER, RAM (.135)	42
-	1	1	-	23241-6	BALL, STEEL	40
-	1	1	-	690170-1	SPRING, COMPRESSION	39
-	1	1	-	690142-2	DISC, INSULATION	38
-	1	1	-	354777-1	WIRE DISC, ASSEMBLY	37
-	1	1	-	22480-5	WASHER, WAVE SPRING	36
-	1	1	-	690212-1	POST, RAM	35
-	1	1	-	3-23846-5	SPRING, DIE	34
-	1	1	-	690573-1	SPACER, SPRING	32
-	1	1	-	454569-1	MOUNT, DRAG	31
-	1	1	-	1-22354-8	STUD, THREADED	30
-	1	1	-	21030-2	PIN, DOWEL .1250 X .500	29
-	1	1	-	1633530-1	PIN, HINGE	28
-	1	1	-	684905-1	PLATE, BASE	26
-	1	1	-	454579-7	BAR, HINGE	25
-	1	1	-	690571-1	STABILIZER	24
-	1	1	-	690585-3	BLOCK, SPRING PRESSURE	23
-	1	1	-	8-22282-6	SPRING, COMPRESSION	22
-	1	1	-	21030-6	PIN, DOWEL .1250 X 1.000	21
-	1	1	-	454570-2	DRAG, STOCK	20
-	1	1	-	454573-2	GUIDE, STRIP, REAR	19
-	1	1	-	454571-6	GUIDE, FRONT STRIP	18
-	1	1	-	2-22287-6	SPRING, EXTENSION	16
-	1	1	-	1-692134-6	TERMINAL POSITIONER	14
-	1	1	-	5-22280-5	SPRING, COMPRESSION	12
-	1	1	-	454711-6	PLATE, REAR SHEAR	11
-	1	1	-	1633080-3	ANVIL, INSERT	10
-	1	1	-	1-690569-2	PLATE, SHEAR, FRONT	9
-	1	1	-	1633789-1	ANVIL, REVERSIBLE	8
-	1	1	-	854422-4	BLADE, SHEAR	7
-	1	1	-	684906-1	ANVIL RETAINING	5
-	1	1	-	690574-1	SPACER, TUBULAR	4
-	1	1	-	1633086-1	CRIMPER, INSULATION PREMIUM	3
-	1	1	-	681153-2	SPACER, CRIMPER	2
-	1	1	-	690763-3	CRIMPER, WIRE	1

- 1
- 2
- 3
- 4
- 5
- 6
- 7
- 8
- 9
- 10
- 11
- 12
- 13
- 14
- 15
- 16
- 17
- 18
- 19
- 20
- 21
- 22
- 23
- 24
- 25
- 26
- 27
- 28
- 29
- 30
- 31
- 32
- 33
- 34
- 35
- 36
- 37
- 38
- 39
- 40
- 41
- 42
- 43
- 44
- 45
- 46
- 47
- 48
- 49
- 50
- 51
- 52
- 53
- 54
- 55
- 56
- 57
- 58
- 59
- 60
- 61
- 62
- 63
- 64
- 65
- 66
- 67
- 68
- 69
- 70
- 71
- 72
- 73
- 74
- 75
- 76
- 77
- 78
- 79
- 80
- 81
- 82
- 83
- 84
- 85
- 86
- 87
- 88
- 89
- 90
- 91
- 92
- 93
- 94
- 95
- 96
- 97
- 98
- 99
- 100

DIMENSIONS:		TOLERANCES UNLESS OTHERWISE SPECIFIED:	
IN	0 PLC ±	1 PLC ±	2 PLC ±
	3 PLC ±	4 PLC ±	ANGLES ±
MATERIAL	FINISH	WEIGHT	RESTRICTED TO
		A100779	SCALE 1:1 SHEET 1 OF 2 REV E
CUSTOMER DRAWING		CUSTOMER ACCESSIBLE PRODUCTION DRAWING	

LOC		DIST		REVISIONS			
A	66	P	LTM	DESCRIPTION	DATE	DWN	APVD
		-	-	SEE SHEET 1	-	-	-



<small>THIS DRAWING IS UNPUBLISHED. IT IS THE PROPERTY OF TYCO ELECTRONICS CORPORATION. IT IS SUBJECT TO CHANGE AND WITHOUT WARRANTY. REVISIONS SHOULD BE CONTACTED FOR THE LATEST REVISION.</small>		DWN R.O.WILSON 18FEB2008 CHK R.O.WILSON 20FEB2008 APVD T.ELRLN 21FEB2008	<b>STE</b> TE Connectivity Harrisburg, PA 17105-3608
DIMENSIONS: IN 		TOLERANCES UNLESS OTHERWISE SPECIFIED: 0 PLC ± 1 PLC ± 2 PLC ± 3 PLC ± 4 PLC ± ANGLES ± FINISH	NAME END FEED HINGE BAR APPLICATOR PRODUCT SPEC - APPLICATION SPEC - SIZE CAGE CODE DRAWING NO. RESTRICTED TO A 100779 C=1852646 -
MATERIAL - FINISH -		WEIGHT - CUSTOMER DRAWING	SCALE 3:5 SHEET 2 OF 2 REV E CUSTOMER ACCESSIBLE PRODUCTION DRAWING