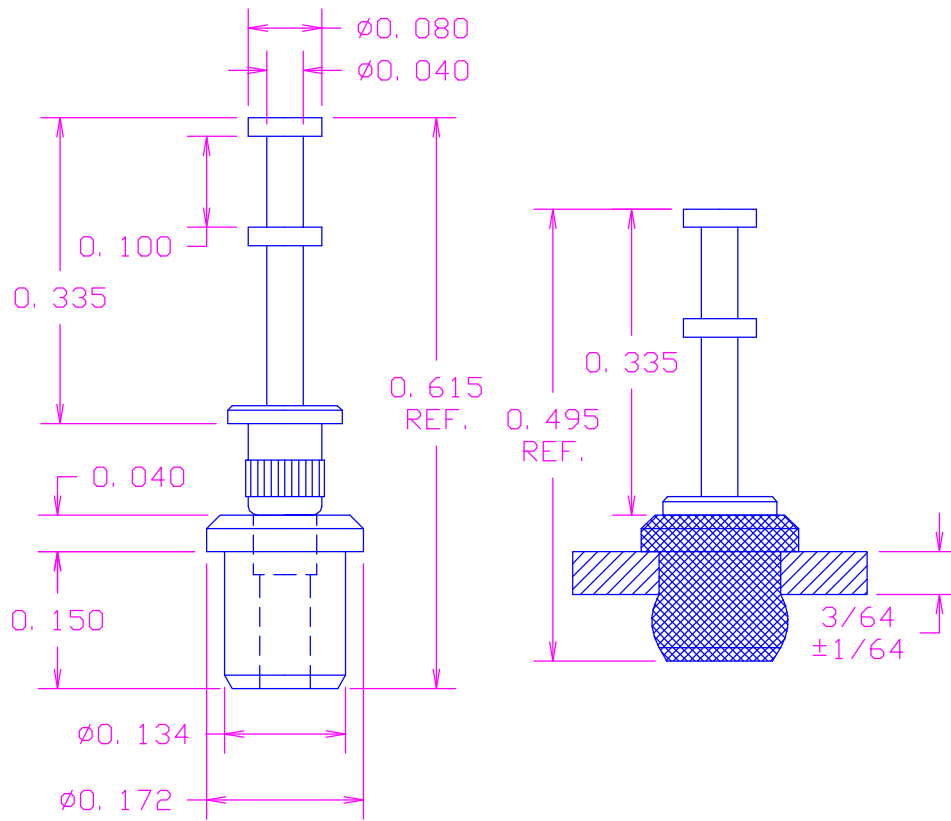


DATE	SYM	REVISION RECORD	AUTH.	DR.	CK.
10/27/00	-	ISSUED		NT	DG
5/8/02	1	PREASSEMBLED OVERALL LENGTH REF. ONLY		NT	DG



BEFORE INSTALLATION

AFTER INSTALLATION

(XX)COLOR CODE:
 10-BLACK
 11-BROWN
 12-RED
 13-ORANGE
 14-YELLOW
 15-GREEN
 16-BLUE
 17-VIOLET
 18-GRAY
 19-WHITE(NATURAL)

CHASSIS NOLE: .136±.002

MATERIAL: PIN- BRASS PER ASTM B16,
 ALLOY C36000, 1/2 HARD

BUSHING- PTFE PER ASTM D1710
 COLOR(XX)- SEE COLOR CODE

FINISH: PIN- .0003"MIN. ELECTRO-SOLDER PER
 MIL-P-81728, OVER .0001"MIN. COPPER

NOTE: PIN AND BUSHING SUPPLIED PARTIALLY ASSEMBLED

ACTUAL SIZE



TOLERANCES (EXCEPT AS NOTED)	CONCORD		ELECTRONICS CORPORATION
DECIMAL ± .005	P/N	SCALE	30 GREAT JONES ST. NEW YORK N. Y. 10012
FRACTIONAL ± 1/64	TITLE PRESS-LOCK TERMINAL		
ANGULAR ± 5°	DATE 10/27/00	DRAWING NUMBER 1177-13-05XX	