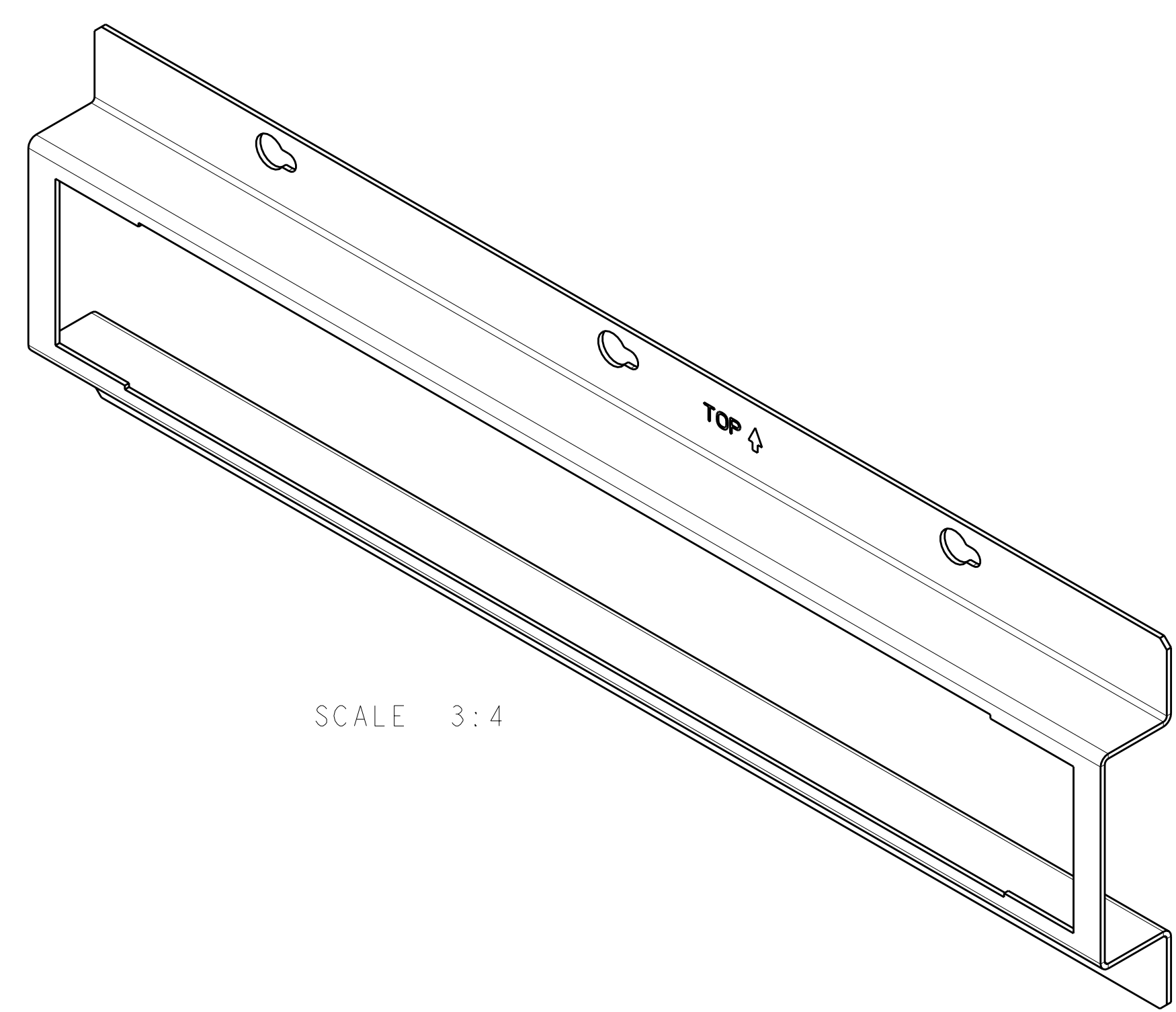
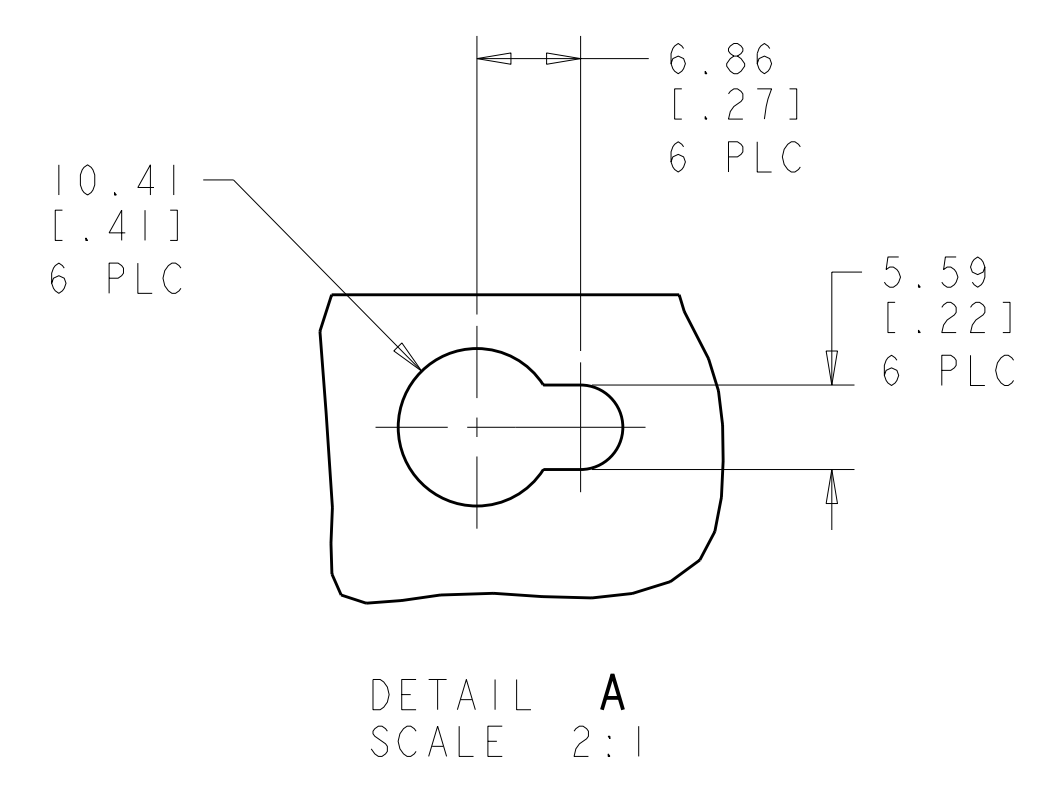
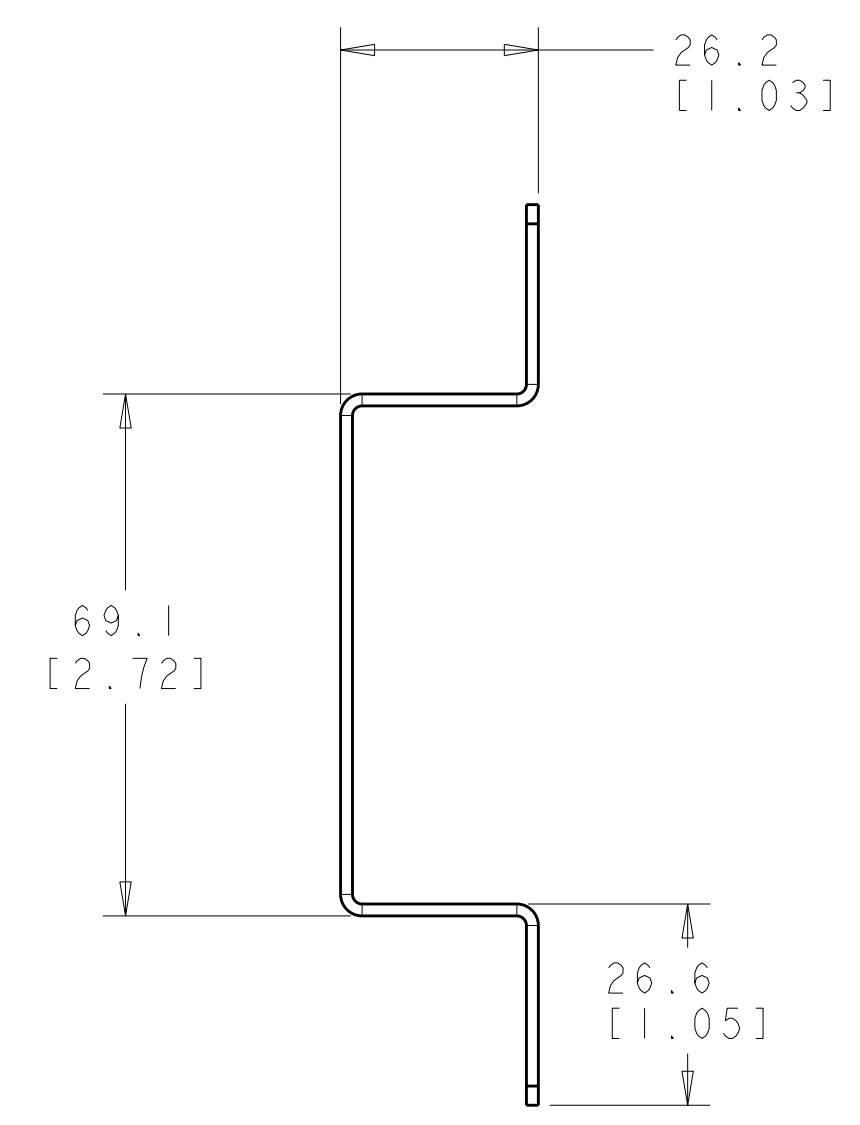
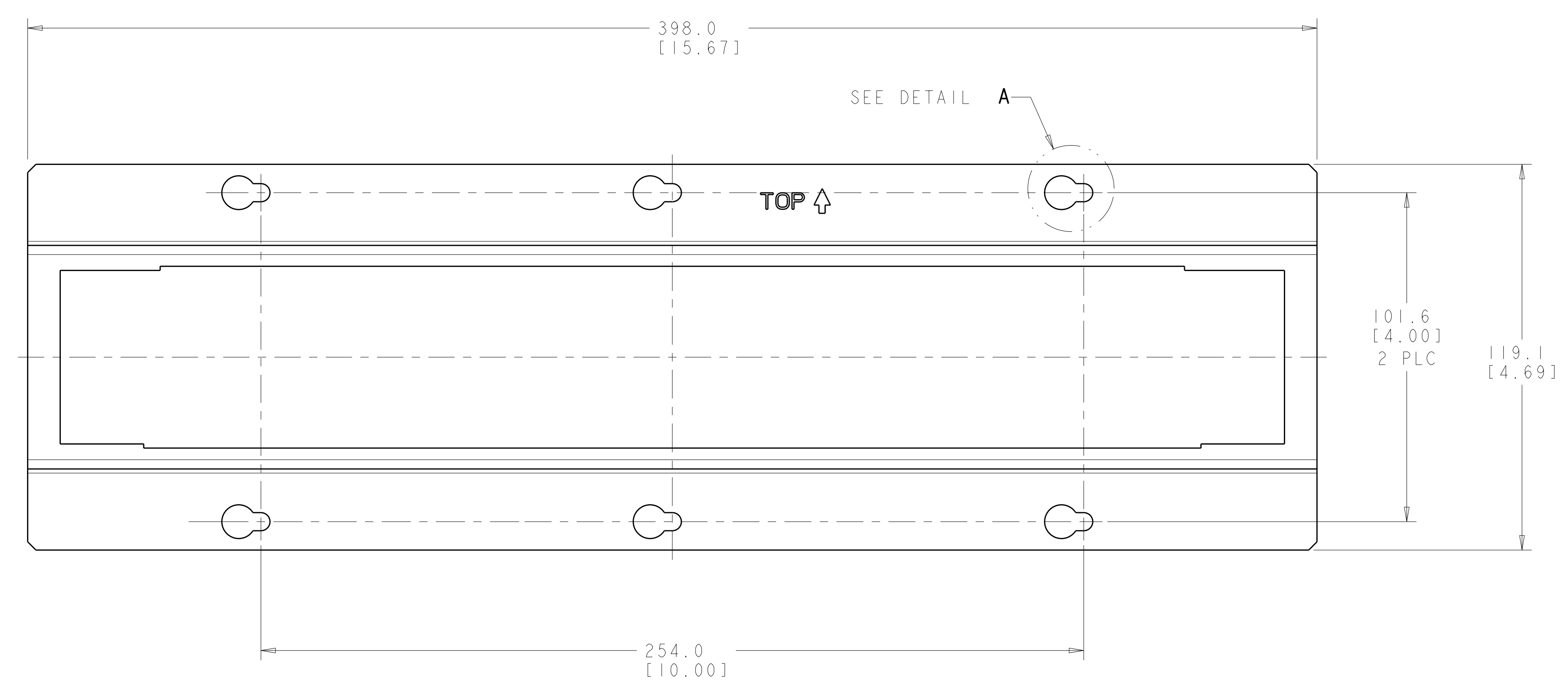


LOC		DIST		REVISIONS			
PLT	REV	DESCRIPTION	DATE	OWN	APPD		
HM	00	A	ECO-09-005570	10MAR2009	JB	SJ	



1. DIMENSIONS ARE NOMINAL UNLESS OTHERWISE SPECIFIED.
2. MATERIAL: ZINC-COATED CARBON STEEL.
3. APPLICATION: USE WITH AMPINERGY SNAP-IN STYLE TRIPLEX JUNCTION BOX TO PROVIDE SURFACE MOUNTING FOR UP TO 3 DUPLEX RECEPTACLES. USE THE KEYHOLE PATTERN FOR MOUNTING. NOTE: JUNCTION BOX, DUPLEX RECEPTACLE, AND FASTENERS NOT INCLUDED WITH BRACKET.
4. RECOMMENDED SCREW SIZE: #10



1933939-1  
PART NO.

DIMENSIONS: mm [INCHES]		TOLERANCES UNLESS OTHERWISE SPECIFIED: 9 PLC ± 1 PLC ± 2 PLC ± 3 PLC ± 4 PLC ± ANGLES ±		DWN J BURWELL 10MAR2009 CHK S JONES 10MAR2009 APPD S JONES 10MAR2009		Tyco Electronics Harrisburg, PA 17105-3608	
MATERIAL: ZINC-COATED CARBON STEEL		FINISH: -		PRODUCT SPEC: - APPLICATION SPEC: - WEIGHT: -		NAME: BRACKET, TRIPLEX, KEYHOLE MOUNT, SNAP-IN SIZE: A   CAGE CODE: 100779   DRAWING NO: C-1933939 RESTRICTED TO: -	
CUSTOMER DRAWING				SCALE: 1:1		SHEET 1 OF 1 REV A	