

4

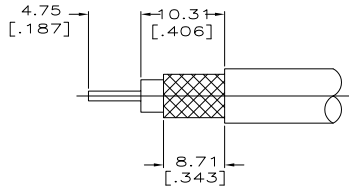
3

2

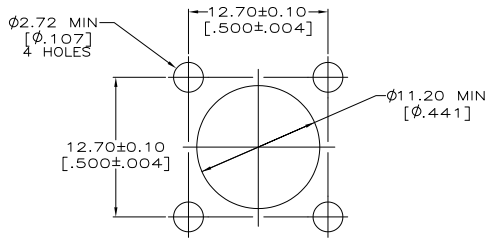
1

THIS DRAWING IS UNPUBLISHED. RELEASED FOR PUBLICATION
 © COPYRIGHT - By - ALL RIGHTS RESERVED.

LOC		DIBT		REVISIONS			
P	LR	DESCRIPTION	DATE	BY	APPD		
G		REV PER ECO-111-006359	12APR11	PY	BM		

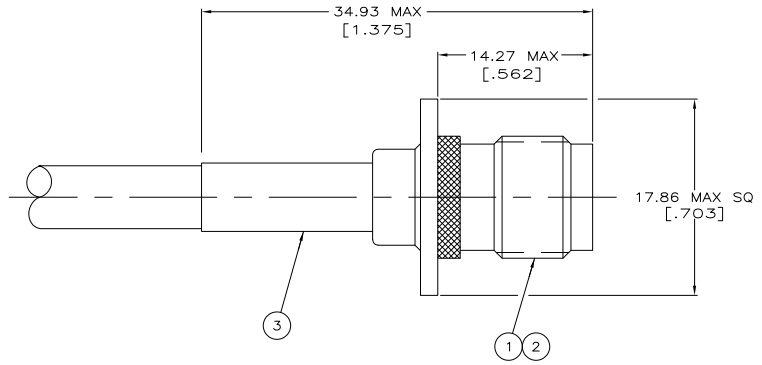


RECOMMENDED STRIP LENGTH



RECOMMENDED PANEL CUTOUT

⚠ FOR USE WITH FILECA F1703/94 AND FILOTEX 50 MFCFB CABLE
 2. SEE I.S. 408-2299-4



-	⚠	220015-6	331256	225471-7	225613-3	1-225348-2
00779 M39012/29B0005 YY WW	RG-58A/U & RG-58C/U	220045-2	225381-2	225471-9	225474-1	225348-2
STAMPING	CABLE SIZE	CRIMP TOOL	③ FERRULE QTY=1	② CONTACT QTY=1	① JACK ASSEMBLY QTY=1	PART NUMBER

THIS DRAWING IS A CONTROLLED DOCUMENT.		DM	3-13-91	TE Connectivity
DIMENSIONS: INCHES		SK SCOTT	3-21-91	
MATERIAL		J. LIPPERT		JACK, PANEL, SERIES INC
FINISH		APPC		
PRODUCT SPEC		NAME		RESTRICTED TO
APPLICATION SPEC		108-12001		
WEIGHT		SIZE	CAGE CODE	DRAWING NO
		A2	00779	
CUSTOMER DRAWING		SCALE	4:1	SHEET
				1 of 1
				REV
				G