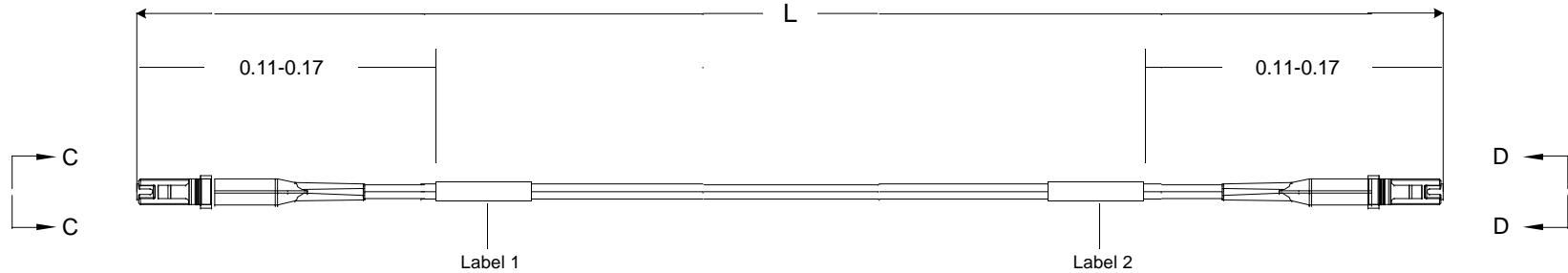


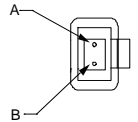
Restricted to: General Release

USED ON



Left Side

Connector(s): MT-RJ (No Pins)
 Mode: MM
 Housing Color: Black
 Geom. Spec: 115-1215



Fiber Path

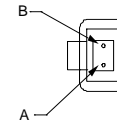
Fiber A - - Fiber B
 Fiber B - - Fiber A

Notes:

- 1 Product and Processing must meet requirements of Tyco Electronics Standard 230-702
- 2 Label 2 will not be present on any cable assembly less than 5 meters long.
- 3 Includes dust caps (not shown on print).
- 4 IL tested at 1300nm.

Right Side

Connector(s): MT-RJ SECURE (No Pins)
 Mode: MM
 Housing Color: Violet
 Geom. Spec: 115-1215



THIS INFORMATION IS CONFIDENTIAL AND PROPRIETARY TO TYCO ELECTRONICS, INC. IT IS TO BE USED ONLY FOR THE PURPOSES SPECIFIED IN THIS DRAWING. IT MAY NOT BE DISCLOSED TO ANY OTHER PERSON OR ENTITY WITHOUT THE WRITTEN AUTHORIZATION OF TYCO ELECTRONICS CORPORATION, HARRISBURG, PENNSYLVANIA.

LOC
 CE
 DIST
 16

A	Rev Per EC#	RELEASE	9/27/2006	-	MK		
P	LTR	REVISION RECORD	DATE	DIN	APVD		

DIMENSIONS:	TOLERANCES UNLESS OTHERWISE SPECIFIED:
meters	0 PLC ± .
	1 PLC ± .
	2 PLC ± .
	3 PLC ± .
	4 PLC ± .

DIN	Cable Assy Configurator	MATERIAL	HEAT TREAT
CHK	Michael Kepko		
APVD	Michael Kepko	AMP Tyco Electronics, Inc. Harrisburg, PA 17105-3608	
NAME	FO C/A - 2 fiber, 50/125, OFNR (Riser) jacket, MT-RJ (No Pins) to MT-RJ SECURE (No Pins)		
SCALE	SIZE	DRAWING NO	SHEET
NTS	A2	C- 1828266	1 of 3
			REV A

Customer Print

Restricted to: General Release

USED ON

THIS DRAWING IS A CONTROLLED DOCUMENT.

Part #	L (meters)	L (feet)	MT-RJ (No Pins), Black		MT-RJ SECURE (No Pins), Violet	
			IL (dB)	RL (dB)	IL (dB)	RL (dB)
0-1828266-1	0.950 - 1.050	3.11 - 3.44	0.5	20	0.5	20
0-1828266-2	1.950 - 2.050	6.39 - 6.72	0.5	20	0.5	20
0-1828266-3	2.950 - 3.050	9.67 - 10.00	0.5	20	0.5	20
0-1828266-4	3.920 - 4.080	12.86 - 13.38	0.51	20	0.51	20
0-1828266-5	4.920 - 5.080	16.14 - 16.66	0.51	20	0.51	20
0-1828266-6	5.920 - 6.080	19.42 - 19.94	0.51	20	0.51	20
0-1828266-7	6.920 - 7.080	22.70 - 23.22	0.51	20	0.51	20
0-1828266-8	7.920 - 8.080	25.98 - 26.50	0.51	20	0.51	20
0-1828266-9	8.850 - 9.150	29.03 - 30.01	0.51	20	0.51	20
1-1828266-0	9.850 - 10.150	32.31 - 33.30	0.52	20	0.52	20
1-1828266-1	10.850 - 11.150	35.59 - 36.58	0.52	20	0.52	20
1-1828266-2	11.850 - 12.150	38.87 - 39.86	0.52	20	0.52	20
1-1828266-3	12.850 - 13.150	42.15 - 43.14	0.52	20	0.52	20
1-1828266-4	13.850 - 14.150	45.43 - 46.42	0.52	20	0.52	20
1-1828266-5	14.850 - 15.150	48.72 - 49.70	0.52	20	0.52	20
1-1828266-6	15.840 - 16.160	51.96 - 53.01	0.52	20	0.52	20
1-1828266-7	16.830 - 17.170	55.21 - 56.33	0.53	20	0.53	20
1-1828266-8	17.820 - 18.180	58.46 - 59.64	0.53	20	0.53	20
1-1828266-9	18.810 - 19.190	61.71 - 62.95	0.53	20	0.53	20
2-1828266-0	19.800 - 20.200	64.96 - 66.27	0.53	20	0.53	20
2-1828266-1	20.790 - 21.210	68.20 - 69.58	0.53	20	0.53	20
2-1828266-2	21.780 - 22.220	71.45 - 72.90	0.53	20	0.53	20
2-1828266-3	22.770 - 23.230	74.70 - 76.21	0.53	20	0.53	20
2-1828266-4	23.760 - 24.240	77.95 - 79.52	0.54	20	0.54	20
2-1828266-5	24.750 - 25.250	81.20 - 82.84	0.54	20	0.54	20
2-1828266-6	25.740 - 26.260	84.44 - 86.15	0.54	20	0.54	20
2-1828266-7	26.730 - 27.270	87.69 - 89.46	0.54	20	0.54	20
2-1828266-8	27.720 - 28.280	90.94 - 92.78	0.54	20	0.54	20
2-1828266-9	28.710 - 29.290	94.19 - 96.09	0.54	20	0.54	20
3-1828266-0	29.700 - 30.300	97.44 - 99.40	0.55	20	0.55	20
3-1828266-1	30.690 - 31.310	100.68 - 102.72	0.55	20	0.55	20
3-1828266-2	31.680 - 32.320	103.93 - 106.03	0.55	20	0.55	20
3-1828266-3	32.670 - 33.330	107.18 - 109.35	0.55	20	0.55	20
3-1828266-4	33.660 - 34.340	110.43 - 112.66	0.55	20	0.55	20
3-1828266-5	34.650 - 35.350	113.68 - 115.97	0.55	20	0.55	20
3-1828266-6	35.640 - 36.360	116.92 - 119.29	0.55	20	0.55	20
3-1828266-7	36.630 - 37.370	120.17 - 122.60	0.56	20	0.56	20
3-1828266-8	37.620 - 38.380	123.42 - 125.91	0.56	20	0.56	20
3-1828266-9	38.610 - 39.390	126.67 - 129.23	0.56	20	0.56	20
4-1828266-0	39.600 - 40.400	129.92 - 132.54	0.56	20	0.56	20
5-1828266-0	49.500 - 50.500	162.40 - 165.68	0.58	20	0.58	20

Qty	U of M	Description	Item No.
1	piece	HOUSING, CONN, MT-RJ.BLACK	1
2	piece	DUST COVER, MT-RJ	2
2	piece	SPRING, MT-RJ, 3.8 DESIGN	3
2	piece	PIN KEEPER, 3.8MM	4
2	piece	MT-RJ, SPRING PUSH, UNIVERSAL	5
2	piece	CRIMP EYELET, MT-RJ	6
1	piece	MT-RJ Keyed Connector Housing - Violet	7
2	piece	MT-RJ FERRULE, THERMOPLAST,MM	8
AR	meter	2 fiber, 50/125, 1.8 mm, Twinzip, Orange, OFNR (Riser)	9
2	piece	MT-RJ TwinZip Bend Limiting Boot, Beige	10
2	piece	Trace Label	11

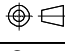
THIS INFORMATION IS CONFIDENTIAL AND PROPRIETARY TO TYCO ELECTRONICS, INC. IT IS TO BE KEPT CONFIDENTIAL AND NOT DISCLOSED TO ANY OTHERS WITHOUT THE WRITTEN AUTHORIZATION OF TYCO ELECTRONICS CORPORATION, HARRISBURG, PENNSYLVANIA.

LOC
CE
DIST
16

Rev Per	EC#	RELEASE	9/27/2006	-	MK
P	LTR	REVISION RECORD	DATE	DN	APVD

Customer Print

Customer Print

DIMENSIONS: meters 	TOLERANCES UNLESS OTHERWISE SPECIFIED: 9 PLC ± . 1 PLC ± . 2 PLC ± . 3 PLC ± . 4 PLC ± .	Cable Assy Configurator Michael Kepko Michael Kepko FO C/A - 2 fiber, 50/125, OFNR (Riser) jacket, MT-RJ (No Pins) to MT-RJ SECURE (No Pins)	MATERIAL - HEAT TREAT - AMP Tyco Electronics, Inc. Harrisburg, PA 17105-3608
SCALE NTS	SIZE A2	DRAWING NO C- 1828266	SHEET 2 of 3

8 7 6 5 4 3 2 1

Mouser Electronics

Authorized Distributor

Click to View Pricing, Inventory, Delivery & Lifecycle Information:

[TE Connectivity Divested:](#)

[2-1906099-8](#)