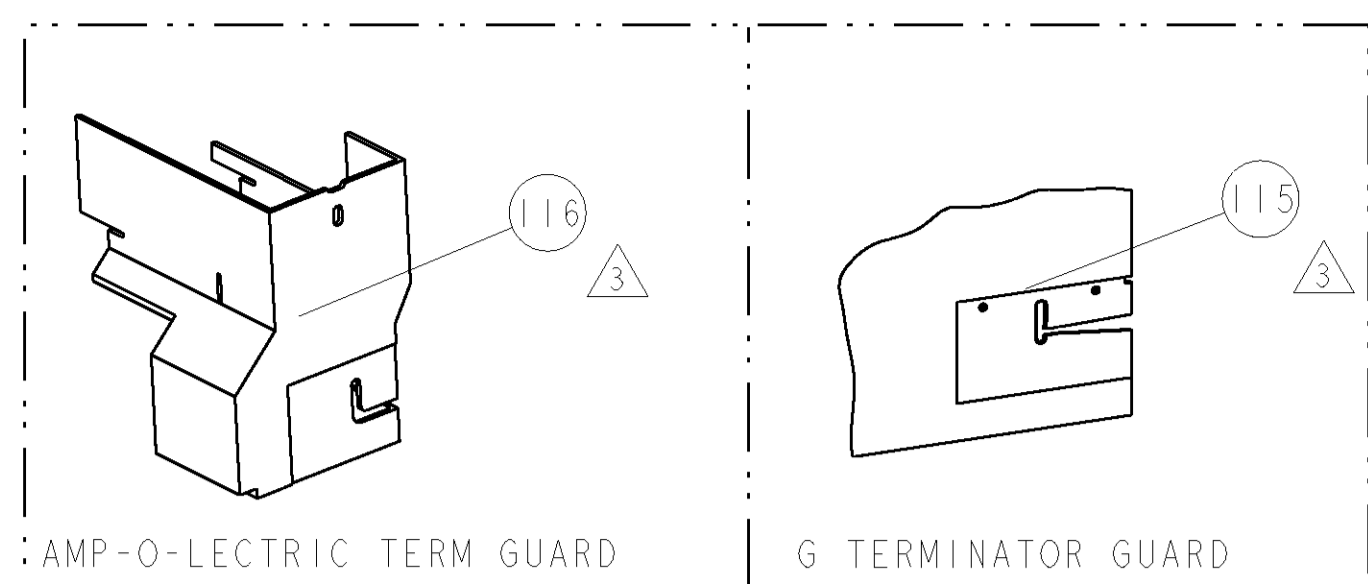


PART NUMBER	REV	FIRST USED	POWER UNIT	FEED TYPE	DESCRIPTION
1855275-1	A	122500-1	LEADMAKER	POST FEED	CUTS CARRIER
1855275-2	A	565435-5	BENCH MODEL K	PRE FEED	CUTS CARRIER
1855275-3	A	354500-1	BENCH MODEL G	PRE FEED	CUTS CARRIER
1855275-6	A	122500-1	LEADMAKER	POST FEED	CONTINUOUS CARRIER
7-1855275-7	A	-	-	-	SPARE PARTS

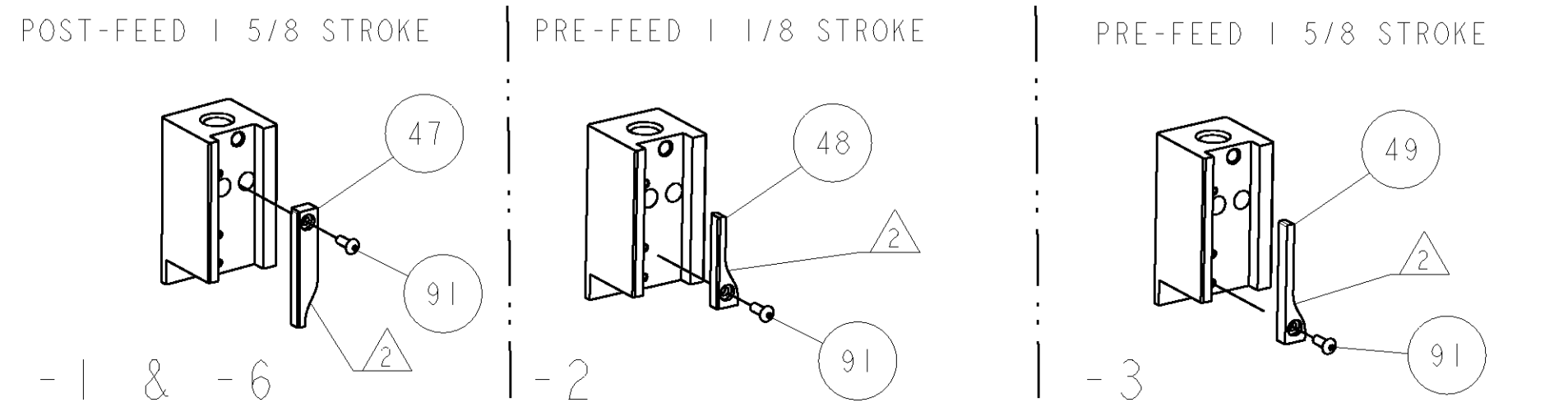
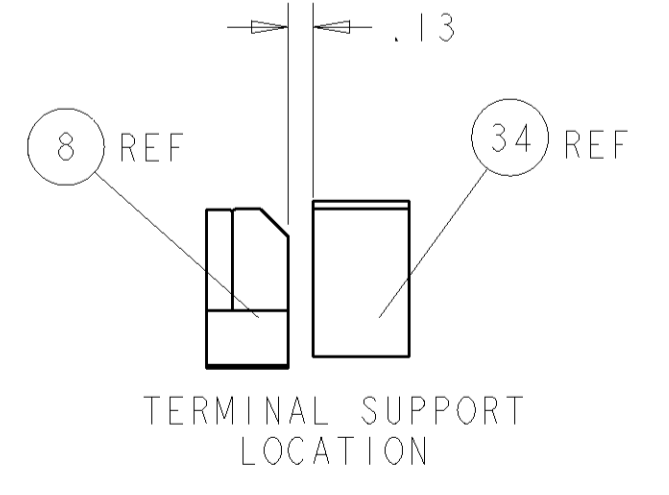
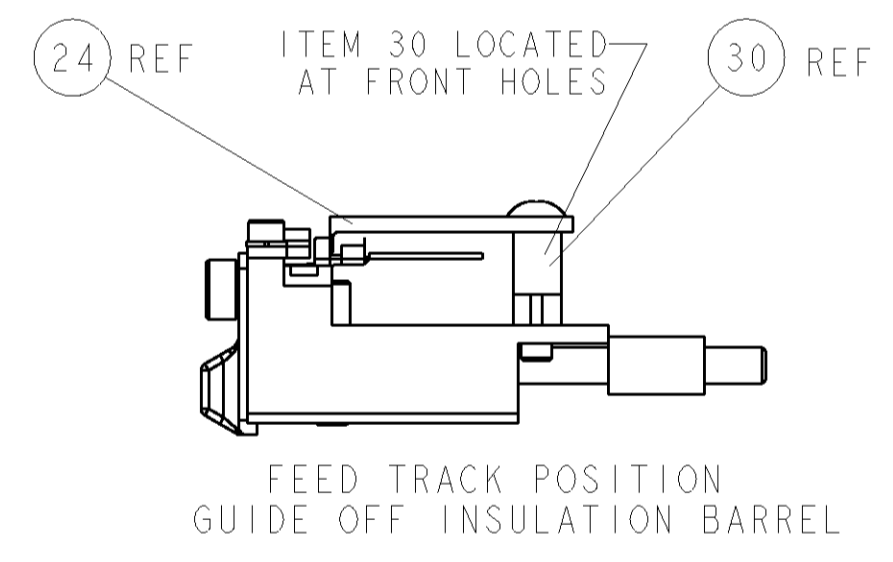
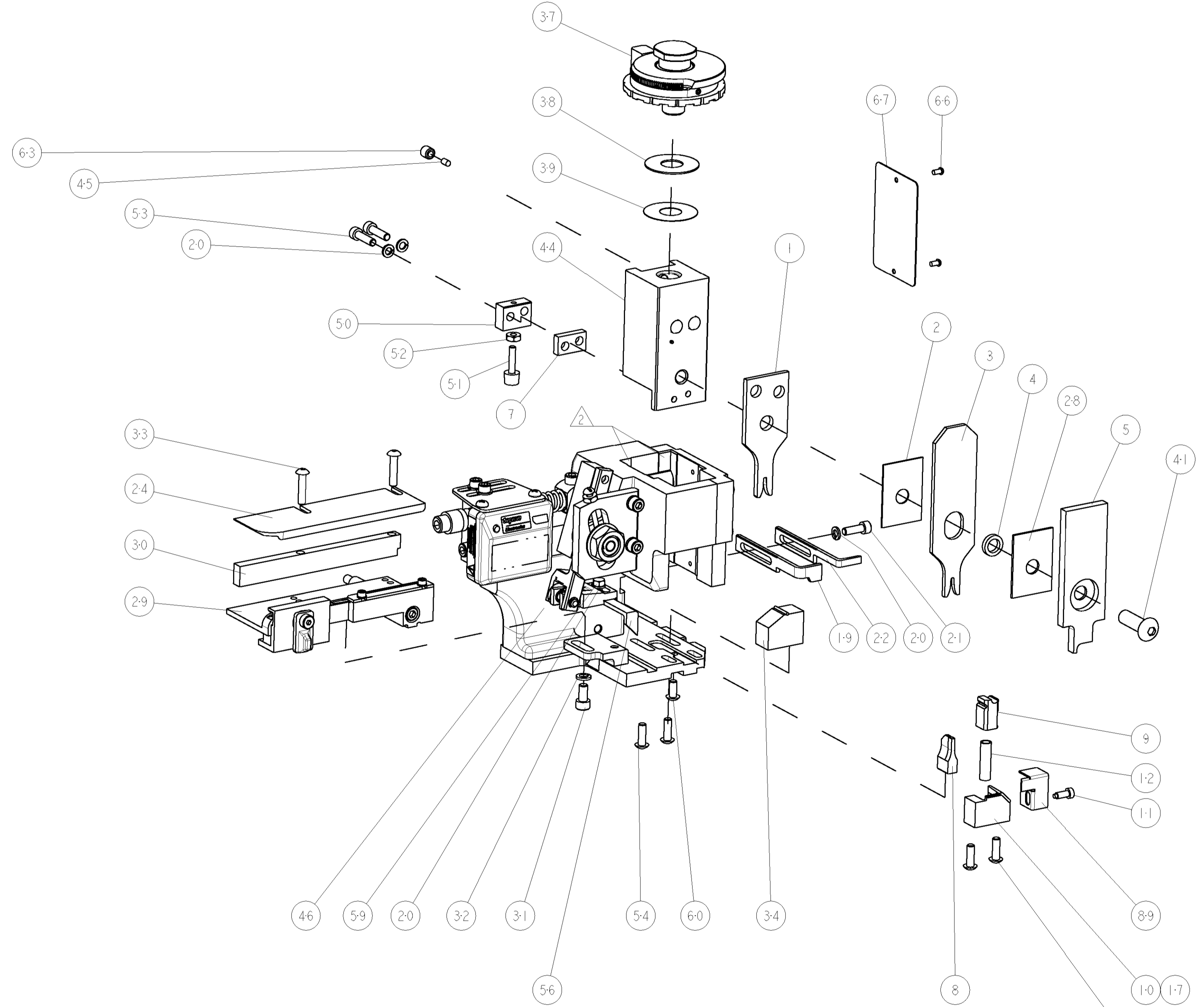


TERMINAL NAME: SUPER SEAL CONNECTOR, RECEPT., CONTACT				
TYCO PN	-	AMP TERMINAL - AMP CRIMP SPECS	REF SETTING	
3-1447221-3	-	CRIMP HEIGHT	WIRE SIZE	-
1437228-6	-	1.20±0.05mm [.047±.002]	1.25mm2	C1
-	-	1.05±0.05mm [.041±.002]	0.85mm2	D2
-	-	1.00±0.05mm [.039±.002]	0.75mm2	D6
-	-	-	-	-
-	-	CRIMP	SIZE	TYPE
-	-	WIRE	1.78mm [.070]	F
-	-	INSUL	2.16mm [.085]	0
WIRE STRIP LENGTH	TERM APPL SPEC	FEED	APPLICATOR INSTRUCTIONS	SET UP GAGE
3.5-4.5	114-78011	8.00	408-8040	458637-1

LOC	DIST	REV	DESCRIPTION	DATE	DWN	APPR
A	66		RELEASED	25APR2007	BH	BH

- △ RECOMMENDED SPARE PARTS
- △ GREASE LIGHTLY
- △ GUARD MUST BE IN PLACE WHEN OPERATING APPLICATOR IN A BENCH MACHINE

*** WARNING**
ON INSTALLATION, SET WIRE DISC TO LARGEST WIRE SIZE SETTING. USE OF SETTINGS BELOW MIN. REQUIRED CRIMP HEIGHT SETTING WILL CAUSE DAMAGE TO CRIMP TOOLING.



QTY	REF	DESCRIPTION	ITEM NO
-	-	455749-1 GUARD WINDOW	116
-	REF	679532-1 INSERT, GUARD	115
-	1	1-21002-7 SCR, BTN SKT HD CAP 6-32 X .375	91
-	1	318563-1 GUARD, FRONT CHIP	89
-	1	4088040 SF APPL INST 408-8040	72
-	1	217238-1 GENERAL INSTRUCTION PKG	71
-	1	461264-5 PLATE, IDENTIFICATION	67
-	2	21017-2 SCREW, DRIVE	66
-	1	21009-2 SCR, SET, SELF LOCKING 1/4-20 X .250	63
-	1	22733-8 SCR, BHSC, SELF-LOCKING, 8-32 X .375	60
-	1	2-22603-0 SCR, HEX HD CAP 8-32 X .312	59
-	1	458537-2 PAWL, FEED	56
-	4	2-21002-2 SCR, BTN SKT HD CAP 8-32 X .500	54
-	2	2-21000-8 SCR, SKT HD CAP 8-32 X .625	53
-	1	21018-5 NUT, HEX, REG 6-32	52
-	1	811242-2 BUMPER, HOLD DOWN	51
-	1	690753-1 SPACER, TONKER	50
-	-	690602-6 CAM, PRE FEED, 1 5/8	49
-	-	690602-5 CAM, PRE FEED, 1 1/8	48
-	-	690501-4 CAM, POST FEED, 1 5/8	47
-	1	459456-1 APPL. BASIC SUB ASSY (SIDE WISE MOCA)	46
-	1	690191-1 PLUG, NYLON	45
-	1	455673-1 RAM, SIDE FEED	44
-	1	7-21002-9 SCR, BTN SKT HD CAP 5/16-24 X 1.00	41
-	1	690125-1 SHIM SUB-ASSY	39
-	1	469367-8 SHIM	38
-	1	879103-3 FINE ADJUST HEAD ASSEMBLY	37
-	1	692776-2 TERMINAL SUPPORT	34
-	2	2-21002-4 SCR, BTN SKT HD CAP 8-32 X .750	33
-	1	21024-5 WASHER, SPRG LOCK, REG NO 10	32
-	1	3-21000-4 SCR, SKT HD CAP 10-32 X .375	31
-	1	1-1320908-5 SPACER, STRIP GUIDE	30
-	1	1633091-1 ASSEMBLY, STRIP GUIDE	29
-	1	1-455888-0 SPACER, CRIMPER	28
-	1	1320928-1 PLATE, STRIP GUIDE	24
-	1	690472-2 STRIPPER	22
-	1	2-21000-7 SCR, SKT HD CAP 8-32 X .500	21
-	4	21024-4 WASHER, SPRG LOCK, REG NO 8	20
-	-	691353-1 STRIPPER	19
-	1	679625-1 SHEAR HOLDER, FRONT (NO CUT)	17
-	1	3-22280-3 SPRING, COMPRESSION	12
-	1	690461-1 STOP, SHEAR	11
-	-	690459-1 SHEAR HOLDER, FRONT	10
-	1	462006-1 FLOATING SHEAR, FRONT	9
1	1	4-662185-9 ANVIL, COMBINATION .062	8
-	1	240641-4 SPACER	7
-	1	2-455889-0 DEPRESSOR, SHEAR	5
-	1	238011-4 BLOCK, CRIMPER SPACER	4
-	1	7-904741-5 CRIMPER, INSUL O PREMIUM	3
-	1	455888-6 SPACER, CRIMPER	2
1	1	3-456404-8 CRIMPER, WIRE PREMIUM	1

QTY	REF	DESCRIPTION	ITEM NO					
-77	-6	-3	-2	-1	U/M	PART NO	DESCRIPTION	ITEM NO

DIMENSIONS: INCHES 0 PLC ±.01 1 PLC ±.01 2 PLC ±.01 3 PLC ±.001 4 PLC ±.001 ANGLES ±.001		TOLERANCES UNLESS OTHERWISE SPECIFIED: FINISH: -		DWN: B. HIGMAN CHK: B. HIGMAN APVD: J. ELBIN	Tycos Electronics Harrisburg, PA 17105-3608
MATERIAL: - FINISH: -		APPLICATION SPEC: 114-78011 WEIGHT: - CUSTOMER DRAWING: -		PRODUCT SPEC: - NAME: FINE ADJUST SIDE FEED HDM APPLICATOR SIZE: A1 SCALE: 3:5 SHEET: 1 OF 1 REV: A	

CUSTOMER VIEWABLE ASSEMBLY