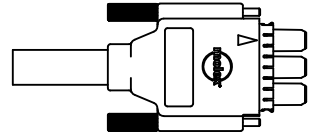
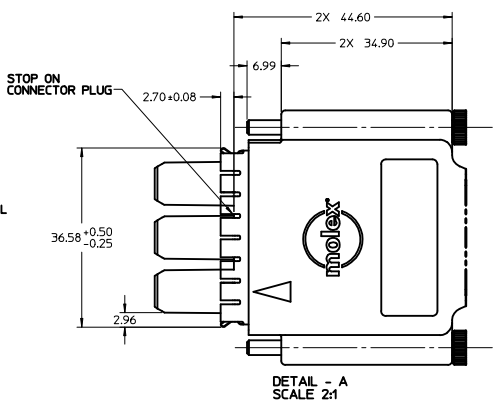
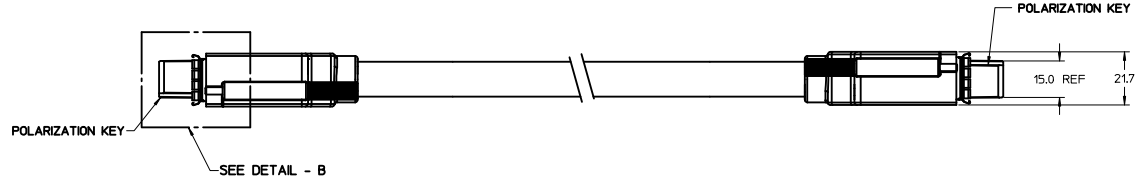
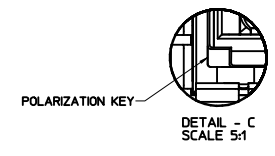
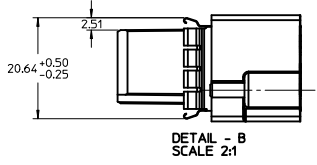


MATING VIEW OF P1
SCALE 2:1

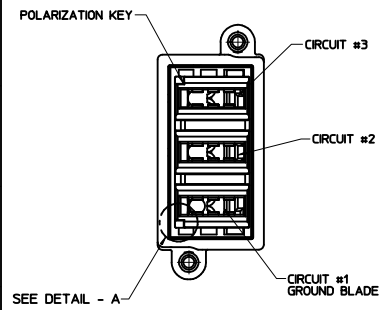


- NOTES**
- MATERIAL:**
 3 CKT HSG - PBT (UL 94V-0)
 TERMINAL - COPPER ALLOY
 PLATING: 30µm GOLD IN CONTACT AREA AND 100µm TIN OVER 50µm NICKEL OVERALL
 TPA - PBT (UL 94V-0)
 OVER-MOLD - PP RTP 154 UL94V-0
 EMI GASKET - 0.127 THK COPPER ALLOY
 PLATING: NICKEL PLATED (127-3.81 µm)
 JACK SCREW - STAINLESS 303
 PREMOLD - TEO RTP 2899 X 121388 UL94V-0
 COPPER TAPE
 BLOCKER - TEO RTP 2899 X 121388 UL94V-0
 PLUGGING LOCATION LABEL -
 WRAP LABEL -
 CABLE - UL RECOGNIZED AWM STYLE 2570
 (2) 8 AWG POWER TIN PLATED COPPER - HYTREL INSULATION
 (1) 10 AWG DRAIN - BARE COPPER
 SHIELD - 34 AWG TIN PLATED COPPER
 JACKET - XPBT BLACK
 - CABLE MATES TO PLUG SERIES 46817
 - THUMB SCREW AND OVER-MOLD REQUIREMENTS:
 THUMB SCREW MUST WITHSTAND A MINIMUM EXTRACTION FORCE OF 15kg (3.3 POUNDS)
 - STRAIN RELIEF MUST CONTAIN JACKET AND WITHSTAND A MINIMUM PULL FORCE OF 22 LBS IN ANY DIRECTION.
 - FINAL ASSEMBLY TO BE HI-POT TESTED
 - FROM POS #2 & #3
 - TO POS #1 (GND)
 - PRIMARIES TO GROUND/SHIELD
 - VOLTAGE: 1500 VRMS/2121 VDC
 - PRODUCT SPECIFICATION: TBD
 - THIS PRODUCT MEETS THE RESTRICTION OF HAZARDOUS SUBSTANCES IN ELECTRICAL AND ELECTRONIC EQUIPMENT RoHS DIRECTIVE (2002/95/EC)

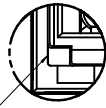
| MOLEX P/N | DIM - 'A' | DESCRIPTION |
|------------|-----------|-------------|
| 11119-1000 | 1000 | |
| | | |
| | | |
| | | |



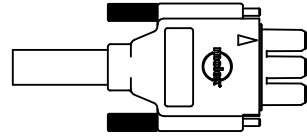
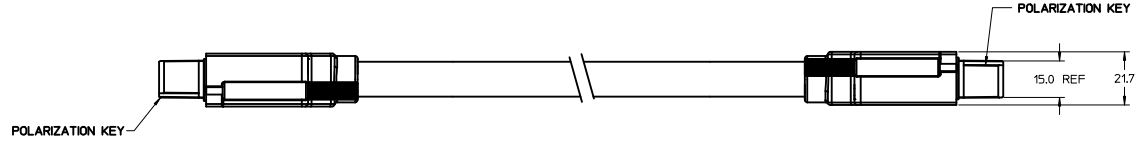
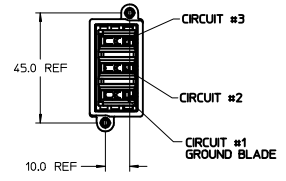
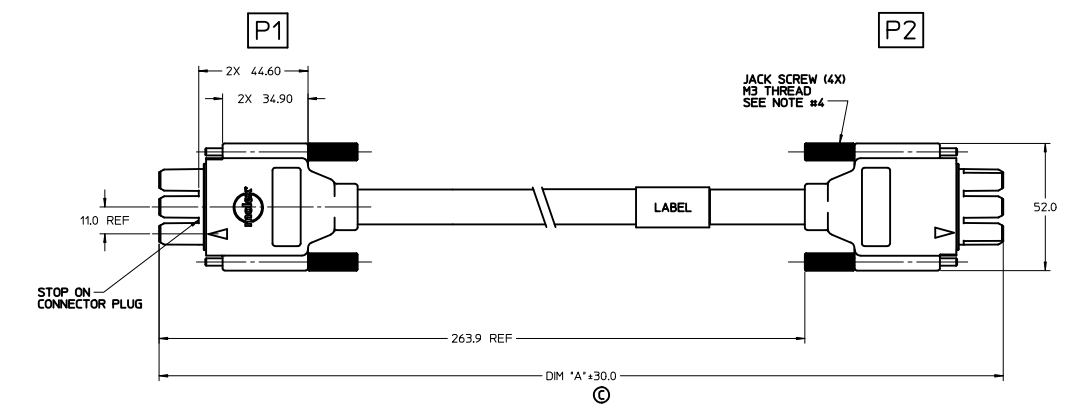
| | | | | | | | | |
|---|-------------------------------|--|--|--|--|--|------------------------|------------------------|
| CHANGED DIM A EC NO: CPG2012-0602 DRAWN BY: CHYD:REVES CHECKED BY: APPR:KMONROE DATE: 2011/02/20 DATE: 2012/02/07 | QUALITY SYMBOLS ▽=0 ▽=0 | GENERAL TOLERANCES (UNLESS SPECIFIED) | | DIMENSION STYLE MM ONLY | | SCALE 1:1 | DESIGN UNITS METRIC | THIRD ANGLE PROJECTION |
| | | DRAFT WHERE APPLICABLE MUST REMAIN WITHIN DIMENSIONS | | DRAWN BY: JREEVES DATE: 2010/05/18 CHECKED BY: JREEVES DATE: 2010/05/18 APPROVED BY: KMONROE DATE: 2010/07/19 | | TITLE POWER CABLE ASSY 3 CKTS WITH EMI GASKET | | |
| MATERIAL NO. SEE CHART | | | | MOLEX INCORPORATED | | DOCUMENT NO. SD-11119-001 | | |
| SIZE D THIS DRAWING CONTAINS INFORMATION THAT IS PROPRIETARY TO MOLEX INCORPORATED AND SHOULD NOT BE USED WITHOUT WRITTEN PERMISSION | | | | SHEET NO. 1 OF 1 | | | | |



MATING VIEW OF P1
SCALE 2:1



DETAIL - A
SCALE 5:1



- NOTES**
- MATERIAL:**
 - 3 CKT HSG - PBT (UL 94V-0)
 - TERMINAL - COPPER ALLOY
 - PLATING: 30m" GOLD IN CONTACT AREA AND 100m" TIN OVER 50m" NICKEL OVERALL
 - TPA - PBT (UL 94V-0)
 - OVER-HOLD - PP RTP #54 UL94V-0
 - JACK SCREW - STAINLESS 303
 - PREMOLD - TEO RTP 2899 X 121388 UL94V-0
 - COPPER TAPE
 - BLOCKER - TEO RTP 2899 X 121388 UL94V-0
 - PLUGGING LOCATION LABEL -
 - WRAP LABEL -
 - CABLE - UL RECOGNIZED AWM STYLE 2570
 - (2) 8 AWG POWER TIN PLATED COPPER - HYTREL INSULATION
 - (1) 10 AWG DRAIN - BARE COPPER
 - SHIELD - 34 AWG TIN PLATED COPPER
 - JACKET - XPBT BLACK
 - CABLE MATES TO PLUG SERIES 46817
 - THUMB SCREW AND OVER-HOLD REQUIREMENTS:
THUMB SCREW MUST WITHSTAND A MINIMUM EXTRACTION FORCE OF 15kg (3.3 POUNDS)
 - STRAIN RELIEF MUST CONTAIN JACKET AND WITHSTAND A MINIMUM PULL FORCE OF 22 LBS IN ANY DIRECTION.
 - FINAL ASSEMBLY TO BE HI-POT TESTED
 - FROM POS #2 & #3
 - TO POS #1 (GND)
 - PRIMARIES TO GROUND
 - VOLTAGE: 1500 VRMS/2121 VDC
 - PRODUCT SPECIFICATION: TBD
 - THIS PRODUCT MEETS THE RESTRICTION OF HAZARDOUS SUBSTANCES IN ELECTRICAL AND ELECTRONIC EQUIPMENT RoHS DIRECTIVE (2002/95/EC)

©

| MOLEX P/N | DIM - 'A' | DESCRIPTION |
|------------|-----------|-------------|
| 11119-2000 | 1000 | |
| | | |
| | | |
| | | |

| | | | | | |
|---|--|---|--|--|----------------------------------|
| CHANGE DIM A IEC NO: CPG2012-0602 DRAWN: PRATT 2011/02/20 CHKD: REEVES 2011/02/20 APPR: KMONROE 2012/02/07 | QUALITY SYMBOLS ▽=0 ▽=0 | GENERAL TOLERANCES (UNLESS SPECIFIED) mm INCH 4 PLACES ±--- ±--- 3 PLACES ±--- ±--- 2 PLACES ±0.18 ±--- 1 PLACE ±0.3 ±--- ANGULAR ±1/2° | DIMENSION STYLE MM ONLY SCALE 1:1 DESIGN UNITS METRIC THIRD ANGLE PROJECTION | DRAWN BY DATE JREEVES 2010/05/21 CHECKED BY DATE DATE | TITLE POWER CABLE ASSY 3 CKTS |
| | APPROVED BY DATE KMONROE 2010/07/19 | MATERIAL NO. DATE SEE CHART 2010/07/19 | | MOLEX INCORPORATED DOCUMENT NO. SD-11119-002 | |
| | DRAFT WHERE APPLICABLE MUST REMAIN WITHIN DIMENSIONS | | SIZE D THIS DRAWING CONTAINS INFORMATION THAT IS PROPRIETARY TO MOLEX INCORPORATED AND SHOULD NOT BE USED WITHOUT WRITTEN PERMISSION | | SHEET NO. 1 OF 1 |