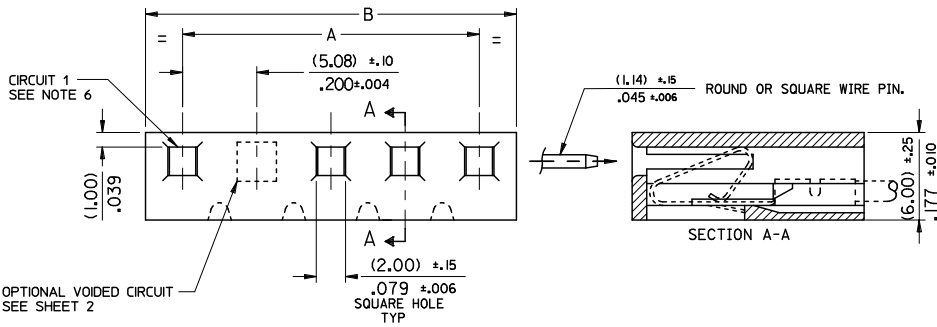
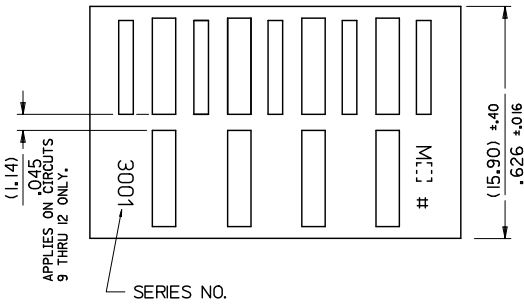


- NOTES:
1. MATERIAL: NYLON, UL94V-2, COLOR: NATURAL
 2. FINISH: N/A
 3. PRODUCT SPECIFICATION: PS-99020-0087
 4. THIS HOUSING USES KK TERMINAL SERIES 2478, 2578, AND 2878.
 5. THIS PART CONFORMS TO CLASS B REQUIREMENTS OF COSMETIC SPECIFICATION PS-45499-002.
 6. CIRCUIT 1 USED TO DEFINE VOID LOCATION



PART No.	ENG. No.	ENGLISH		METRIC	
		A	B	A	B
10-01-1124	E-3001-12	2.200 ±.010	2.400 ±.010	55.88 ±.25	60.96 ±.25
-1114	-11	2.000 ±.008	2.200 ±.010	50.80 ±.20	55.88 ±.25
-1104	-10	1.800 ±.008	2.000 ±.010	45.72 ±.20	50.80 ±.25
-1094	-9	1.600 ±.008	1.800 ±.010	40.64 ±.20	45.72 ±.25
-1084	-8	1.400 ±.008	1.600 ±.010	35.56 ±.20	40.64 ±.25
-1074	-7	1.200 ±.008	1.400 ±.010	30.48 ±.20	35.56 ±.25
-1064	-6	1.000 ±.004	1.200 ±.010	25.40 ±.10	30.48 ±.25
-1054	-5	.800 ±.004	1.000 ±.010	20.32 ±.10	25.40 ±.25
-1044	-4	.600 ±.004	.800 ±.010	15.24 ±.10	20.32 ±.25
-1034	-3	.400 ±.004	.600 ±.010	10.16 ±.10	15.24 ±.25
10-01-1024	E-3001-2	.200 ±.004	.400 ±.006	5.08 ±.10	10.16 ±.25



CORRECT 15,90 DIM. EC NO: UCP2011-0476 Q DRWN:MM/PPER 2010/12/03 CHKD:BELL APPR:F.SMITH 2010/12/06	QUALITY SYMBOLS	GENERAL TOLERANCES (UNLESS SPECIFIED)	DIMENSION STYLE	SCALE	DESIGN UNITS	THIRD ANGLE PROJECTION
	▽=0	mm INCH	MM/IN	1:1	METRIC	
	▽=0	4 PLACES ± --- ± ---	DRAWN BY DATE	TITLE		
		3 PLACES ± --- ± .010	P. MOORE 1998/09/15	KK (5.08)/.200 CRIMP TERMINAL HOUSING		
	2 PLACES ± 0.25 ± .014	CHECKED BY DATE	MOLEX INCORPORATED			
	1 PLACE ± 0.35 ± ---	MGOONEY 1999/03/12	SHEET NO. 1 OF 2			
	ANGULAR ± 1/2°	APPROVED BY DATE	DOCUMENT NO.			
	DRAFT WHERE APPLICABLE MUST REMAIN WITHIN DIMENSIONS	FSMITH 2010/12/06	SDE-3001-N-*			
		MATERIAL NO.	THIS DRAWING CONTAINS INFORMATION THAT IS PROPRIETARY TO MOLEX INCORPORATED AND SHOULD NOT BE USED WITHOUT WRITTEN PERMISSION			
		SEE CHART				

