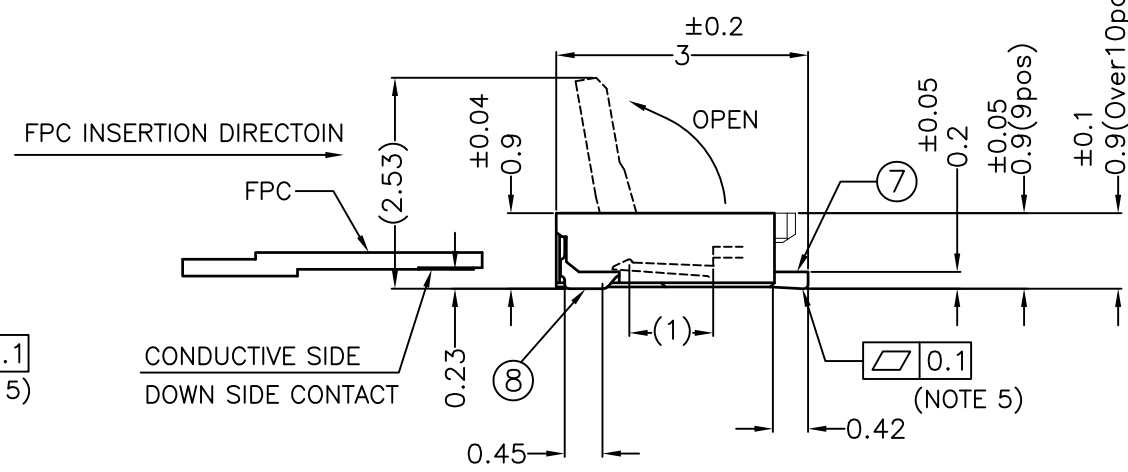
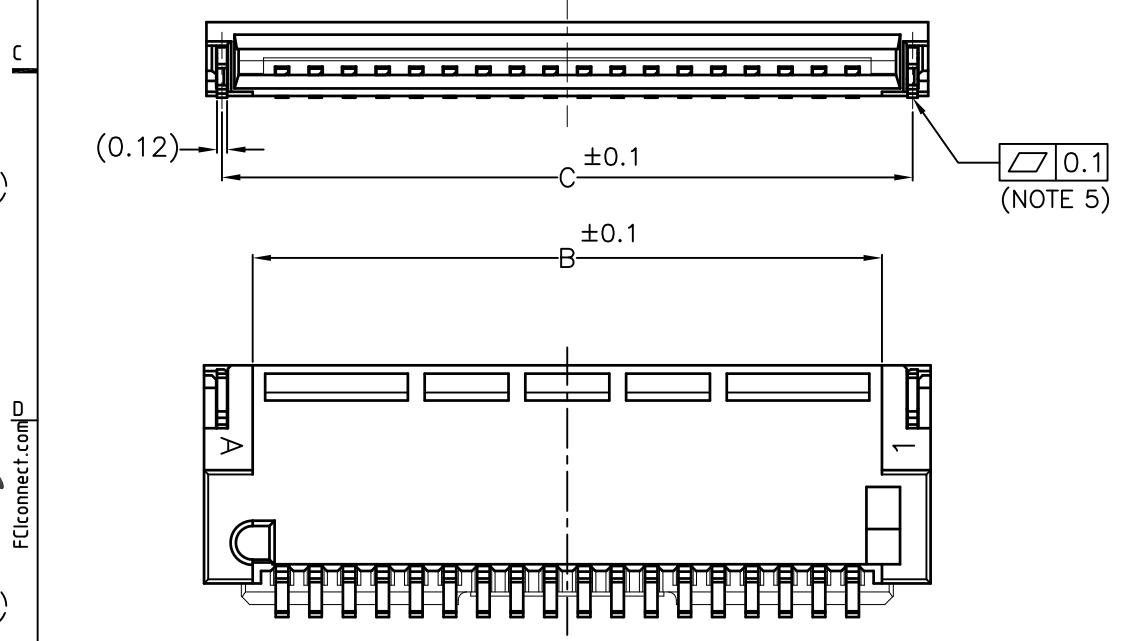
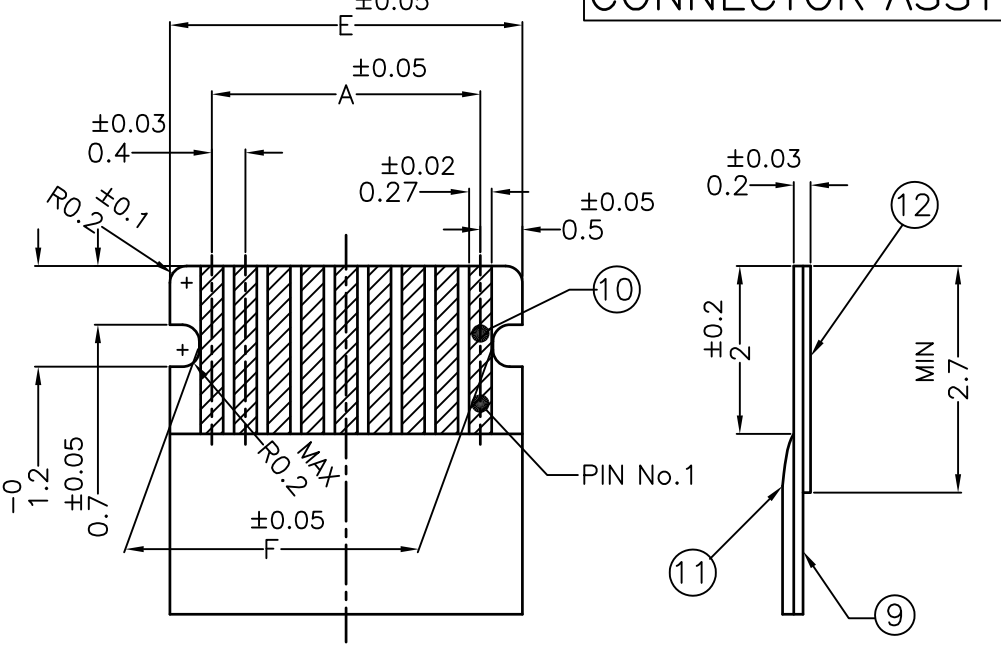
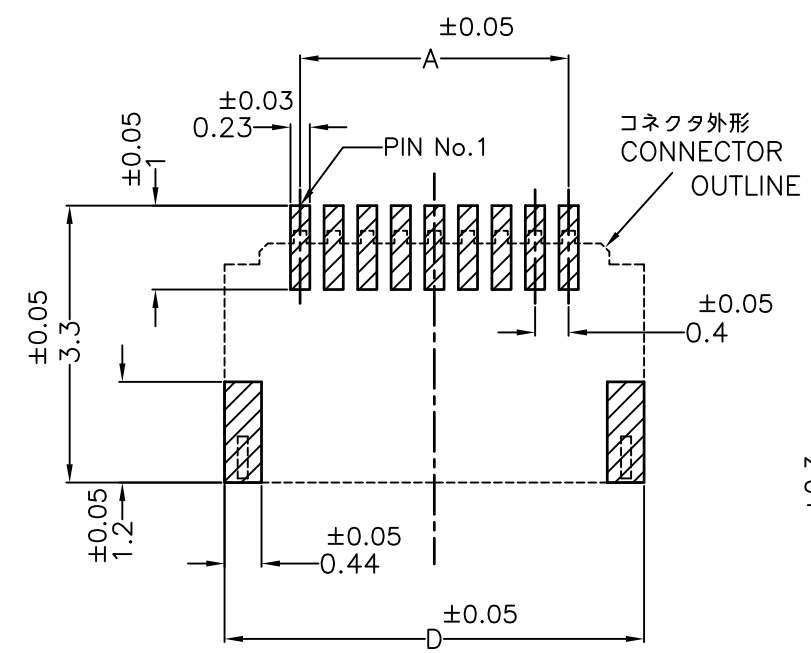
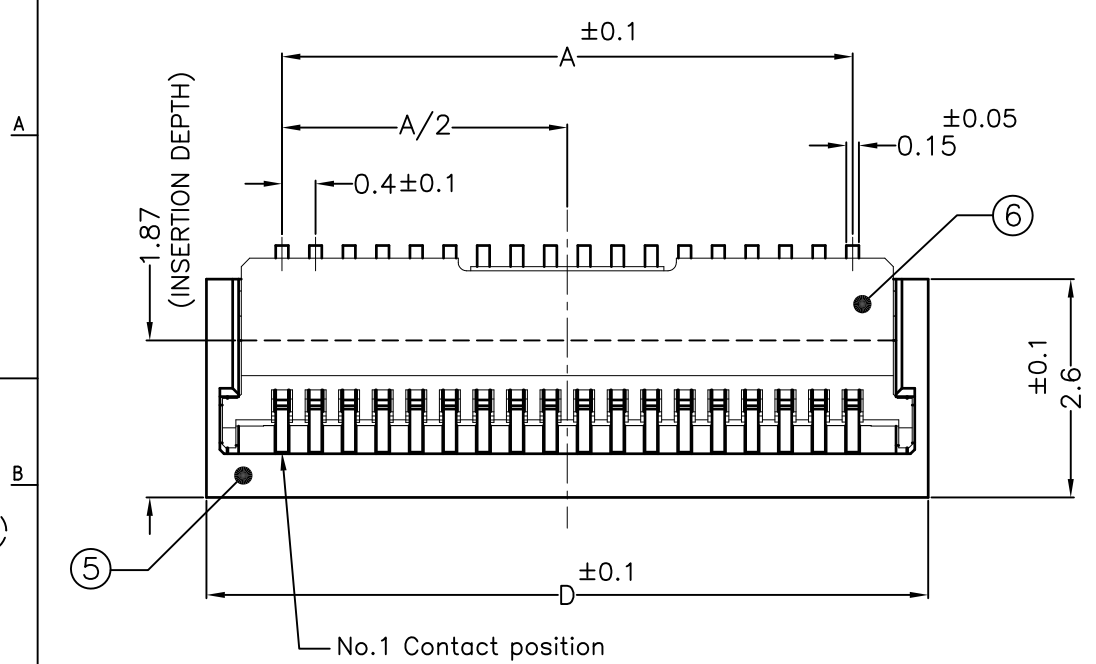


CONNECTOR ASSY



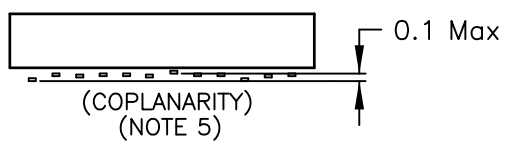
RECOMMENDED FPC PATTERN LAYOUT

PARTS TABLE (FPC)

| No. | PART NAME | MATERIAL |
|-----|-----------------|----------------------------------|
| ⑨ | BASE FILM | POLYIMIDE |
| ⑩ | CONDUCTOR | COPPER FOIL (PLATING : Au 0.1um) |
| ⑪ | OVER LAY | POLYIMIDE |
| ⑫ | STIFFENER BOARD | POLYIMIDE |

NOTE
 5. CONTACT COPLANARITY : 0.1 MAX.
 6. This product meets European Union Directives and other country regulations as described in GS-22-008

注記
 5. 端子コプラナリティ : 0.1以下
 6. 本製品は、GS-22-008に記載されたヨーロッパ連合指令と他国の規制に適合しています。



PARTS TABLE (CONNECTOR) n=Number of Contacts

| No. | PART NAME | QTY. | NOTE |
|-----|------------|------|--|
| ⑤ | HOUSING | 1 | HIGH TEMP THERMOPLASTIC LCP VECTRA E473i COLOR : BLACK , UL94V-0, HALOGEN FREE |
| ⑥ | ACTUATOR | 1 | HIGH TEMP THERMOPLASTIC PPS DIC FZ-4020-A4 COLOR : BLACK , UL94V-0, HALOGEN FREE |
| ⑦ | CONTACT | n | COPPER ALLOY (CORSON ALLOY) CONTACT AREA : Au 0.05um MIN SOLDERING AREA : Au 0.05um MIN UNDER PLATING : Ni 3±2um ALL OVER |
| ⑧ | FIXING TAB | 2 | COPPER ALLOY (PHOSPHOR BRONZE) TIN PLATING 2~5um UNDER PLATING : Ni 3±2um ALL OVER |

NOTE
 ADHESIVE METHOD OF STIFFENER BOARD SHALL BE HEAT CRIMPING METHOD AND THERMOSETTING ADHESIVE SHALL BE USED.

| TOOLING AVAILABLE | No. of Cont | DIM "F" | DIM "E" | DIM "D" | DIM "C" | DIM "B" | DIM "A" | PRODUCT NO. |
|-------------------|-------------|---------|---------|---------|---------|---------|---------|-----------------|
| YES | 18 | 7.1 | 7.8 | 8.6 | 8.23 | 7.5 | 6.8 | 10121013-18BHLF |
| TBD | 9 | 3.5 | 4.2 | 5.0 | 4.63 | 3.9 | 3.2 | 10121013-09BHLF |

| | | | | | |
|-------------|-------------|-----------|------------|----------------|---|
| mat'l. code | surface | tolerance | projection | product family | CODE |
| --- | ISO 1302 | ISO 406 | ISO 1101 | 588F | JP |
| lfr | description | ecn no | dr | date | tolerances unless otherwise specified |
| A | RELEASED | | N.S | 2013-07-01 | angles linear 0.X ±0.3 0.XX ±0.3 0.XXX ±0.3 |
| | | | | | mm |
| | | | | | scale 8:1 |
| | | | | | dwg no |
| | | | | | sheet 2 of 2 size |
| | | | | | 10121013 A2 |
| | | | | | type PRODUCT CUSTOMER Drawing |
| | | | | | Rev. A |

Mouser Electronics

Authorized Distributor

Click to View Pricing, Inventory, Delivery & Lifecycle Information:

[FCI / Amphenol:](#)

[10121013-18B10EHLF](#)