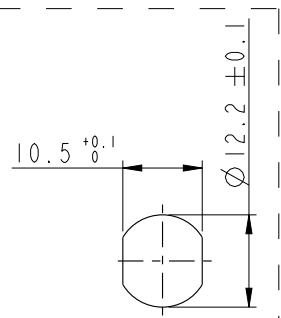
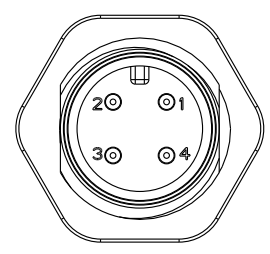
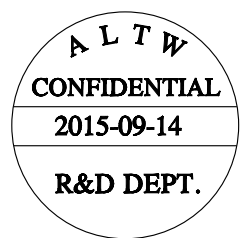
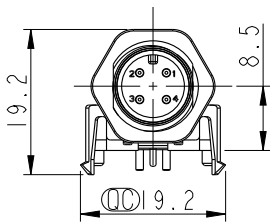
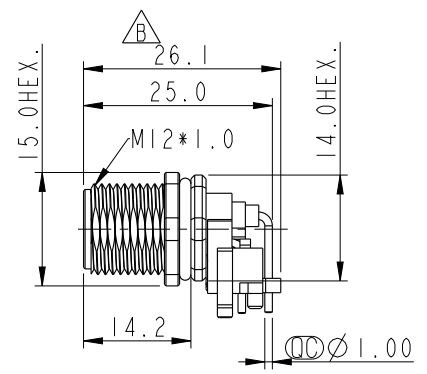
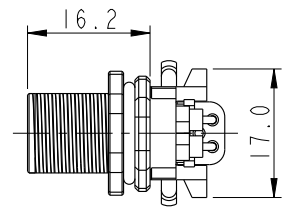
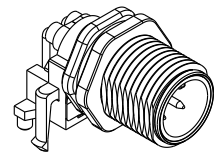
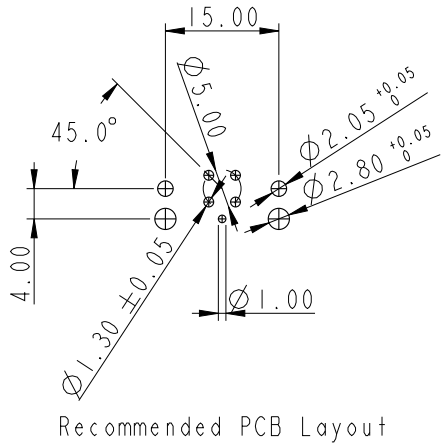
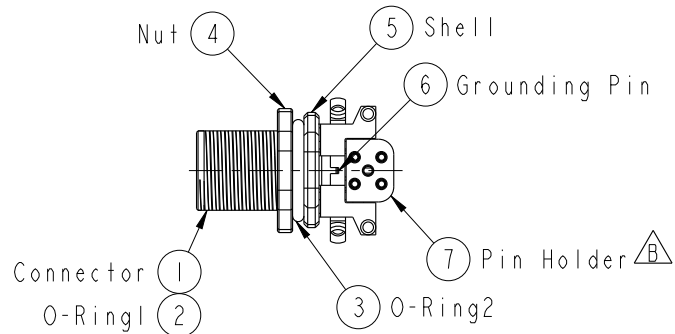


REV.	ECN NO.	DATE	SIGN	DESCRIPTION
A		2012-11-07	Tao-Cheng	Change Rev.02 To Rev.A
B	LE315A0027	2015-09-14	Yulong_wang	Add the Pin Holder.



- Note:
- * ⌀ Important Dimension To Check.
 - * Waterproof Rating: IP67(Mated Waterproof)
 - * Connector: PBT+PC, Black
 - * Male Pins: Copper Alloy, Gold Plated
 - * Shell: Zinc Alloy, Nickel Plated
 - * Nut: Zinc Alloy, Nickel Plated
 - * Grounding Pin: Copper Alloy, Tin Plated
 - * O-Ring1: Silicone, Black
 - * O-Ring2: Silicone, Gray
 - * Pin Holder: PBT+PC, Black $\triangle B$
 - * For Panel Thickness Max. 3.0mm
 - * For PCB Thickness Max. 1.5mm



UNIT:mm	⌀	⌀
TOLERANCE	.X	±0.25
	.XX	±0.1
	.XXX	±0.05
	ANGLES	±1°

TITLE M12, 90° Panel, w/ Grounding Pin 4PIN MCONN MPIN (Mated Waterproof)		
SCALE	SIZE	SHEET
1:1	A4	1 OF 1
REV.	WC-REV.	⌀ Inspection item
B	A.7	

Amphenol LTW
安費諾亮泰企業股份有限公司

ITEM NO	12S-04PMMR-SF7001	DRAWN BY	Yulong_wang	DATE	2015-09-14
DWG NO	12S-04PMMR-SF7001	CHECKED BY	Cary	DATE	2015-09-14
CUSTOMER	ALTW	APPROVED BY	Jerry	DATE	2015-09-14

THIS DOCUMENT IS SUBJECT TO CHANGE WITHOUT NOTICE. IT IS CONFIDENTIAL AND A PROPERTY OF Amphenol LTW. DISCLOSURE TO THIRD PARTY HAS TO BE AUTHORIZED BY Amphenol LTW.

A B C D E F