

APD is a direct, in-line and bulkhead sensor connector that is resistant to engine, transmission and brake fluid. It also boasts very low contact resistance, so you can benefit from maximum signal integrity. APD is available in 1-, 2-, 3-, 4-, 6- and 7 position versions and has been designed to meet all DIN 72585 requirements.

*Applications for the 4- and 7-way connector include:*

- Sensors
- Traction / Anti Skid Control
- Brake Control (ABS)
- Magnetic Switch Control Systems
- Valve Control (Water, Oil, Air, Pressure)
- Lightening systems on Trucks and Trailers



**Electrical Data**

Voltage	48 VDC max.
Current	12 A max. for wire size 0,5 mm <sup>2</sup> / 25°C
	19 A max. for wire size 1,5 mm <sup>2</sup> / 25°C
Contact resistance	≤ 5mΩ
Test Voltage	1000 VAC (Ueff)
Insulation resistance	10MΩ

**Mechanical Data**

Sealing acc. to IEC 529 and DIN 40050, Part 9	IP 67 and IP 69K
Operating Temperature Range	-40°C / 125°C
Shock / Vibration	20g acc. to DIN 72585
Durability	50 Mating cycles

**Materials**

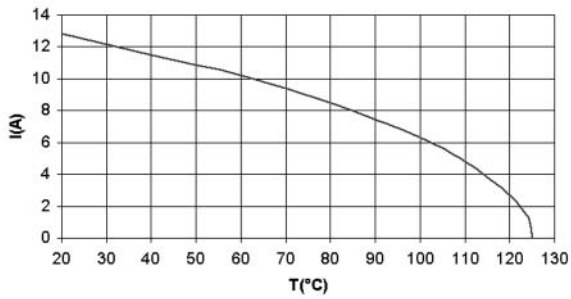
Connector housing	PBT
O-ring	HNBR
Contacts	Copper alloy, tinned
Coupling nut	PA

**Standards and Specifications (in accordance with DIN 72585) Environmental**

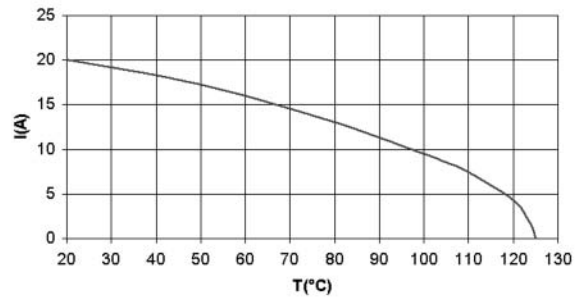
DIN 40050, Part 9	Sealing
DIN 50016	Humidity
DIN 50021	Resistance against fluids, Salt spray test
DIN 51512	Lubricants such as engine oil, grease, etc.
DIN EN 590	Diesel fuel, gasoline
DIN ISO 4925	Brake fluids, anti-freeze, coolants

Derating Curve

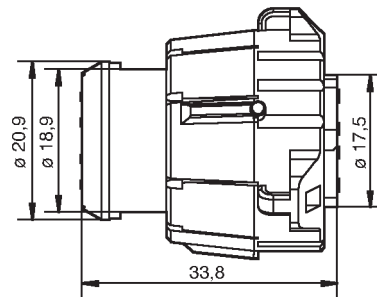
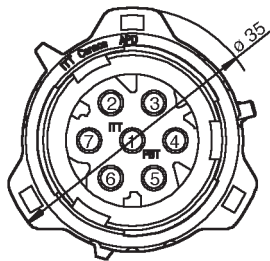
APD 6-/7-WAY  
Cable 0,5 mm<sup>2</sup>



APD 6-/7-WAY  
Cable 1,5 mm<sup>2</sup>



Plug, 6/7-way



	Order No.	Designation	Code	Color
7 way	121583-0018	APD-1BS7	1	black (RAL 9005)
6 way	120110-0024	APD-1BS6`	1	black (RAL 9005)

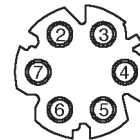
Packaging unit 100 pcs.

Socket Crimp-Contacts, Individual wire-seal, Wire filler, see page 15.  
Accessories, see page 41 and 42.

Coding, 6/7-way Layouts

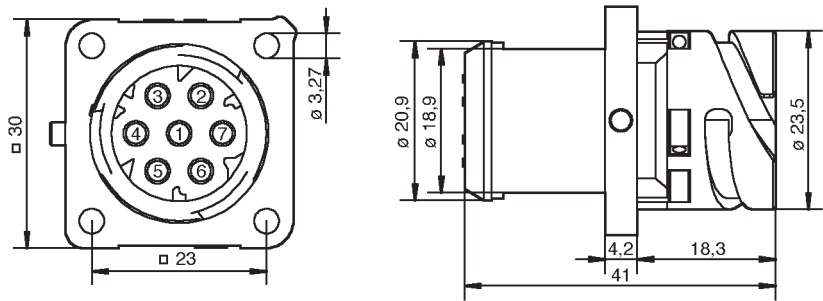


7 way



6 way

Flange Receptacle, 6-/7-way for standard contacts

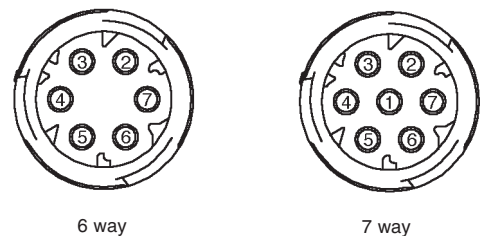


	Order No.	Designation	Code	Color
7 way	121583-0020	APD-1AP7	1	black (RAL 9005)
Optional 6 way	120110-0083	APD-1AP6-SPL	1	black
		(contact cavity 1 closed)		
7 way	120110-0020			black

Pin Crimp-Contacts, Individual wire-seal, Wire filler, Flange gasket, see page 15.  
Accessories, see page 41 and 42.

Flange Receptacle, 6-/7-way for crimp press-in contacts

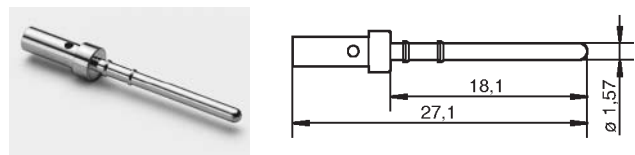
Order No. 120110-0020 6-way Flange Receptacle  
Order No. upon request 7-way Flange Receptacle



Press-in Crimp Contact

For Flange and Jam Nut Receptacle 6-/7-way

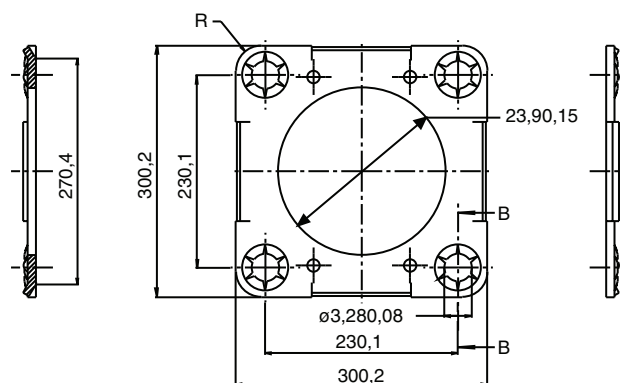
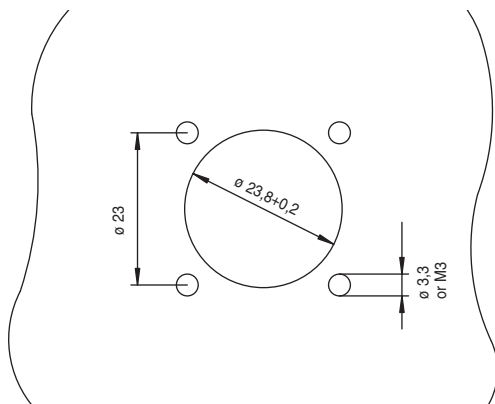
Order No. 330-8672-021 (tinned) (0,75 - 1,5 mm<sup>2</sup>)  
330-8672-019 (tinned) (0,35 - 0,75 mm<sup>2</sup>)  
with gold flash plate upon request  
Packaging unit: 100 pcs



Note - Press-in Crimp Contacts are not removable after insertion

Panel Cut Out

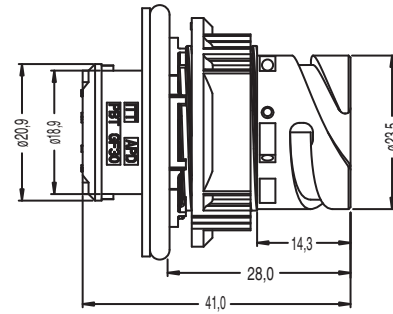
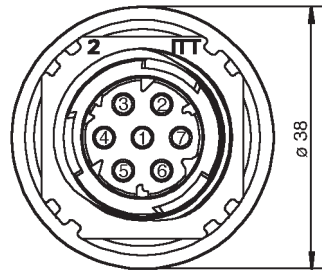
Flange for all Flange Receptacles



Order Number: 066-8516-005

Dimensions shown in mm  
Specifications and dimensions subject to change

Jam Nut Receptacle, 6-/7-way for standard contacts



	Order No.	Designation	Code	Color
7 way	121583-0019	APD-1CP7	1	black (RAL 9005)

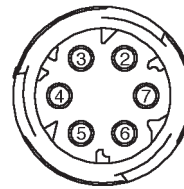
Packaging unit 100 pcs.

Crimp-Contacts, Individual wire-seal, Wire filler, see page 15.  
Accessories, see page 41 and 42.

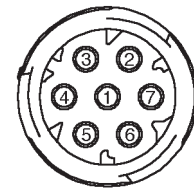
Jam Nut Receptacle, 6-/7-way for crimp press-in contacts

Order No. upon request 6-way Jam Nut Receptacle

Order No. upon request 7-way Jam Nut Receptacle



6 way

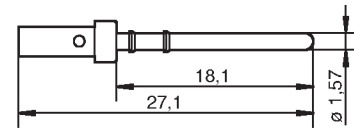


7 way

Press-in Crimp Contact

For Flange and Jam Nut Receptacle 7-way

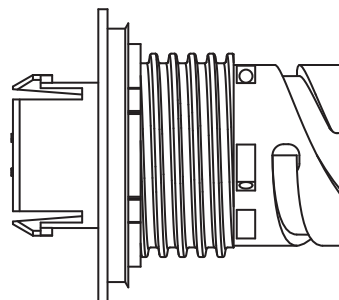
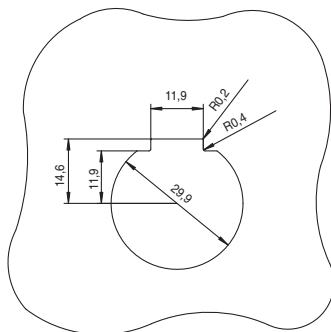
Order No.  
330-8672-021 (tinned) (0,75 - 1,5 mm<sup>2</sup>)  
330-8672-019 (tinned) (0,35 - 0,75 mm<sup>2</sup>)  
with gold flash plate upon request  
Packaging unit: 100 pcs



Note - Press-in Crimp Contacts are not removable after insertion

Panel Cut Out

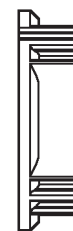
Flange for all Flange Receptacles



Housing



O-ring



Jam Nut

Thickness: Standard: min. 1,0 / max. 4,0 mm Special: min. 2,0 / max. 5,0 mm

Jam Nut, special

Designation for special wall thickness 2,0 - 5,0 mm Order No. 217-8516-001



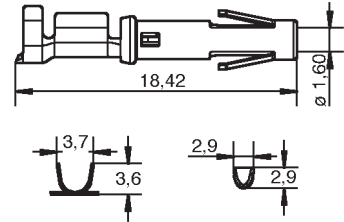
Dimensions shown in mm  
Specifications and dimensions subject to change

www.ittcannon.com

**Socket Crimp-Contacts 1,6 mm Standard Tinned, 3000 contacts per reel**

Order No. 192900-0001 \* (0,5 - 1,5 mm<sup>2</sup>)  
 192900-0003 Loose Piece Bulk-pack

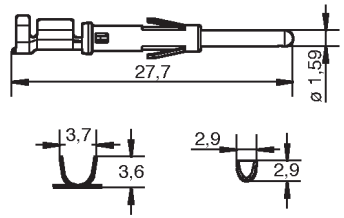
\* Crimp Tool - 112108-0014



**Pin Crimp-Contacts 1,6 mm Standard Tinned, 3000 contacts per reel**

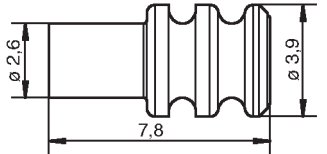
Order No. 192900-0000 \* (0,5 - 1,5 mm<sup>2</sup>)  
 192900-0002 Loose Piece Bulk-pack

\* Crimp Tool - 112108-0014



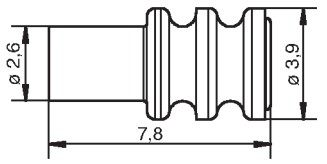
**Individual Wire Seals**

Designation	Order No.	Part Number
10GR3940 Wire insulation ø 1,4 - 2,0 mm / gray	273-8506-008	121667-0022
10YE3940 Wire insulation ø 1,9 - 2,1 mm / yellow	273-8506-009	121667-0023
10RD3940 Wire insulation ø 1,2 - 1,6 mm / red	273-8506-010	121667-0024



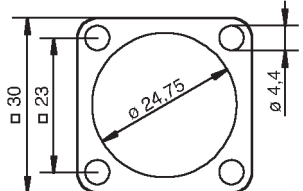
**Wire Filler**

Designation	Order No.	Part Number
10WH3940 white	273-8506-011	121667-0025



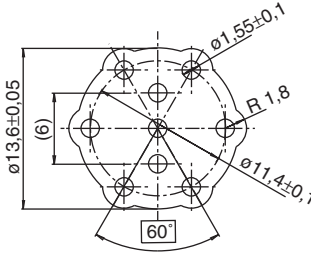
**Gasket for all Flange Receptacles**

Order No. \_\_\_\_\_  
 075-8503-000 (-55/125° C)  
 075-8503-004 (-30/200° C)  
 Packaging unit 100 pcs.



**Alignment Disc**

Order No. 052-8509-002  
 for pin contact only



Dimensions shown in mm  
 Specifications and dimensions subject to change

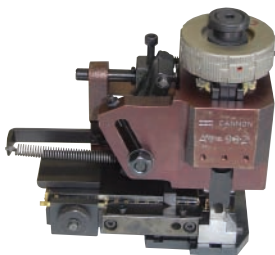


**Crimp Machine for Volume Production**



Designation:	Order No.
EPS 2000	121586-5043

**Quick Change Tool for above Crimp Machine: (Mini Applicator)**



Contact / Socket	Designation	Order No. (to be mentioned on order)
192900-0001 (0,5 - 1,5 mm <sup>2</sup> )	WWZ.20-100-Trident 16-18-002	121586-5190
Contact / Socket	Designation	Order No. (to be mentioned on order)
192900-0000 (0,5 - 1,5 mm <sup>2</sup> )	WWZ.20-100-Trident 16-18-002	121586-5190

**Contact Extraction Tool**



Description	Order No.
Trident Extraction Tool Wire Insulation Stripping length: 4,5 mm	192922-1450

**Crimp and assembly Tools for press in contacts**



Basic - Hand Crimp Tool M22520-1-01	Order No. 995-0001-585
Insertion Tool CIT-APD 16-TIP	317-8648-008
Hand Lever - Press CHPZ-240	121586-0081
Ragged Tool	192990-7600

