

THIS DRAWING IS UNPUBLISHED
 ALL RIGHTS RESERVED

REVISED		REVISIONS		DATE	BY	APP'D
1	1	REV PER ECD	12-000119	1-6-12	CT	WB

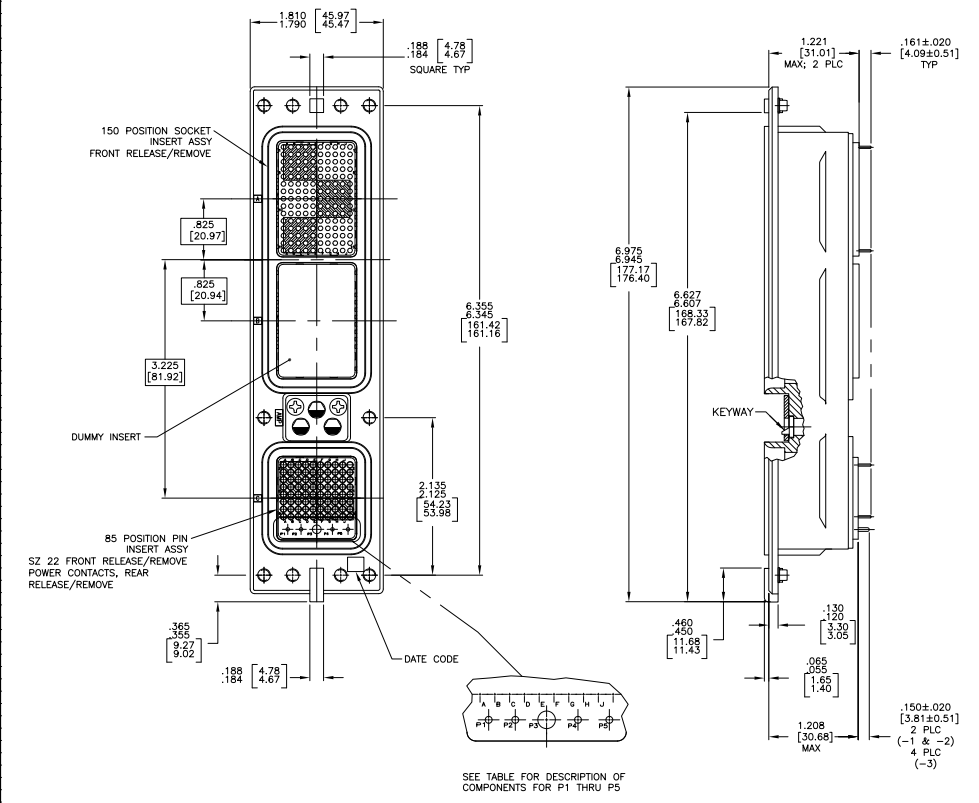
- CONNECTOR DIMENSIONS ARE PER ARINC 600 SPECIFICATION.
- CONNECTOR IS SUPPLIED WITH CONTACTS AS LISTED IN TABLE.
- KEYING SHOWN IN POSITION "01" FOR ILLUSTRATION ONLY. CONNECTORS SHIPPED WITH KEYING INSTALLED IN POSITION PER TABLE. FOR POSITION "00" KEYING HARDWARE SHIPPED UNASSEMBLED.
- DUST COVER INSTALLED FOR SHIPPING (NOT SHOWN).

COMPONENT	MATERIAL	FINISH
SHELL	DIE CAST ALUMINUM PER ASTM-B-95	ELECTROLESS NICKEL PER MIL-C-26074
INSERT RETENTION PLATES	ALUMINUM ALLOY PER ASTM-B-209	ELECTROLESS NICKEL PER MIL-C-26074
FLAT HEAD SCREWS	STAINLESS STEEL	PASSIVATED
POLARIZING KEYS	ZINC ALLOY PER ASTM-B-96	-
150 & 85 INSERTS	THERMOSET OR THERMOPLASTIC RESIN PER MIL-W-24519	-
POLARIZING KEY RETAINING PLATE	ALUMINUM ALLOY PER ASTM-B-209	BURN ANODIZED PER MIL-A-8825
DUMMY INSERT	ALUMINUM ALLOY PER ASTM-B-95	ELECTROLESS NICKEL PER MIL-C-26074

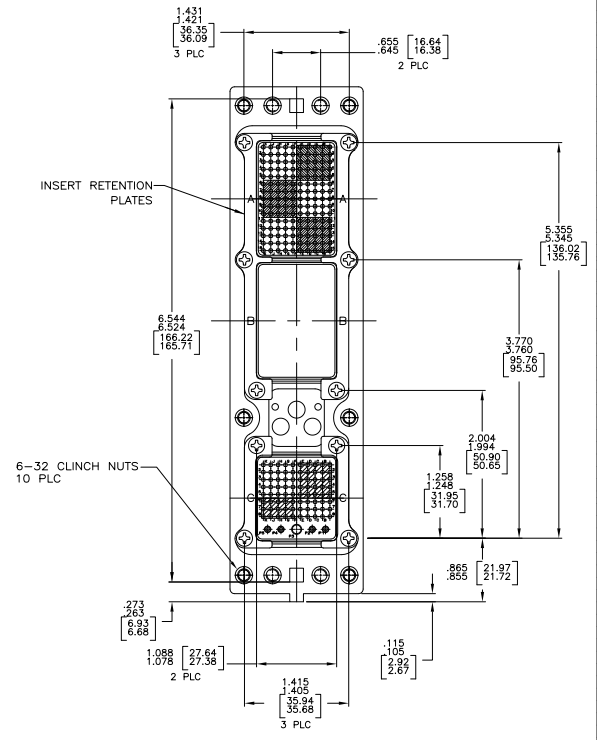
177	MODULE A 211431-2 (SIZE 22 POSTED; QTY=150) MODULE B (NONE) MODULE C 211431-2 (SIZE 22 POSTED; QTY=80) 208265-3 (SIZE 20 CRIMP; QTY=3) P2, P3 & P5 (NOT INSTALLED)	1996164-3
91	MODULE A 211431-2 (SIZE 22 POSTED; QTY=150) MODULE B (NONE) MODULE C 211431-2 (SIZE 22 POSTED; QTY=80) 1663533-5 (SIZE 20 POSTED; QTY=2) P4, P5 208268-3 (SIZE 16 CRIMP; QTY=1) P3 (NOT INSTALLED) 208265-3 (SIZE 20 CRIMP; QTY=2) P1, P2 (NOT INSTALLED)	1996164-2
99	MODULE A 211431-2 (SIZE 22 POSTED; QTY=150) MODULE B (NONE) MODULE C 211431-2 (SIZE 22 POSTED; QTY=80) 1663533-5 (SIZE 20 POSTED; QTY=2) P4, P5 208268-3 (SIZE 16 CRIMP; QTY=1) P3 (NOT INSTALLED) 208265-3 (SIZE 20 CRIMP; QTY=2) P1, P2 (NOT INSTALLED)	1996164-1
KEYING POSITION	CONTACTS INCLUDED	PART NUMBER

THIS DRAWING IS A CONTROLLED DOCUMENT. **TE** TE Connectivity
 RPT ASSY SIZE 2, ARINC 600 (150/DUMMY/85)
 100779 G=1996164
 CUSTOMER DRAWING

REV	DATE	DESCRIPTION	BY	APP
1		SEE SHEET #1		



SEE TABLE FOR DESCRIPTION OF COMPONENTS FOR P1 THRU P5



THIS DRAWING IS A CONTROLLED DOCUMENT.		BY: VEAGER	TRAVEL		TE Connectivity
DESIGNED BY: IMACKSTON	DATE: 11/14/05	CHK: IMACKSTON	TRAVEL		RPT ASSY SIZE 2ARINC 600 (150/DUMMY/85)
DRAWN BY: IMACKSTON	DATE: 11/14/05	CHK: IMACKSTON	TRAVEL	REV: 1	REWORKED TO: ---
DATE: 11/14/05	DATE: 11/14/05	DATE: 11/14/05	DATE: 11/14/05	SIZE: A1	DATE: 11/14/05
DATE: 11/14/05	DATE: 11/14/05	DATE: 11/14/05	DATE: 11/14/05	SIZE: 1996164	DATE: 11/14/05
DATE: 11/14/05	DATE: 11/14/05	DATE: 11/14/05	DATE: 11/14/05	SIZE: 1996164	DATE: 11/14/05