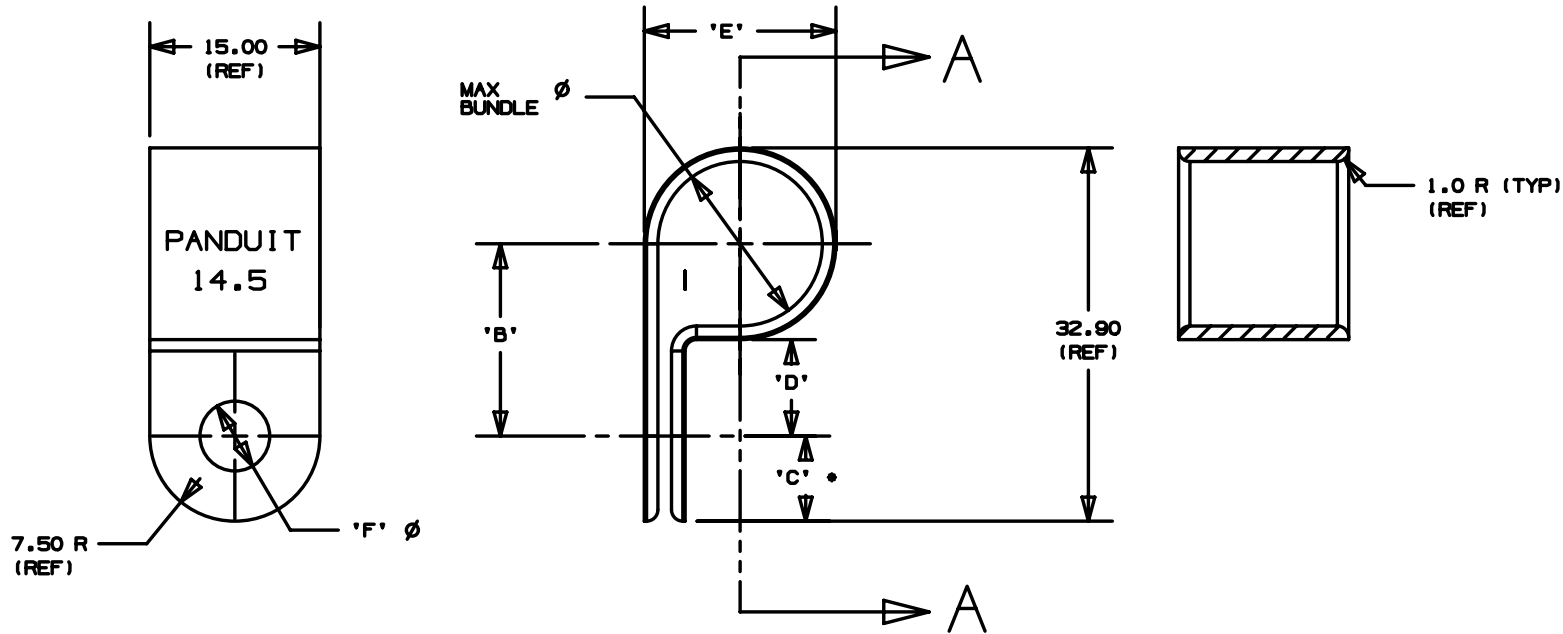


THIS COPY IS PROVIDED ON A RESTRICTED BASIS AND IS NOT TO BE USED IN ANY WAY DETRIMENTAL TO THE INTERESTS OF PANDUIT CORP.

PANDUIT PART NO.	MAXIMUM BUNDLE DIA.	DIMENSIONS (TOL: ±.5)					WEIGHT grams / 100 pcs
		'B'	'C'	'D'	'E'	'F'	
CCH57-S12-_30	14.5	16.5	8	8	16.9	6.2	120

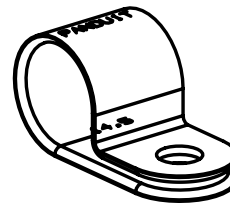


SECTION A-A

DIMENSIONS ARE METRIC [mm]	
CAD FILENAME/LAYERS	G01932BK_PB_CCH57S12_02
CORP. TINLEY PARK, ILLINOIS	
FIXED CABLE CLAMP	
Unless otherwise specified, all dimensions are metric tolerance; ±0.5mm	
DRAWN BY JAD	MAT'L: NONE
DATE 4/28/03	SEE NOTE 1
CHK'D	DWG NO. GB1932BK
	DWG SIZE A

NOTES:

- SEE CURRENT PRICE SHEET FOR PART NUMBER SUFFIX DESIGNATION FOR PACKAGE SIZE AND COLOR.
- MATERIAL: HEAT STABILIZED NYLON 6/6
- COLOR: BLACK
- MOUNTING:
HOLE DIAMETER: 6.2
SCREW SIZE: M6



SCALE: FULL

REV	DATE	BY	CHK	DESCRIPTION	ECN	R	CUST	SUP
2	4/28/03	JAD		COMPLETELY REVISED REMOVED GERMAN TEXT	GB1932BK	2		

Mouser Electronics

Authorized Distributor

Click to View Pricing, Inventory, Delivery & Lifecycle Information:

[Panduit:](#)

[CCH57-S12-M30](#)