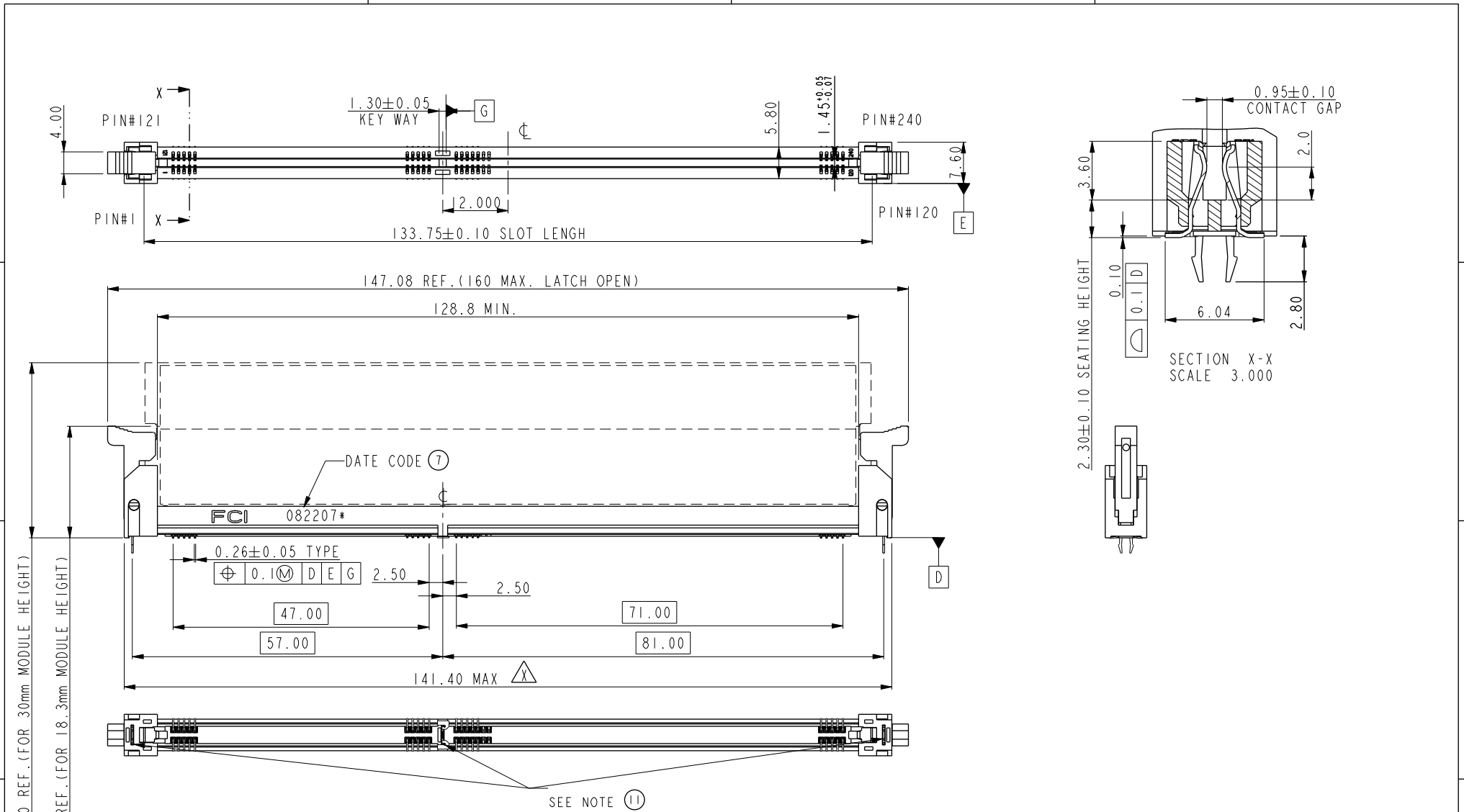




Copyright FCI.

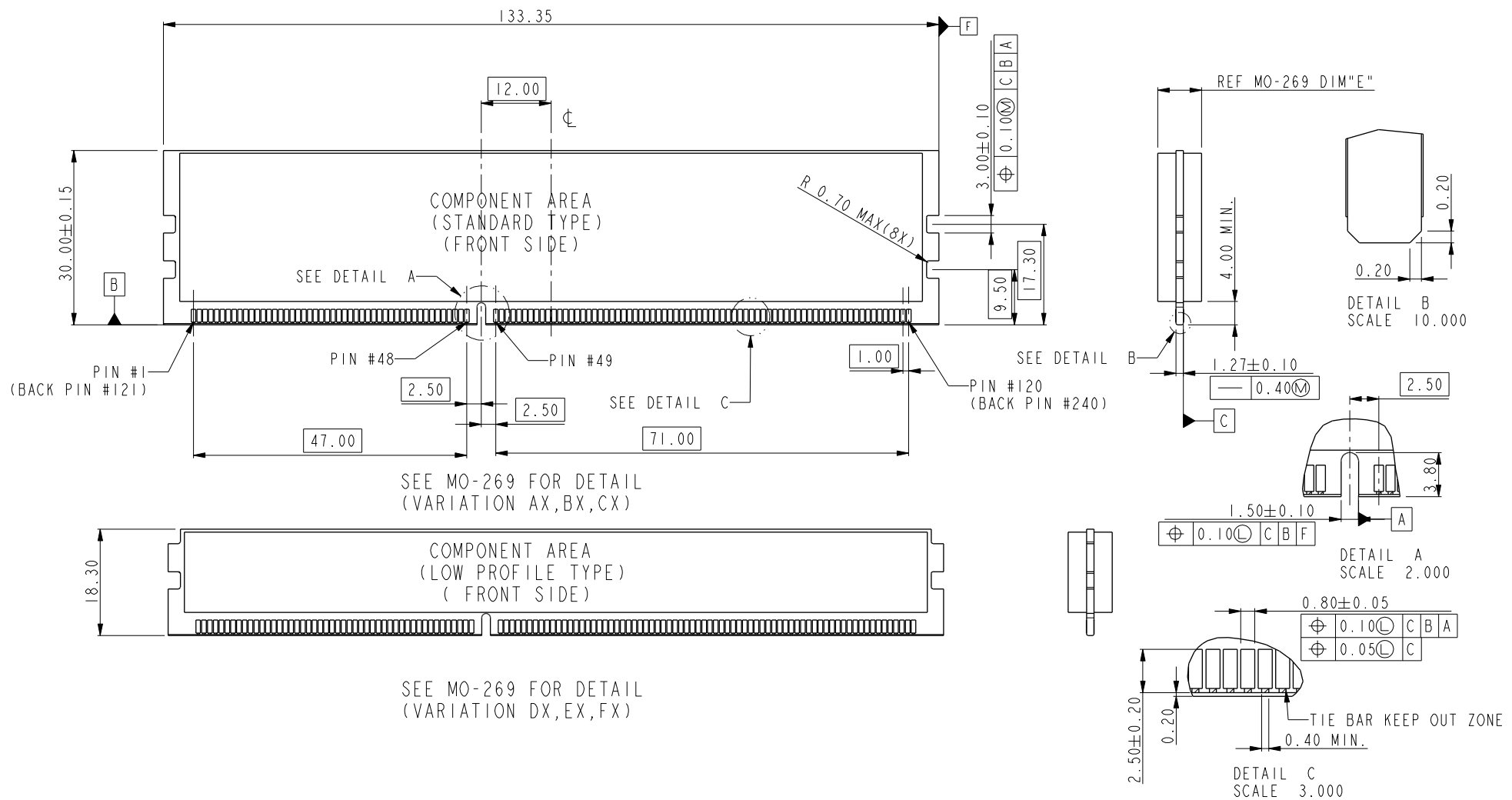


spec ref *		dr Rick Bian		2010/07/03		projection		size A4		scale 0.500			
tolerance std ASME Y14.5		eng Eric Jiang		2015/06/17				mm		ecn no ELX-DG-21184-1			
TOLERANCES UNLESS OTHERWISE SPECIFIED		chr Nickor Zuo		2015/06/24				rel level Released					
ASME Y14.5		appr Pei-Ming Zheng		2015/06/24		product family		10079248		rev X			
surface ✓		linear		0.X ±0.30				www.fci.com		SMT DDRIII SOCKET ASS'Y DDRIII, 240P SOCKET (FOR RDIMM MODULE)		cat. no. * Product - Customer Drw	
ASME Y14.5		linear		0.XX ±0.15									
ASME Y14.5		angular		0° ±2°									

PreV File - REV C - 2009-06-09



Copyright FCI.

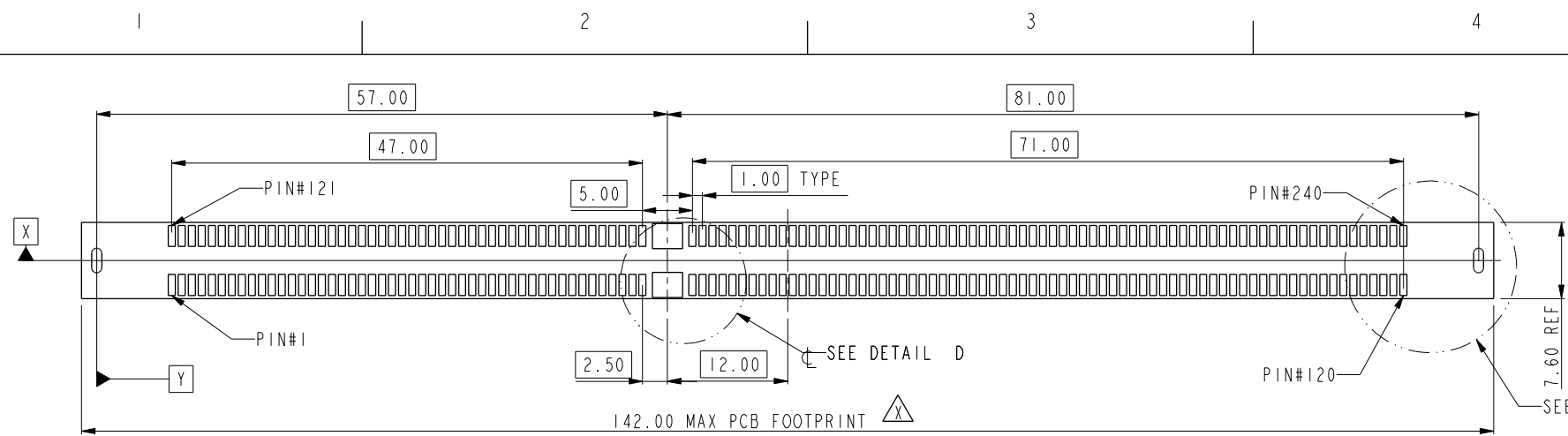


spec ref		*		dr	Rick Bian	2010/07/03	projection 	mm ←→	size	A4	scale	0.500
tolerance std		TOLERANCES UNLESS OTHERWISE SPECIFIED		eng	Eric Jiang	2015/06/17			ecn no	ELX-DG-21184-1		
ASME Y14.5				chr	Nickor Zuo	2015/06/24				rel level		Released
surface		linear		appr	Pei-Ming Zheng	2015/06/24	product family		rev			
ASME Y14.5		angular		www.fci.com		title		SMT DDRIII SOCKET ASS'Y		10079248		
		0.X ±0.30		cat. no.		* Product - Customer Drw		sheet 2 of 5		X		
		0.XX ±0.15										
		0.XXX ±0.05										
		0° ±2°										

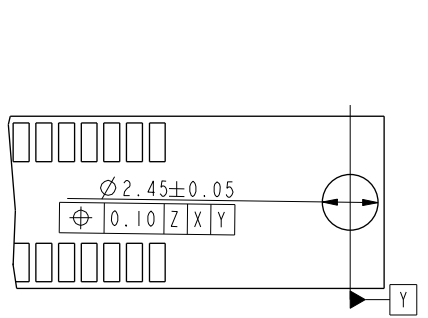
Pre/E File - REV C - 2009-06-09



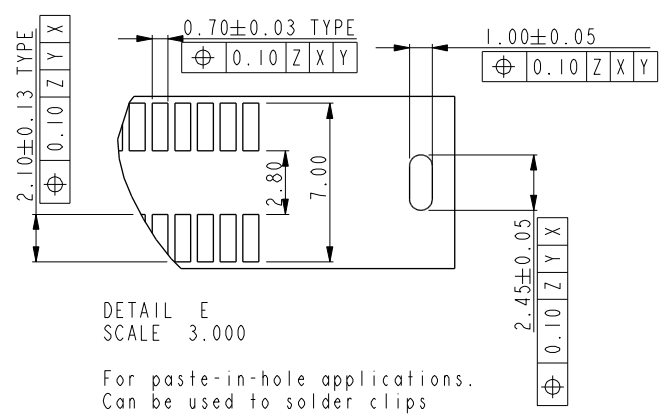
Copyright FCI.



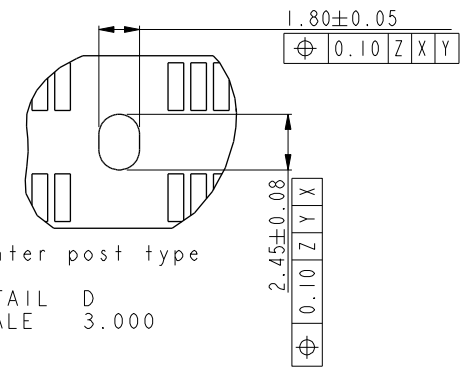
RECOMMEND CIRCUIT BOARD LAYOUT



DETAIL E
SCALE 3.000
Standard hole for hold-down clips



DETAIL E
SCALE 3.000
For paste-in-hole applications.
Can be used to solder clips during reflow operation.



Center post type
DETAIL D
SCALE 3.000

spec ref *		dr Rick Bian		2010/07/03		projection		size A4		scale 0.500		
tolerance std		eng Eric Jiang		2015/06/17				mm		ecn no ELX-DG-21184-1		
ASME Y14.5		chr Nickor Zuo		2015/06/24								
TOLERANCES UNLESS OTHERWISE SPECIFIED		appr Pei-Ming Zheng		2015/06/24		product family		rel level Released				
surface ✓	ASME Y14.5	linear	0.X	±0.30		title	SMT DDRIII SOCKET ASS'Y		dwg no	10079248		rev
			0.XX	±0.15								
			0.XXX	±0.05								
angular	0°	±2°	www.fci.com	cat. no.	*	Product - Customer Drw		sheet 3 of 5		X		

ProjE File - REV C - 2009-06-09



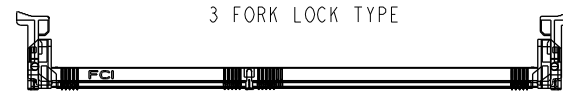
SCALE 0.500

10079248-10***
CENTER SMT HOLDOWN TYPE



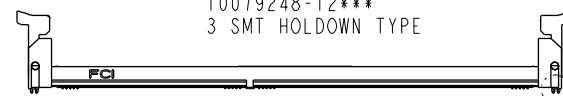
SCALE 0.500

10079248-11***
3 FORK LOCK TYPE



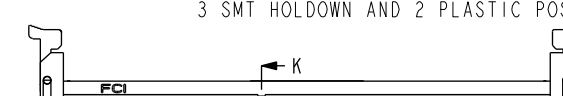
SCALE 0.500

10079248-12***
3 SMT HOLDOWN TYPE



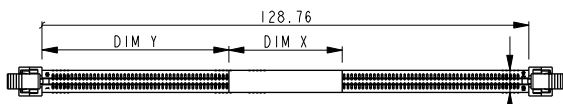
SCALE 0.500

10079248-13***
3 SMT HOLDOWN AND 2 PLASTIC POST TYPE



SCALE 0.500

10079248-15***
3 PLASTIC POST TYPE



SCALE 0.500
WITH MYLAR TAPE (OPTIONAL)

10079248 - □ □ □ □

STYLE : MECHANICAL KEYING

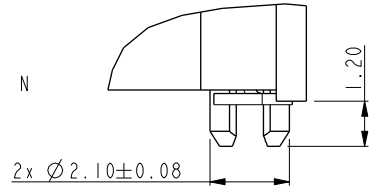
1 : 1.5 VOLT. W/ CENTER KEY

HOLD DOWN TYPE

- 0 : CENTER HOLD DOWN, FORKLOCK AT BOTH END
- 1 : 3 FORKLOCK TYPE
- 2 : 3 SMT HOLDOWN TYPE
- 3 : 3 SMT HOLDOWN AND 2 PLASTIC POST
- 5 : 3 PLASTIC POST TYPE

PACKAGE AND MYLAR OPTION

- ~~0 : SOFT TRAY WITHOUT MYLAR (OBSOLETE)~~
- 1 : HARD TRAY WITH MYLAR 1
- 2 : HARD TRAY WITHOUT MYLAR
- ~~3 : SOFT TRAY WITH MYLAR 1 (OBSOLETE)~~
- 4 : SPECIAL HARD TRAY WITH MYLAR 1
- 5 : SPECIAL HARD TRAY WITHOUT MYLAR
- 6 : HARD TRAY WITH MYLAR 2
- 7 : HARD TRAY WITH MYLAR 3
- 8 : HARD TRAY WITH MYLAR 4
- 9 : SMALLER HARD TRAY WITHOUT MYLAR



DETAIL N
SCALE 5.000

MYLAR TYPE	DIM X	DIM Y
MYLAR 1	30.0	49.38
MYLAR 2	90.0	19.38
MYLAR 3	30.0	30.0
MYLAR 4	30.0	68.8

PLATING

CODE	CONTACT	SOLDERTAIL	UNDERPLATE	NOTE
1	10u" (0.25um) MIN. GOLD	100u" (2.54um) MIN. TIN-LEAD	50u" (1.27um) MIN. NICKEL OVERALL	CONTACT NON-LUBRICANT
2	15u" (0.38um) MIN. GOLD			
3	30u" (0.76um) MIN. GOLD			
4	GOLD FLASH			
5	10u" (0.25um) MIN. GOLD			CONTACT LUBRICATED
6	15u" (0.38um) MIN. GOLD			
7	30u" (0.76um) MIN. GOLD			
8	GOLD FLASH			
3S	5u" (0.125um) MIN. GOLD			CONTACT LUBRICATED WITH HIGH PERFORMANCE POLY A-OLEFIN LUBRICANT
1LF	10u" (0.25um) MIN. GOLD	100u" (2.54um) MIN. 100% MATT TIN	50u" (1.27um) MIN. NICKEL OVERALL	CONTACT NON-LUBRICANT
2LF	15u" (0.38um) MIN. GOLD			
3LF	30u" (0.76um) MIN. GOLD			
4LF	GOLD FLASH			
5LF	10u" (0.25um) MIN. GOLD			CONTACT LUBRICATED
6LF	15u" (0.38um) MIN. GOLD			
7LF	30u" (0.76um) MIN. GOLD			
8LF	GOLD FLASH			
3SLF	5u" (0.125um) MIN. GOLD			CONTACT LUBRICATED WITH HIGH PERFORMANCE POLY A-OLEFIN LUBRICANT
7SLF	30u" (0.76um) MIN. GOLD			

COLOR OF HOUSING AND EJECTOR

- 0 : BLACK HOUSING + IVORY EJECTOR
- 1 : BLACK HOUSING + BLACK EJECTOR
- 2 : BLACK HOUSING + BLUE(661C) EJECTOR
- 3 : BLACK HOUSING + YELLOW(123C) EJECTOR

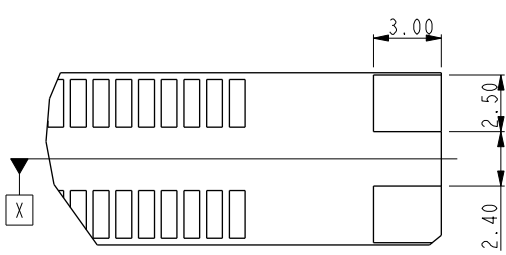


Copyright FCI.

spec ref	*	dr	Rick Bian	2010/07/03	projection	mm	size	A4	scale	0.500				
tolerance std	TOLERANCES UNLESS OTHERWISE SPECIFIED	eng	Eric Jiang	2015/06/17			← →	ecn no	ELX-DG-21184-1					
ASME Y14.5		chr	Nickor Zuo	2015/06/24					rel level	Released				
ASME Y14.5		appr	Pei-Ming Zheng	2015/06/24		product family								
surface	✓	linear	0.X	±0.30		title	SMT DDRIII SOCKET ASS'Y			dwg no	10079248	rev	X	
ASME Y14.5			0.XX	±0.15			cat. no.	*	Product - Customer Drw					sheet 4 of 5
			0.XXX	±0.05										
ASME Y14.5	angular	0°	±2°	www.fci.com										

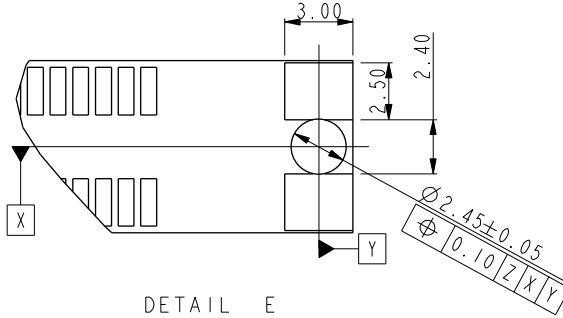


Copyright FCI.



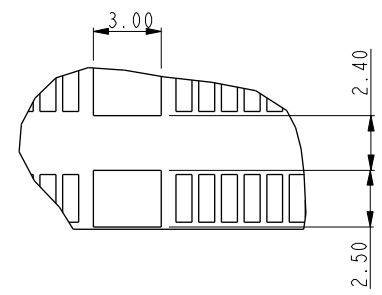
DETAIL E
SCALE 3.000

For smt holddown type



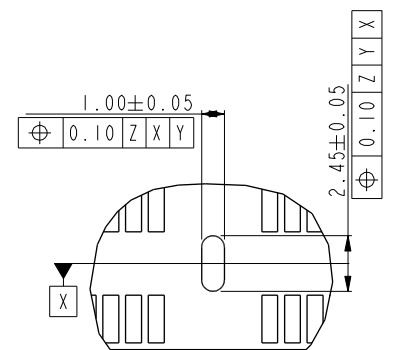
DETAIL E
SCALE 3.000

For 3smt holddown + 2plastic post type



Center smt holddown type

DETAIL D
SCALE 3.000

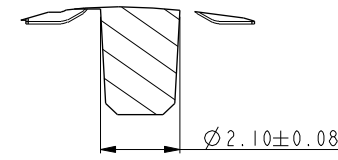


Center forklock type

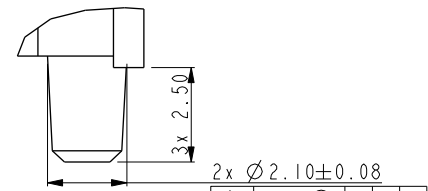
DETAIL D
SCALE 3.000

NOTES:

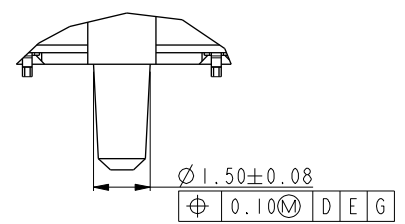
- MATERIAL:
HOUSING: HIGH PERFORMANCE RESINS, GLASS FILLED UL94V-0 RATED.
EJECTOR: HIGH PERFORMANCE RESINS, GLASS FILLED UL94V-0 RATED.
TERMINAL: HIGH PERFORMANCE COPPER ALLOY
METAL CLIP: COPPER ALLOY.
- FCI LOGO TO BE APPROXIMATELY LOCATED AS SHOWN ON PRINT.
- PRODUCT SPECIFICATION: GS-12-486.
- PACKAGING SPECIFICATION: GS-14-899.
- RECOMMENDED STENCIL THICKNESS NO LESS THAN 0.15 mm.
- FOR OPTIMUM PERFORMANCE. THE TIE BAR IS TO BE ON AN INTERNAL LAYER SO THAT THE REMNANT CANNOT CAUSE CONTACT DAMAGE.
- THE DATE CODE IS SHOWN "MMDDYY*": "*" MEANS PRODUCTION LINE.
- THIS PRODUCT MEETS EUROPEAN UNION DIRECTIVES AND OTHER COUNTRY REGULATIONS AS DESCRIBED IN GS-22-008.
- THE HOUSING WILL WITH STAND EXPOSURE TO 260°C PEAK TEMPERATURE FOR 10 SECONDS IN AN IR REFLOW SOLDERING APPLICATION.
- PRODUCT APPLICATION SPEC GS-20-089.
- THE HOLDLOCK TYPES ARE OPTION FOR HOLDOWN OR FORKLOCK.
- A Δ SYMBOL WILL BE NEXT TO ANY DIMENSION, VIEW, OR NOTE WHICH HAS BEEN MODIFIED WITH THE CURRENT DRAWING REVISION.



SECTION K-K
SCALE 5.000



DETAIL M
SCALE 5.000



DETAIL J
SCALE 5.000

spec ref		*		dr	Rick Bian	2010/07/03	projection 	mm ←→	size	A4	scale	0.500	
tolerance std		TOLERANCES UNLESS OTHERWISE SPECIFIED		eng	Eric Jiang	2015/06/17			ecn no	ELX-DG-21184-1			
ASME Y14.5				chr	Nickor Zuo	2015/06/24				rel level		Released	
surface		linear		appr	Pei-Ming Zheng	2015/06/24			product family				
ASME Y14.5		angular		www.fci.com		title		SMT DDRIII SOCKET ASS'Y		dwg no		10079248	
		0.X ±0.30						cat. no.		*		Product - Customer Drw	
		0.XX ±0.15										sheet 5 of 5	
		0.XXX ±0.05										rev	X
		0° ±2°											

ProjE File - REV C - 2009-06-09

Mouser Electronics

Authorized Distributor

Click to View Pricing, Inventory, Delivery & Lifecycle Information:

FCI / Amphenol:

[10079248-11002LF](#) [10079248-11016LF](#) [10079248-12006LF](#) [10079248-12016LF](#) [10079248-13006LF](#) [10079248-13016LF](#) [10079248-10007LF](#) [10079248-15103LF](#) [10079248-10002LF](#) [10079248-10003LF](#) [10079248-10006LF](#) [10079248-10012LF](#) [10079248-11006LF](#) [10079248-11017LF](#) [10079248-12002LF](#) [10079248-12003LF](#) [10079248-13002LF](#) [10079248-15002LF](#) [10079248-12103LF](#) [10079248-11223LF](#) [10079248-10102LF](#) [10079248-10503LF](#) [10079248-15113LF](#) [10079248-10003](#) [10079248-10103LF](#) [10079248-11113LF](#) [10079248-11003LF](#) [10079248-15102LF](#) [10079248-11007LF](#) [10079248-15112LF](#) [10079248-11137LF](#) [10079248-15107LF](#) [10079248-11104LF](#) [10079248-13107LF](#) [10079248-11103LF](#) [10079248-11127LF](#) [10079248-15106LF](#) [10079248-15117LF](#) [10079248-10016LF](#) [10079248-11117LF](#) [10079248-10117LF](#) [10079248-11122LF](#) [10079248-11123LF](#) [10079248-11102LF](#) [10079248-11013LF](#) [10079248-10202LF](#) [10079248-10107LF](#) [10079248-13117LF](#) [10079248-11213LF](#) [10079248-10007](#) [10079248-13036LF](#) [10079248-11233LF](#) [10079248-11107LF](#) [10079248-12123LF](#) [10079248-10513LF](#) [10079248-11203LF](#) [10079248-11133LF](#) [10079248-11108LF](#) [10079248-15122LF](#) [10079248-15003LF](#) [10079248-11217LF](#) [10079248-15227LF](#) [10079248-11103SLF](#) [10079248-12107LF](#) [10079248-11226LF](#) [10079248-11216LF](#) [10079248-15217LF](#) [10079248-11227LF](#) [10079248-11222LF](#) [10079248-11202LF](#) [10079248-13203LF](#) [1007924815103L](#) [1007924815003L](#) [10079248-15222LF](#) [10079248-13303LF](#) [10079248-11117SLF](#) [10079248-11207LF](#) [10079248-10216LF](#) [10079248-13207LF](#) [10079248-13206LF](#) [10079248-10206LF](#) [10079248-12203LF](#) [10079248-12216LF](#) [10079248-12102LF](#) [10079248-11926LF](#) [10079248-11127SLF](#) [10079248-11107SLF](#) [10079248-15211LF](#) [10079248-11206LF](#) [10079248-13216LF](#) [10079248-10203](#) [10079248-13127LF](#) [10079248-12202LF](#) [10079248-15622LF](#) [10079248-15226LF](#) [10079248-15011LF](#) [10079248-13202LF](#) [10079248-10207](#) [10079248-15203LF](#) [10079248-15201LF](#)