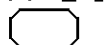
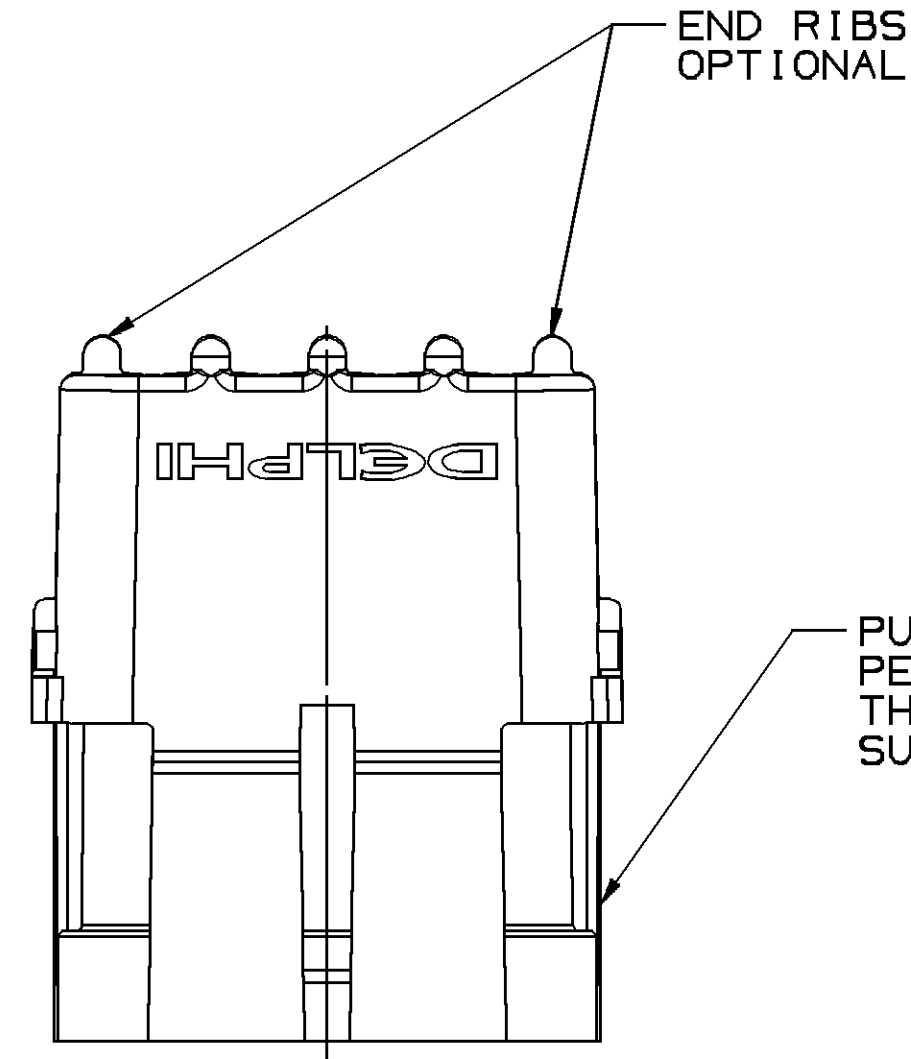


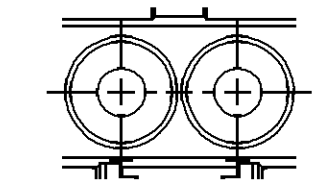
| SYMBOL DEFINITION   |                                  |    |
|---|----------------------------------|----|
| A DIMENSION WITHOUT AN INSPECTION REPORT SYMBOL  DOES NOT REQUIRE INSPECTION. IT MAY BE CONTROLLED ON THE INDIVIDUAL COMPONENT DRAWING. | TOTAL NO OF INSPECTIONS REQUIRED | 15 |
|   | LAST NO. USED                    | 11 |

| MISSING SYMBOLS          |
|--------------------------|
| NO MISSING SYMBOL NUMBER |

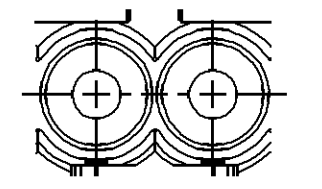
| DWG STATUS |     |     |     |     | ZONE | REVISION HISTORY                                       |  | AUTH   | DR  | APVD1 | APVD2 |
|------------|-----|-----|-----|-----|------|--|--|--------|-----|-------|-------|
| DATE       | STG | REV | N/P | CHG |      |  |  |        |     |       |       |
| 10JL08     | R   | E4  | -   | -   |      | CLEARED REV COL., REDRAWN TO PD, UPDATED MAT'L CALLOUT |  | 405394 | JSM | SCR   | AEC   |
| 24JL09     | R   | E5  | -   | -   |      | 36.1 +0.15/-0.2 WAS 36.1 +/-0.15 AND REVISED NOTE 3    |  | 408458 | EFJ | GLG   | APR   |



PULL OUT RIBS PERMITTED ALONG THIS AND OPPOSITE SURFACE

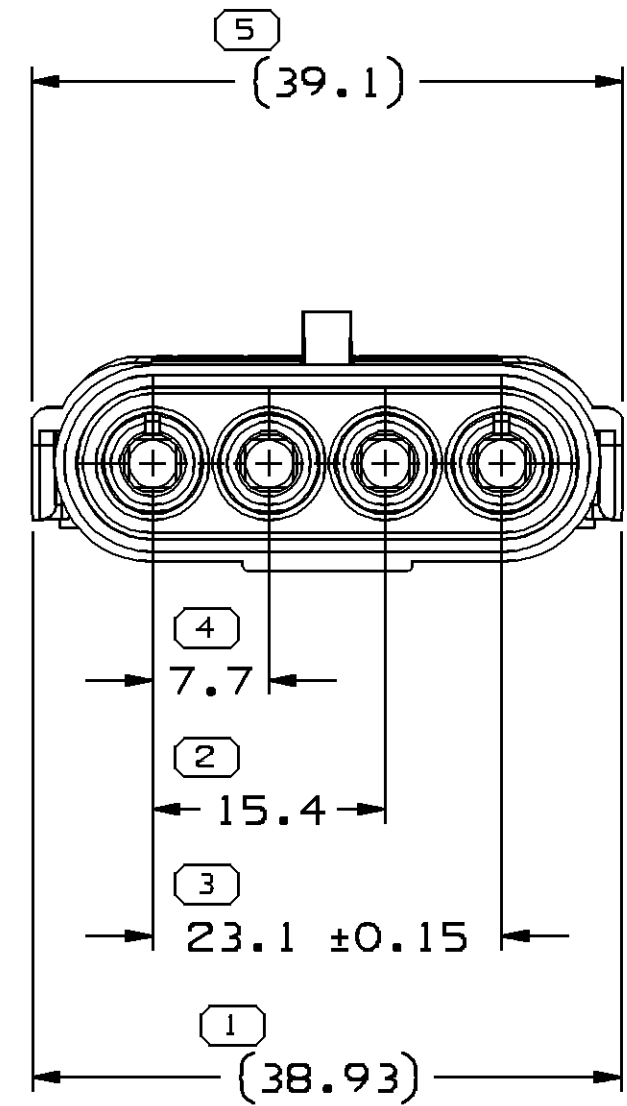
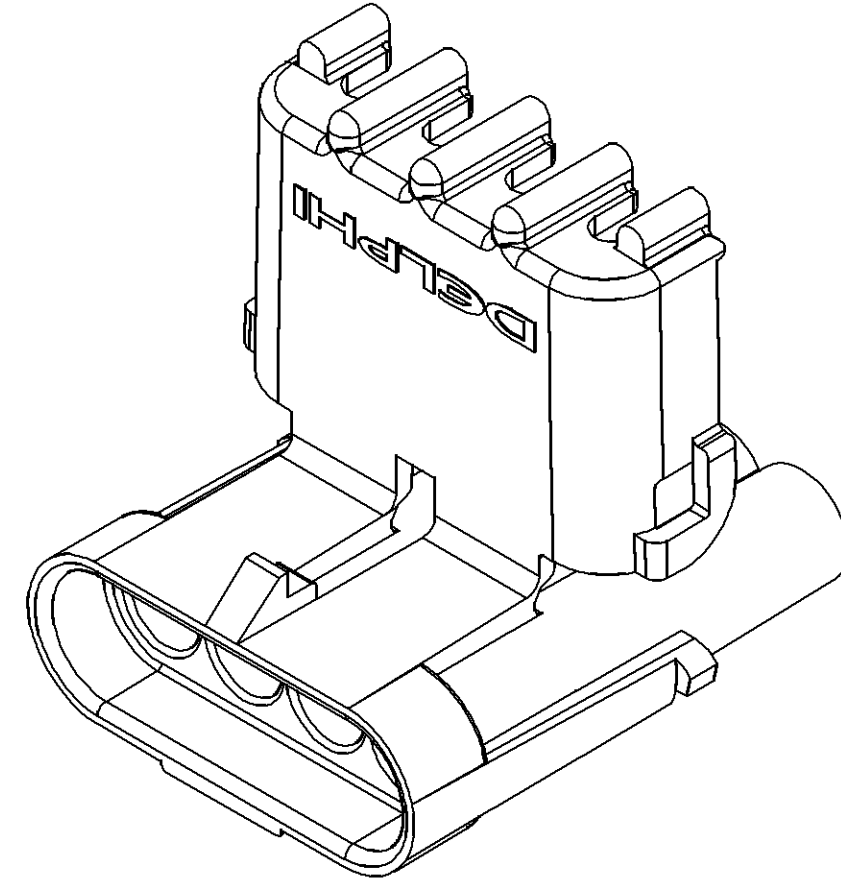


STANDARD CONSTRUCTION

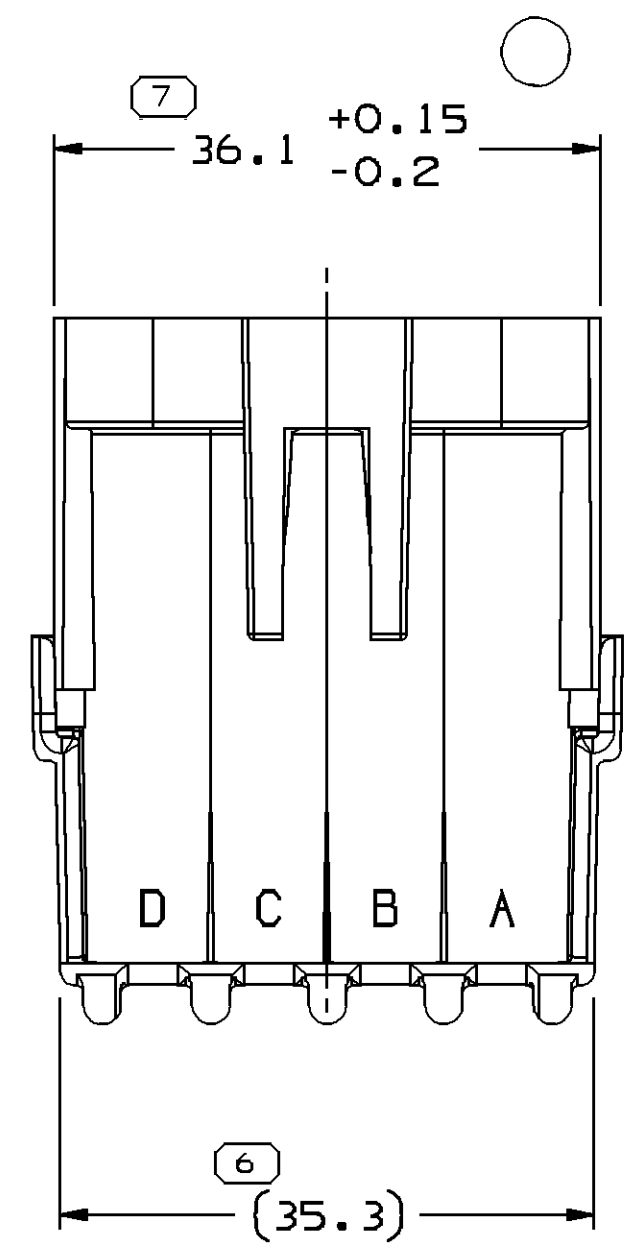
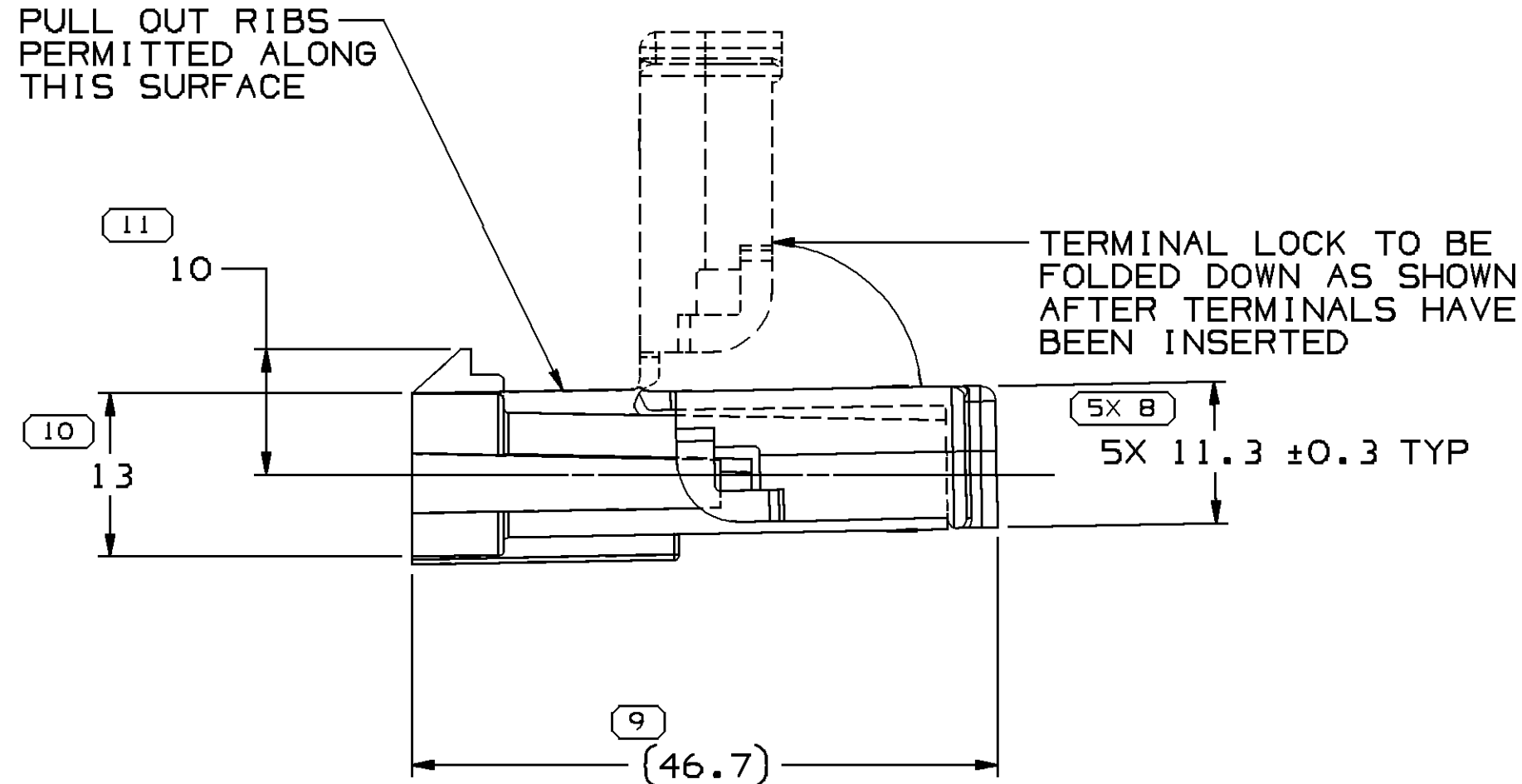


OPTIONAL CONSTRUCTION

CABLE END VIEW OF CONN BODY

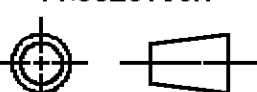
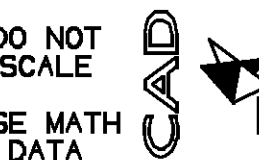


INDEX CODE -1001- (ALSO SEE HANDBOOK)



- NOTES
- UNLESS OTHERWISE SPECIFIED AND/OR INDICATED:  
DIMENSIONS ARE TO FACE OF VIEW SHOWN AND AUTOMATICALLY ROUNDED BY COMPUTER FOR INSPECTION (SEE MATH MODEL FOR PRECISE DIMENSIONS). FOR ALL OTHER DIMENSIONS NOT SHOWN BUT REQUIRED FOR TOOL BUILD, SEE MATH MODEL FOR PRECISE TOOL PATH DATA.
  - MATERIAL RECYCLING CODE PER ISO 11469. (2.3)X(0.1) CHARACTERS AS SHOWN TO BE LOCATED ON ANY EXTERIOR SURFACE. OPTIONAL CONSTRUCTION TO BE NO MATERIAL RECYCLE CODE.
  - THIS PRODUCT IS NOT CATEGORIZED AS AN APPEARANCE ITEM, MINOR IMPERFECTIONS INCLUDING, BUT NOT LIMITED TO, FLOW MARKS, COLOR BLEMISHES, GATE VESTIGE, AND SOFT FLASH THAT DO NOT AFFECT THE FIT, FORM, OR FUNCTION OF THE PART ARE PERMISSIBLE PER DPNP-4.7-CS-01.
  - (2.3)X(0.1) DELPHI CORPORATE BRAND TO BE LOCATED ON ANY EXTERIOR SURFACE, PREFERABLY VISIBLE AT FINAL ASSEMBLY. OPTIONAL CONSTRUCTION FOR EXISTING TOOLING MAY BE "PED". OR NO LOGO.
  - FOR APPLICATION DATA SEE THE APPLICATION DRAWING.
  - SEALING CODE 3.
  - CAUTION: DO NOT ATTEMPT TO COPY THIS DRAWING WHEN DESIGNING A MATING PART TO A WEATHER PACK CONNECTOR. PLEASE REQUEST THE LATEST COPY OF DRAWING NUMBER 12020084 FROM THE PACKARD ELECTRIC DIVISION.

| DIMENSIONAL RANGE (MM)  |     |      |      |      |       |       |       |       |       |       |          |
|---|-----|------|------|------|-------|-------|-------|-------|-------|-------|----------|
| FROM  | > 0 | > 20 | > 30 | > 70 | > 100 | > 150 | > 200 | > 250 | > 300 | > 400 | CHART ET |
| TO  | 20  | 30   | 70   | 100  | 150   | 200   | 250   | 300   | 400   |       |          |
| TOLERANCE UNLESS OTHERWISE SPECIFIED                          |     |      |      |      |       |       |       |       |       |       |          |
| [±0.15] [±0.2] [±0.3] [±0.4] [±0.5] [±0.6] [±0.8] [±1] [±1.2] |     |      |      |      |       |       |       |       |       |       |          |
| ANGULAR TOLERANCE ±2°   |     |      |      |      |       |       |       |       |       |       |          |

| DWG TYPE   |   |
|--|---|
| PART DRAWING   |   |
| STYLE  |   |
| VOLUME (CM <sup>3</sup> )  | DISTR CODE  |
| 9.094  | D   |
| UNLESS OTHERWISE SPECIFIED<br>THIS DOCUMENT IS IN ACCORDANCE WITH ASME Y14.5M-1994 AS AMENDED BY THE 2001 GLOBAL DIMENSIONING AND TOLERANCING ADDENDUM-2001. SEPARATE PATTERNS OF FEATURES MAY BE GAGED SEPARATELY REGARDLESS OF DATUM REFERENCES. |   |
| ALL DIMENSIONS ARE IN MILLIMETERS  |   |
| REFERENCE  |   |
| THIRD ANGLE PROJECTION   | DO NOT SCALE  |
|   |  |
| USE MATH DATA  |   |

| DELPHI  |          |
|---|----------|
| DELPHI PACKARD ELECTRICAL/ELECTRONIC ARCHITECTURE<br>WARREN, OH |          |
| DR  | DATE     |
| J.E. THIESS JR.   | 09JL81   |
| APVD1 T. MUDREY   | 15JL81   |
| APVD2 F. RIDER  | 04MR80   |
| APVD3 A. WINYARD  | 04MR80   |
| APVD4   |          |
| APVD5   |          |
| SUBSTANCES OF CONCERN AND RECYCLED CONTENT PER DELPHI 10949001  |          |
| MATERIAL POLYAMIDE COMPOUND BLACK                               |          |
| DRAWING NAME  |          |
| CONN 4 M W/P SHD SLD  |          |
| DRAWING NUMBER  |          |
| 12010974  |          |
| SIZE  | SCALE    |
| A1  | 2:1      |
| FRAME NO  | SHEET NO |
| 1 OF 1  | 1 OF 1   |
| STG   | REV      |
| R   | E5       |
| N/P   | -        |

# Mouser Electronics

Authorized Distributor

Click to View Pricing, Inventory, Delivery & Lifecycle Information:

[Delphi Connection Systems:](#)

[12010974](#)