

Indicator



PSE M16 AE PI Indicator



Description

- The indicators are available with Lettering, Point Illumination Ring Illumination or Area Illumination
- Can be combined with the available piezo switch variants
- Pins, Wire, Crimp Terminal male or Cable with Faston

Characteristics

- High reliability, long lifetime
- Variety of design options regarding size, colour, material and connections
- For use in harsh environments, both indoors and outdoors

References

Alternative: switch normal operation: [PSE NO 16](#)

Weblinks

[html-datasheet](#), [General Product Information](#), [CE declaration of conformity](#), [RoHS](#), [CHINA-RoHS](#), [e-Shop](#), [CAD-Drawings](#), [Product News](#), [Detailed request for product](#)

Technical Data

Electrical Data

ESD-protection-class	8 kV Class 3B
Supply Voltage	Point Illumination without series resistor

Mechanical Data

Tightening Torque	2.5 Nm
Shock Protection	IK 08, IK 02

Climatical Data

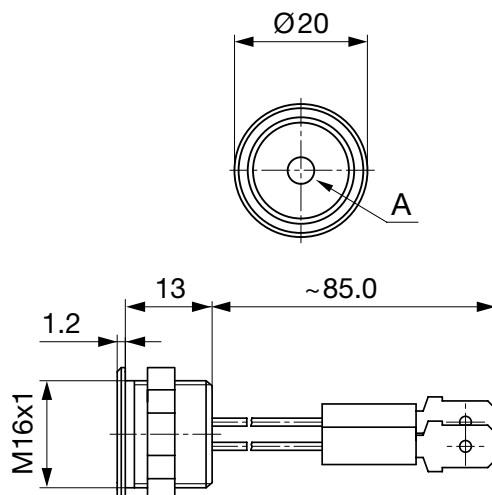
Operating Temperature	min. -40 to +85 °C
Storage Temperature	min. -40 to +85 °C
IP-Protection	IP 67 , Front Side submerged (1m water column), front side / rear side DIN EN 60068-2-30 Db (Moist heat - air test with 55°C / 93% humidity)
Salt Spray Test (acc. to DIN 50021-SS)	24 h / 48 h / 96 h Residence Time

Material

Housing	Aluminium anodized
Gasket	NBR70
Nut	Steel galvanized

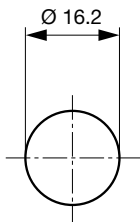
Dimension

PSE AE M16 PI



Dimension

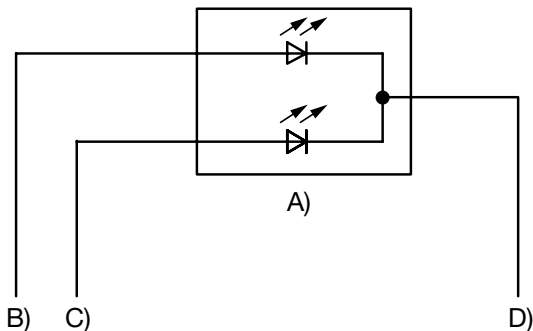
PSE M16



Drilling diagram

Diagrams

PSE AE PI



- A) Double-LED (2 colors, 3 pins) or simple LED (2 pins)
B) Cable 1 (color 1 of the LED), Supply voltage
C) Cable 2 (color 2 of the LED), Supply voltage
D) Cable 3 (black), Mass

Point Illumination

Operating Data	Forward Current max.	Forward Voltage at 10 mA	Forward Voltage max.
LED red	25 mA	2.1 VDC	2.5 VDC
LED green	25 mA	2.05 VDC	2.5 VDC
LED yellow	30 mA	2.0 VDC	2.5 VDC
Attention: Point illuminated Indicators are delivered without series resistor.			

All Variants

Mounting Diameter [mm]	Terminal	Housing Material, Torsion Protection	Colour of Housing	Surface Finish	Shock Protection	Illumination, LED	Config. Code	Order Number
16	Quick connect terminal	Aluminium anodized ,no	Alu natural	F	IK 08	Point Illumination, red	PSE M 16 AE RU	1241.3033.M
16	Quick connect terminal	Aluminium anodized ,no	red	F	IK 08	Point Illumination, red	PSE M 16 AE RU	1241.3036.M
16	Quick connect terminal	Aluminium anodized ,no	Alu natural	F	IK 08	Point Illumination, green	PSE M 16 AE RU	1241.3034.M
16	Quick connect terminal	Aluminium anodized ,no	green	F	IK 08	Point Illumination, green	PSE M 16 AE RU	1241.3037.M
16	Quick connect terminal	Aluminium anodized ,no	Alu natural	F	IK 08	Point Illumination, yellow	PSE M 16 AE RU	1241.3035.M
16	Quick connect terminal	Aluminium anodized ,no	yellow	F	IK 08	Point Illumination, yellow	PSE M 16 AE RU	1241.3038.M

Legende:
Type: PSE
AE = Indicator
RU = PI = Point Illumination
RI = Ring Illumination
AI = Area Illumination
Alu = Aluminium
ES = Stainless steel
F = Finger guidance
E = without finger guidance

Plastic nut with gasket are enclosed in the box.

Other mounting diameters, materials, colors, connections, supply voltages possible available on request.
Special materials for use in salt and chlorinated environment on request.

Mounting Diameter [mm]	Terminal	Housing Material, Torsion Protection	Colour of Housing	Surface Finish	Shock Pro- tection	Illumination, LED	Config. Code	Order Number
------------------------------	----------	---	----------------------	-------------------	-----------------------	-------------------	--------------	--------------

Availability for all products can be searched real-time: <http://www.schurter.com/en/Stock-Check/Stock-Check-SCHURTER>

Packaging unit 10 pcs. PSE M16 AE / PSE M30 AE 20 pcs.



- Indicator elements in ESD safe packaging
- Screw nuts and sealing rings in a bag (enclosed in the box)