



# SERIES 1550 - SINGLE AND DOUBLE-POLE ROCKER SWITCHES

TO 16 (4) A 250 V AC



## PRODUCT FEATURES

- Inrush currents (capacitive) up to 100 A
- Two housing variants (with flange or lower lying)
- With mechanical forced opening
- Illuminated window with lens effect

## ON REQUEST



- Other colors
- Other rocker labelings
- Other lamp variants
- Conformity IEC 60065 chap. 14.6
- Special rockers
- Cable assembly

Mechanical life endurance	5E4
Inrush current (capacitive)	100 A
Contact distance	≥ 3 mm
Contact resistance (new condition)	< 100 mOhm (1 A 12 V DC)
Insulation resistance (new condition)	> 100 MOhm (500 V DC)
Proof tracking	250 PTI
Protection type	IP 40
Ambient temperature	terminal side -20 °C ... +100 °C actuating side -20 °C ... +55 °C
Flammability	UL 94 V-2 UL 94 V-0 (product-dependent)
Glow wire test temperature	850 °C
Material actuator housing	PA PA
Plug force of the terminals	≤ 80 N
Approval marks	
Suitable for appliances of protection class II	



# SERIES 1550 - SINGLE AND DOUBLE-POLE ROCKER SWITCHES

TO 16 (4) A 250 V AC

 single-pole 		Lighting voltage (V)	Actuator color / printing	Housing color	7 A 250 V AC 5E4	16 (4) A 250 V AC 5E4	16 (4) A 250 V AC 1E4	10 (4) A 250 V AC 5E4	10 (4) A 250 V AC 25E3	10 A 12 V DC	20 mA 250 V AC 5E4	20 A 250 V AC 2 HP	20 A 125 V AC 1 HP	16 A 250 V AC 2 HP	16 A 125 V AC 1 HP	Terminal type	Terminal description	Contact material	EN 60335 cap. 30 conform "G"	Miscellaneous	Stock version
<b>ON / OFF switch (SPST)</b>																					
1550.3102	230					○	○							○			6.3	Ag			
1550.3609	12								○								6.3	Ag		lower lying flange	
1551.3102						○	○							○	○		6.3	Ag	○		○
1551.3103						○	○							○	○		6.3	Ag			
1551.3106						○	○							○	○		6.3	Ag			
1551.2654										○								Au		approvals KEMA lower lying flange	
<b>Normally closed contact (SPNC)</b>																					
1581.1303					○									○	○		6.3	Ag	○	increased life endurance at a high electrical rating	
1551.1303						○	○							○	○		6.3	Ag			
<b>Normally open contact (SPNO)</b>																					
1551.3202						○	○							○	○		6.3	Ag			○
1551.3702						○	○							○	○		6.3	Ag		lower lying flange	

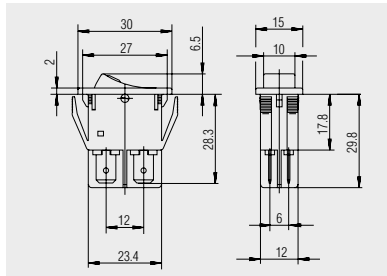
ROCKERSWITCHES  
 PUSHBUTTON SWITCHES  
 TOGGLE SWITCHES  
 SLIDE SWITCHES  
 ROTARY SWITCHES  
 FOOT SWITCHES  
 TACT AND KEY SWITCHES  
 SMP-ACTION SWITCHES  
 MICRO-SIGNAL SWITCHES  
 SENSORS  
 ECO  
 PUSH N' DRIVE





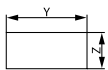
# SERIES 1550 - SINGLE AND DOUBLE-POLE ROCKER SWITCHES

TO 16 (4) A 250 V AC



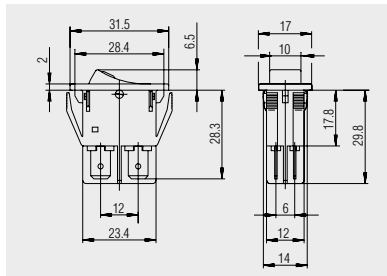
Basic types 1550 and 1555  
single and double-pole

Quick-connect terminal 6.3 x 0.8



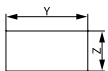
X = Wall thickness

x	y	z
0.8 ... 5.0	27.2 <sup>+0.1</sup>	12.2 <sup>+0.2</sup>



1555.8104  
double-pole

Quick-connect terminal 6.3 x 0.8  
cover frame 31.5 x 17 mm



X = Wall thickness

x	y	z
0.8 ... 5.0	28.6 <sup>+0.1</sup>	14 <sup>+0.2</sup>

ROCKER SWITCHES  
PUSHBUTTON SWITCHES  
TOGGLE SWITCHES  
SLIDE SWITCHES  
ROTARY SWITCHES  
FOOT SWITCHES  
TACT AND KEY SWITCHES  
SNAP-ACTION SWITCHES  
MICRO-SIGNAL SWITCHES  
SENSORS  
ECO  
PUSH N' DRIVE

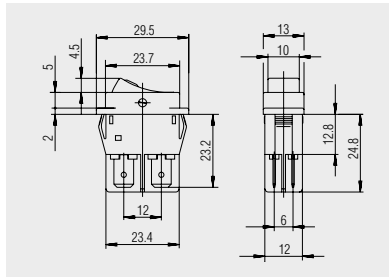


# SERIES 1550 - SINGLE AND DOUBLE-POLE ROCKER SWITCHES

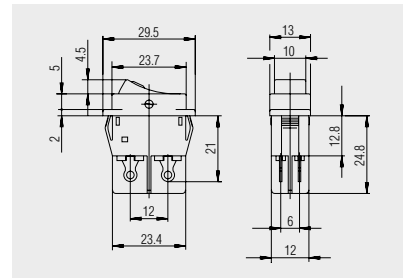
TO 16 (4) A 250 V AC



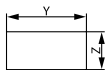
Basic types 1550 and 1555  
lower lying flange  
single and double-pole



Quick-connect terminal 6.3 x 0.8



Solder terminal

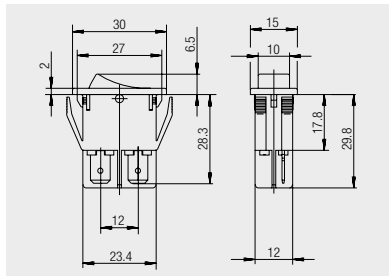


X = Wall thickness

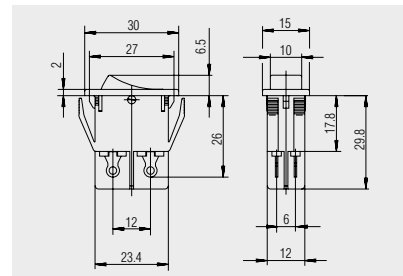
x	y	z
0.75 ... 1.25	26.2 <sup>-0.1</sup>	12.4 <sup>+0.1</sup>
2 ... 3	26.8 <sup>-0.1</sup>	12.4 <sup>+0.1</sup>
2 ... 3	26.8 <sup>-0.1</sup>	12.4 <sup>+0.1</sup>
1.25 ... 2	26.4 <sup>-0.1</sup>	12.4 <sup>+0.1</sup>



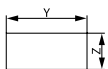
Basic type 1551 and 1552  
single and double-pole



Quick-connect terminal 6.3 x 0.8



Solder terminal



X = Wall thickness

x	y	z
0.8 ... 5.0	27.2 <sup>+0.1</sup>	12.2 <sup>+0.2</sup>

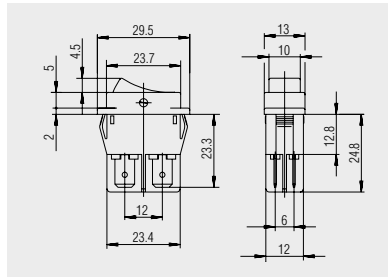


# SERIES 1550 - SINGLE AND DOUBLE-POLE ROCKER SWITCHES

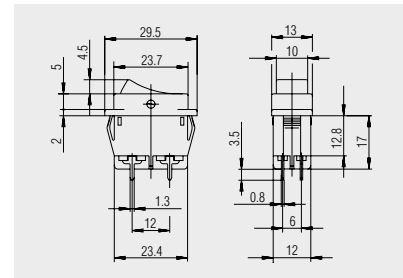
TO 16 (4) A 250 V AC



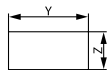
Basic types 1551 and 1552  
lower lying flange  
single and double-pole



Quick-connect terminal 6.3 x 0.8

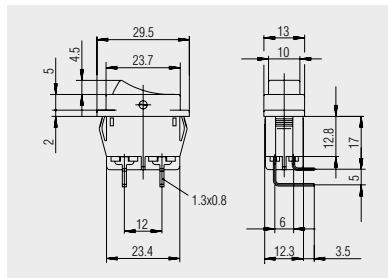


PCB terminal

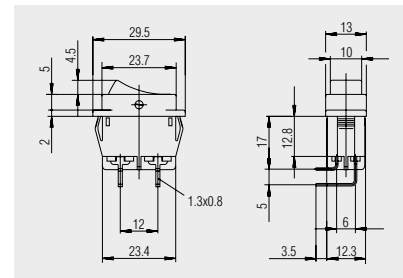


X = Wall thickness

x	y	z
0.75 ... 1.25	26.2 <sup>-0.1</sup>	12.4 <sup>+0.1</sup>
1.25 ... 2	26.4 <sup>-0.1</sup>	12.4 <sup>+0.1</sup>
2 ... 3	26.8 <sup>-0.1</sup>	12.4 <sup>+0.1</sup>



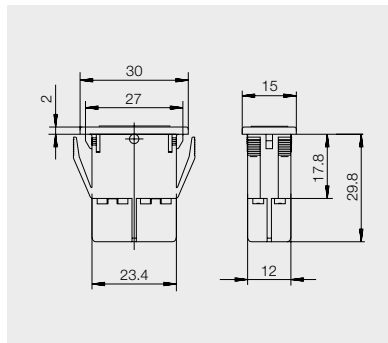
PCB terminal angled



PCB terminal angled mirror-inverted



Dummy piece  
203.103.013



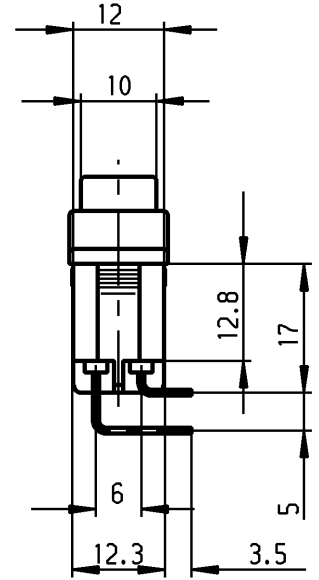
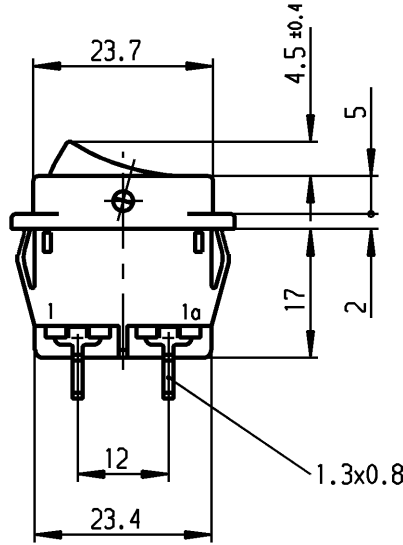
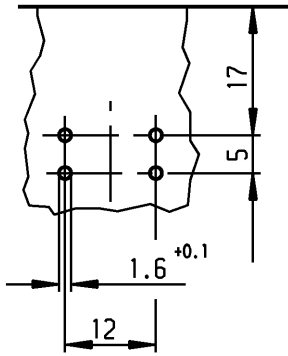
Dummy piece for series 1550 made of PA

ROCKER SWITCHES  
PUSHBUTTON SWITCHES  
TOGGLE SWITCHES  
SLIDE SWITCHES  
ROTARY SWITCHES  
FOOT SWITCHES  
TACT AND KEY SWITCHES  
SNAP-ACTION SWITCHES  
MICRO-SIGNAL SWITCHES  
SENSORS  
ECO  
PUSH 'N' DRIVE

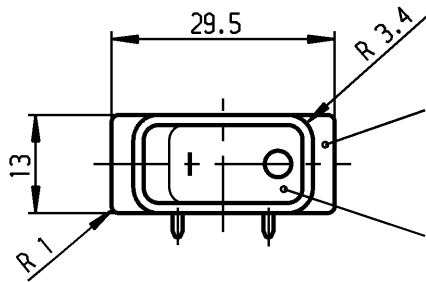
Empfohlenes Lochbild; Bauteilseite  
Toleranzen nach DIN IEC 326 sehr fein  
recommended terminal layout; side of component  
tolerances as per DIN IEC 326 item 3 very fine

Empfohlener Ausschnitt fuer Rastbefestigung (Grat gegenueber Bestueckungsseite)  
recommended cut-out for snap-in fixing (edge opposite to snap-in direction)

Wanddicke wall-thickness	Ausschnittlaenge length of cut-out	Ausschnittbreite width of cut-out
0.75 to / bis 1.25	26.2 -0.1	12.4 +0.1
1.25 to / bis 2	26.4 -0.1	12.4 +0.1
2 to / bis 3	26.8 -0.1	12.4 +0.1

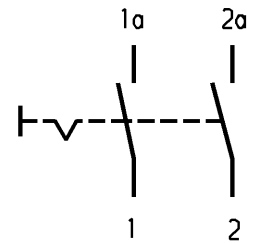


**VERTRAULICH - CONFIDENTIAL**  
Alle Rechte bei Marquardt, auch fuer den Fall von Schutzrechtsverletzungen. Jede Verfuugungsbefugnis, wie Kopier- und Weitergaberecht, bei uns.  
This document is the exclusive property of Marquardt. Without our consent, it may not be reproduced or given to third parties.



schwarz  
black

Wippe schwarz  
Zeichen weiß  
rocker black  
symbol white



Aufschrift  
Marking

(M)

- 155..
- 16(4)/250 ~
- 10(4)/250 ~ 5E4 T100/55 T100
- 5/100A 250V ~

05

16A 125-250V AC  
1 HP 125V AC  
2 HP 250V AC  
R38

Herstellort/-jahr/-woche  
nach DIN EN 60062  
code of manufacture:  
place/year/week acc. to DIN EN 60062

Ausschalter 2-polig

fuer Gerate der Klasse II geeignet

DPST

suitable for appliances of class II

Schutzvermerk  
nach DIN 34 beachten  
COPYRIGHT RESERVED

Für Form und Lage FOR SHAPE AND LOC.	Für Winkel FOR ANGLE	Allgemeintoleranzen UNTOLERANCED DIMENSIONS			Pause COPY	Blatt SHEET 01	Typ K	Zeichn./DRAWING NO. 1552.4606	Index
		PROJECTION	Abmasse und Nennmassbereiche Angaben in mm	Laengen LENGTH					
± 2°		ALL DIMENSIONS ARE IN MILLIMETRES	0-6 ± 0.2	± 0.2	Original DIN A4	Maßstab SCALE 1:1	Gerateschalter Appliance Switch		
			>6-15 ± 0.4	±					
c	22971	21.09.94 Mut	g		CAD Medusa		Z		
b	21323	24.03.92 Mut	f	69572	gez./DRAWN BY 05.09.89 ZF				
a	20394	10.10.90 ZF	e	35129	gepr./CHECKED BY Lr				
			d	23635	Ersatz für/REPLACEMENT OF				
Ausg. ISSUE	Anderung REVISION	gez. DRAWN BY	Ausg. ISSUE	Anderung REVISION	gez. DRAWN BY		MARQUARDT Marquardt, D-78604 Riethem-Weilheim		