

© 1969 BY AMP INCORPORATED. ALL RIGHTS RESERVED. AMP
 PROPERTIES COVERED BY PATENTS AND/OR PATENTS PENDING.

PART NO.	NO. OF POS.	A	B	C	D
583533-1	3				
2	4				
3	5				
4	6				
5	7				
6	8				
7	9				
8	10				
9	11				
1-583533-0	12				
1	13				
2	14				
3	15				
4	16				
5	17				
6	18				
7	19				
8	20				
9	21				
2-583533-0	22				
2	23				
3	24				
4	25				
5	26				
6	27				
7	28				
8	29				
9	30				
3-583533-0	31				
3	32				
4	33				
5	34				
6	35				
7	36				
8	37				
9	38				
4-583533-0	39				
4	40				
5	41				
6	42				
7	43				
8	44				
9	45				
5-583533-0	46				
5	47				
6	48				
7	49				
8	50				
9	51				
6-583533-0	52				
6	53				
7	54				
8	55				
9	56				
7-583533-0	57				
7	58				
8	59				
9	60				

OBSOLETE 6

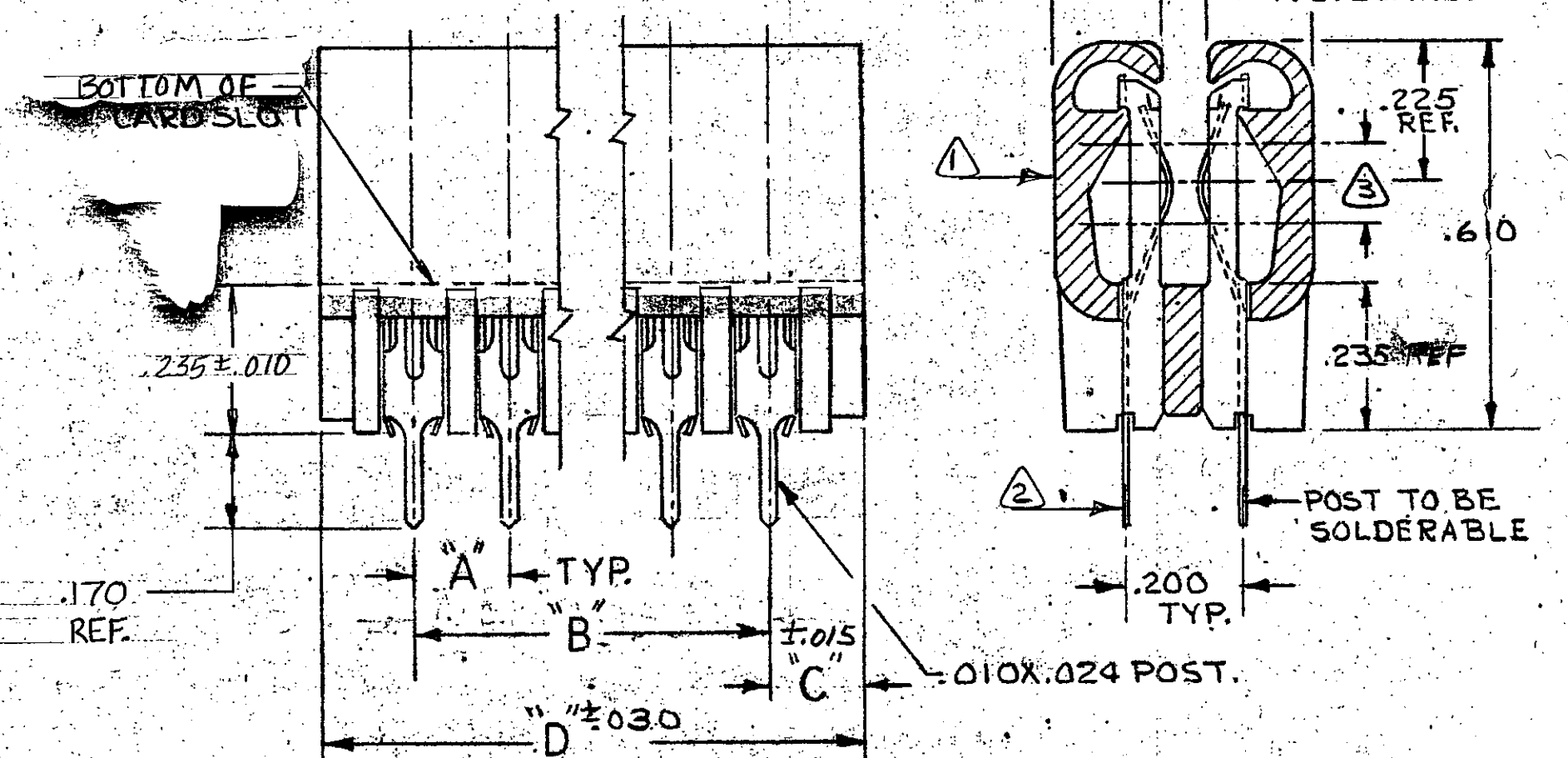
OBSOLETE 6

OBSOLETE 6

OBSOLETE

OBSOLETE 6

5



3. FINISH: .000015 GOLD. SELECTIVE.

4. SEE SHEET 2 FOR RECOMMENDED PRINTED CIRCUIT BOARD LAYOUT.

5. FINISH: .000030 GOLD SELECTIVE.

6. OBSOLETE PARTS: OBSOLETE CIS STREAMLINING PER D.RENAUD/D.SINISI

UNLESS OTHERWISE SPECIFIED, DIMENSIONS ARE IN INCHES TOLERANCES ON: DECIMALS ±.005 ANGLES ±.5		CONTRACT NO.		AMP INCORPORATED HARRISBURG, PENNSYLVANIA	
MATERIAL HOUSING: GLASS FILLED POLYESTER COLOR: BLACK CONTACT: PHOS. BRONZE		DR 1-29-73 CHK 2-5-73 APPD 2-5-73 REL 3/13/73 DSGN APPD OTHER APPD		NAME HOUSING ASS'Y, TWIN LEAF, 125 C, SOLDER TYPE POST, .010X.024	
		SIZE C		CODE IDENT NO. 00779	
		SCALE N		NUMBER 583533	
				SHEET 1 OF 2 SHTS.	

CUSTOMER DRAWING

NUMBER
CUST. 583533

B

A

D

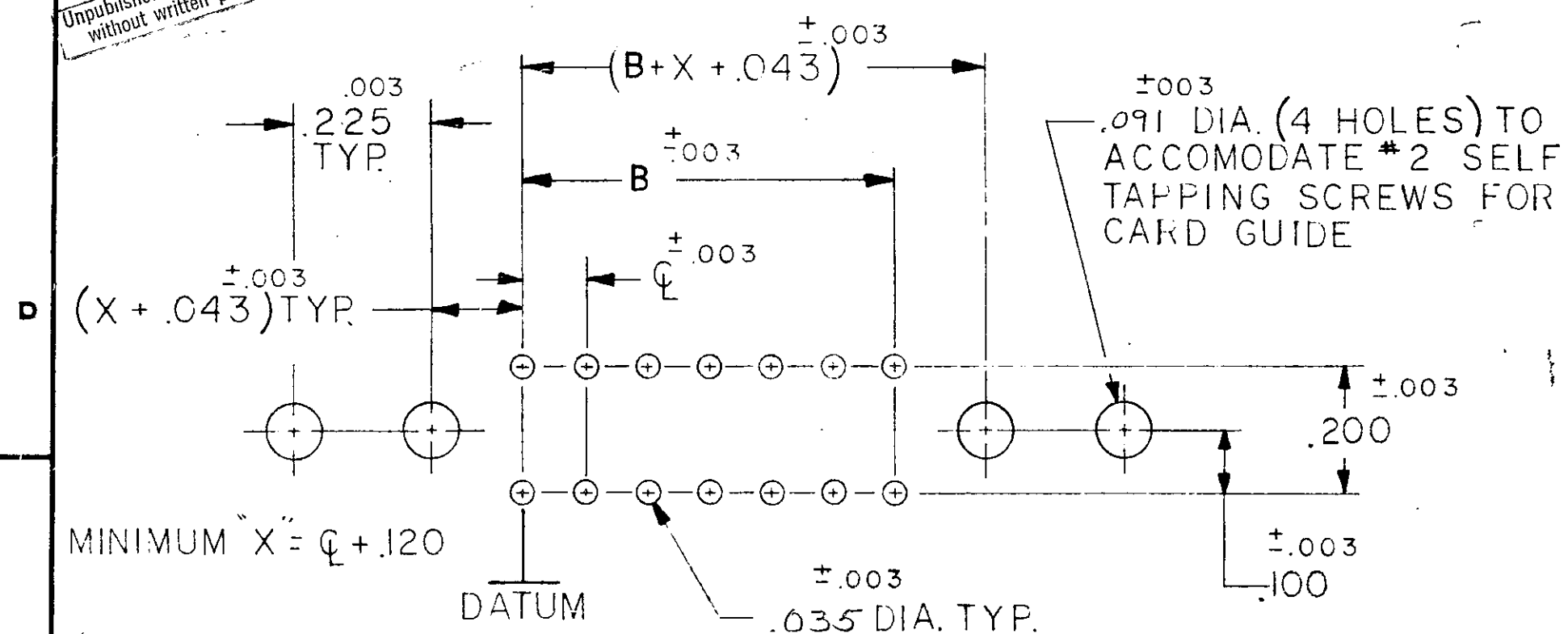
C

A

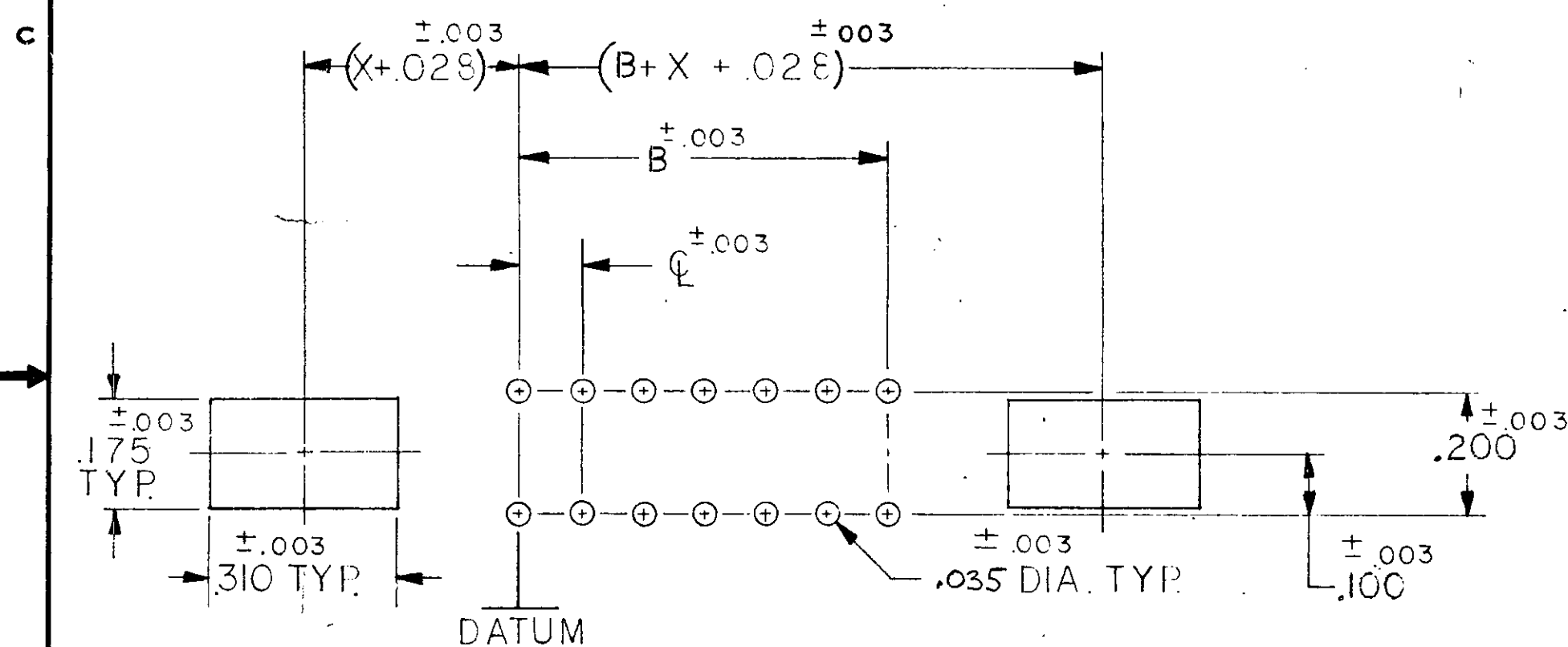
© 1969 BY AMP INCORPORATED. ALL RIGHTS RESERVED. AMP PRODUCTS COVERED BY PATENTS AND/OR PATENTS PENDING.

Unpublished copy not to be reproduced without written permission of AMP.

REVISIONS				
ZONE	LTR	DESCRIPTION	DATE	APPROVED
SEE SHEET 1				

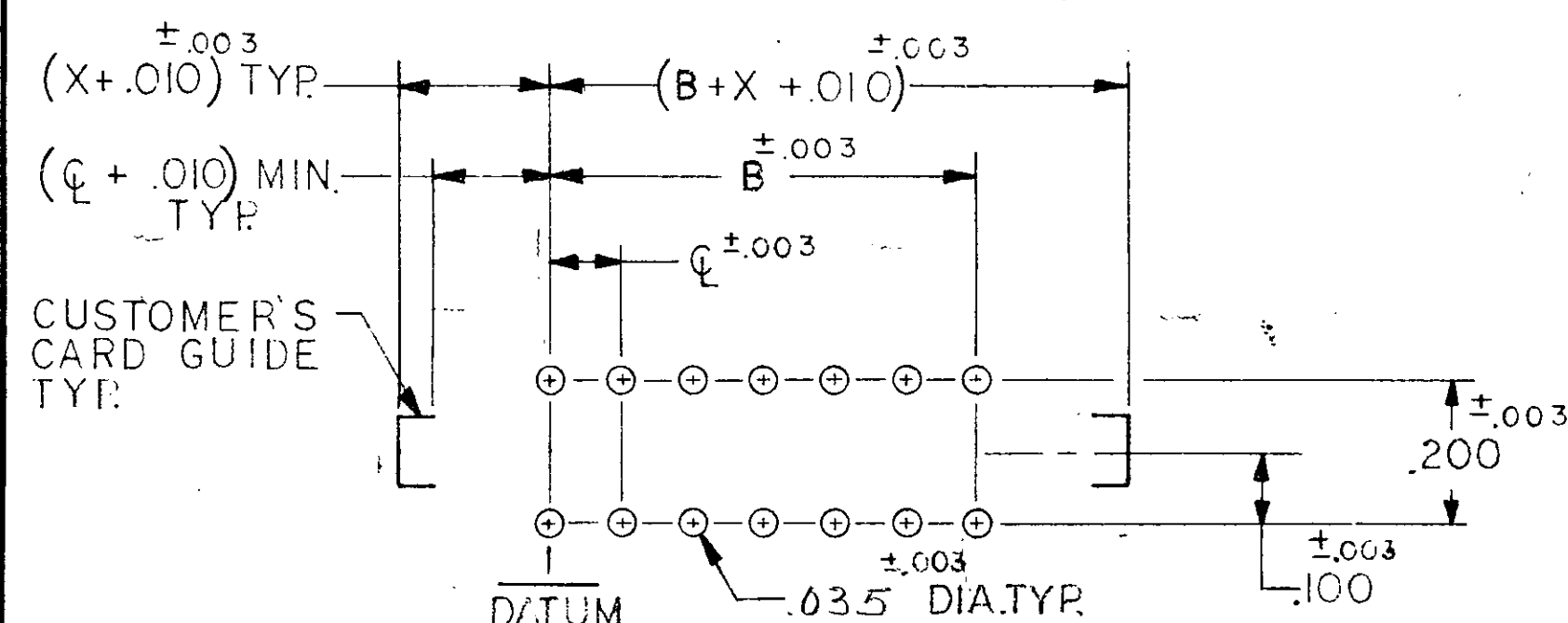


BOARD LAYOUT FOR USE WITH AMP CARD GUIDE PART NO. 583671



MINIMUM $X = \phi + .200$

BOARD LAYOUT FOR USE WITH AMP CARD GUIDE PART NO. 583408 CR 583425

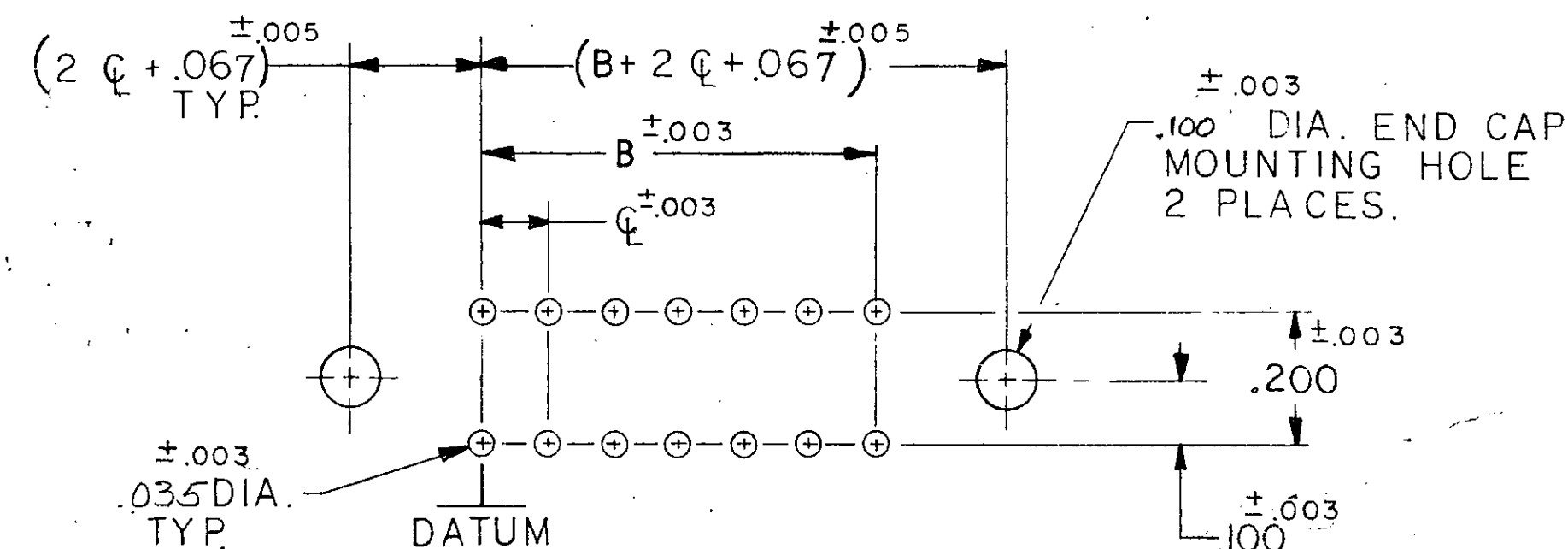


BOARD LAYOUT FOR USE WITH CUSTOMER SUPPLIED CARD GUIDE

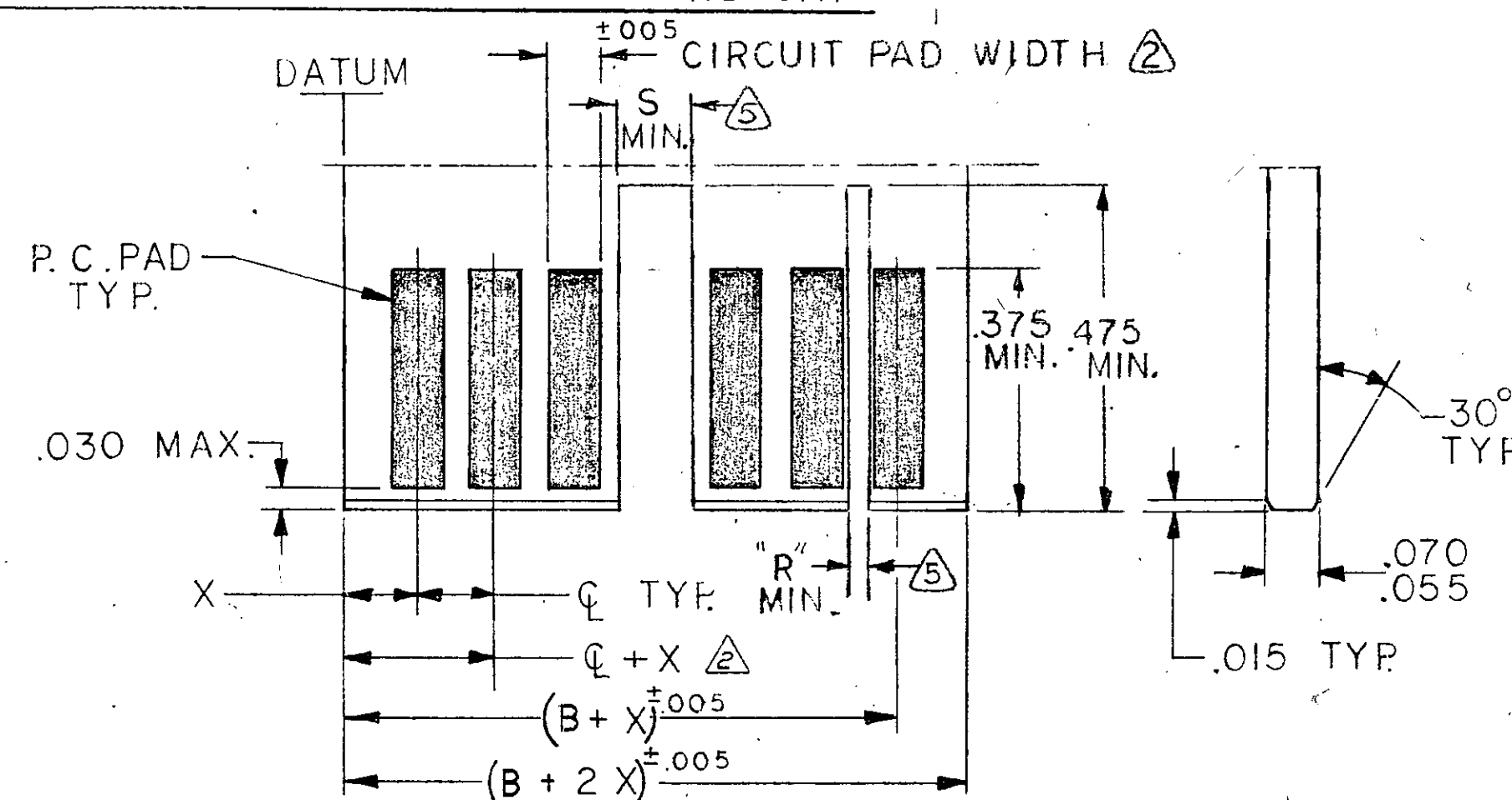
THE SLOT FOR INTER-CONTACT KEYING PLUGS MUST BE CENTERED BETWEEN THE PRINTED CIRCUIT PADS, WHILE THE SLOT FOR ON-CONTACT KEYING PLUGS MUST BE CENTERED ON THE AREA OF A PRINTED CIRCUIT PAD.

INTER-CONTACT KEYING PLUG	"R"	FOR CENTER LINE SPACING
530030-1	.050	.125-.150-.156
530030-2	.040	.100

ON CONTACT KEYING PLUG	"S"	FOR CENTER LINE SPACING
583714-1	.129	.100-.125
583714-2	.160	.150-.156



BOARD LAYOUT FOR USE WITH END CAP



DAUGHTER BOARD LAYOUT

- MAX. ALLOWABLE WARPAGE OF MOTHER BOARD NOT TO EXCEED .005/IN.
- MAX. ALLOWABLE BOW OF DAUGHTER BOARD NOT TO EXCEED .010/IN.
- THICKNESS OF MOTHER BOARD IS .062 FOR DOUBLE SLOTTED CARD GUIDES AND .104 MAX. FOR ALL OTHER MOUNTING CONDITIONS.
- EACH PAD LOCATION INCREASES BY $\phi \pm .005$ WITH A NON-CUMULATIVE TOLERANCE OF $\pm .005$.
- CIRCUIT PAD WIDTH - .052 FOR .100 ϕ
.072 FOR .125 ϕ
.072 FOR .150 ϕ
.080 FOR .156 ϕ
- DIMENSIONS APPLY TO BOTH SIDES OF DAUGHTER BOARD.
- INCREMENTS ON MOTHER BOARD HAVE $\pm .003$ NON-CUMULATIVE TOLERANCE.
- "X" IS A CUSTOMER CONTROLLED DIMENSION EXCEPT FOR END CAP ASSEMBLIES WHERE "X" = $\phi - .003$

UNLESS OTHERWISE SPECIFIED, DIMENSIONS ARE IN INCHES TOLERANCES ON: DECIMALS ± ANGLES ±		CONTRACT NO.		AMP INCORPORATED HARRISBURG, PENNSYLVANIA	
MATERIAL		DR <i>Punkle 1-29-73</i>		NAME	
		CHK <i>M. Zuyler 2-5-73</i>		HOUSING ASSEMBLY	
		APPD <i>Larry M. Brown 2-14-73</i>		TWIN LEAF CONNECTOR	
		REL <i>R. G. Truemp 3/13/73</i>		.125 CENTERS	
DSGN APPD		OTHER APPD		SIZE	CODE IDENT NO.
				C	00779
				SCALE	NUMBER
					583533
				SHEET 2 OF 2 SHES.	

Mouser Electronics

Authorized Distributor

Click to View Pricing, Inventory, Delivery & Lifecycle Information:

[TE Connectivity:](#)

[1-583533-6](#)