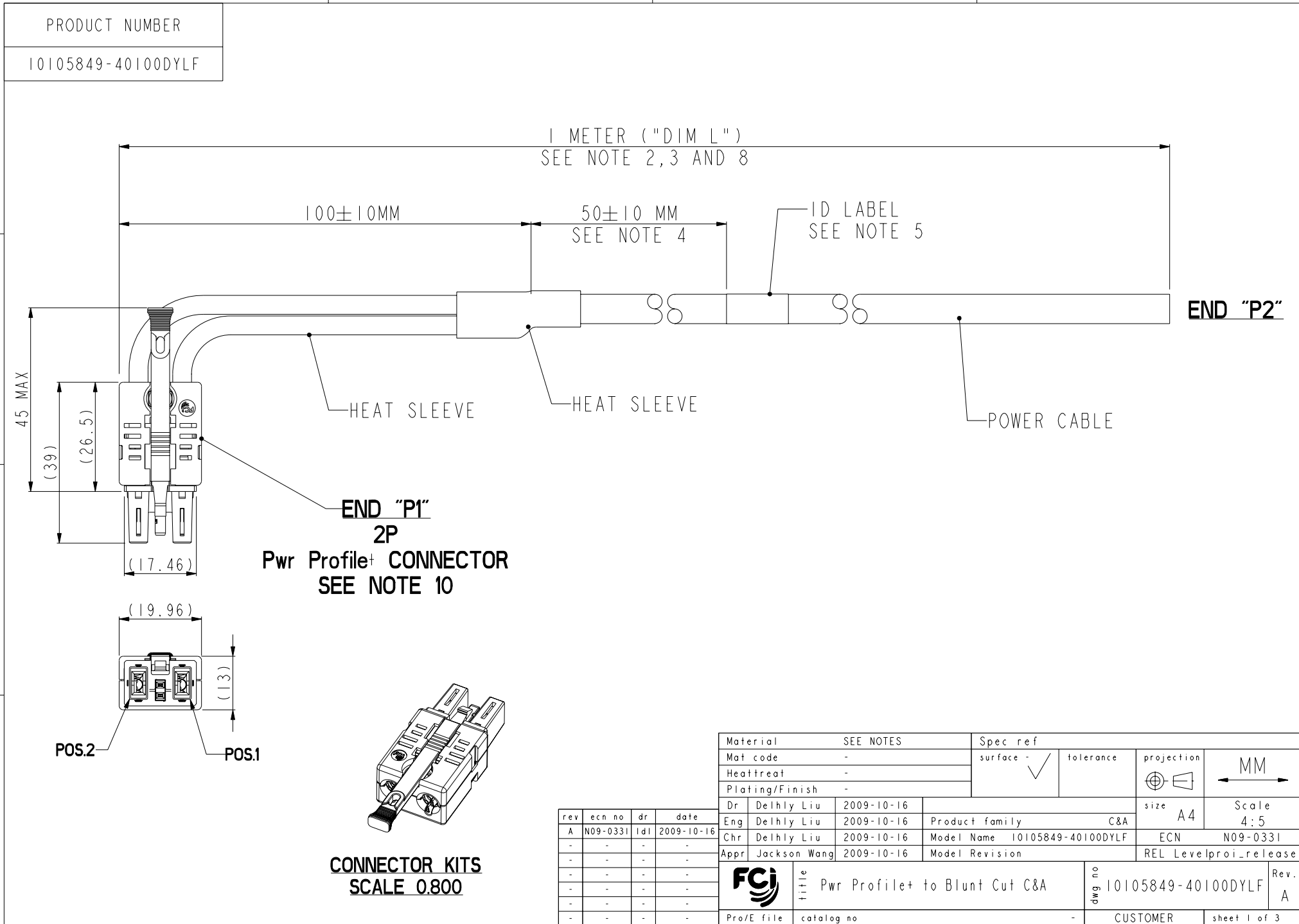
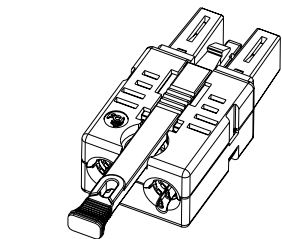




This document is the property of and embodies CONFIDENTIAL and PROPRIETARY information of FCI. No part of the information shown on this document may be used in any way or disclosed to others without the written consent of FCI. Copyright FCI.



END "P1"
2P
Pwr Profile+ CONNECTOR
SEE NOTE 10



CONNECTOR KITS
SCALE 0.800

rev	ecn no	dr	date
A	N09-0331	ldl	2009-10-16
-	-	-	-
-	-	-	-
-	-	-	-
-	-	-	-

Material	SEE NOTES	Spec ref			
Mat code	-	surface	✓	tolerance	projection
Heat treat	-				MM
Plating/Finish	-				←→
Dr	Delhly Liu	2009-10-16	size	A4	Scale
Eng	Delhly Liu	2009-10-16	Product family	C&A	4:5
Chr	Delhly Liu	2009-10-16	Model Name	I0105849-40100DYLf	ECN
Appr	Jackson Wang	2009-10-16	Model Revision		REL Levelproi_release
FCI		title	Pwr Profile+ to Blunt Cut C&A		Rev.
Pro/E file	catalog no	dwg no	I0105849-40100DYLf	A	
			CUSTOMER	sheet 1 of 3	

REV F: 2006-04-17



FCI CONFIDENTIAL

This document is the property of and embodies CONFIDENTIAL and PROPRIETARY information of FCI. No part of the information shown on this document may be used in any way or disclosed to others without the written consent of FCI. Copyright FCI.

PRODUCT NUMBER

10089863-101LF

NOTES:

- ①. END "PI" MATES WITH FCI HEADER PART NUMBER: 10089870 (W/O GROUNDING SHIELD)
OR 10089872 (W/GROUNDING SHIELD)
- ②. UNLESS OTHERWISE SPECIFIED ASSEMBLED LENGTH TOLERANCE =
 - < = 1 METER: ±15.0mm
 - > 1 METER TO 10 METER: ±2% OF "DIM L"
 - > 10 METER: +0.00% / -4% OF "DIM L"
- ③. PART NUMBER DESCRIPTION:

BASE NUMBER

DASH NUMBER

1 0 1 0 5 8 4 9

- 4 0 1 0 0 D Y L F

POWER WIRE SIZE

	WIRE SIZE (mm ²)
4	6 mm ²

* COLOR: BLACK, UNLESS OTHERWISE SPECIFIED

LEAD FREE (SEE NOTE 9)

Y: NOT APPLICABLE TO THIS ASSEMBLY

	SIGNAL CONTACT TYPE	SIGNAL WIRE SIZE
D	SIGNAL JUMPER CONTACT	NONE

LENGTH (DIM L)
 XXXX: XX METERS, XX CENTIMETERS
 0100: 01 METERS, 00 CENTIMETERS

REV F: 2006-04-17

	title	Pwr Profile+ to Blunt Cut C&A	dwg no	10105849-40100DYL F	Rev.	A
Pro/E file	catalog no	-	CUSTOMER	sheet 2 of 3		

PDM: Rev:A

STATUS: Released

4 Printed: Nov 03, 2009



FCI CONFIDENTIAL

This document is the property of and embodies CONFIDENTIAL and PROPRIETARY information of FCI. No part of the information shown on this document may be used in any way or disclosed to others without the written consent of FCI. Copyright FCI.

PRODUCT NUMBER

10105849-40100DYLf

NOTES CONTINUED:

- 4. UNLESS OTHERWISE SPECIFIED LABEL POSITION SHALL BE 50mm FROM CABLE CUT END OF ENDED PI.
- 5. UNLESS OTHERWISE SPECIFIED STANDARD LABEL DETAILS SHALL BE:
 - MANUFACTURER CODE OR NAME
 - FCI P/N
 - REVISION
 - DATE CODE WW/YY FORMAT
 - COUNTRY ORIGIN
 FONT SHALL BE CLEARLY VISABLE AND BLACK IN COLOR.
- 6. ALL CABLE ASSEMBLIES SHALL BE TESTED 100% FOR CONTINUITY AS DEFINED IN WIRING LIST.
- 7. UNLESS OTHERWISE SPECIFIED ALL CABLE ASSEMBLIES SHALL BE 100% HI-POT TESTED BY APPLYING 300V DC FOR MINIMUM OF 10ms, UNLESS ACTIVE COMPONENTS ARE USED IN THIS ASSEMBLY.
- 8. THIS DIMENSION IS A FINISHED PRODUCT LENGTH.
- 9. LEAD FREE PRODUCTS MEET EUROPEAN UNION DIRECTIVES AND OTHER COUNTRY REGULATIONS AS DESCRIBED IN GS-22-008.
- 10. CONNECTOR ASSEMBLIES SHOWN ARE FOR REFERENCE ONLY AND MAY NOT SHOW ALL PART DETAIL.
- 11. PACKAGING SPECIFICATION AS PER: GS-14-1445 AND GS-14-1490.
- 12. MATERIALS:
 - CABLE: UL APPROVED, TEMPERATURE RATING 105°C, 120V MIN.
 - HOUSING: PPA, UL94V-0 GLASS FILLED, COLOR: BLACK
 - POWER CONTACTS: COPPER ALLOY WITH CRIMPING TYPE
 - SIGNAL CONTACTS: COPPER ALLOY
- 13. A "△" SYMBOL WILL BE NEXT TO ANY DIMENSION, VIEW, OR NOTE WHICH HAD BEEN MODIFIED WITH THE CURRENT DRAWING REVISION.

REV F: 2006-04-17

	title	Pwr Profile+ to Blunt Cut C&A	dwg no	10105849-40100DYLf	Rev.	A
Pro/E file	catalog no	-	CUSTOMER	sheet 3 of 3		

Mouser Electronics

Authorized Distributor

Click to View Pricing, Inventory, Delivery & Lifecycle Information:

[FCI / Amphenol:](#)

[10105849-40100DYL](#)