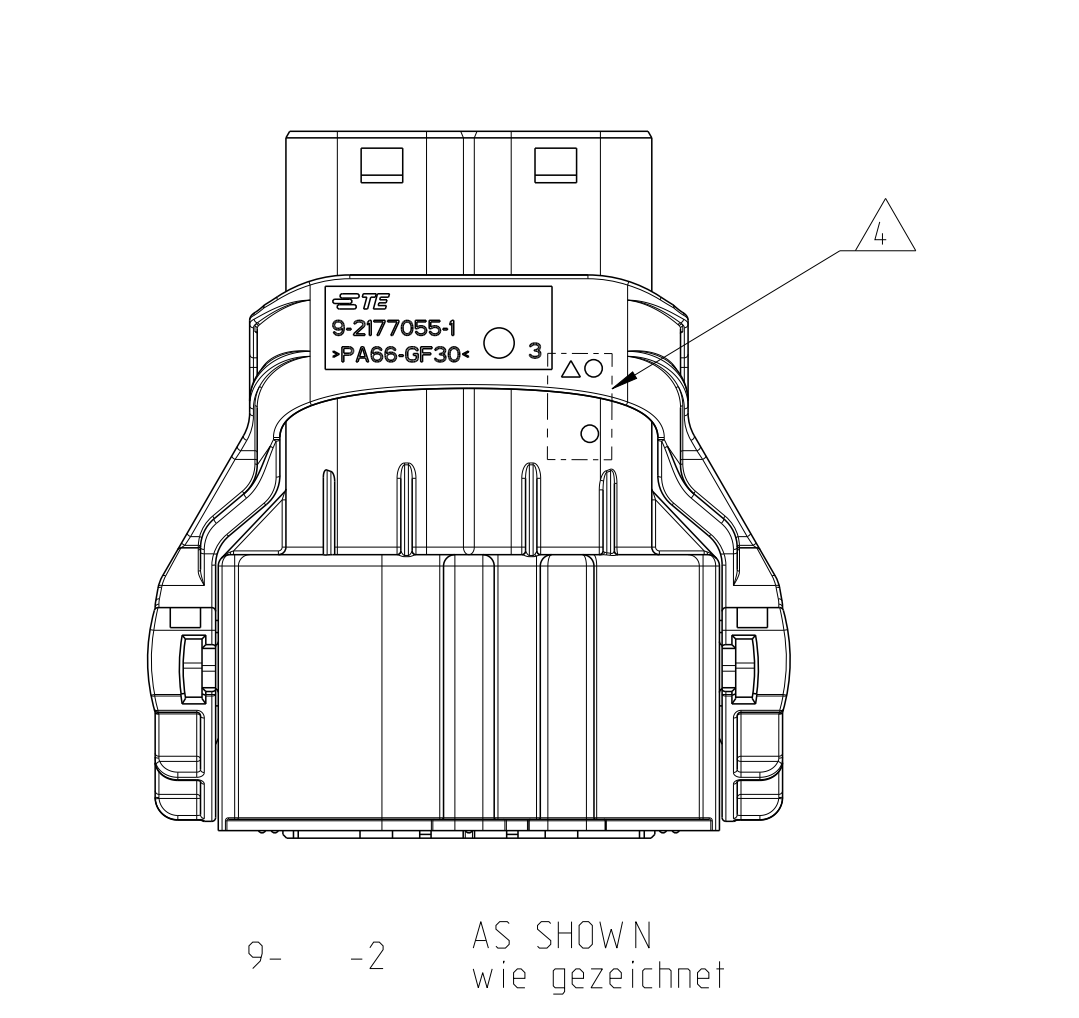
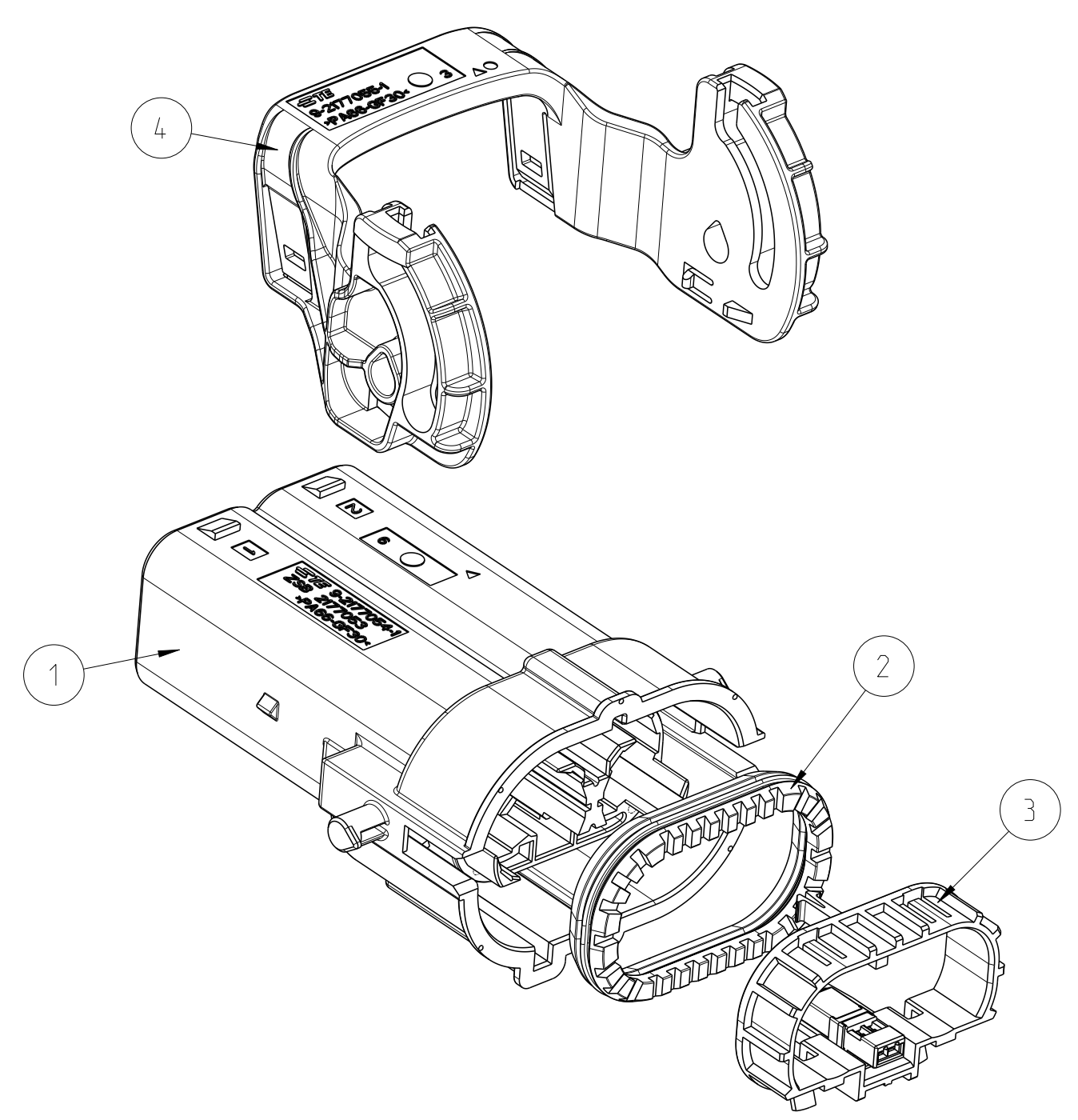


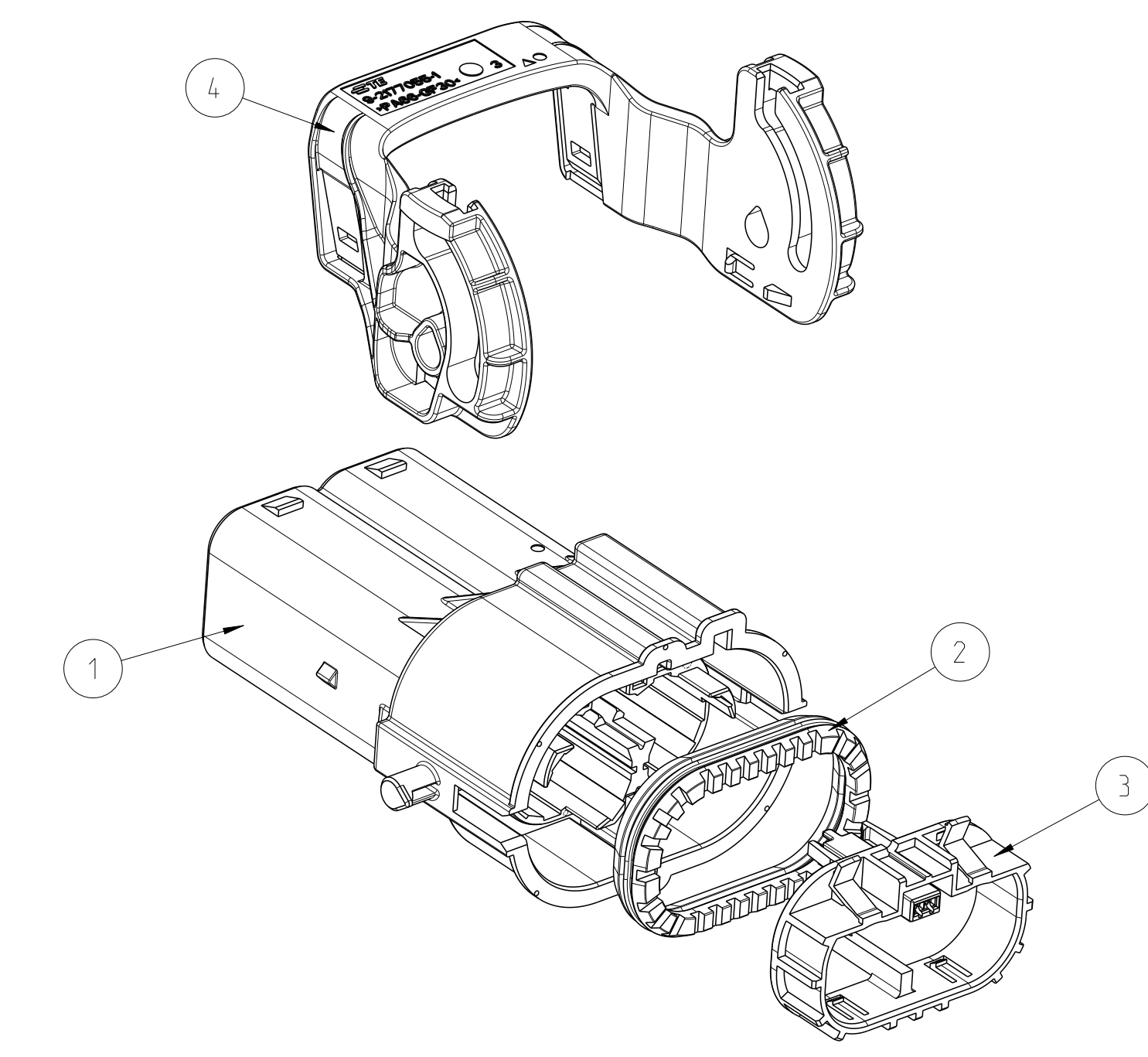
9- -1 AS SHOWN wie gezeichnet



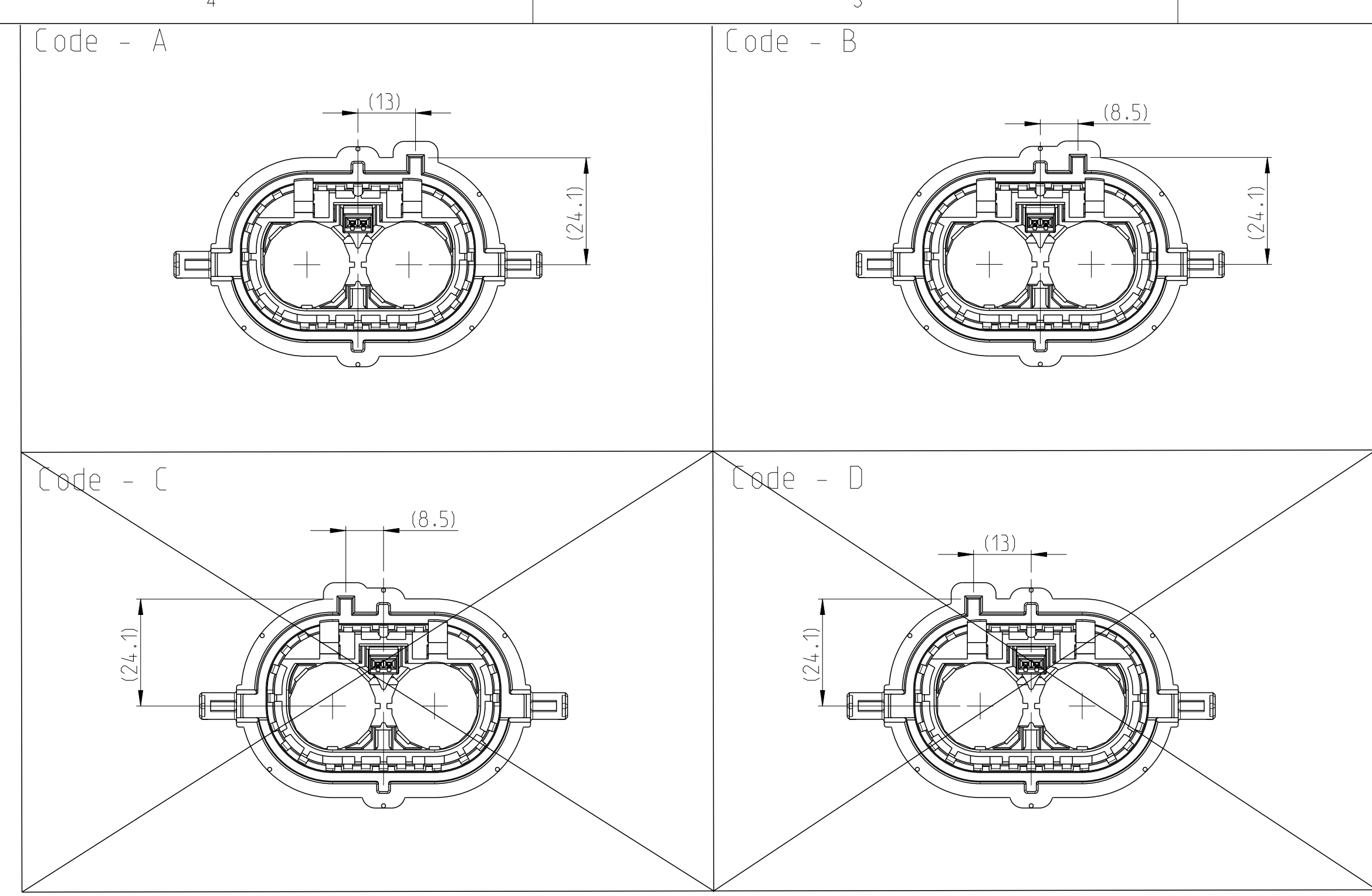
9- -2 AS SHOWN wie gezeichnet



9- -1 AS SHOWN wie gezeichnet



9- -2 AS SHOWN wie gezeichnet

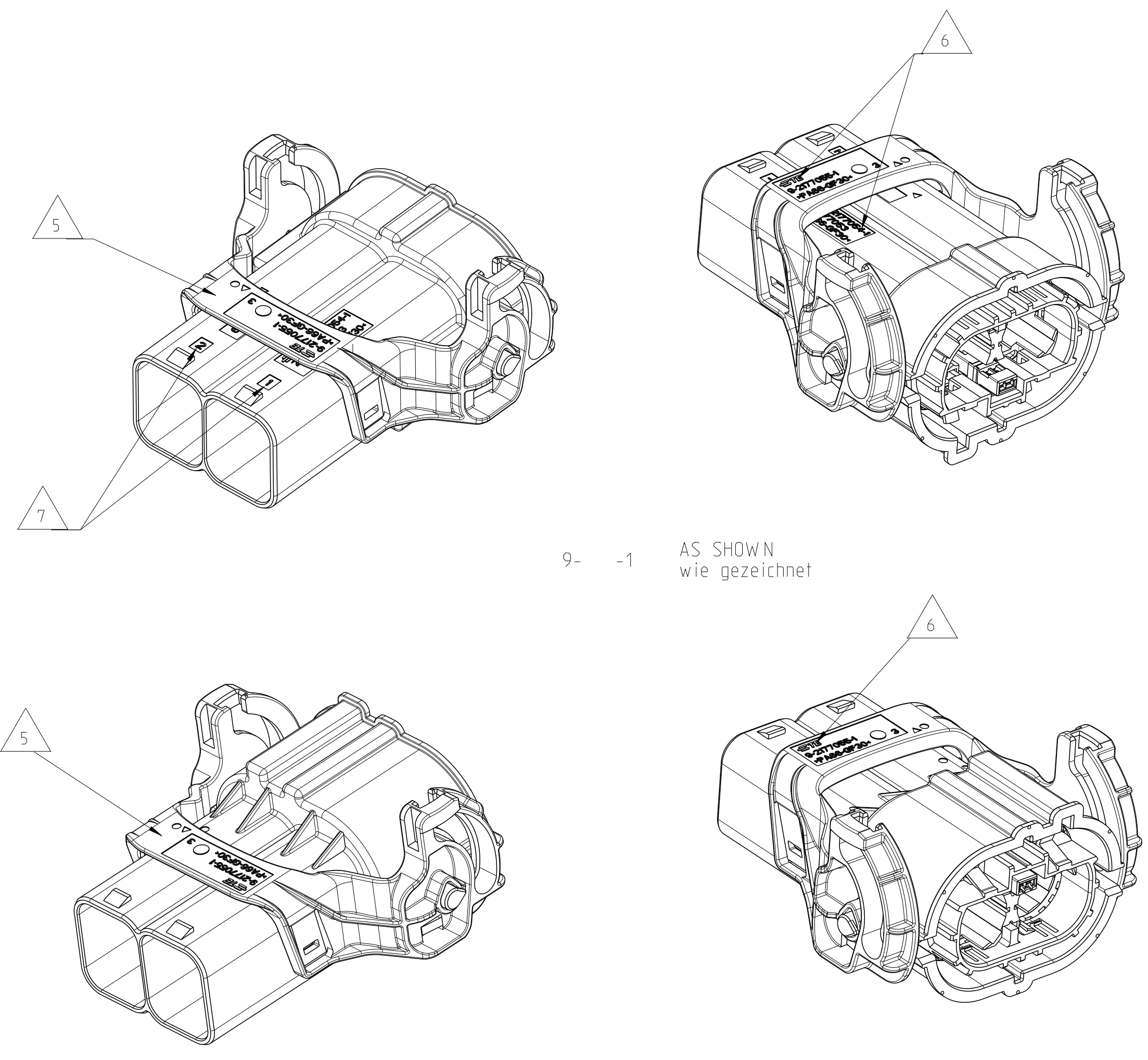


VIEWS WITHOUT LEVER
Ansichten ohne Hebel
CODINGS
Kodierung
1:1

REV.	DATE	BY	CHKD.	DESCRIPTION
1				REVISED TO NEW DRAWING

- NOTES
Bemerkungen
- IN CASE OF DISCREPANCIES BETWEEN GERMAN AND ENGLISH TEXT THE GERMAN TEXT IS BINDING
Im Falle von Unterschieden zwischen dem deutschen und dem englischen Text ist der deutsche Text verbindlich
 - LAYER PACKING WITH CORRUGATED CARDBOARD INTO CARTON ACCORDING SPEC 107-18032
Lagenweise Verpackung mit
 - SPECIFIED WIRE RANGE: SEE Spezifizierter Leitungsquerschnitt: siehe
 - VISUAL CONTROL OF VARIANT, SEE TABLE
Optische Kontrolle der Variante, siehe Tabelle
 - SUPPLY CONDITION: LEVER IN ENDOCKING POSITION
Anlieferzustand: Hebel in Endraststellung
 - SUPPLIER MARK
Lieferantenkennzeichnung
 - CAVITY IDENTIFICATION
Kammerbezeichnung

COD.	TE ASSY-NO.	REV	WEIGHT (g)	QTY	TE PART-NO.	TE SUB-ASSY-NO.	DESCRIPTION	MATERIAL	WEIGHT (g)	SURFACE COLOUR	ITEM	SYMBOL
B	9-2177053-4	6	85	1	9-2177055-2	-	LEVER, 2POS, 180 DEG Spannhebel, 2pos, 180 Grad	PA66-GF30 PN 0-0704115-1 W.-1.5% BATCH PN 1-1192910-5	19.8	WHITE / weiss RAL 9010 (9011)	4	
				1	-	9-2177056-1	2POS, MC ON-1.2, REC HSG, 180 DEG, Assy 2pot, MC ON-1.2, Dichtungshalter-Assy, 180 Grad	-	-	-	3	
				1	9-2141152-1	-	RADIAL SEAL 23.9x43.3 Radialdichtung . 90 Grad	Silopren LSR 3485/35A PN 0-0704300-1/-2	3.2	NATURAL RAL 9001	2	
				1	9-2177054-2	-	2POS, 8MM HV. REC HSG, 180 DEG, SEALED 2pot Gehaeuse, 8mm HV, REC HSG, 180 Grad, gedichtet	PA66-GF30 PN 0-0702281-1 W. 2.5%-4% BATCH PN 0-1573806-1	62	ORANGE RAL 2003	1	
B	9-2177053-3	6	85	1	9-2177055-2	-	LEVER, 2POS, 180 DEG Spannhebel, 2pos, 180 Grad	PA66-GF30 PN 0-0704115-1 W.-1.5% BATCH PN 1-1192910-5	19.8	WHITE / weiss RAL 9010 (9011)	4	
				1	-	9-2177056-1	2POS, MC ON-1.2, REC HSG, 180 DEG, Assy 2pot, MC ON-1.2, Dichtungshalter-Assy, 180 Grad	-	-	-	3	
				1	9-2141152-1	-	RADIAL SEAL 23.9x43.3 Radialdichtung . 90 Grad	Silopren LSR 3485/35A PN 0-0704300-1/-2	3.2	NATURAL RAL 9001	2	
				1	9-2177054-2	-	2POS, 8MM HV. REC HSG, 180 DEG, SEALED 2pot Gehaeuse, 8mm HV, REC HSG, 180 Grad, gedichtet	PA66-GF30 PN 0-0702281-1 W. 2.5%-4% BATCH PN 0-1573806-1	62	ORANGE RAL 2003	1	
A	9-2177053-2	6	85	1	9-2177055-1	-	LEVER, 2POS, 180 DEG Spannhebel, 2pos, 180 Grad	PA66-GF30 PN 0-0704115-1	19.8	BLACK / schwarz RAL 9005 (9011)	4	
				1	-	9-2177056-1	2POS, MC ON-1.2, REC HSG, 180 DEG, Assy 2pot, MC ON-1.2, Dichtungshalter-Assy, 180 Grad	-	-	-	3	
				1	9-2141152-1	-	RADIAL SEAL 23.9x43.3 Radialdichtung . 90 Grad	Silopren LSR 3485/35A PN 0-0704300-1/-2	3.2	NATURAL RAL 9001	2	
				1	9-2177054-1	-	2POS, 8MM HV. REC HSG, 180 DEG, SEALED 2pot Gehaeuse, 8mm HV, REC HSG, 180 Grad, gedichtet	PA66-GF30 PN 0-0702281-1 W. 2.5%-4% BATCH PN 0-1573806-1	62	ORANGE RAL 2003	1	
A	9-2177053-1	6	85	1	9-2177055-1	-	LEVER, 2POS, 180 DEG Spannhebel, 2pos, 180 Grad	PA66-GF30 PN 0-0704115-1	19.8	BLACK / schwarz RAL 9005 (9011)	4	
				1	-	9-2177056-1	2POS, MC ON-1.2, REC HSG, 180 DEG, Assy 2pot, MC ON-1.2, Dichtungshalter-Assy, 180 Grad	-	-	-	3	
				1	9-2141152-1	-	RADIAL SEAL 23.9x43.3 Radialdichtung . 90 Grad	Silopren LSR 3485/35A PN 0-0704300-1/-2	3.2	NATURAL RAL 9001	2	
				1	9-2177054-1	-	2POS, 8MM HV. REC HSG, 180 DEG, SEALED 2pot Gehaeuse, 8mm HV, REC HSG, 180 Grad, gedichtet	PA66-GF30 PN 0-0702281-1 W. 2.5%-4% BATCH PN 0-1573806-1	62	ORANGE RAL 2003	1	



9- -1 AS SHOWN wie gezeichnet

9- -2 AS SHOWN wie gezeichnet

NOTE Bem.	FEATURE Merkmal
	PRODUCT-SPEC. 108-94297 Produktl-Spez.
	APPLICATION-SPEC. 114-94130 Verarbeitungs-Spez.

THIS DRAWING IS A CONTROLLED DOCUMENT.		DATE: 11MAY2011	REV: 1	SCALE: 1:1
DRAWN BY: J. Salzman		CHKD BY: U. Hoedemeyer	DATE: 12MAY2011	SCALE: 1:1
MATERIAL: SEE TABLE		FINISH: SEE TABLE	WEIGHT: SEE TABLE	Customer Drawing
SITE: A0		CASE CODE: 000779	DRAWING NO: 2177053	SCALE: 1:1
SHEET: 2		OF: 2	REV: H2	

Mouser Electronics

Authorized Distributor

Click to View Pricing, Inventory, Delivery & Lifecycle Information:

[TE Connectivity:](#)

[1-2177053-2](#)