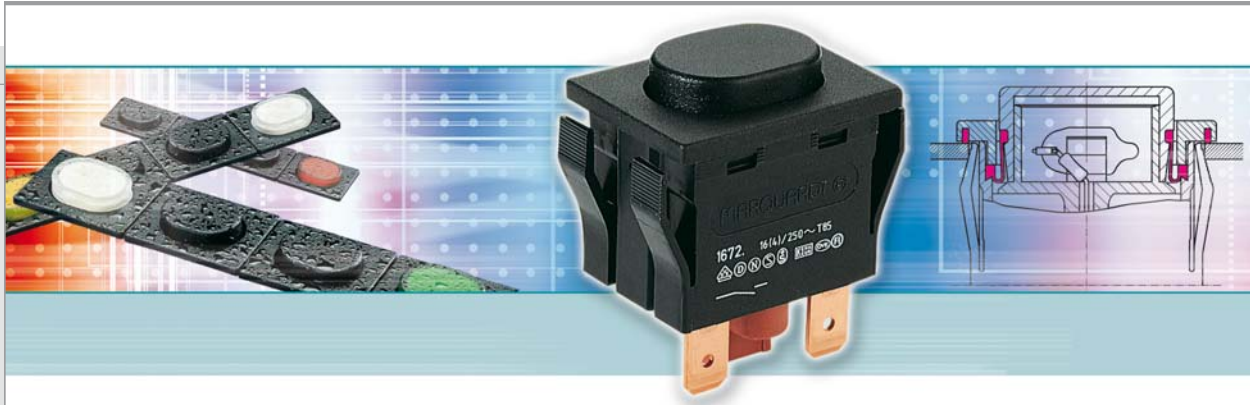


SERIES 1670 - SINGLE AND DOUBLE-POLE PUSHBUTTON SWITCHES

TO 16 (4) A 250 V AC




PRODUCT FEATURES

- ◆ Illuminated and non-illuminated pushbutton switch
- ◆ Internal gasket for IP 54
- ◆ Proven jump contact switching system (double interrupting)
- ◆ Opening and closing speed independent of the actuating speed
- ◆ Product-dependent with external lamp connection

ON REQUEST



- ◆ Other colors
- ◆ Other printing variants
- ◆ Other connection types
- ◆ Other lamp variants
- ◆ Cable assembly

Mechanical life endurance	5E4
Operating force	ca. 8 N
Contact resistance (new condition)	< 100 mOhm (1 A 12 V DC)
Insulation resistance (new condition)	> 100 MOhm (500 V DC)
Voltage strength at 250 V	1 500 V function insulation / basic insulation 3 000 V reinforced insulation 500 V small contact distance
Proof tracking	250 PTI
Insulation spacing	acc. to EN 61058 for reinforced or double insulation
Protection type	IP 54
Ambient temperature	connection side -20 °C ... +85 °C actuating side -20 °C ... +55 °C
Flammability	UL 94 V-2
Heat and fire resistance	850 °C (category D)
Material	actuator PA / PC (product-dependent) housing PA / PA glass fiber-reinforced (product-dependent) connections Cu
Plug force of the terminals	≤ 80 N
Approval marks	
Suitable for appliances of protection class II	



SERIES 1670 - SINGLE AND DOUBLE-POLE PUSHBUTTON SWITCHES

TO 16 (4) A 250 V AC

 single-pole		Voltage lamp in V	Actuator description	Housing color	16 (4) A 250 V AC 1E4	12 (4) A 250 V AC 1E4	Connection type	Connection description	Contact distance in mm	Contact material	Miscellaneous	Stock version
Normally open contact (SPNO)												
1675.5315	230			●			6.3 / 2 x 4.8	≥ 3	Ag	external lamp connection		
1672.5101				●			6.3	≥ 3	Ag			
Switch (SPDT)												
1673.5501					●		4.8	< 3	Ag			
 double-pole		Voltage lamp in V	Actuator description	Housing color	16 (4) A 250 V AC 1E4	12 (4) A 250 V AC 1E4	Connection type	Connection description	Contact distance in mm	Contact material	Miscellaneous	Stock version
ON/OFF switch (SPST)												
1670.5201	230			●			6.3	≥ 3	Ag		●	
1670.5202	230			●			6.3	≥ 3	Ag		●	
1670.5204	230			●			6.3	≥ 3	Ag			
1670.5304	230			●			6.3 / 2 x 4.8	≥ 3	Ag	external lamp connection		
1670.5203	115 - 230			●			6.3	≥ 3	Ag			
1671.5201				●			6.3	≥ 3	Ag		●	
1671.5203				●			6.3	≥ 3	Ag	cover gray		
Normally open contact (SPNO)												
1671.5101				●			6.3	≥ 3	Ag			
1671.5104				●			6.3	≥ 3	Ag			

ROCKER SWITCHES

PUSHBUTTON SWITCHES

TOGGLE SWITCHES

SLIDE SWITCHES

ROTARY SWITCHES

FOOT SWITCHES

POWER TOOL SWITCHES

TACT AND KEY SWITCHES

SNAP-ACTION SWITCHES

MICRO-SIGNAL SWITCHES

SENSORS

SERIES 1670 - SINGLE AND DOUBLE-POLE PUSHBUTTON SWITCHES

TO 16 (4) A 250 V AC



Lamp

	Voltage lamp in V	Actuator description	Housing color	16 (4) A 250 V AC 1E4	12 (4) A 250 V AC 1E4	Connection type	Connection description	Contact distance in mm	Contact material	Miscellaneous	Stock version
Lamp											
1677.5306	230						6.3				
1677.5307	115 - 230						6.3				
1677.5308	115 - 230						6.3				

Further information under

WWW.MARQUARDT.DE

ROCKER SWITCHES

PUSHBUTTON SWITCHES

TOGGLE SWITCHES

SLIDE SWITCHES

ROTARY SWITCHES

FOOT SWITCHES

POWER TOOL SWITCHES

TACT AND KEY SWITCHES

SNAP-ACTION SWITCHES

MICRO-SIGNAL SWITCHES

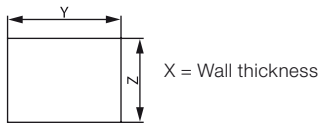
SENSORS

SERIES 1670 - SINGLE AND DOUBLE-POLE PUSHBUTTON SWITCHES

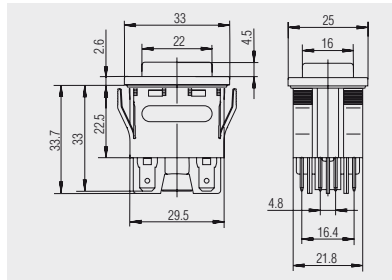
TO 16 (4) A 250 V AC



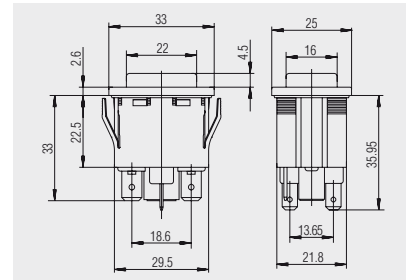
Basic types 1672, 1673 and 1675
single-pole
illuminated / non-illuminated



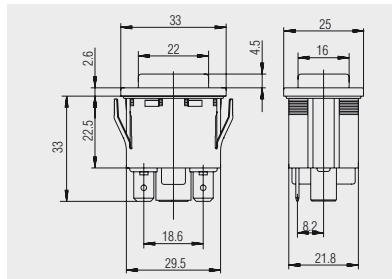
X	Y	Z
0.8 ... 5.0	30.0 +0.15	22.2 +0.15



Quick-connect terminal 4.8
1673.5501



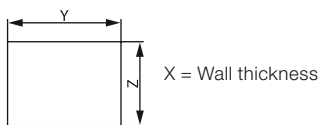
Quick-connect terminal 6.3 / 2 x 4.8
external lamp connection
basic type 1675



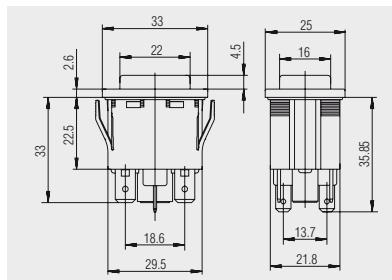
Quick-connect terminal 6.3
basic type 1672



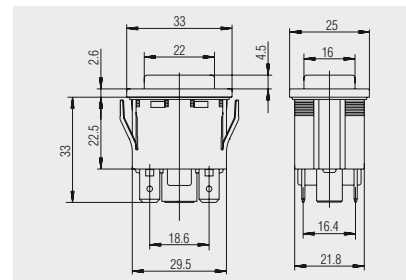
Basic types 1670 and 1671
double-pole
illuminated / non-illuminated



X	Y	Z
0.8 ... 5.0	30.0 +0.15	22.2 +0.15



Quick-connect terminal 6.3 / 2 x 4.8
chromated external lamp
connection
1670.5304



Quick-connect terminal 6.3
basic types 1670 and 1671

ROCKER SWITCHES

PUSHBUTTON SWITCHES

TOGGLE SWITCHES

SLIDE SWITCHES

ROTARY SWITCHES

FOOT SWITCHES

POWER TOOL SWITCHES

TACT AND KEY SWITCHES

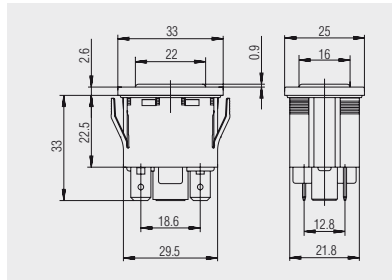
SNAP-ACTION SWITCHES

MICRO-SIGNAL SWITCHES


SENSORS

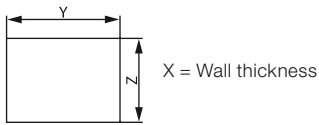
SERIES 1670 - SINGLE AND DOUBLE-POLE PUSHBUTTON SWITCHES

TO 16 (4) A 250 V AC

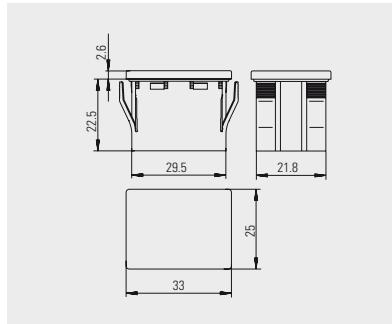


Basic type 1677
Lamp

 Quick-connect terminal 6.3



X	Y	Z
0.8 ... 5.0	30 ^{+0.15}	22.2 ^{+0.15}










Dummy piece for size of basic type 1677 of PA with housing in black and cover in blue

Dummy piece
203.020.013


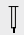
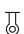





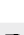
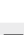
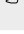
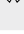
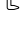
Further information under

WWW.MARQUARDT.DE





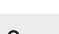
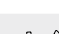


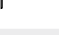

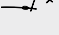
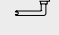


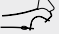
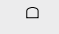
APPROVAL MARKS

	ENEC 05 (KEMA)		UL (USA)
	ENEC 10 (VDE)		UL (USA + Canada)
	VDE		CSA (Canada)
			CSA (Canada + USA)

TERMINAL SYMBOLS

	Quick-connect terminal		Cable
	Solder terminal		Terminal strip
	Short solder terminal		Push-in terminal
	PCB terminal		Snap-in terminal
	PCB terminal angled to left		Cut terminal
	PCB terminal angled to right		Screw terminal
	Socket terminal		

ACTUATOR SYMBOLS

	Straight lever		Lever simulated roller with adjusting screw
	Lever simulated roller		Lever with adjusting screw and roller
	Lever with roller		Lever with cams
	Differential lever		Housing cams
	Spring lever		Pushbutton
	Spring lever bent		Rotary shaft
	Spring lever with molded spring cam		Standard actuator
	Lever with adjusting screw		Mushroom-shaped actuator

ABBREVIATIONS TECHNICAL DRAWINGS

ad	Adjustable	OP	Operating position
AN	Anode	OP NC	Operating position normally closed contact
BL	Block	OP NO	Operating position normally open contact
FH	Fixing hole, locating hole fixing pin	OR	On request
FI	Fields for function indicator	RC	Recommended cut-out
FP	Free position	RL	Reference level
FX	Fixing pin	SH	Snap-in hole
ju	Adjusted	SL	Symbol limit
MC	Marking cathode	SP	Solder pads
MF	Mounting frame	ST	Slide travel
MP	Measuring point	SW	Switching position
OFF	Off	TH	Terminal hole
off-range	Zero position	tk	Thick
OG	Operating range	to	Top
ON	On	TP	Total travel position

SWITCHING FREQUENCY (ABBREVIATIONS)

e.g. 5E4 switching cycles $\hat{=}$ 50 000 switching cycles