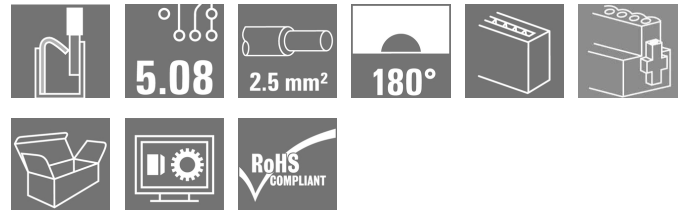


## OMNIMATE Signal - series BL/SL 5.08 BLDF 5.08/06/180F SN OR BX

**Weidmüller Interface GmbH & Co. KG**  
Klingenbergstraße 16  
D-32758 Detmold  
Germany  
Fon: +49 5231 1429-0  
Fax: +49 5231 14292083  
www.weidmueller.com



The powerful daisy-chain solution for high-performance signal bus applications is also suitable for 400V auxiliary power chains with 18.5A current-carrying capacity. The large clamping capacity (up to 2.5mm<sup>2</sup> wire cross-sections) is particularly beneficial for long bus cables or high currents because of the low voltage drop. Four flange variations, including the patented release latch, allow for user-friendly unplugging designs.

### General ordering data

|              |   |
|--------------|---|
| Type         | BLDF 5.08/06/180F SN OR BX  |
| Order No.    | <a href="#">1065090000</a>  |
| Version      | PCB plug-in connector, female plug, 5.08 mm, No. of poles: 6, 180°, PUSH IN, Clamping range, rated connection, max.: 3.31 mm <sup>2</sup> , Box |
| GTIN (EAN)   | 4032248817801   |
| Qty.         | 28 pc(s).   |
| Product data | IEC: 400 V / 20.8 A / 0.2 - 2.5 mm <sup>2</sup><br>UL: 300 V / 10 A / AWG 12 - AWG 26   |
| Packaging    | Box   |

**OMNIMATE Signal - series BL/SL 5.08  
BLDF 5.08/06/180F SN OR BX**

**Weidmüller Interface GmbH & Co. KG**  
 Klingenbergstraße 16  
 D-32758 Detmold  
 Germany  
 Fon: +49 5231 1429-0  
 Fax: +49 5231 14292083  
 www.weidmueller.com

**Technical data****Dimensions and weights**

|            |         |
|------------|---------|
| Net weight | 18.35 g |
|------------|---------|

**System parameters**

|  |                                     |  |                        |
|--|-------------------------------------|--|------------------------|
| Product family                             | OMNIMATE Signal - series BL/SL 5.08 | Wire connection method                       | PUSH IN                |
| Pitch in mm (P)                            | 5.08 mm                             | Pitch in inches (P)                          | 0.2 inch               |
| Conductor outlet direction                 | 180°                                | No. of poles                                 | 6                      |
| L1 in mm                                   | 25.4 mm                             | L1 in inches                                 | 1 inch                 |
| Number of rows                             | 1                                   | Pin series quantity                          | 1                      |
| Rated cross-section                        | 2.5 mm <sup>2</sup>                 | Touch-safe protection acc. to DIN VDE 57 106 | Safe from finger touch |
| Touch-safe protection acc. to DIN VDE 0470 | IP 20                               | Volume resistance                            | 4.50 mΩ                |
| Can be coded                               | Yes                                 | Stripping length                             | 10 mm                  |
| Screwdriver blade                          | 0.6 x 3.5                           | Screwdriver blade standard                   | DIN 5264               |
| Plugging cycles                            | 25                                  | push-in force/pole                           | 7 N                    |
| Withdrawal force per pole                  | 7 N                                 | Packaging                                    | Box                    |

**Material data**

|                                       |          |                                       |                          |
|---------------------------------------|----------|---------------------------------------|--------------------------|
| Insulating material                   | PBT      | Colour                                | Orange                   |
| Colour chart (similar)                | RAL 2000 | Insulating material group             | IIIa                     |
| CTI                                   | ≥ 200    | Insulation resistance                 | ≥ 10 <sup>8</sup> Ω      |
| UL 94 flammability rating             | V-0      | Contact material                      | CuSn                     |
| Contact surface                       | tinned   | Layer structure of plug contact       | 4-8 μm Sn hot-dip tinned |
| Storage temperature, min.             | -25 °C   | Storage temperature, max.             | 55 °C                    |
| Max. relative humidity during storage | 80 %     | Operating temperature, min.           | -50 °C                   |
| Operating temperature, max.           | 100 °C   | Temperature range, installation, min. | -30 °C                   |
| Temperature range, installation, max. | 100 °C   |                                       |                          |

**Conductors suitable for connection**

|   |                      |   |                      |
|---|----------------------|---|----------------------|
| Clamping range, rated connection, min.          | 0.13 mm <sup>2</sup> | Clamping range, rated connection, max.          | 3.31 mm <sup>2</sup> |
| Wire connection cross section AWG, min.         | AWG 26               | Wire connection cross section AWG, max.         | AWG 12               |
| Solid, min. H05(07) V-U                         | 0.2 mm <sup>2</sup>  | Solid, max. H05(07) V-U                         | 2.5 mm <sup>2</sup>  |
| Flexible, min. H05(07) V-K                      | 0.2 mm <sup>2</sup>  | Flexible, max. H05(07) V-K                      | 2.5 mm <sup>2</sup>  |
| w. plastic collar ferrule, DIN 46228 pt 4, min. | 0.25 mm <sup>2</sup> | w. plastic collar ferrule, DIN 46228 pt 4, max. | 2.5 mm <sup>2</sup>  |
| w. wire end ferrule, DIN 46228 pt 1, min.       | 0.25 mm <sup>2</sup> | w. wire end ferrule, DIN 46228 pt 1, max.       | 2.5 mm <sup>2</sup>  |
| Plug gauge acc. to EN 60999 a x b; Ø            | 2.8 mm x 2.0 mm      |   |                      |


**OMNIMATE Signal - series BL/SL 5.08  
BLDF 5.08/06/180F SN OR BX**

**Weidmüller Interface GmbH & Co. KG**  
Klingenbergstraße 16  
D-32758 Detmold  
Germany  
Fon: +49 5231 1429-0  
Fax: +49 5231 14292083  
www.weidmueller.com


**Technical data****Rated data acc. to IEC**

|   |                        |   |                   |
|---|------------------------|---|-------------------|
| tested acc. to standard   | IEC 60664-1, IEC 61984 | Rated current, min. no. of poles (Ta = 20°C)                          | 20.8 A            |
| Rated current, max. no. of poles (Ta = 20°C)                              | 17.4 A                 | Rated current, min. no. of poles (Ta = 40°C)                          | 17.9 A            |
| Rated current, max. no. of poles (Ta = 40°C)                              | 14.9 A                 | Rated current cross-connector, min. number of poles (Ta=20°C)         | 28.1 A            |
| Rated current cross-connector, max. number of poles (Ta=20°C)             | 23.3 A                 | Rated current cross-connector, min. number of poles (Ta=40°C)         | 24.2 A            |
| Rated current cross-connector, max. number of poles (Ta=40°C)             | 19.9 A                 | Rated voltage for surge voltage class / pollution degree II/2         | 400 V             |
| Rated voltage for surge voltage class / pollution degree III/2            | 320 V                  | Rated voltage for surge voltage class / pollution degree III/3        | 250 V             |
| Rated impulse voltage for surge voltage class/ pollution degree II/2      | 4 kV                   | Rated impulse voltage for surge voltage class/ pollution degree III/2 | 4 kV              |
| Rated impulse voltage for surge voltage class/ contamination degree III/3 | 4 kV                   | Short-time withstand current resistance                               | 3 x 1s with 120 A |

**Rated data acc. to CSA**

|                               |   |                               |                |
|-------------------------------|---|-------------------------------|----------------|
| Institute (CSA)               |  | Certificate No. (CSA)         | 200039-1121690 |
| Rated voltage (Use group B)   | 300 V   | Rated voltage (use group D)   | 300 V          |
| Rated current (use group B)   | 10 A  | Rated current (use group D)   | 10 A           |
| Wire cross-section, AWG, min. | AWG 12  | Wire cross-section, AWG, max. | AWG 26         |
| Reference to approval values  | Specifications are maximum values, details - see approval certificate.              |                               |                |

**Rated data acc. to UL 1059**

|                               |   |                               |        |
|-------------------------------|---|-------------------------------|--------|
| Institute (cURus)             |  | Certificate No. (cURus)       | E60693 |
| Rated voltage (use group B)   | 300 V   | Rated voltage (use group D)   | 300 V  |
| Rated current (use group B)   | 10 A  | Rated current (use group D)   | 10 A   |
| Wire cross-section, AWG, min. | AWG 12  | Wire cross-section, AWG, max. | AWG 26 |
| Reference to approval values  | Specifications are maximum values, details - see approval certificate.              |                               |        |

**Cross-connector rated data according to DIN IEC**

|   |        |   |        |
|---|--------|---|--------|
| Rated current cross-connector, min. number of poles (Ta=20°C) | 28.1 A | Rated current cross-connector, max. number of poles (Ta=20°C) | 23.3 A |
| Rated current cross-connector, min. number of poles (Ta=40°C) | 24.2 A | Rated current cross-connector, max. number of poles (Ta=40°C) | 19.9 A |

**Classifications**

|            |             |            |             |
|------------|-------------|------------|-------------|
| ETIM 4.0   | EC002637    | ETIM 5.0   | EC002637    |
| ETIM 6.0   | EC002637    | eClass 6.2 | 27-26-07-04 |
| eClass 7.1 | 27-44-04-02 | eClass 8.1 | 27-44-04-02 |
| eClass 9.0 | 27-44-04-02 | eClass 9.1 | 27-44-04-02 |

Creation date January 1, 2018 4:04:39 PM CET

**OMNIMATE Signal - series BL/SL 5.08  
BLDF 5.08/06/180F SN OR BX**

**Weidmüller Interface GmbH & Co. KG**  
Klingenbergstraße 16  
D-32758 Detmold  
Germany  
Fon: +49 5231 1429-0  
Fax: +49 5231 14292083  
www.weidmueller.com

**Technical data**
**Notes**

|                |  |
|----------------|--|
| Notes          | <ul style="list-style-type: none"> <li>• Additional colours on request</li> <li>• Gold-plated contact surfaces on request</li> <li>• Rated current related to rated cross-section &amp; min. No. of poles.</li> <li>• Wire end ferrule without plastic collar to DIN 46228/1</li> <li>• Wire end ferrule with plastic collar to DIN 46228/4</li> <li>• P on drawing = pitch</li> </ul> |
| IPC conformity | The products are developed, manufactured and delivered according to the internationally recognised IPC-A-610 standard, category "permissible". More extensive demands on the products can be evaluated on request.   |

**Approvals**

Approvals



ROHS Conform

**Downloads**

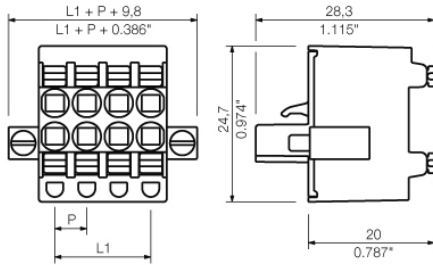
|   |  |
|---|--|
| Approval/Certificate/Document of Conformity | <a href="#">Declaration of the Manufacturer</a>  |
| Brochure/Catalogue                          | <a href="#">FL DRIVES EN</a><br><a href="#">MB DEVICE MANUF. EN</a><br><a href="#">FL DRIVES DE</a><br><a href="#">CAT 2 PORTFOLIOGUIDE EN</a><br><a href="#">FL BUILDING SAFETY EN</a><br><a href="#">FL APPL LED LIGHTING EN</a><br><a href="#">FLIndustr.CONTROLS EN</a><br><a href="#">FL MACHINE SAFETY EN</a><br><a href="#">FL HEATING ELECTR EN</a><br><a href="#">FL APPL INVERTER EN</a><br><a href="#">FL_BASE_STATION_EN</a><br><a href="#">FL ELEVATOR EN</a><br><a href="#">FL POWER SUPPLY EN</a><br><a href="#">FL 72H SAMPLE SER EN</a><br><a href="#">PO OMNIMATE EN</a> |
| Engineering Data                            | <a href="#">EPLAN, WSCAD</a>   |
| White Paper wire connection                 | <a href="#">Download Whitepaper</a>  |

**OMNIMATE Signal - series BL/SL 5.08  
BLDF 5.08/06/180F SN OR BX**

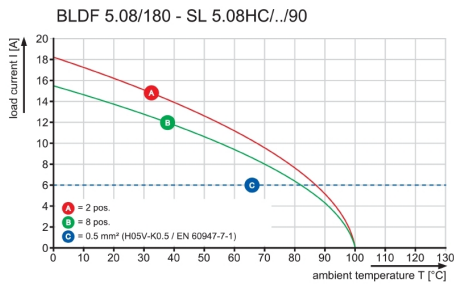
**Weidmüller Interface GmbH & Co. KG**  
Klingenbergstraße 16  
D-32758 Detmold  
Germany  
Fon: +49 5231 1429-0  
Fax: +49 5231 14292083  
www.weidmueller.com

**Drawings**

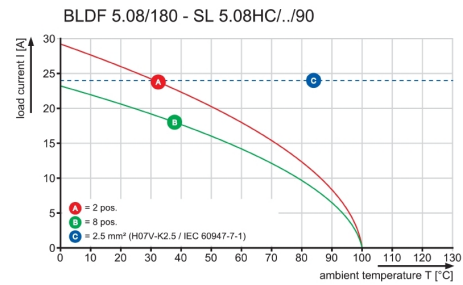
**Dimensional drawing**



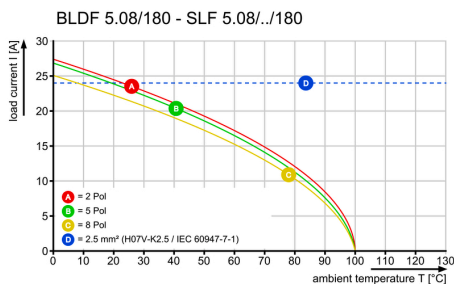
**Graph**



**Graph**



**Graph**



**OMNIMATE Signal - series BL/SL 5.08  
BLDF 5.08/06/180F SN OR BX**

**Weidmüller Interface GmbH & Co. KG**  
Klingenbergstraße 16  
D-32758 Detmold  
Germany  
Fon: +49 5231 1429-0  
Fax: +49 5231 14292083  
www.weidmueller.com

**Mating connector (fully pluggable)**
**SL-SMT 5.08/180LF Tape**


High-temperature-resistant pin header, packed in box or tape. On tape, with 1.5 mm solder pin, optimised for automatic assembly. 3.2 mm solder pin suitable for reflow and wave soldering. The pin headers provide space for labelling and can be coded. HC = High Current.

**General ordering data**

| Type            | Order No.                  | Version                            | GTIN (EAN)    | Qty.       | Product data        | Packaging        |
|-----------------|----------------------------|------------------------------------|---------------|------------|---------------------|------------------|
| SL-SMT          | <a href="#">1776404001</a> | PCB plug-in connector, male        | 4032248163625 | 250 pc(s). | IEC: 400 V / 27.5 A | Tape             |
| 5.08HC/06/180LF |                            | header, Solder flange, THT/        |               |            | UL: 300 V / 18.5 A  | (Ø               |
| 1.5SN BK RL     |                            | THR solder connection,             |               |            |                     | 330              |
|                 |                            | 5.08 mm, No. of poles: 6,          |               |            |                     | mm);             |
|                 |                            | 180°, Solder pin length (l):       |               |            |                     | Rs               |
|                 |                            | 1.5 mm, tinned, Black, Tape        |               |            |                     | =                |
|                 |                            | (Ø 330 mm); Rs = 10 <sup>9</sup> - |               |            |                     | 10 <sup>9</sup>  |
|                 |                            | 10 <sup>12</sup> Ω                 |               |            |                     | -                |
|                 |                            |                                    |               |            |                     | 10 <sup>12</sup> |
|                 |                            |                                    |               |            |                     | Ω                |

**SL-SMT 5.08/270FL Tape**


High-temperature-resistant, straight, open pin header. Packed in box or tape. On tape and with 1.5 mm solder pin, optimised for automatic assembly. 3.2 mm solder pin suitable for reflow and wave soldering. The pin headers provide space for labelling and can be coded. HC = High Current.

**General ordering data**

| Type            | Order No.                  | Version                            | GTIN (EAN)                 | Qty.            | Product data        | Packaging        |
|-----------------|----------------------------|------------------------------------|----------------------------|-----------------|---------------------|------------------|
| SL-SMT          | <a href="#">1877090000</a> | PCB plug-in connector, male        | 4032248467693              | 350 pc(s).      | IEC: 400 V / 27.5 A | Tape             |
| 5.08HC/06/270FL |                            | header, Solder flange, THT/        |                            |                 | UL: 300 V / 18.5 A  | (Ø               |
| 1.5SN BK RL     |                            | THR solder connection,             |                            |                 |                     | 330              |
|                 |                            | 5.08 mm, No. of poles: 6,          |                            |                 |                     | mm);             |
|                 |                            | 270°, Solder pin length (l):       |                            |                 |                     | Rs               |
|                 |                            | 1.5 mm, tinned, Black, Tape        |                            |                 |                     | =                |
|                 |                            | (Ø 330 mm); Rs = 10 <sup>9</sup> - |                            |                 |                     | 10 <sup>9</sup>  |
|                 |                            | 10 <sup>12</sup> Ω                 |                            |                 |                     | -                |
|                 |                            |                                    |                            |                 |                     | 10 <sup>12</sup> |
|                 |                            |                                    |                            |                 |                     | Ω                |
| Discontinued    | 2014-05-20T00:00:00+02:00  | SL-SMT 5.08/06/270FL               | <a href="#">1876690000</a> | PCB plug-in     | 4032248467204       | 350              |
|                 |                            | 3.2SN BK RL                        |                            | connector, male |                     | pc(s).           |
|                 |                            |                                    |                            | header, Solder  |                     |                  |

**OMNIMATE Signal - series BL/SL 5.08  
BLDF 5.08/06/180F SN OR BX**

**Weidmüller Interface GmbH & Co. KG**  
 Klingenbergstraße 16  
 D-32758 Detmold  
 Germany  
 Fon: +49 5231 1429-0  
 Fax: +49 5231 14292083  
 www.weidmueller.com

**Mating connector (fully pluggable)**

flange, THT/THR  
 solder connection,  
 5.08 mm, No. of  
 poles: 6, 270°,  
 Solder pin length  
 (l): 3.2 mm,  
 tinned, Black,  
 Tape (Ø 330 mm);  
 $R_s = 10^9 - 10^{12} \Omega$

**SL-SMT 5.08/180LF Box**


High-temperature-resistant pin header, packed in box or tape. On tape, with 1.5 mm solder pin, optimised for automatic assembly. 3.2 mm solder pin suitable for reflow and wave soldering. The pin headers provide space for labelling and can be coded. HC = High Current.

**General ordering data**

| Type                                     | Order No.                  | Version   | GTIN (EAN)    | Qty.      | Product data                              | Packaging |
|--|----------------------------|---|---------------|-----------|---|-----------|
| SL-SMT<br>5.08HC/06/180LF<br>1.5SN BK BX | <a href="#">1776402001</a> | PCB plug-in connector, male<br>header, Solder flange, THT/<br>THR solder connection,<br>5.08 mm, No. of poles: 6,<br>180°, Solder pin length (l):<br>1.5 mm, tinned, Black, Box | 4032248159185 | 50 pc(s). | IEC: 400 V / 27.5 A<br>UL: 300 V / 18.5 A | Box       |
| SL-SMT<br>5.08HC/06/180LF<br>3.2SN BK BX | <a href="#">1838480000</a> | PCB plug-in connector, male<br>header, Solder flange, THT/<br>THR solder connection,<br>5.08 mm, No. of poles: 6,<br>180°, Solder pin length (l):<br>3.2 mm, tinned, Black, Box | 4032248348541 | 50 pc(s). | IEC: 400 V / 27.5 A<br>UL: 300 V / 18.5 A | Box       |

**OMNIMATE Signal - series BL/SL 5.08  
BLDF 5.08/06/180F SN OR BX**

**Weidmüller Interface GmbH & Co. KG**  
Klingenbergstraße 16  
D-32758 Detmold  
Germany  
Fon: +49 5231 1429-0  
Fax: +49 5231 14292083  
www.weidmueller.com

**Mating connector (fully pluggable)**
**SL-SMT 5.08HC/90F Box**


High-temperature-resistant pin header, packed in box or tape. On tape, with 1.5 mm solder pin, optimised for automatic assembly. 3.2 mm solder pin suitable for reflow and wave soldering. The pin headers provide space for labelling and can be coded. HC = High Current.

**General ordering data**

| Type          | Order No.                  | Version   | GTIN (EAN)    | Qty.      | Product data        | Packaging |
|---------------|----------------------------|---|---------------|-----------|---------------------|-----------|
| SL-SMT        | <a href="#">1837670000</a> | PCB plug-in connector, male   | 4032248347483 | 50 pc(s). | IEC: 400 V / 27.5 A | Box       |
| 5.08HC/06/90F |                            | header, Flange, THT/THR   |               |           | UL: 300 V / 18.5 A  |           |
| 3.2SN BK BX   |                            | solder connection, 5.08 mm, No. of poles: 6, 90°, Solder pin length (l): 3.2 mm, tinned, Black, Box |               |           |                     |           |

**SLF 5.08/180F SN**


Male plug with PUSH IN wire connection and straight outlet direction, when used with BLF 5.08HC as wire-to-wire application for panel feed-through The male plugs provide space for labelling and can be coded.

**General ordering data**

| Type         | Order No.                  | Version   | GTIN (EAN)    | Qty.      | Product data                                    | Packaging |
|--------------|----------------------------|---|---------------|-----------|---|-----------|
| SLF          | <a href="#">1335680000</a> | PCB plug-in connector, male plug, 5.08 mm, No. of poles: 6, 180°, PUSH IN, Clamping range, rated connection, max.: 3.31 mm <sup>2</sup> , Box | 4050118139396 | 42 pc(s). | IEC: 400 V / 25.9 A / 0.2 - 2.5 mm <sup>2</sup> | Box       |
| 5.08/06/180F |                            |   |               |           | UL: 300 V / 14 A / AWG 26 - AWG 12              |           |
| SN OR BX     |                            |   |               |           |   |           |
| SLF          | <a href="#">1336210000</a> | PCB plug-in connector, male plug, 5.08 mm, No. of poles: 6, 180°, PUSH IN, Clamping range, rated connection, max.: 3.31 mm <sup>2</sup> , Box | 4050118139860 | 42 pc(s). | IEC: 400 V / 25.9 A / 0.2 - 2.5 mm <sup>2</sup> | Box       |
| 5.08/06/180F |                            |   |               |           | UL: 300 V / 14 A / AWG 26 - AWG 12              |           |
| SN BK BX     |                            |   |               |           |   |           |

**OMNIMATE Signal - series BL/SL 5.08  
BLDF 5.08/06/180F SN OR BX**

**Weidmüller Interface GmbH & Co. KG**  
Klingenbergstraße 16  
D-32758 Detmold  
Germany  
Fon: +49 5231 1429-0  
Fax: +49 5231 14292083  
www.weidmueller.com

**Mating connector (fully pluggable)**
**SLDV-THR 5.08/180F**


High-temperature resistant, double level, laterally offset, male connector with flange or solder flange. 1.5 mm solder pin is suitable for reflow soldering. 3.2 mm solder pin suitable for reflow and wave soldering. The pin headers provide space for labelling and can be coded.

**General ordering data**

| Type                                    | Order No.                  | Version  | GTIN (EAN)    | Qty.      | Product data                          | Packaging |
|---|----------------------------|--|---------------|-----------|---------------------------------------|-----------|
| SLDV-THR<br>5.08/12/180F<br>1.5SN BK BX | <a href="#">1828930000</a> | PCB plug-in connector, male<br>header, Flange, THT/THR<br>solder connection, 5.08<br>mm, No. of poles: 12, 180°,<br>Solder pin length (l): 1.5<br>mm, tinned, Black, Box | 4032248335626 | 50 pc(s). | IEC: 400 V / 15 A<br>UL: 300 V / 10 A | Box       |
| SLDV-THR<br>5.08/12/180F<br>3.2SN BK BX | <a href="#">1828810000</a> | PCB plug-in connector, male<br>header, Flange, THT/THR<br>solder connection, 5.08<br>mm, No. of poles: 12, 180°,<br>Solder pin length (l): 3.2<br>mm, tinned, Black, Box | 4032248335497 | 50 pc(s). | IEC: 400 V / 15 A<br>UL: 300 V / 10 A | Box       |

**SL-SMT 5.08/270FH Tape**


High-temperature-resistant, straight, open pin header. Packed in box or tape. On tape and with 1.5 mm solder pin, optimised for automatic assembly. 3.2 mm solder pin suitable for reflow and wave soldering. The pin headers provide space for labelling and can be coded. HC = High Current.

**General ordering data**

| Delivery status | Available until           | Type                                | Order No.                  | Version   | GTIN (EAN)    | Qty.          |
|-----------------|---------------------------|-------------------------------------|----------------------------|---|---------------|---------------|
| Discontinued    | 2014-05-20T00:00:00+02:00 | SL-SMT 5.08/06/270FH<br>3.2SN BK RL | <a href="#">1876800000</a> | PCB plug-in<br>connector, male<br>header, Solder<br>flange, THT/THR<br>solder connection,<br>5.08 mm, No. of<br>poles: 6, 270°,<br>Solder pin length<br>(l): 3.2 mm,<br>tinned, Black,<br>Tape (Ø 330 mm);<br>Rs = 10 <sup>9</sup> - 10 <sup>12</sup> Ω | 4032248467334 | 335<br>pc(s). |

**OMNIMATE Signal - series BL/SL 5.08  
BLDF 5.08/06/180F SN OR BX**

**Weidmüller Interface GmbH & Co. KG**  
Klingenbergstraße 16  
D-32758 Detmold  
Germany  
Fon: +49 5231 1429-0  
Fax: +49 5231 14292083  
www.weidmueller.com

**Mating connector (fully pluggable)**

|  |                            |  |   |   |
|--|----------------------------|--|---|---|
| SL-SMT<br>5.08HC/06/270FH<br>1.5SN BK RL | <a href="#">1876960000</a> | PCB plug-in connector, male<br>header, Solder flange, THT/<br>THR solder connection,<br>5.08 mm, No. of poles: 6,<br>270°, Solder pin length (l):<br>1.5 mm, tinned, Black, Tape<br>(Ø 330 mm); Rs = 10 <sup>9</sup> -<br>10 <sup>12</sup> Ω | 4032248467617 335 pc(s).<br>IEC: 400 V / 27.5 A<br>UL: 300 V / 18.5 A | Tape<br>(Ø<br>330<br>mm);<br>Rs<br>=<br>10 <sup>9</sup><br>-<br>10 <sup>12</sup><br>Ω |
|--|----------------------------|--|---|---|

**SLF 5.08/180FI SN**


Male plug with PUSH IN wire connection and straight outlet direction, when used with BLF 5.08HC as wire-to-wire application for panel feed-through The male plugs provide space for labelling and can be coded.

**General ordering data**

| Type                             | Order No.                  | Version  | GTIN (EAN)       | Qty.   | Product data  | Packaging |
|----------------------------------|----------------------------|--|------------------|--------|---|-----------|
| SLF<br>5.08/06/180FI<br>SN OR BX | <a href="#">1336440000</a> | PCB plug-in connector,<br>male plug, 5.08 mm, No.<br>of poles: 6, 180°, PUSH<br>IN, Clamping range, rated<br>connection, max.: 3.31<br>mm <sup>2</sup> , Box | 4050118140514 42 | pc(s). | IEC: 400 V / 25.9 A / 0.2 - 2.5 mm <sup>2</sup><br>UL: 300 V / 14 A / AWG 26 - AWG 12 | Box       |
| SLF<br>5.08/06/180FI<br>SN BK BX | <a href="#">1336090000</a> | PCB plug-in connector,<br>male plug, 5.08 mm, No.<br>of poles: 6, 180°, PUSH<br>IN, Clamping range, rated<br>connection, max.: 3.31<br>mm <sup>2</sup> , Box | 4050118139488 42 | pc(s). | IEC: 400 V / 25.9 A / 0.2 - 2.5 mm <sup>2</sup><br>UL: 300 V / 14 A / AWG 26 - AWG 12 | Box       |

**OMNIMATE Signal - series BL/SL 5.08  
BLDF 5.08/06/180F SN OR BX**

**Weidmüller Interface GmbH & Co. KG**  
Klingenbergstraße 16  
D-32758 Detmold  
Germany  
Fon: +49 5231 1429-0  
Fax: +49 5231 14292083  
www.weidmueller.com

**Mating connector (fully pluggable)**
**SL 5.08HC/90LF**


Pin headers made from glass-fibre-reinforced plastic with 90° wire outlet; optimised for wave soldering. The flange variant (F) can be screwed onto the respective counter piece or the circuit board. There is no need for an extra screw to connect the circuit board when the solder flange (LF) version is used. This also protects the solder points from mechanical strain. All pin headers can be manually coded or ordered pre-coded. HC = High Current.

**General ordering data**

| Type                                | Order No.                  | Version  | GTIN (EAN)    | Qty.      | Product data                            | Packaging |
|-------------------------------------|----------------------------|--|---------------|-----------|---|-----------|
| SL<br>5.08HC/06/90LF<br>3.2SN OR BX | <a href="#">1149510000</a> | PCB plug-in connector, male<br>header, Solder flange, THT<br>solder connection, 5.08<br>mm, No. of poles: 6, 90°,<br>Solder pin length (l): 3.2<br>mm, tinned, Orange, Box | 4032248935895 | 42 pc(s). | IEC: 400 V / 24 A<br>UL: 300 V / 18.5 A | Box       |
| SL<br>5.08HC/06/90LF<br>3.2SN BK BX | <a href="#">1150390000</a> | PCB plug-in connector, male<br>header, Solder flange, THT<br>solder connection, 5.08<br>mm, No. of poles: 6, 90°,<br>Solder pin length (l): 3.2<br>mm, tinned, Black, Box  | 4032248937080 | 42 pc(s). | IEC: 400 V / 24 A<br>UL: 300 V / 18.5 A | Box       |

**SL-SMT 5.08/180F Box**


High-temperature-resistant pin header, packed in box or on tape. On tape, with 1.5 mm solder pin, optimised for automatic assembly. 3.2 mm solder pin suitable for reflow and wave soldering. The pin headers provide space for labelling and can be coded. HC = High Current.

**General ordering data**

| Type                                    | Order No.                  | Version   | GTIN (EAN)    | Qty.      | Product data                              | Packaging |
|---|----------------------------|---|---------------|-----------|---|-----------|
| SL-SMT<br>5.08HC/06/180F<br>3.2SN BK BX | <a href="#">1820610000</a> | PCB plug-in connector, male<br>header, Flange, THT/THR<br>solder connection, 5.08<br>mm, No. of poles: 6, 180°,<br>Solder pin length (l): 3.2<br>mm, tinned, Black, Box | 4032248316571 | 50 pc(s). | IEC: 400 V / 27.5 A<br>UL: 300 V / 18.5 A | Box       |
| SL-SMT<br>5.08HC/06/180F<br>1.5SN BK BX | <a href="#">1837340000</a> | PCB plug-in connector, male<br>header, Flange, THT/THR<br>solder connection, 5.08<br>mm, No. of poles: 6, 180°,   | 4032248345939 | 50 pc(s). | IEC: 400 V / 27.5 A<br>UL: 300 V / 18.5 A | Box       |

**OMNIMATE Signal - series BL/SL 5.08  
BLDF 5.08/06/180F SN OR BX**

**Weidmüller Interface GmbH & Co. KG**  
Klingenbergstraße 16  
D-32758 Detmold  
Germany  
Fon: +49 5231 1429-0  
Fax: +49 5231 14292083  
www.weidmueller.com

**Mating connector (fully pluggable)**

Solder pin length (l): 1.5  
mm, tinned, Black, Box

**SL 5.08HC/180LF**


Pin headers in glass-fibre-reinforced plastic with straight wire outlet; optimised for wave soldering. The flange variant (F) can be screwed onto the respective counter piece or the circuit board. There is no need for an extra screw to connect the circuit board when the solder flange (LF) version is used. This also protects the solder points from mechanical strain. All pin headers can be manually coded or ordered pre-coded. HC = High Current.

**General ordering data**

| Type            | Order No.                  | Version   | GTIN (EAN)    | Qty.      | Product data       | Packaging |
|-----------------|----------------------------|---|---------------|-----------|--------------------|-----------|
| SL              | <a href="#">1149350000</a> | PCB plug-in connector, male   | 4032248932269 | 50 pc(s). | IEC: 400 V / 24 A  | Box       |
| 5.08HC/06/180LF |                            | header, Solder flange, THT  |               |           | UL: 300 V / 18.5 A |           |
| 3.2SN BK BX     |                            | solder connection, 5.08 mm, No. of poles: 6, 180°, Solder pin length (l): 3.2 mm, tinned, Black, Box  |               |           |                    |           |
| SL              | <a href="#">1148020000</a> | PCB plug-in connector, male   | 4032248931200 | 50 pc(s). | IEC: 400 V / 24 A  | Box       |
| 5.08HC/06/180LF |                            | header, Solder flange, THT  |               |           | UL: 300 V / 18.5 A |           |
| 3.2SN OR BX     |                            | solder connection, 5.08 mm, No. of poles: 6, 180°, Solder pin length (l): 3.2 mm, tinned, Orange, Box |               |           |                    |           |

**SL 5.08HC/90F**


Pin headers made from glass-fibre-reinforced plastic with 90° wire outlet; optimised for wave soldering. The flange variant (F) can be screwed onto the respective counter piece or the circuit board. There is no need for an extra screw to connect the circuit board when the solder flange (LF) version is used. This also protects the solder points from mechanical strain. All pin headers can be manually coded or ordered pre-coded. HC = High Current.

**General ordering data**

| Type          | Order No.                  | Version   | GTIN (EAN)    | Qty.      | Product data       | Packaging |
|---------------|----------------------------|---|---------------|-----------|--------------------|-----------|
| SL            | <a href="#">1148740000</a> | PCB plug-in connector, male   | 4032248935789 | 42 pc(s). | IEC: 400 V / 24 A  | Box       |
| 5.08HC/06/90F |                            | header, Flange, THT solder  |               |           | UL: 300 V / 18.5 A |           |
| 3.2SN OR BX   |                            | connection, 5.08 mm, No. of poles: 6, 90°, Solder pin length (l): 3.2 mm, tinned, Orange, Box |               |           |                    |           |
| SL            | <a href="#">1150130000</a> | PCB plug-in connector, male   | 4032248936748 | 42 pc(s). | IEC: 400 V / 24 A  | Box       |
| 5.08HC/06/90F |                            | header, Flange, THT solder  |               |           | UL: 300 V / 18.5 A |           |
| 3.2SN BK BX   |                            | connection, 5.08 mm, No.  |               |           |                    |           |

Creation date January 1, 2018 4:04:39 PM CET

**OMNIMATE Signal - series BL/SL 5.08  
BLDF 5.08/06/180F SN OR BX**

**Weidmüller Interface GmbH & Co. KG**  
Klingenbergstraße 16  
D-32758 Detmold  
Germany  
Fon: +49 5231 1429-0  
Fax: +49 5231 14292083  
www.weidmuller.com

**Mating connector (fully pluggable)**

of poles: 6, 90°, Solder pin  
length (l): 3.2 mm, tinned,  
Black, Box

**SL-SMT 5.08/270FL Box**


High-temperature-resistant, straight, open pin header. Packed in box or tape. On tape and with 1.5 mm solder pin, optimised for automatic assembly. 3.2 mm solder pin suitable for reflow and wave soldering. The pin headers provide space for labelling and can be coded. HC = High Current.

**General ordering data**

| Type   | Order No.                  | Version  | GTIN (EAN)    | Qty.      | Product data  | Packaging |
|--|----------------------------|--|---------------|-----------|---|-----------|
| SL-SMT<br>5.08HC/06/270FL<br>1.5SN BK BX                     | <a href="#">1878140000</a> | PCB plug-in connector, male<br>header, Solder flange, THT/<br>THR solder connection,<br>5.08 mm, No. of poles: 6,<br>270°, Solder pin length (l):<br>1.5 mm, tinned, Black, Box            | 4032248468942 | 50 pc(s). | IEC: 400 V / 27.5 A<br>UL: 300 V / 18.5 A                         | Box       |
| 2010-05-31T06:00:00<br>SL-SMT 5.08HC/06/270FL<br>3.2SN BK BX | <a href="#">1876890000</a> | PCB plug-in<br>connector, male<br>header, Solder<br>flange, THT/THR<br>solder connection,<br>5.08 mm, No. of<br>poles: 6, 270°,<br>Solder pin length<br>(l): 3.2 mm,<br>tinned, Black, Box | 4032248467471 | 50 pc(s). | IEC:<br>400<br>V /<br>27.5<br>A<br>UL:<br>300<br>V /<br>18.5<br>A |           |

**SL 5.08HC/180F**


Pin headers in glass-fibre-reinforced plastic with straight wire outlet; optimised for wave soldering. The flange variant (F) can be screwed onto the respective counter piece or the circuit board. There is no need for an extra screw to connect the circuit board when the solder flange (LF) version is used. This also protects the solder points from mechanical strain. All pin headers can be manually coded or ordered pre-coded. HC = High Current.

**General ordering data**

| Type                                | Order No.                  | Version  | GTIN (EAN)    | Qty.      | Product data                            | Packaging |
|-------------------------------------|----------------------------|--|---------------|-----------|---|-----------|
| SL<br>5.08HC/06/180F<br>3.2SN OR BX | <a href="#">1147260000</a> | PCB plug-in connector, male<br>header, Flange, THT solder<br>connection, 5.08 mm, No.<br>of poles: 6, 180°, Solder pin | 4032248931347 | 50 pc(s). | IEC: 400 V / 24 A<br>UL: 300 V / 18.5 A | Box       |

## OMNIMATE Signal - series BL/SL 5.08 BLDF 5.08/06/180F SN OR BX

**Weidmüller Interface GmbH & Co. KG**  
 Klingenbergstraße 16  
 D-32758 Detmold  
 Germany  
 Fon: +49 5231 1429-0  
 Fax: +49 5231 14292083  
 www.weidmueller.com

### Mating connector (fully pluggable)

|                |                            |  |               |   |
|----------------|----------------------------|--|---------------|---|
|                |                            | length (l): 3.2 mm, tinned,<br>Orange, Box   |               |   |
| SL             | <a href="#">1148590000</a> | PCB plug-in connector, male  | 4032248931941 | 50 pc(s), IEC: 400 V / 24 A<br>UL: 300 V / 18.5 A |
| 5.08HC/06/180F |                            | header, Flange, THT solder   |               |   |
| 3.2SN BK BX    |                            | connection, 5.08 mm, No.<br>of poles: 6, 180°, Solder pin<br>length (l): 3.2 mm, tinned,<br>Black, Box |               |   |

### SL-SMT 5.08/270FH Box



High-temperature-resistant, straight, open pin header. Packed in box or tape. On tape and with 1.5 mm solder pin, optimised for automatic assembly. 3.2 mm solder pin suitable for reflow and wave soldering. The pin headers provide space for labelling and can be coded. HC = High Current.

### General ordering data

| Delivery status | Available until            | Type  | Order No.                  | Version  | GTIN (EAN)    | Qty.        |
|-----------------|----------------------------|---|----------------------------|--|---------------|-------------|
| Discontinued    | 2014-05-20T00:00:00+02:00  | SL-SMT 5.08/06/270FH<br>1.5SN BK BX   | <a href="#">1878000000</a> | PCB plug-in<br>connector, male<br>header, Solder<br>flange, THT/THR<br>solder connection,<br>5.08 mm, No. of<br>poles: 6, 270°,<br>Solder pin length<br>(l): 1.5 mm,<br>tinned, Black, Box | 4032248468751 | 50<br>pc(s) |
| SL-SMT          | <a href="#">1877460000</a> | PCB plug-in connector, male   | 4032248468089              | 50 pc(s), IEC: 400 V / 27.5 A<br>UL: 300 V / 18.5 A  |               | Box         |
| 5.08HC/06/270FH |                            | header, Solder flange, THT/<br>THR solder connection,                                   |                            |  |               |             |
| 3.2SN BK BX     |                            | 5.08 mm, No. of poles: 6,<br>270°, Solder pin length (l):<br>3.2 mm, tinned, Black, Box |                            |  |               |             |

**OMNIMATE Signal - series BL/SL 5.08  
BLDF 5.08/06/180F SN OR BX**

**Weidmüller Interface GmbH & Co. KG**  
Klingenbergstraße 16  
D-32758 Detmold  
Germany  
Fon: +49 5231 1429-0  
Fax: +49 5231 14292083  
www.weidmueller.com

**Mating connector (fully pluggable)**
**SLS 5.08/180FI**


Male plugs with clamping-yoke screw wire-connect system. The male plugs provide space for labelling and can be coded.

**General ordering data**

| Type                             | Order No.                  | Version  | GTIN (EAN)    | Qty.      | Product data  | Packaging |
|----------------------------------|----------------------------|--|---------------|-----------|---|-----------|
| SLS<br>5.08/06/180FI<br>SN OR BX | <a href="#">1846250000</a> | PCB plug-in connector,<br>male plug, 5.08 mm, No.<br>of poles: 6, 180°, Clamping<br>yoke connection, Clamping<br>range, rated connection,<br>max.: 3.31 mm², Box | 4032248362530 | 42 pc(s). | IEC: 400 V / 21.5 A / 0.2 - 2.5 mm²<br>UL: 300 V / 14 A / AWG 26 - AWG 12 | Box       |

**SLDV-THR 5.08/180FLF**


High-temperature resistant, double level, laterally offset, male connector with flange or solder flange. 1.5 mm solder pin is suitable for reflow soldering. 3.2 mm solder pin suitable for reflow and wave soldering. The pin headers provide space for labelling and can be coded.

**General ordering data**

| Delivery status | Available until            | Type   | Order No.                  | Version   | GTIN (EAN)                            | Qty.         |
|-----------------|----------------------------|--|----------------------------|---|---------------------------------------|--------------|
| Discontinued    | 2014-05-20T00:00:00+02:00  | SLDV-THR<br>5.08/12/180FLF 1.5SN<br>BK BX  | <a href="#">1829170000</a> | PCB plug-in<br>connector, male<br>header, Flange /<br>Solder flange,<br>THT/THR solder<br>connection, 5.08<br>mm, No. of poles:<br>12, 180°, Solder<br>pin length (!): 1.5<br>mm, tinned, Black,<br>Box | 4032248335862                         | 50<br>pc(s). |
| SLDV-THR        | <a href="#">1829050000</a> | PCB plug-in connector, male<br>header, Flange / Solder<br>flange, THT/THR solder<br>connection, 5.08 mm, No.<br>of poles: 12, 180°, Solder | 4032248335749              | 50 pc(s).   | IEC: 400 V / 15 A<br>UL: 300 V / 10 A | Box          |

**OMNIMATE Signal - series BL/SL 5.08  
BLDF 5.08/06/180F SN OR BX**

**Weidmüller Interface GmbH & Co. KG**  
Klingenbergstraße 16  
D-32758 Detmold  
Germany  
Fon: +49 5231 1429-0  
Fax: +49 5231 14292083  
www.weidmueller.com

**Mating connector (fully pluggable)**

pin length (l): 3.2 mm,  
tinned, Black, Box

**SL-SMT 5.08HC/90LF Tape**


High-temperature-resistant pin header, packed in box or tape. On tape, with 1.5 mm solder pin, optimised for automatic assembly. 3.2 mm solder pin suitable for reflow and wave soldering. The pin headers provide space for labelling and can be coded. HC = High Current.

**General ordering data**

| Type           | Order No.                  | Version   | GTIN (EAN)    | Qty.       | Product data        | Packaging        |
|----------------|----------------------------|---|---------------|------------|---------------------|------------------|
| SL-SMT         | <a href="#">1775274001</a> | PCB plug-in connector, male                       | 4032248167838 | 350 pc(s). | IEC: 400 V / 27.5 A | Tape             |
| 5.08HC/06/90LF |                            | header, Solder flange, THT/THR solder connection, |               |            | UL: 300 V / 18.5 A  | (Ø 330 mm);      |
| 1.5SN BK RL    |                            | 5.08 mm, No. of poles: 6,                         |               |            |                     | 330 mm);         |
|                |                            | 90°, Solder pin length (l):                       |               |            |                     | Rs               |
|                |                            | 1.5 mm, tinned, Black, Tape                       |               |            |                     | =                |
|                |                            | (Ø 330 mm); Rs = 10 <sup>9</sup> -                |               |            |                     | 10 <sup>9</sup>  |
|                |                            | 10 <sup>12</sup> Ω                                |               |            |                     | -                |
|                |                            |   |               |            |                     | 10 <sup>12</sup> |
|                |                            |   |               |            |                     | Ω                |

**SL-SMT 5.08HC/90LF Box**


High-temperature-resistant pin header, packed in box or tape. On tape, with 1.5 mm solder pin, optimised for automatic assembly. 3.2 mm solder pin suitable for reflow and wave soldering. The pin headers provide space for labelling and can be coded. HC = High Current.

**General ordering data**

| Delivery status | Available until           | Type                  | Order No.                  | Version            | GTIN (EAN)    | Qty.   |
|-----------------|---------------------------|-----------------------|----------------------------|--------------------|---------------|--------|
| Discontinued    | 2016-04-08T00:00:00+02:00 | SL-SMT 5.08HC/06/90LF | <a href="#">1775272001</a> | PCB plug-in        | 4032248157259 | 50     |
|                 |                           | 1.5SN BK BX           |                            | connector, male    |               | pc(s). |
|                 |                           |                       |                            | header, Solder     |               |        |
|                 |                           |                       |                            | flange, THT/THR    |               |        |
|                 |                           |                       |                            | solder connection, |               |        |
|                 |                           |                       |                            | 5.08 mm, No.       |               |        |
|                 |                           |                       |                            | of poles: 6, 90°,  |               |        |
|                 |                           |                       |                            | Solder pin length  |               |        |
|                 |                           |                       |                            | (l): 1.5 mm,       |               |        |
|                 |                           |                       |                            | tinned, Black, Box |               |        |

**Data sheet**

**OMNIMATE Signal - series BL/SL 5.08  
BLDF 5.08/06/180F SN OR BX**

**Weidmüller Interface GmbH & Co. KG**  
Klingenbergstraße 16  
D-32758 Detmold  
Germany  
Fon: +49 5231 1429-0  
Fax: +49 5231 14292083  
www.weidmueller.com

**Mating connector (fully pluggable)**

|   |                            |  |  |     |
|---|----------------------------|--|--|-----|
| SL-SMT<br>5.08HC/06/90LF<br>3.2SN BK BX | <a href="#">1780450000</a> | PCB plug-in connector, male<br>header, Solder flange, THT/<br>THR solder connection,<br>5.08 mm, No. of poles: 6,<br>90°, Solder pin length (l):<br>3.2 mm, tinned, Black, Box | 4032248165773 50 pc(s).<br>IEC: 400 V / 27.5 A<br>UL: 300 V / 18.5 A | Box |
|---|----------------------------|--|--|-----|

**SLS 5.08/180F**



Male plugs with clamping-yoke screw wire-connect system. The male plugs provide space for labelling and can be coded.

**General ordering data**

| Type                            | Order No.                  | Version   | GTIN (EAN)              | Qty. | Product data  | Packaging |
|---------------------------------|----------------------------|---|-------------------------|------|---|-----------|
| SLS<br>5.08/06/180F<br>SN OR BX | <a href="#">1846400000</a> | PCB plug-in connector,<br>male plug, 5.08 mm, No.<br>of poles: 6, 180°, Clamping<br>yoke connection, Clamping<br>range, rated connection,<br>max.: 3.31 mm <sup>2</sup> , Box | 4032248362103 42 pc(s). |      | IEC: 400 V / 21.5 A / 0.2 - 2.5 mm <sup>2</sup><br>UL: 300 V / 14 A / AWG 26 - AWG 12 | Box       |