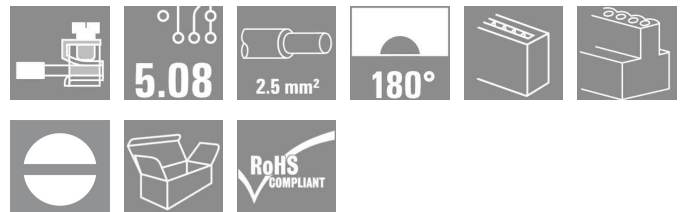
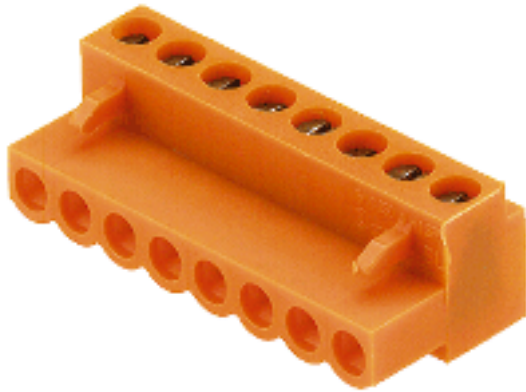


## OMNIMATE Signal - series BL/SL 5.08 BL 5.08/16/180 SN OR BX

**Weidmüller Interface GmbH & Co. KG**  
Klingenbergstraße 16  
D-32758 Detmold  
Germany  
Fon: +49 5231 14-0  
Fax: +49 5231 14-292083  
www.weidmueller.com



Female plugs with leaf-spring wire connection system.

The female plugs provide space for labelling.

- 0.2 - 1.5 mm<sup>2</sup> (IEC) / 26 - 14 AWG (UL)
- 400 V (IEC) / 300 V (UL)
- 11 A (IEC) / 10 A (UL)

### General ordering data

|              |  |
|--------------|--|
| Type         | BL 5.08/16/180 SN OR BX  |
| Order No.    | <a href="#">1716460000</a>   |
| Version      | PCB plug-in connector, female plug, 5.08 mm, No. of poles: 16, 180°, Pressure clamp connection, Clamping range, rated connection, max.: 2.08 mm <sup>2</sup> , Box |
| GTIN (EAN)   | 4008190376505  |
| Qty.         | 50 pc(s).  |
| Product data | IEC: 400 V / 14 A / 0.2 - 1.5 mm <sup>2</sup><br>UL: 300 V / 10 A / AWG 26 - AWG 14  |
| Packaging    | Box  |

Creation date January 6, 2014 7:30:17 AM CET

**OMNIMATE Signal - series BL/SL 5.08  
BL 5.08/16/180 SN OR BX**

**Weidmüller Interface GmbH & Co. KG**  
Klingenbergstraße 16  
D-32758 Detmold  
Germany  
Fon: +49 5231 14-0  
Fax: +49 5231 14-292083  
www.weidmueller.com

**Technical data****Dimensions and weights**

|            |         |
|------------|---------|
| Net weight | 22.66 g |
|------------|---------|

**System parameters**

|  |                                     |                            |                           |
|--|-------------------------------------|----------------------------|---------------------------|
| Product family                             | OMNIMATE Signal - series BL/SL 5.08 | Wire connection method     | Pressure clamp connection |
| Conductor outlet direction                 | 180°                                | Pitch in mm (P)            | 5.08 mm                   |
| Pitch in inches (P)                        | 0.2 inch                            | No. of poles               | 16                        |
| Screwdriver blade                          | 0.6 x 3.5                           | Screwdriver blade standard | DIN 5264                  |
| Tightening torque, min.                    | 0.4 Nm                              | Tightening torque, max.    | 0.5 Nm                    |
| Clamping screw                             | M 2.5                               | Stripping length           | 6 mm                      |
| L1 in mm                                   | 76.2 mm                             | L1 in inches               | 3 inch                    |
| Touch-safe protection acc. to DIN VDE 0470 | IP 00                               |                            |                           |

**Material data**

|                        |          |                           |        |
|------------------------|----------|---------------------------|--------|
| Insulating material    | PA       | Colour                    | Orange |
| Colour chart (similar) | RAL 2000 | UL 94 flammability rating | V-2    |
| CTI                    | ≥ 600    | Contact material          | CuSn   |
| Contact surface        | tinned   |                           |        |

**Connectable conductors**

|   |                      |   |                      |
|---|----------------------|---|----------------------|
| Clamping range, rated connection, min.          | 0.13 mm <sup>2</sup> | Clamping range, rated connection, max.          | 2.08 mm <sup>2</sup> |
| Wire connection cross section AWG, min.         | AWG 26               | Wire connection cross section AWG, max.         | AWG 14               |
| Solid, min. H05(07) V-U                         | 0.2 mm <sup>2</sup>  | Solid, max. H05(07) V-U                         | 1.5 mm <sup>2</sup>  |
| Flexible, min. H05(07) V-K                      | 0.2 mm <sup>2</sup>  | Flexible, max. H05(07) V-K                      | 1.5 mm <sup>2</sup>  |
| w. wire end ferrule, DIN 46228 pt 1, min.       | 0.2 mm <sup>2</sup>  | w. wire end ferrule, DIN 46228 pt 1, max.       | 1.5 mm <sup>2</sup>  |
| w. plastic collar ferrule, DIN 46228 pt 4, min. | 0.2 mm <sup>2</sup>  | w. plastic collar ferrule, DIN 46228 pt 4, max. | 1 mm <sup>2</sup>    |
| Plug gauge acc. to EN 60999 a x b; Ø            | 2.4 mm x 1.5 mm      |   |                      |

**DIN IEC rating data**

|  |       |  |       |
|--|-------|--|-------|
| Rated current, min. no. of poles (Tu=20°C)                           | 14 A  | Rated current, max. no. of poles (Tu=20°C)                               | 12 A  |
| Rated current, number of poles (Tu=40°C), min                        | 12 A  | Rated current, number of poles (Tu=40°C), max.                           | 10 A  |
| Rated voltage for surge voltage class pollution degree II/2          | 400 V | Rated voltage for surge voltage class pollution degree III/2             | 320 V |
| Rated voltage for surge voltage class pollution degree III/3         | 250 V | Rated impulse voltage for surge voltage class pollution degree II/2      | 4 kV  |
| Rated impulse voltage for surge voltage class pollution degree III/2 | 4 kV  | Rated impulse voltage for surge voltage class contamination degree III/3 | 4 kV  |

**Data sheet**

**OMNIMATE Signal - series BL/SL 5.08  
BL 5.08/16/180 SN OR BX**

**Weidmüller Interface GmbH & Co. KG**  
Klingenbergstraße 16  
D-32758 Detmold  
Germany  
Fon: +49 5231 14-0  
Fax: +49 5231 14-292083  
www.weidmueller.com

**Technical data**

**CSA rating data**

Institute (CSA)



Rated voltage (Use group B)

300 V

|                               |        |
|-------------------------------|--------|
| Rated current (use group B)   | 10 A   |
| Rated current (use group D)   | 10 A   |
| Wire cross-section, AWG, max. | AWG 14 |

|                               |        |
|-------------------------------|--------|
| Rated voltage (use group D)   | 300 V  |
| Wire cross-section, AWG, min. | AWG 26 |

**UL 1059 rating data**

Institute (UR)



Rated voltage (use group B)

300 V

|                               |        |
|-------------------------------|--------|
| Rated current (use group B)   | 10 A   |
| Rated current (use group D)   | 10 A   |
| Wire cross-section, AWG, max. | AWG 14 |

|                               |        |
|-------------------------------|--------|
| Rated voltage (use group D)   | 300 V  |
| Wire cross-section, AWG, min. | AWG 26 |

**Classifications**

|            |             |            |             |
|------------|-------------|------------|-------------|
| ETIM 3.0   | EC001284    | UNSPSC     | 30-21-18-10 |
| eClass 5.1 | 27-26-07-04 | eClass 6.2 | 27-26-07-04 |
| eClass 7.1 | 27-44-04-02 |            |             |

**Notes**

Notes

- Additional colours on request
- Gold-plated contact surfaces on request
- Rated current related to rated cross-section & min. No. of poles.
- Wire end ferrule without plastic collar to DIN 46228/1
- Wire end ferrule with plastic collar to DIN 46228/4
- P on drawing = pitch
- Do not tighten screws in inserted condition
- Rated data refer only to the component itself. Clearance and creepage distances to other components are to be designed in accordance with the relevant application standards.

**Approvals**

Approvals

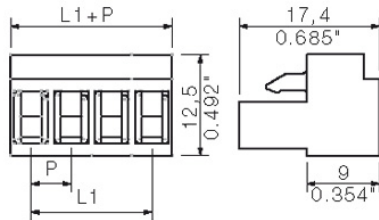


ROHS

Conform

**Data sheet****OMNIMATE Signal - series BL/SL 5.08  
BL 5.08/16/180 SN OR BX**

**Weidmüller Interface GmbH & Co. KG**  
Klingenbergstraße 16  
D-32758 Detmold  
Germany  
Fon: +49 5231 14-0  
Fax: +49 5231 14-292083  
[www.weidmueller.com](http://www.weidmueller.com)

**Drawings**

**OMNIMATE Signal - series BL/SL 5.08  
BL 5.08/16/180 SN OR BX**

**Weidmüller Interface GmbH & Co. KG**  
Klingenbergstraße 16  
D-32758 Detmold  
Germany  
Fon: +49 5231 14-0  
Fax: +49 5231 14-292083  
www.weidmueller.com

**Mating connector (conditionally pluggable)**
**SL-SMT 5.08/90F Box**


High-temperature-resistant male header, packed in box or tape. In tape with 1.5 mm solder pin optimised for automatic assembly. 3.2 mm solder pin suitable for reflow and wave soldering. These male connectors provide space for labelling and can be coded.

- 400 V (IEC) / 300 V (UL)
- 19 A (IEC) / 15 A (UL)

**General ordering data**

| Type        | Order No.                  | Version  | GTIN (EAN)    | Qty.      | Product data                          | Packaging |
|-------------|----------------------------|--|---------------|-----------|---------------------------------------|-----------|
| SL-SMT      | <a href="#">1837770000</a> | PCB plug-in connector, male  | 4032248347582 | 50 pc(s). | IEC: 400 V / 19 A<br>UL: 300 V / 15 A | Box       |
| 5.08/16/90F |                            | header, Flange, Reflow   |               |           |                                       |           |
| 3.2SN BK BX |                            | solder connection, 5.08 mm, No. of poles: 16, 90°, Solder pin length (l): 3.2 mm, tinned, Black, Box |               |           |                                       |           |

**SL 5.08/135B**


Male connectors with 135° outlet direction. The solder pin length is optimised for wave flow soldering. The pin headers provide space for labelling and can be coded.

- 400 V (IEC) / 300 V (UL)
- 17 A (IEC) / 15 A (UL)

**General ordering data**

| Type         | Order No.                  | Version  | GTIN (EAN)    | Qty.      | Product data                          | Packaging |
|--------------|----------------------------|--|---------------|-----------|---------------------------------------|-----------|
| SL           | <a href="#">1605670000</a> | PCB plug-in connector, male  | 4008190153816 | 50 pc(s). | IEC: 400 V / 17 A<br>UL: 300 V / 15 A | Box       |
| 5.08/16/135B |                            | header, Dovetails for fixing   |               |           |                                       |           |
| 3.2SN OR BX  |                            | blocks, Solder connection, 5.08 mm, No. of poles: 16, 135°, Solder pin length (l): 3.2 mm, tinned, Orange, Box |               |           |                                       |           |

**OMNIMATE Signal - series BL/SL 5.08  
BL 5.08/16/180 SN OR BX**

**Weidmüller Interface GmbH & Co. KG**  
Klingenbergstraße 16  
D-32758 Detmold  
Germany  
Fon: +49 5231 14-0  
Fax: +49 5231 14-292083  
www.weidmueller.com

**Mating connector (conditionally pluggable)**
**SL-SMT 5.08/90LF Box**


High-temperature-resistant male header, packed in box or tape. In tape with 1.5 mm solder pin optimised for automatic assembly. 3.2 mm solder pin suitable for reflow and wave soldering. These male connectors provide space for labelling and can be coded.

- 400 V (IEC) / 300 V (UL)
- 19 A (IEC) / 15 A (UL)

**General ordering data**

| Type                                  | Order No.                  | Version   | GTIN (EAN)    | Qty.      | Product data                          | Packaging |
|---------------------------------------|----------------------------|---|---------------|-----------|---------------------------------------|-----------|
| SL-SMT<br>5.08/16/90LF<br>1.5SN BK BX | <a href="#">1775372001</a> | PCB plug-in connector,<br>male header, Solder flange,<br>Reflow solder connection,<br>5.08 mm, No. of poles: 16,<br>90°, Solder pin length (l):<br>1.5 mm, tinned, Black, Box | 4032248157358 | 50 pc(s). | IEC: 400 V / 19 A<br>UL: 300 V / 15 A | Box       |
| SL-SMT<br>5.08/16/90LF<br>3.2SN BK BX | <a href="#">1780570000</a> | PCB plug-in connector,<br>male header, Solder flange,<br>Reflow solder connection,<br>5.08 mm, No. of poles: 16,<br>90°, Solder pin length (l):<br>3.2 mm, tinned, Black, Box | 4032248165872 | 50 pc(s). | IEC: 400 V / 19 A<br>UL: 300 V / 15 A | Box       |

**SLS 5.08/180FI**


Male plugs with clamping-yoke screw wire-connect system. The male plugs provide space for labelling and can be coded.

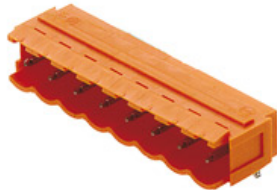
- 0.2 - 2.5 mm<sup>2</sup> (IEC) / 26 - 12 AWG (UL)
- 400 V (IEC) / 300 V (UL)
- 21.5 A (IEC) / 15 A (UL)

**General ordering data**

| Type                             | Order No.                  | Version  | GTIN (EAN)    | Qty.      | Product data  | Packaging |
|----------------------------------|----------------------------|--|---------------|-----------|---|-----------|
| SLS<br>5.08/16/180FI<br>SN OR BX | <a href="#">1846350000</a> | PCB plug-in connector,<br>male plug, 5.08 mm, No. of<br>poles: 16, 180°, Clamping<br>yoke connection, Clamping<br>range, rated connection,<br>max.: 3.31 mm <sup>2</sup> , Box | 4032248362639 | 18 pc(s). | IEC: 400 V / 21.5 A / 0.2 - 2.5 mm <sup>2</sup><br>UL: 300 V / 14 A / AWG 26 - AWG 12 | Box       |

**OMNIMATE Signal - series BL/SL 5.08  
BL 5.08/16/180 SN OR BX**

**Weidmüller Interface GmbH & Co. KG**  
Klingenbergstraße 16  
D-32758 Detmold  
Germany  
Fon: +49 5231 14-0  
Fax: +49 5231 14-292083  
www.weidmueller.com

**Mating connector (conditionally pluggable)**
**SL 5.08/90B**


Male connectors with 90° outlet direction. The solder pin length is optimised for wave flow soldering. The pin headers provide space for labelling and can be coded.

- 400 V (IEC) / 300 V (UL)
- 18 A (IEC) / 15 A (UL)

**General ordering data**

| Type        | Order No.                  | Version   | GTIN (EAN)    | Qty.      | Product data      | Packaging |
|-------------|----------------------------|---|---------------|-----------|-------------------|-----------|
| SL          | <a href="#">1511760000</a> | PCB plug-in connector, male   | 4008190020552 | 50 pc(s). | IEC: 400 V / 18 A | Box       |
| 5.08/16/90B |                            | header, Dovetails for fixing  |               |           | UL: 300 V / 15 A  |           |
| 3.2SN OR BX |                            | blocks, Solder connection,<br>5.08 mm, No. of poles: 16,<br>Solder pin length (l): 3.2<br>mm, tinned, Orange, Box |               |           |                   |           |

**SLS 5.08/180F**


Male plugs with clamping-yoke screw wire-connect system. The male plugs provide space for labelling and can be coded.

- 0.2 - 2.5 mm<sup>2</sup> (IEC) / 26 - 12 AWG (UL)
- 400 V (IEC) / 300 V (UL)
- 21.5 A (IEC) / 15 A (UL)

**General ordering data**

| Type         | Order No.                  | Version  | GTIN (EAN)    | Qty.      | Product data                                    | Packaging |
|--------------|----------------------------|--|---------------|-----------|---|-----------|
| SLS          | <a href="#">1846500000</a> | PCB plug-in connector,   | 4032248362806 | 18 pc(s). | IEC: 400 V / 21.5 A / 0.2 - 2.5 mm <sup>2</sup> | Box       |
| 5.08/16/180F |                            | male plug, 5.08 mm, No. of   |               |           | UL: 300 V / 14 A / AWG 26 - AWG 12              |           |
| SN OR BX     |                            | poles: 16, 180°, Clamping<br>yoke connection, Clamping<br>range, rated connection,<br>max.: 3.31 mm <sup>2</sup> , Box |               |           |   |           |

**OMNIMATE Signal - series BL/SL 5.08  
BL 5.08/16/180 SN OR BX**

**Weidmüller Interface GmbH & Co. KG**  
Klingenbergstraße 16  
D-32758 Detmold  
Germany  
Fon: +49 5231 14-0  
Fax: +49 5231 14-292083  
www.weidmueller.com

**Mating connector (conditionally pluggable)**
**SLZF 5.08/180B**


Male plugs with tension-clamp wire connection. The male plugs provide space for labelling and can be coded.

- 0.2 - 2.5 mm<sup>2</sup> (IEC) / 26 - 14 AWG (UL)
- 400 V (IEC) / 300 V (UL)
- 23 A (IEC) / 15 A (UL)

**General ordering data**

| Type                             | Order No.                  | Version   | GTIN (EAN)    | Qty.      | Product data  | Packaging |
|----------------------------------|----------------------------|---|---------------|-----------|---|-----------|
| SLZF<br>5.08/16/180B<br>SN OR BX | <a href="#">1710350000</a> | PCB plug-in connector,<br>male plug, 5.08 mm,<br>No. of poles: 16, 180°,<br>Tension clamp connection,<br>Clamping range, rated<br>connection, max.: 3.31<br>mm <sup>2</sup> , Box | 4008190319663 | 50 pc(s). | IEC: 400 V / 23 A / 0.2 - 2.5 mm <sup>2</sup><br>UL: 300 V / 15 A / AWG 26 - AWG 12 | Box       |

**SLZF 5.08/90B**


Male plugs with tension-clamp wire connection. The male plugs provide space for labelling and can be coded.

- 0.2 - 2.5 mm<sup>2</sup> (IEC) / 26 - 14 AWG (UL)
- 400 V (IEC) / 300 V (UL)
- 23 A (IEC) / 15 A (UL)

**General ordering data**

| Type                            | Order No.                  | Version  | GTIN (EAN)    | Qty.      | Product data  | Packaging |
|---------------------------------|----------------------------|--|---------------|-----------|---|-----------|
| SLZF<br>5.08/16/90B<br>SN OR BX | <a href="#">1673690000</a> | PCB plug-in connector,<br>male plug, 5.08 mm,<br>No. of poles: 16, 90°,<br>Tension clamp connection,<br>Clamping range, rated<br>connection, max.: 3.31<br>mm <sup>2</sup> , Box | 4008190435400 | 50 pc(s). | IEC: 400 V / 20.5 A / 0.2 - 2.5 mm <sup>2</sup><br>UL: 300 V / 15 A / AWG 26 - AWG 12 | Box       |

**OMNIMATE Signal - series BL/SL 5.08  
BL 5.08/16/180 SN OR BX**

**Weidmüller Interface GmbH & Co. KG**  
Klingenbergstraße 16  
D-32758 Detmold  
Germany  
Fon: +49 5231 14-0  
Fax: +49 5231 14-292083  
www.weidmueller.com

**Mating connector (conditionally pluggable)**
**SLS 5.08/180B**


Male plugs with clamping-yoke screw wire-connect system. The male plugs provide space for labelling and can be coded.

- 0.2 - 2.5 mm<sup>2</sup> (IEC) / 26 - 12 AWG (UL)
- 400 V (IEC) / 300 V (UL)
- 21.5 A (IEC) / 15 A (UL)

**General ordering data**

| Type                            | Order No.                  | Version  | GTIN (EAN)    | Qty.      | Product data  | Packaging |
|---------------------------------|----------------------------|--|---------------|-----------|---|-----------|
| SLS<br>5.08/16/180B<br>SN OR BX | <a href="#">1627380000</a> | PCB plug-in connector,<br>male plug, 5.08 mm, No. of<br>poles: 16, 180°, Clamping<br>yoke connection, Clamping<br>range, rated connection,<br>max.: 3.31 mm <sup>2</sup> , Box | 4008190199890 | 18 pc(s). | IEC: 400 V / 21.5 A / 0.2 - 2.5 mm <sup>2</sup><br>UL: 300 V / 14 A / AWG 26 - AWG 12 | Box       |

**SL-SMT 5.08/180F Box**


High-temperature-resistant male header, packed in box or tape. In tape with 1.5 mm solder pin optimised for automatic assembly. 3.2 mm solder pin suitable for reflow and wave soldering. These male connectors provide space for labelling and can be coded.

- 400 V (IEC) / 300 V (UL)
- 19 A (IEC) / 15 A (UL)

**General ordering data**

| Type                                  | Order No.                  | Version   | GTIN (EAN)    | Qty.      | Product data                          | Packaging |
|---------------------------------------|----------------------------|---|---------------|-----------|---------------------------------------|-----------|
| SL-SMT<br>5.08/16/180F<br>3.2SN BK BX | <a href="#">1820640000</a> | PCB plug-in connector, male<br>header, Flange, Reflow<br>solder connection, 5.08<br>mm, No. of poles: 16, 180°,<br>Solder pin length (l): 3.2<br>mm, tinned, Black, Box | 4032248316601 | 50 pc(s). | IEC: 400 V / 19 A<br>UL: 300 V / 15 A | Box       |

**OMNIMATE Signal - series BL/SL 5.08  
BL 5.08/16/180 SN OR BX**

**Weidmüller Interface GmbH & Co. KG**  
Klingenbergstraße 16  
D-32758 Detmold  
Germany  
Fon: +49 5231 14-0  
Fax: +49 5231 14-292083  
www.weidmueller.com

**Mating connector (conditionally pluggable)**
**SLT 5.08B**


Male plugs with screw TOP wire connection. The male plug provides space for labelling and can be coded.

- 0.2 - 2.5 mm<sup>2</sup> (IEC) / 26 - 14 AWG (UL)
- 400 V (IEC) / 300 V (UL)
- 16 A (IEC) / 10 A (UL)

**General ordering data**

| Type                            | Order No.                  | Version   | GTIN (EAN)    | Qty.      | Product data  | Packaging |
|---------------------------------|----------------------------|---|---------------|-----------|---|-----------|
| SLT<br>5.08/16/180B<br>SN OR BX | <a href="#">1611850000</a> | PCB plug-in connector,<br>male plug, 5.08 mm, No.<br>of poles: 16, 180°, TOP<br>connection, Clamping<br>range, rated connection,<br>max.: 2.5 mm <sup>2</sup> , Box | 4008190192730 | 50 pc(s). | IEC: 400 V / 16 A / 0.2 - 2.5 mm <sup>2</sup><br>UL: 300 V / 15 A / AWG 26 - AWG 14 | Box       |

**SLZF 5.08/180FI**


Male plugs with tension-clamp wire connection. The male plugs provide space for labelling and can be coded.

- 0.2 - 2.5 mm<sup>2</sup> (IEC) / 26 - 14 AWG (UL)
- 400 V (IEC) / 300 V (UL)
- 23 A (IEC) / 15 A (UL)

**General ordering data**

| Type                              | Order No.                  | Version   | GTIN (EAN)    | Qty.      | Product data  | Packaging |
|-----------------------------------|----------------------------|---|---------------|-----------|---|-----------|
| SLZF<br>5.08/16/180FI<br>SN OR BX | <a href="#">1846650000</a> | PCB plug-in connector,<br>male plug, 5.08 mm,<br>No. of poles: 16, 180°,<br>Tension clamp connection,<br>Clamping range, rated<br>connection, max.: 3.31<br>mm <sup>2</sup> , Box | 4032248362950 | 50 pc(s). | IEC: 400 V / 23 A / 0.2 - 2.5 mm <sup>2</sup><br>UL: 300 V / 15 A / AWG 26 - AWG 12 | Box       |

**OMNIMATE Signal - series BL/SL 5.08  
BL 5.08/16/180 SN OR BX**

**Weidmüller Interface GmbH & Co. KG**  
Klingenbergstraße 16  
D-32758 Detmold  
Germany  
Fon: +49 5231 14-0  
Fax: +49 5231 14-292083  
www.weidmueller.com

**Mating connector (conditionally pluggable)**
**SLDV-THR 5.08/180F**


High-temperature resistant, double level, laterally offset, male connector with flange or solder flange. 1.5 mm solder pin is suitable for reflow soldering. 3.2 mm solder pin suitable for reflow and wave soldering. The pin headers provide space for labelling and can be coded.

- 400 V (IEC) / 300 V (UL)
- 15 A (IEC) / 10 A (UL)

**General ordering data**

| Type                                    | Order No.                  | Version   | GTIN (EAN)    | Qty.      | Product data                          | Packaging |
|---|----------------------------|---|---------------|-----------|---------------------------------------|-----------|
| SLDV-THR<br>5.08/32/180F<br>3.2SN BK BX | <a href="#">1866330000</a> | PCB plug-in connector, male<br>header, Flange, Reflow<br>solder connection, 5.08<br>mm, No. of poles: 32, 180°,<br>Solder pin length (l): 3.2<br>mm, tinned, Black, Box | 4032248470457 | 10 pc(s). | IEC: 400 V / 15 A<br>UL: 300 V / 10 A | Box       |
| SLDV-THR<br>5.08/32/180F<br>1.5SN BK BX | <a href="#">1881330000</a> | PCB plug-in connector, male<br>header, Flange, Reflow<br>solder connection, 5.08<br>mm, No. of poles: 32, 180°,<br>Solder pin length (l): 1.5<br>mm, tinned, Black, Box | 4032248482634 | 10 pc(s). | IEC: 400 V / 15 A<br>UL: 300 V / 10 A | Box       |

**SLDV-THR 5.08/180FLF**


High-temperature resistant, double level, laterally offset, male connector with flange or solder flange. 1.5 mm solder pin is suitable for reflow soldering. 3.2 mm solder pin suitable for reflow and wave soldering. The pin headers provide space for labelling and can be coded.

- 400 V (IEC) / 300 V (UL)
- 15 A (IEC) / 10 A (UL)

**General ordering data**

| Type                                      | Order No.                  | Version  | GTIN (EAN)    | Qty.      | Product data                          | Packaging |
|---|----------------------------|--|---------------|-----------|---------------------------------------|-----------|
| SLDV-THR<br>5.08/32/180FLF<br>3.2SN BK BX | <a href="#">1866320000</a> | PCB plug-in connector,<br>male header, Flange /<br>Solder flange, Reflow solder<br>connection, 5.08 mm, No.<br>of poles: 32, 180°, Solder<br>pin length (l): 3.2 mm,<br>tinned, Black, Box | 4032248470440 | 10 pc(s). | IEC: 400 V / 15 A<br>UL: 300 V / 10 A | Box       |
| SLDV-THR<br>5.08/32/180FLF<br>1.5SN BK BX | <a href="#">1881510000</a> | PCB plug-in connector,<br>male header, Flange /<br>Solder flange, Reflow solder<br>connection, 5.08 mm, No.<br>of poles: 32, 180°, Solder  | 4032248482849 | 10 pc(s). | IEC: 400 V / 15 A<br>UL: 300 V / 10 A | Box       |

**OMNIMATE Signal - series BL/SL 5.08  
BL 5.08/16/180 SN OR BX**

**Weidmüller Interface GmbH & Co. KG**  
Klingenbergstraße 16  
D-32758 Detmold  
Germany  
Fon: +49 5231 14-0  
Fax: +49 5231 14-292083  
www.weidmueller.com

**Mating connector (conditionally pluggable)**

pin length (l): 1.5 mm,  
tinned, Black, Box

**SL 5.00/90B**


Male connectors with 90° outlet direction. The solder pin length is optimised for wave flow soldering. The pin headers provide space for labelling and can be coded.

- 400 V (IEC) / 300 V (UL)
- 18 A (IEC) / 15 A (UL)

**General ordering data**

| Type        | Order No.                 | Version   | GTIN (EAN)    | Qty.      | Product data      | Packaging |
|-------------|---------------------------|---|---------------|-----------|-------------------|-----------|
| SL          | <a href="#">158100000</a> | PCB plug-in connector, male   | 4008190145262 | 50 pc(s). | IEC: 400 V / 18 A | Box       |
| 5.00/16/90B |                           | header, Dovetails for fixing  |               |           | UL: 300 V / 15 A  |           |
| 3.2SN OR BX |                           | blocks, Solder connection,<br>5.00 mm, No. of poles: 16,<br>90°, Solder pin length (l):<br>3.2 mm, tinned, Orange,<br>Box |               |           |                   |           |

**SLS 5.08TB RF15**


Male plugs with clamping-yoke screw wire-connect system. With clip-on feet for attaching the male plugs on rail. The male plugs provide space for labelling and can be coded.

- 0.2 - 2.5 mm<sup>2</sup> (IEC) / 26 - 12 AWG (UL)
- 400 V (IEC) / 300 V (UL)
- 21.5 A (IEC) / 15 A (UL)

**General ordering data**

| Type          | Order No.                  | Version   | GTIN (EAN)    | Qty.     | Product data                                    | Packaging |
|---------------|----------------------------|---|---------------|----------|---|-----------|
| SLS           | <a href="#">1846100000</a> | PCB plug-in connector,  | 4032248362387 | 5 pc(s). | IEC: 400 V / 21.5 A / 0.2 - 2.5 mm <sup>2</sup> | Box       |
| 5.08/16/180TB |                            | male plug, 5.08 mm, No. of  |               |          | UL: 300 V / 14 A / AWG 26 - AWG 12              |           |
| RF15 SN OR    |                            | poles: 16, 180°, Clamping   |               |          |   |           |
| BX            |                            | yoke connection, Clamping<br>range, rated connection,<br>max.: 3.31 mm <sup>2</sup> , Box |               |          |   |           |

**OMNIMATE Signal - series BL/SL 5.08  
BL 5.08/16/180 SN OR BX**

**Weidmüller Interface GmbH & Co. KG**  
Klingenbergstraße 16  
D-32758 Detmold  
Germany  
Fon: +49 5231 14-0  
Fax: +49 5231 14-292083  
www.weidmueller.com

**Mating connector (conditionally pluggable)**
**SLS 5.08TB KF35**


Male plugs with clamping-yoke screw wire-connect system. With clip-on feet for attaching the male plugs on rail. The male plugs provide space for labelling and can be coded.

- 0.2 - 2.5 mm<sup>2</sup> (IEC) / 26 - 12 AWG (UL)
- 400 V (IEC) / 300 V (UL)
- 21.5 A (IEC) / 15 A (UL)

**General ordering data**

| Type                                | Order No.                  | Version  | GTIN (EAN)    | Qty.     | Product data  | Packaging |
|-------------------------------------|----------------------------|--|---------------|----------|---|-----------|
| SLS<br>5.08/16/180TB<br>KF SN OR BX | <a href="#">1846180000</a> | PCB plug-in connector,<br>male plug, 5.08 mm, No. of<br>poles: 16, 180°, Clamping<br>yoke connection, Clamping<br>range, rated connection,<br>max.: 3.31 mm <sup>2</sup> , Box | 4032248362462 | 5 pc(s). | IEC: 400 V / 21.5 A / 0.2 - 2.5 mm <sup>2</sup><br>UL: 300 V / 14 A / AWG 26 - AWG 12 | Box       |

**SL 5.08/180B**


Male connectors with straight outlet direction. The solder pin length is optimised for wave flow soldering. The pin headers provide space for labelling and can be coded.

- 400 V (IEC) / 300 V (UL)
- 18 A (IEC) / 15 A (UL)

**General ordering data**

| Type                              | Order No.                  | Version  | GTIN (EAN)    | Qty.      | Product data                          | Packaging |
|-----------------------------------|----------------------------|--|---------------|-----------|---------------------------------------|-----------|
| SL<br>5.08/16/180B<br>3.2SN OR BX | <a href="#">1520960000</a> | PCB plug-in connector, male<br>header, Dovetails for fixing<br>blocks, Solder connection,<br>5.08 mm, No. of poles: 16,<br>Solder pin length (l): 3.2<br>mm, tinned, Orange, Box | 4008190145149 | 50 pc(s). | IEC: 400 V / 18 A<br>UL: 300 V / 15 A | Box       |

**OMNIMATE Signal - series BL/SL 5.08  
BL 5.08/16/180 SN OR BX**

**Weidmüller Interface GmbH & Co. KG**  
Klingenbergstraße 16  
D-32758 Detmold  
Germany  
Fon: +49 5231 14-0  
Fax: +49 5231 14-292083  
www.weidmueller.com

**Mating connector (conditionally pluggable)**
**SLZF 5.08/270B**


Male plugs with tension-clamp wire connection. The male plugs provide space for labelling and can be coded.

- 0.2 - 2.5 mm<sup>2</sup> (IEC) / 26 - 14 AWG (UL)
- 400 V (IEC) / 300 V (UL)
- 23 A (IEC) / 15 A (UL)

**General ordering data**

| Type                             | Order No.                  | Version   | GTIN (EAN)    | Qty.      | Product data  | Packaging |
|----------------------------------|----------------------------|---|---------------|-----------|---|-----------|
| SLZF<br>5.08/16/270B<br>SN OR BX | <a href="#">1706280000</a> | PCB plug-in connector,<br>male plug, 5.08 mm,<br>No. of poles: 16, 270°,<br>Tension clamp connection,<br>Clamping range, rated<br>connection, max.: 3.31<br>mm <sup>2</sup> , Box | 4032248197828 | 50 pc(s). | IEC: 400 V / 20.5 A / 0.2 - 2.5 mm <sup>2</sup><br>UL: 300 V / 15 A / AWG 26 - AWG 12 | Box       |

**SL-SMT 5.00/90LF Box**


High-temperature-resistant male header, packed in box or tape. In tape with 1.5 mm solder pin optimised for automatic assembly. 3.2 mm solder pin suitable for reflow and wave soldering. These male connectors provide space for labelling and can be coded.

- 400 V (IEC) / 300 V (UL)
- 19 A (IEC) / 15 A (UL)

**General ordering data**

| Type                                  | Order No.                  | Version   | GTIN (EAN)    | Qty.      | Product data                          | Packaging |
|---------------------------------------|----------------------------|---|---------------|-----------|---------------------------------------|-----------|
| SL-SMT<br>5.00/16/90LF<br>1.5SN BK BX | <a href="#">1797370000</a> | PCB plug-in connector,<br>male header, Solder flange,<br>Reflow solder connection,<br>5.00 mm, No. of poles: 16,<br>90°, Solder pin length (l):<br>1.5 mm, tinned, Black, Box | 4032248238156 | 50 pc(s). | IEC: 400 V / 19 A<br>UL: 300 V / 15 A | Box       |
| SL-SMT<br>5.00/16/90LF<br>3.2SN BK BX | <a href="#">1840490000</a> | PCB plug-in connector,<br>male header, Solder flange,<br>Reflow solder connection,<br>5.00 mm, No. of poles: 16,<br>90°, Solder pin length (l):<br>3.2 mm, tinned, Black, Box | 4032248351336 | 50 pc(s). | IEC: 400 V / 19 A<br>UL: 300 V / 15 A | Box       |

**OMNIMATE Signal - series BL/SL 5.08  
BL 5.08/16/180 SN OR BX**

**Weidmüller Interface GmbH & Co. KG**  
Klingenbergstraße 16  
D-32758 Detmold  
Germany  
Fon: +49 5231 14-0  
Fax: +49 5231 14-292083  
www.weidmueller.com

**Mating connector (conditionally pluggable)**
**SLZF 5.08/180F**


Male plugs with tension-clamp wire connection. The male plugs provide space for labelling and can be coded.

- 0.2 - 2.5 mm<sup>2</sup> (IEC) / 26 - 14 AWG (UL)
- 400 V (IEC) / 300 V (UL)
- 23 A (IEC) / 15 A (UL)

**General ordering data**

| Type                             | Order No.                  | Version   | GTIN (EAN)    | Qty.      | Product data  | Packaging |
|----------------------------------|----------------------------|---|---------------|-----------|---|-----------|
| SLZF<br>5.08/16/180F<br>SN OR BX | <a href="#">1847170000</a> | PCB plug-in connector,<br>male plug, 5.08 mm,<br>No. of poles: 16, 180°,<br>Tension clamp connection,<br>Clamping range, rated<br>connection, max.: 3.31<br>mm <sup>2</sup> , Box | 4032248363254 | 50 pc(s). | IEC: 400 V / 23 A / 0.2 - 2.5 mm <sup>2</sup><br>UL: 300 V / 15 A / AWG 26 - AWG 12 | Box       |

**SL-SMT 5.08/180LF Box**


High-temperature-resistant male header, packed in box or tape. In tape with 1.5 mm solder pin optimised for automatic assembly. 3.2 mm solder pin suitable for reflow and wave soldering. These male connectors provide space for labelling and can be coded.

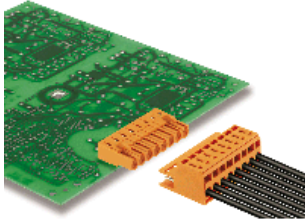
- 400 V (IEC) / 300 V (UL)
- 19 A (IEC) / 15 A (UL)

**General ordering data**

| Type                                   | Order No.                  | Version  | GTIN (EAN)    | Qty.      | Product data                          | Packaging |
|--|----------------------------|--|---------------|-----------|---------------------------------------|-----------|
| SL-SMT<br>5.08/16/180LF<br>3.2SN BK BX | <a href="#">1838580000</a> | PCB plug-in connector,<br>male header, Solder flange,<br>Reflow solder connection,<br>5.08 mm, No. of poles: 16,<br>180°, Solder pin length (l):<br>3.2 mm, tinned, Black, Box | 4032248348640 | 50 pc(s). | IEC: 400 V / 19 A<br>UL: 300 V / 15 A | Box       |
| SL-SMT<br>5.08/16/180LF<br>1.5SN BK BX | <a href="#">1776502001</a> | PCB plug-in connector,<br>male header, Solder flange,<br>Reflow solder connection,<br>5.08 mm, No. of poles: 16,<br>180°, Solder pin length (l):<br>1.5 mm, tinned, Black, Box | 4032248159383 | 50 pc(s). | IEC: 400 V / 19 A<br>UL: 300 V / 15 A | Box       |

**OMNIMATE Signal - series BL/SL 5.08  
BL 5.08/16/180 SN OR BX**

**Weidmüller Interface GmbH & Co. KG**  
Klingenbergstraße 16  
D-32758 Detmold  
Germany  
Fon: +49 5231 14-0  
Fax: +49 5231 14-292083  
www.weidmueller.com

**Mating connector (fully pluggable)**
**SLZF 5.08/180**


Male plugs with tension-clamp wire connection. The male plugs provide space for labelling and can be coded.

- 0.2 - 2.5 mm<sup>2</sup> (IEC) / 26 - 14 AWG (UL)
- 400 V (IEC) / 300 V (UL)
- 23 A (IEC) / 15 A (UL)

**General ordering data**

| Type                            | Order No.                  | Version   | GTIN (EAN)              | Qty. | Product data  | Packaging |
|---------------------------------|----------------------------|---|-------------------------|------|---|-----------|
| SLZF<br>5.08/16/180<br>SN OR BX | <a href="#">1709510000</a> | PCB plug-in connector,<br>male plug, 5.08 mm,<br>No. of poles: 16, 180°,<br>Tension clamp connection,<br>Clamping range, rated<br>connection, max.: 3.31<br>mm <sup>2</sup> , Box | 4008190318819 50 pc(s). |      | IEC: 400 V / 23 A / 0.2 - 2.5 mm <sup>2</sup><br>UL: 300 V / 15 A / AWG 26 - AWG 12 | Box       |
| SLZF<br>5.08/16/180<br>SN BK BX | <a href="#">1709740000</a> | PCB plug-in connector,<br>male plug, 5.08 mm,<br>No. of poles: 16, 180°,<br>Tension clamp connection,<br>Clamping range, rated<br>connection, max.: 3.31<br>mm <sup>2</sup> , Box | 4008190319045 50 pc(s). |      | IEC: 400 V / 23 A / 0.2 - 2.5 mm <sup>2</sup><br>UL: 300 V / 15 A / AWG 26 - AWG 12 | Box       |

**SL-SMT 5.08/90G Box**


High-temperature-resistant male header, packed in box or tape. In tape with 1.5 mm solder pin optimised for automatic assembly. 3.2 mm solder pin suitable for reflow and wave soldering. These male connectors provide space for labelling and can be coded.

- 400 V (IEC) / 300 V (UL)
- 19 A (IEC) / 15 A (UL)

**General ordering data**

| Type                                 | Order No.                  | Version   | GTIN (EAN)              | Qty. | Product data                          | Packaging |
|--------------------------------------|----------------------------|---|-------------------------|------|---------------------------------------|-----------|
| SL-SMT<br>5.08/16/90G<br>1.5SN BK BX | <a href="#">1775142001</a> | PCB plug-in connector, male<br>header, closed side, Reflow<br>solder connection, 5.08<br>mm, No. of poles: 16, 90°,<br>Solder pin length (l): 1.5<br>mm, tinned, Black, Box | 4032248156719 50 pc(s). |      | IEC: 400 V / 19 A<br>UL: 300 V / 15 A | Box       |
| SL-SMT<br>5.08/16/90G<br>3.2SN BK BX | <a href="#">1780320000</a> | PCB plug-in connector, male<br>header, closed side, Reflow<br>solder connection, 5.08<br>mm, No. of poles: 16, 90°,   | 4032248165643 50 pc(s). |      | IEC: 400 V / 19 A<br>UL: 300 V / 15 A | Box       |

Creation date January 6, 2014 7:30:18 AM CET

**OMNIMATE Signal - series BL/SL 5.08  
BL 5.08/16/180 SN OR BX**

**Weidmüller Interface GmbH & Co. KG**  
Klingenbergstraße 16  
D-32758 Detmold  
Germany  
Fon: +49 5231 14-0  
Fax: +49 5231 14-292083  
www.weidmueller.com

**Mating connector (fully pluggable)**

Solder pin length (l): 3.2  
mm, tinned, Black, Box

**SL-SMT 5.08/90 Box**


High-temperature-resistant, 90° angled, open male header  
Packed in box or tape. In tape with 1.5 mm solder pin  
optimised for automatic assembly. 3.2 mm solder pin  
suitable for reflow and wave soldering. These male  
connectors provide space for labelling and can be coded.

- 400 V (IEC) / 300 V (UL)
- 19 A (IEC) / 15 A (UL)

**General ordering data**

| Type                                | Order No.                  | Version   | GTIN (EAN)    | Qty.      | Product data                          | Packaging |
|-------------------------------------|----------------------------|---|---------------|-----------|---------------------------------------|-----------|
| SL-SMT<br>5.08/16/90<br>3.2SN BK BX | <a href="#">1780090000</a> | PCB plug-in connector, male<br>header, open side, Reflow<br>solder connection, 5.08<br>mm, No. of poles: 16, 90°,<br>Solder pin length (l): 3.2<br>mm, tinned, Black, Box | 4032248165414 | 50 pc(s). | IEC: 400 V / 19 A<br>UL: 300 V / 15 A | Box       |
| SL-SMT<br>5.08/16/90<br>1.5SN BK BX | <a href="#">1774902001</a> | PCB plug-in connector, male<br>header, open side, Reflow<br>solder connection, 5.08<br>mm, No. of poles: 16, 90°,<br>Solder pin length (l): 1.5<br>mm, tinned, Black, Box | 4032248155842 | 50 pc(s). | IEC: 400 V / 19 A<br>UL: 300 V / 15 A | Box       |

**SLD 5.08/180G**


2-tier male header with parallel pin arrangement. The  
solder pin length is optimised for wave flow soldering.  
The pin headers provide space for labelling and can be  
coded.

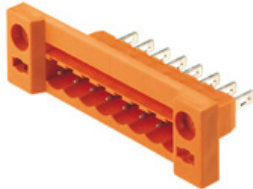
- 400 V (IEC) / 300 V (UL)
- 11 A (IEC) / 10 A (UL)

**General ordering data**

| Type                               | Order No.                  | Version  | GTIN (EAN)    | Qty.      | Product data                          | Packaging |
|------------------------------------|----------------------------|--|---------------|-----------|---------------------------------------|-----------|
| SLD<br>5.08/32/180G<br>3.2SN OR BX | <a href="#">1602530000</a> | PCB plug-in connector,<br>male header, closed side,<br>Solder connection, 5.08<br>mm, No. of poles: 32, 180°,<br>Solder pin length (l): 3.2<br>mm, tinned, Orange, Box | 4008190071387 | 10 pc(s). | IEC: 400 V / 11 A<br>UL: 300 V / 10 A | Box       |

**OMNIMATE Signal - series BL/SL 5.08  
BL 5.08/16/180 SN OR BX**

**Weidmüller Interface GmbH & Co. KG**  
Klingenbergstraße 16  
D-32758 Detmold  
Germany  
Fon: +49 5231 14-0  
Fax: +49 5231 14-292083  
www.weidmueller.com

**Mating connector (fully pluggable)**
**SLDF 5.08**


Male connector for through-panel mounting with optional locking function. Internal connection as flat-blade or solder connection. These male connectors provide space for labelling and can be coded.

- 400 V (IEC) / 300 V (UL)
- 15 A (IEC) / 10 A (UL)

**General ordering data**

| Type                         | Order No.                  | Version   | GTIN (EAN)    | Qty.      | Product data                          | Packaging |
|------------------------------|----------------------------|---|---------------|-----------|---------------------------------------|-----------|
| SLDF 5.08 L/F<br>16 SN OR BX | <a href="#">1599270000</a> | PCB plug-in connector,<br>male header, 5.08 mm,<br>No. of poles: 16, 180°, Flat-<br>blade connection, Solder<br>connection, Box | 4008190066826 | 50 pc(s). | IEC: 400 V / 15 A<br>UL: 300 V / 10 A | Box       |

**SLD 5.08/90G**


2-tier male header with parallel pin arrangement. The solder pin length is optimised for wave flow soldering. The pin headers provide space for labelling and can be coded.

- 400 V (IEC) / 300 V (UL)
- 11 A (IEC) / 10 A (UL)

**General ordering data**

| Type                              | Order No.                  | Version   | GTIN (EAN)    | Qty.      | Product data                          | Packaging |
|-----------------------------------|----------------------------|---|---------------|-----------|---------------------------------------|-----------|
| SLD<br>5.08/32/90G<br>3.2SN OR BX | <a href="#">1601930000</a> | PCB plug-in connector, male<br>header, closed side, Solder<br>connection, 5.08 mm, No.<br>of poles: 32, 90°, Solder pin<br>length (l): 3.2 mm, tinned,<br>Orange, Box | 4008190067779 | 10 pc(s). | IEC: 400 V / 11 A<br>UL: 300 V / 10 A | Box       |

**OMNIMATE Signal - series BL/SL 5.08  
BL 5.08/16/180 SN OR BX**

**Weidmüller Interface GmbH & Co. KG**  
Klingenbergstraße 16  
D-32758 Detmold  
Germany  
Fon: +49 5231 14-0  
Fax: +49 5231 14-292083  
www.weidmueller.com

**Mating connector (fully pluggable)**
**SL 5.08/135**


Male connectors with 135° outlet direction. The solder pin length is optimised for wave flow soldering. The pin headers provide space for labelling and can be coded.

- 400 V (IEC) / 300 V (UL)
- 17 A (IEC) / 15 A (UL)

**General ordering data**

| Type                             | Order No.                  | Version  | GTIN (EAN)    | Qty.      | Product data                          | Packaging |
|----------------------------------|----------------------------|--|---------------|-----------|---------------------------------------|-----------|
| SL<br>5.08/16/135<br>3.2SN OR BX | <a href="#">1603200000</a> | PCB plug-in connector,<br>male header, open side,<br>Solder connection, 5.08<br>mm, No. of poles: 16, 135°,<br>Solder pin length (l): 3.2<br>mm, tinned, Orange, Box | 4008190123635 | 50 pc(s). | IEC: 400 V / 17 A<br>UL: 300 V / 15 A | Box       |

**SL-SMT 5.08/180 Box**


High-temperature-resistant, straight, open ended male header. Packed in box or tape. In tape with 1.5 mm solder pin optimised for automatic assembly. 3.2 mm solder pin suitable for reflow and wave soldering. These male connectors provide space for labelling and can be coded.

- 400 V (IEC) / 300 V (UL)
- 19 A (IEC) / 15 A (UL)

**General ordering data**

| Type                                 | Order No.                  | Version  | GTIN (EAN)    | Qty.      | Product data                          | Packaging |
|--------------------------------------|----------------------------|--|---------------|-----------|---------------------------------------|-----------|
| SL-SMT<br>5.08/16/180<br>3.2SN BK BX | <a href="#">1838120000</a> | PCB plug-in connector, male<br>header, open side, Reflow<br>solder connection, 5.08<br>mm, No. of poles: 16, 180°,<br>Solder pin length (l): 3.2<br>mm, tinned, Black, Box | 4032248348183 | 50 pc(s). | IEC: 400 V / 19 A<br>UL: 300 V / 15 A | Box       |
| SL-SMT<br>5.08/16/180<br>1.5SN BK BX | <a href="#">1775742001</a> | PCB plug-in connector, male<br>header, open side, Reflow<br>solder connection, 5.08<br>mm, No. of poles: 16, 180°,<br>Solder pin length (l): 1.5<br>mm, tinned, Black, Box | 4032248158393 | 50 pc(s). | IEC: 400 V / 19 A<br>UL: 300 V / 15 A | Box       |

**OMNIMATE Signal - series BL/SL 5.08  
BL 5.08/16/180 SN OR BX**

**Weidmüller Interface GmbH & Co. KG**  
Klingenbergstraße 16  
D-32758 Detmold  
Germany  
Fon: +49 5231 14-0  
Fax: +49 5231 14-292083  
www.weidmueller.com

**Mating connector (fully pluggable)**
**SL 5.00/90**


Male connectors with 90° outlet direction. The solder pin length is optimised for wave flow soldering. The pin headers provide space for labelling and can be coded.

- 400 V (IEC) / 300 V (UL)
- 18 A (IEC) / 15 A (UL)

**General ordering data**

| Type        | Order No.                  | Version  | GTIN (EAN)    | Qty.      | Product data      | Packaging |
|-------------|----------------------------|--|---------------|-----------|-------------------|-----------|
| SL          | <a href="#">1571260000</a> | PCB plug-in connector, male  | 4008190136192 | 50 pc(s). | IEC: 400 V / 18 A | Box       |
| 5.00/16/90  |                            | header, open side, Solder connection, 5.00 mm, No. of poles: 16, 90°, Solder pin length (l): 3.2 mm, tinned, Orange, Box |               |           | UL: 300 V / 15 A  |           |
| 3.2SN OR BX |                            |  |               |           |                   |           |

**SL 5.08/90**


Male connectors with 90° outlet direction. The solder pin length is optimised for wave flow soldering. The pin headers provide space for labelling and can be coded.

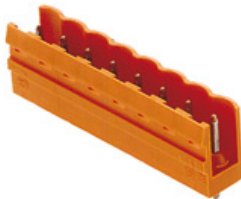
- 400 V (IEC) / 300 V (UL)
- 18 A (IEC) / 15 A (UL)

**General ordering data**

| Type        | Order No.                  | Version  | GTIN (EAN)    | Qty.      | Product data      | Packaging |
|-------------|----------------------------|--|---------------|-----------|-------------------|-----------|
| SL          | <a href="#">1509460000</a> | PCB plug-in connector, male  | 4008190147464 | 50 pc(s). | IEC: 400 V / 18 A | Box       |
| 5.08/16/90  |                            | header, open side, Solder connection, 5.08 mm, No. of poles: 16, 90°, Solder pin length (l): 3.2 mm, tinned, Orange, Box |               |           | UL: 300 V / 15 A  |           |
| 3.2SN OR BX |                            |  |               |           |                   |           |

**OMNIMATE Signal - series BL/SL 5.08  
BL 5.08/16/180 SN OR BX**

**Weidmüller Interface GmbH & Co. KG**  
Klingenbergstraße 16  
D-32758 Detmold  
Germany  
Fon: +49 5231 14-0  
Fax: +49 5231 14-292083  
www.weidmueller.com

**Mating connector (fully pluggable)**
**SL 5.08/180**


Male connectors with straight outlet direction. The solder pin length is optimised for wave flow soldering. The pin headers provide space for labelling and can be coded.

- 400 V (IEC) / 300 V (UL)
- 18 A (IEC) / 15 A (UL)

**General ordering data**

| Type        | Order No.                  | Version   | GTIN (EAN)    | Qty.      | Product data                          | Packaging |
|-------------|----------------------------|---|---------------|-----------|---------------------------------------|-----------|
| SL          | <a href="#">1518660000</a> | PCB plug-in connector, male header, open side, Solder connection, 5.08 mm, No. of poles: 16, 180°, Solder pin length (l): 3.2 mm, tinned, Orange, Box | 4008190083304 | 50 pc(s). | IEC: 400 V / 18 A<br>UL: 300 V / 15 A | Box       |
| 5.08/16/180 |                            |   |               |           |                                       |           |
| 3.2SN OR BX |                            |   |               |           |                                       |           |

**SL-SMT 5.08/180G Box**


High-temperature-resistant male header, packed in box or tape. In tape with 1.5 mm solder pin optimised for automatic assembly. 3.2 mm solder pin suitable for reflow and wave soldering. These male connectors provide space for labelling and can be coded.

- 400 V (IEC) / 300 V (UL)
- 19 A (IEC) / 15 A (UL)

**General ordering data**

| Type         | Order No.                  | Version   | GTIN (EAN)    | Qty.      | Product data                          | Packaging |
|--------------|----------------------------|---|---------------|-----------|---------------------------------------|-----------|
| SL-SMT       | <a href="#">1776272001</a> | PCB plug-in connector, male header, closed side, Reflow solder connection, 5.08 mm, No. of poles: 16, 180°, Solder pin length (l): 1.5 mm, tinned, Black, Box | 4032248159055 | 50 pc(s). | IEC: 400 V / 19 A<br>UL: 300 V / 15 A | Box       |
| 5.08/16/180G |                            |   |               |           |                                       |           |
| 1.5SN BK BX  |                            |   |               |           |                                       |           |
| SL-SMT       | <a href="#">1838350000</a> | PCB plug-in connector, male header, closed side, Reflow solder connection, 5.08 mm, No. of poles: 16, 180°, Solder pin length (l): 3.2 mm, tinned, Black, Box | 4032248348411 | 50 pc(s). | IEC: 400 V / 19 A<br>UL: 300 V / 15 A | Box       |
| 5.08/16/180G |                            |   |               |           |                                       |           |
| 3.2SN BK BX  |                            |   |               |           |                                       |           |