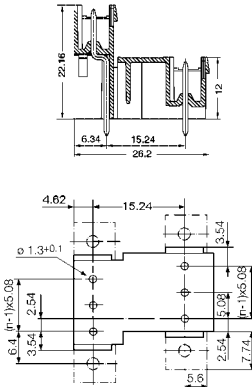
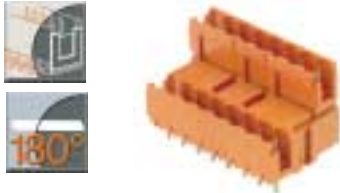


Omnimate Range - 5.08 mm Pitch



Pin headers SLD 5.08V/180B

new



Technical data	VDE	UL	CSA
Rated voltage (V)	250*	300	300
Rated current (A)	7	15	10

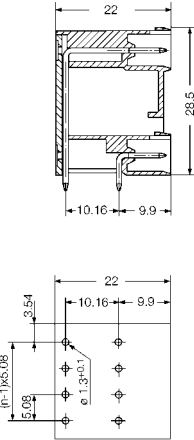
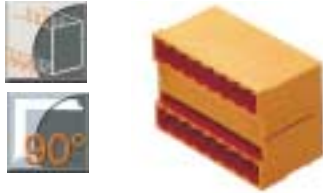
*Pollution severity 3 / Overvoltage category III
Additional technical data see page 217

Solder pin length **3.2 mm** **4.5 mm**

Color					
Poles	Type	Part No.	Part No.	Part No.	Qty.
4	SLD 5.08V/4/180B	1726740000	1726970000	100	
6	SLD 5.08V/6/180B	1726750000	1726980000	100	
8	SLD 5.08V/8/180B	1726760000	1726990000	100	
10	SLD 5.08V/10/180B	1726770000	1727000000	50	
12	SLD 5.08V/12/180B	1726780000	1727010000	50	
14	SLD 5.08V/14/180B	1726790000	1727020000	50	
16	SLD 5.08V/16/180B	1726800000	1727030000	50	
18	SLD 5.08V/18/180B	1726810000	1727040000	50	
20	SLD 5.08V/20/180B	1726820000	1727050000	50	
22	SLD 5.08V/22/180B	1726830000	1727060000	50	
24	SLD 5.08V/24/180B	1726840000	1727070000	50	
26	SLD 5.08V/26/180B	1726850000	1727080000	50	
28	SLD 5.08V/28/180B	1726860000	1727090000	50	
30	SLD 5.08V/30/180B	1726870000	1727100000	50	
32	SLD 5.08V/32/180B	1726880000	1727110000	50	
34	SLD 5.08V/34/180B	1726890000	1727120000	50	
36	SLD 5.08V/36/180B	1726900000	1727130000	20	
38	SLD 5.08V/38/180B	1726910000	1727140000	20	
40	SLD 5.08V/40/180B	1726920000	1727150000	20	
42	SLD 5.08V/42/180B	1726930000	1727160000	20	
44	SLD 5.08V/44/180B	1726940000	1727170000	20	
46	SLD 5.08V/46/180B	1726950000	1727180000	20	
48	SLD 5.08V/48/180B	1726960000	1727190000	20	

Accessories	Page
Mounting	187*
Marking	190
Coding	193
Miscellaneous	-

Pin headers SLD 5.08R/90



Technical data	VDE	UL	CSA
Rated voltage (V)	250*	300	300
Rated current (A)	8	15	10

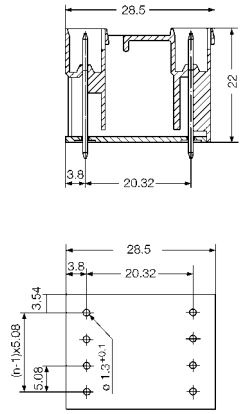
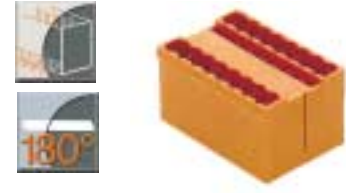
*Pollution severity 3 / Overvoltage category III
Additional technical data see page 216

Solder pin length **4.5 mm** **4.5 mm**

Color					
Poles	Type	Part No.	Part No.	Part No.	Qty.
4	SLD 5.08R/4/90	1602020000	1711450000	50	
6	SLD 5.08R/6/90	1602030000	1675320000	50	
8	SLD 5.08R/8/90	1602040000	1675330000	50	
10	SLD 5.08R/10/90	1602050000	1711480000	50	
12	SLD 5.08R/12/90	1602060000	1711490000	50	
14	SLD 5.08R/14/90	1602070000	1711500000	20	
16	SLD 5.08R/16/90	1602080000	1711510000	20	
18	SLD 5.08R/18/90	1602090000	1711520000	20	
20	SLD 5.08R/20/90	1602100000	1711530000	20	
22	SLD 5.08R/22/90	1602110000	1711540000	10	
24	SLD 5.08R/24/90	1602120000	1711550000	10	
26	SLD 5.08R/26/90	1602130000	1711560000	10	
28	SLD 5.08R/28/90	1602140000	1711570000	10	
30	SLD 5.08R/30/90	1602150000	1711580000	10	
32	SLD 5.08R/32/90	1602160000	1711590000	10	
34	SLD 5.08R/34/90	1602170000	1711600000	10	
36	SLD 5.08R/36/90	1602180000	1711610000	10	
38	SLD 5.08R/38/90	1602190000	1711620000	10	
40	SLD 5.08R/40/90	1602200000	1711630000	10	
42	SLD 5.08R/42/90	1602210000	1711640000	10	
44	SLD 5.08R/44/90	1602220000	1711650000	10	
46	SLD 5.08R/46/90	1602230000	1711660000	10	
48	SLD 5.08R/48/90	1602240000	1711670000	10	

Accessories	Page
Mounting	-
Marking	190
Coding	192, 193
Miscellaneous	-

Pin headers SLD 5.08R/180



Technical data	VDE	UL	CSA
Rated voltage (V)	250*	300	300
Rated current (A)	8	15	10

*Pollution severity 3 / Overvoltage category III
Additional technical data see page 216

Solder pin length **4.5 mm** **4.5 mm**

Color					
Poles	Type	Part No.	Part No.	Part No.	Qty.
4	SLD 5.08R/4/180	1602620000	1711680000	50	
6	SLD 5.08R/6/180	1602630000	1711690000	50	
8	SLD 5.08R/8/180	1602640000	1711700000	50	
10	SLD 5.08R/10/180	1602650000	1711710000	50	
12	SLD 5.08R/12/180	1602660000	1711720000	50	
14	SLD 5.08R/14/180	1602670000	1711730000	20	
16	SLD 5.08R/16/180	1602680000	1676730000	20	
18	SLD 5.08R/18/180	1602690000	1711750000	20	
20	SLD 5.08R/20/180	1602700000	1711760000	20	
22	SLD 5.08R/22/180	1602710000	1711770000	10	
24	SLD 5.08R/24/180	1602720000	1711780000	10	
26	SLD 5.08R/26/180	1602730000	1711790000	10	
28	SLD 5.08R/28/180	1602740000	1711800000	10	
30	SLD 5.08R/30/180	1602750000	1711810000	10	
32	SLD 5.08R/32/180	1602760000	1711820000	10	
34	SLD 5.08R/34/180	1602770000	1711830000	10	
36	SLD 5.08R/36/180	1602780000	1711840000	10	
38	SLD 5.08R/38/180	1602790000	1711850000	10	
40	SLD 5.08R/40/180	1602800000	1711860000	10	
42	SLD 5.08R/42/180	1602810000	1711870000	10	
44	SLD 5.08R/44/180	1602820000	1711880000	10	
46	SLD 5.08R/46/180	1602830000	1711890000	10	
48	SLD 5.08R/48/180	1602840000	1711900000	10	

Accessories	Page
Mounting	-
Marking	190
Coding	192, 193
Miscellaneous	-

* See Note, page 187