

Printed-circuit board connector - MSTBC 2,5/20-ST-5,08 - 1808997

Please be informed that the data shown in this PDF Document is generated from our Online Catalog. Please find the complete data in the user's documentation. Our General Terms of Use for Downloads are valid
(<http://phoenixcontact.com/download>)



The illustration shows an 10-position version

Plug component, nominal current: 12 A, rated voltage (III/2): 320 V, number of positions: 20, pitch: 5.08 mm, connection method: Crimp connection, Color: green, Corresponding female crimp contacts with current [A] and conductor cross section range [mm²] data: 10A/MSTBC-MT 0,5-1,0 (3190564); 10A/MSTBC-MT 0,5-1,0 BA (3190645); 12A/MSTBC-MT 1,5-2,5 (3190551); 12A/MSTBC-MT 1,5-2,5 BA (3190658). BA = Bandkontakte

Why buy this product

- ✓ Inexpensive connection of large quantities of pre-assembled conductors



Key Commercial Data

Packing unit	1 STK
GTIN	 4 017918 047344
GTIN	4017918047344
Weight per Piece (excluding packing)	9.760 g
Custom tariff number	85472000
Country of origin	Poland

Technical data

Dimensions

Length	25 mm
Height	10 mm
Width	101.56 mm
Pitch	5.08 mm
Dimension a	96.52 mm

General

Range of articles	MSTBC 2,5/...-ST
-------------------	------------------

Printed-circuit board connector - MSTBC 2,5/20-ST-5,08 - 1808997

Technical data

General

Type of contact	Female connector
Number of positions	20
Connection method	Crimp connection
Insulating material group	I
Rated surge voltage (III/3)	4 kV
Rated surge voltage (III/2)	4 kV
Rated surge voltage (II/2)	4 kV
Rated voltage (III/3)	320 V
Rated voltage (III/2)	320 V
Rated voltage (II/2)	630 V
Connection in acc. with standard	EN-VDE
Nominal current I_N	12 A
Nominal cross section	2.5 mm ²
Maximum load current	12 A
Insulating material	PA
Flammability rating according to UL 94	V0

Connection data

Conductor cross section flexible min.	0.5 mm ²
Conductor cross section flexible max.	2.5 mm ²
Conductor cross section AWG min.	20
Conductor cross section AWG max.	14
Minimum AWG according to UL/CUL	20
Maximum AWG according to UL/CUL	14

Standards and Regulations

Connection in acc. with standard	EN-VDE
	CSA
Flammability rating according to UL 94	V0

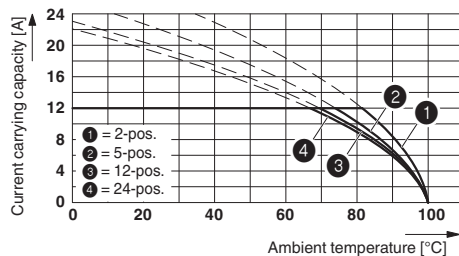
Environmental Product Compliance

China RoHS	Environmentally friendly use period: unlimited = EFUP-e
	No hazardous substances above threshold values

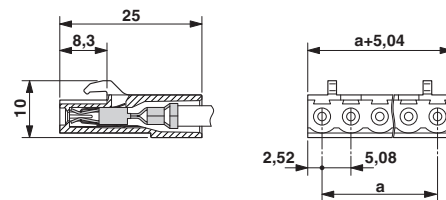
Drawings

Printed-circuit board connector - MSTBC 2,5/20-ST-5,08 - 1808997

Diagram



Dimensional drawing



Type: MSTBC 2,5/...-ST-5,08 with MSTBA 2,5/...-G-5,08; contact: MSTBC-MT 1,5 - 2,5

Classifications

eCl@ss

eCl@ss 4.0	272607xx
eCl@ss 4.1	27260701
eCl@ss 5.0	27260701
eCl@ss 5.1	27260701
eCl@ss 6.0	27260704
eCl@ss 7.0	27440402
eCl@ss 8.0	27440309
eCl@ss 9.0	27440309

ETIM

ETIM 3.0	EC001121
ETIM 4.0	EC002638
ETIM 5.0	EC002638
ETIM 6.0	EC002638

UNSPSC

UNSPSC 6.01	30211810
UNSPSC 7.0901	39121409
UNSPSC 11	39121409
UNSPSC 12.01	39121409
UNSPSC 13.2	39121409

Approvals

Approvals

Printed-circuit board connector - MSTBC 2,5/20-ST-5,08 - 1808997


Approvals


Approvals


CSA / UL Recognized / VDE Gutachten mit Fertigungsüberwachung / cUL Recognized / IECCE CB Scheme / EAC / cULus Recognized


Ex Approvals

Approval details

CSA		http://www.csagroup.org/services/testing-and-certification/certified-product-listing/	13631
mm²/AWG/kcmil		20-14	
Nominal current I _N		10 A	
Nominal voltage U _N		300 V	

UL Recognized		http://database.ul.com/cgi-bin/XYV/template/LISEXT/1FRAME/index.htm	FILE E 60425
		B	D
mm²/AWG/kcmil		20-14	20-14
Nominal current I _N		10 A	10 A
Nominal voltage U _N		250 V	300 V

VDE Gutachten mit Fertigungsüberwachung		http://www.vde.com/en/Institute/OnlineService/VDE-approved-products/Pages/Online-Search.aspx	40004701
mm²/AWG/kcmil		0.5-1.0	
Nominal current I _N		10 A	
Nominal voltage U _N		250 V	

cUL Recognized		http://database.ul.com/cgi-bin/XYV/template/LISEXT/1FRAME/index.htm	FILE E 60425
		B	D
mm²/AWG/kcmil		20-14	20-14
Nominal current I _N		10 A	10 A

Printed-circuit board connector - MSTBC 2,5/20-ST-5,08 - 1808997

Approvals

	B	D
Nominal voltage UN	250 V	300 V

IECEE CB Scheme	CB scheme	http://www.iecee.org/	DE1-58636-B1B2
mm²/AWG/kcmil	0.5-1.0		
Nominal current IN	10 A		
Nominal voltage UN	250 V		

EAC	EAC	EAC-Zulassung
-----	------------	---------------

cULus Recognized	cULus	http://database.ul.com/cgi-bin/XYV/template/LISEXT/1FRAME/index.htm
------------------	--------------	---

Accessories

Accessories

Coding element

Coding profile - CP-MSTB - 1734634



Coding profile, is inserted into the slot on the plug or inverted header, red insulating material

Crimp contact

Accessories - MSTBC-MT 0,5-1,0 - 3190564



Module female contact, is inserted into the plug housing MSTBC after crimping the conductor, for conductors from 0.5 to 1.0 mm²

Printed-circuit board connector - MSTBC 2,5/20-ST-5,08 - 1808997

Accessories

Accessories - MSTBC-MT 0,5-1,0 BA - 3190645



Module female contact, is inserted into the MSTBC connector shell after the conductor has been crimped, for conductors from 0.5 - 1.0 mm², ribbon contact

Accessories - MSTBC-MT 1,5-2,5 - 3190551



Module female contact, is inserted into the plug housing MSTBC after crimping the conductor, for conductors from 1.5 to 2.5 mm²

Female insert - MSTBC-MT 1,5-2,5 BA - 3190658



Module female contact, is inserted into the MSTBC connector shell after the conductor has been crimped, for conductors from 1.5 - 2.5 mm², ribbon contact

Crimping tool

Crimping pliers - CRIMPFOX MT 2,5 - 1204038



Crimping pliers, for crimping conductors to the module female contacts STG-MTN, crimp range: 0.5-2.5 mm², AWG: 20-14

Labeled terminal marker

Marker card - SK 5,08/3,8:FORTL.ZAHLEN - 0804293



Marker card, Card, white, labeled, Horizontal: Consecutive numbers 1 - 10, 11 - 20, etc. up to 91 - (99)100, Mounting type: Adhesive, for terminal block width: 5.08 mm, Lettering field: 5.08 x 3.8 mm

Printed-circuit board connector - MSTBC 2,5/20-ST-5,08 - 1808997

Accessories

Screwdriver tools

Screwdriver - SZS 0,4X2,5 VDE - 1205037



Screwdriver, slot-headed, VDE insulated, size: 0.4 x 2.5 x 80 mm, 2-component grip, with non-slip grip

Accessories - MSTBC-MT 0,2-0,5 - 1879531



Module socket contact, is inserted into the plug housing MSTBC after crimping the conductor, for conductors from 0.2 to 0.5 mm²

Accessories - MSTBC-MT 0,2-0,5 BAND - 1879544



Module socket contact, is inserted into the plug housing MSTBC after crimping the conductor, for conductors from 0.2 to 0.5 mm²

Additional products

Base strip - MSTBW 2,5/20-G-5,08 - 1735701



Header, nominal current: 12 A, rated voltage (III/2): 320 V, number of positions: 20, pitch: 5.08 mm, Color: green, Contact surface: Tin, mounting: Wave soldering

Printed-circuit board connector - MSTBC 2,5/20-ST-5,08 - 1808997

Accessories

Base strip - MSTBVA 2,5/20-G-5,08 - 1755914



Header, nominal current: 12 A, rated voltage (III/2): 320 V, number of positions: 20, pitch: 5.08 mm, Color: green, Contact surface: Tin, mounting: Wave soldering

Base strip - MSTBA 2,5/20-G-5,08 - 1757420



Header, nominal current: 12 A, rated voltage (III/2): 320 V, number of positions: 20, pitch: 5.08 mm, Color: green, Contact surface: Tin, mounting: Wave soldering

Base strip - MSTBV 2,5/20-G-5,08 - 1758199



Header, nominal current: 12 A, rated voltage (III/2): 320 V, number of positions: 20, pitch: 5.08 mm, Color: green, Contact surface: Tin, mounting: Wave soldering

Base strip - MSTB 2,5/20-G-5,08 - 1759198



Header, nominal current: 12 A, rated voltage (III/2): 320 V, number of positions: 20, pitch: 5.08 mm, Color: green, Contact surface: Tin, mounting: Wave soldering

Base strip - MDSTB 2,5/20-G1-5,08 - 1762680



Header, nominal current: 10 A, rated voltage (III/2): 320 V, number of positions: 20, pitch: 5.08 mm, Color: green, Contact surface: Tin, mounting: Wave soldering, In combination with MVSTB or FKCV plug components, both an MVSTBW (or FKCVW) and an MVSTBR plug (or FKCVR) must be used. Combination with TMSTBP plug components is not possible!

Printed-circuit board connector - MSTBC 2,5/20-ST-5,08 - 1808997

Accessories

Base strip - MDSTBV 2,5/20-G1-5,08 - 1762693



Header, nominal current: 10 A, rated voltage (III/2): 320 V, number of positions: 20, pitch: 5.08 mm, Color: green, Contact surface: Tin, mounting: Wave soldering, In combination with MVSTB or FKCV plug components, both an MVSTBW (or FKCVW) and an MVSTBR plug (or FKCVR) must be used. Combination with TMSTBP plug components is not possible!

Base strip - SMSTBA 2,5/20-G-5,08 - 1767559



Header, nominal current: 12 A, rated voltage (III/2): 320 V, number of positions: 20, pitch: 5.08 mm, Color: green, Contact surface: Tin, mounting: Wave soldering

Base strip - MSTBA 2,5/20-G-5,08-LA - 1768121



Header, nominal current: 12 A, rated voltage (III/2): 320 V, number of positions: 20, pitch: 5.08 mm, Color: green, Contact surface: Tin, mounting: Wave soldering

Base strip - SMSTB 2,5/20-G-5,08 - 1769641



Header, nominal current: 12 A, rated voltage (III/2): 320 V, number of positions: 20, pitch: 5.08 mm, Color: green, Contact surface: Tin, mounting: Wave soldering

Housing - MSTBV 2,5/20-GEH-5,08 - 1808641



Header, nominal current: 12 A, rated voltage (III/2): 320 V, number of positions: 20, pitch: 5.08 mm, Color: green, Contact surface: Tin, mounting: Wave soldering

Printed-circuit board connector - MSTBC 2,5/20-ST-5,08 - 1808997

Accessories

Base strip - EMSTBA 2,5/20-G-5,08 - 1880481

Header, nominal current: 12 A, rated voltage (III/2): 320 V, number of positions: 20, pitch: 5.08 mm, Color: green, Contact surface: Tin, mounting: Press-in technology



Base strip - EMSTBVA 2,5/20-G-5,08 - 1915916

Header, nominal current: 12 A, rated voltage (III/2): 320 V, number of positions: 20, pitch: 5.08 mm, Color: green, Contact surface: Tin, mounting: Press-in technology

