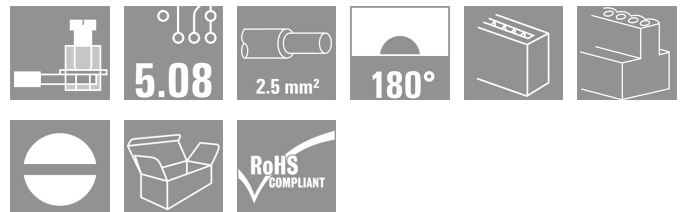


OMNIMATE Signal - series BLA/SLA 5.08 BLA 21 SN OR

Weidmüller Interface GmbH & Co. KG
Klingenbergstraße 16
D-32758 Detmold
Germany
Fon: +49 5231 14-0
Fax: +49 5231 14-292083
www.weidmueller.com



Female header with clamping yoke connection system. The principle of the vibration-proof screw connection and the Unimate range pin arrangement provides a unique security during operation. Also available with dovetail (B) for convenient attachment of fixing blocks. The BLA has a labelling panel and can be coded. Supplied in cardboard box.

- 0.20 - 2.5mm² (IEC) / 26 - 12 AWG (UL)
- 400 V (IEC) / 300 V (UL)
- 17.5 A (IEC) / 10 A (UL)

General ordering data

Order No.	1283660000
Type	BLA 21 SN OR
Version	PCB plug-in connector, female plug, 5.08 mm, No. of poles: 21, 180°, Clamping yoke connection, Clamping range, rated connection, max.: 3.32 mm ² , Box
GTIN (EAN)	4008190045289
Qty.	12 pc(s).
Product data	IEC: 400 V / 17.5 A / 0.2 - 2.5 mm ² UL: 300 V / 10 A / AWG 26 - AWG 12
Packaging	Box

Creation date June 6, 2013 11:53:28 AM CEST

**OMNIMATE Signal - series BLA/SLA 5.08
BLA 21 SN OR**

Weidmüller Interface GmbH & Co. KG
 Klingenbergstraße 16
 D-32758 Detmold
 Germany
 Fon: +49 5231 14-0
 Fax: +49 5231 14-292083
 www.weidmueller.com

Technical data**Dimensions and weights**

Net weight	39.05 g
------------	---------

System parameters

Product family	OMNIMATE Signal - series BLA/SLA 5.08	Wire connection method	Clamping yoke connection
Conductor outlet direction	180°	Pitch in mm (P)	5.08 mm
Pitch in inches (P)	0.2 inch	No. of poles	21
Number of rows	1	Screwdriver blade	0.6 x 3.5
Screwdriver blade standard	DIN 5264	Tightening torque, min.	0.4 Nm
Tightening torque, max.	0.5 Nm	Clamping screw	M 2.5
Stripping length	7 mm	L1 in mm	101.6 mm
L1 in inches	4 inch	Touch-safe protection acc. to DIN VDE 57 106	Finger-safe unplugged/ back-of-hand-safe plugged

Material data

Insulating material	PBT GF	Colour	Orange
Colour chart (similar)	RAL 2000	UL 94 flammability rating	V-0
CTI	≥ 200	Contact material	CuSn
Contact surface	tinned	Continuous operating temp., min.	-25 °C
Continuous operating temp., max.	120 °C		

Connectable conductors

Clamping range, rated connection, min.	0.13 mm ²	Clamping range, rated connection, max.	3.32 mm ²
Wire connection cross section AWG, min.	AWG 28	Wire connection cross section AWG, max.	AWG 16
Solid, min. H05(07) V-U	0.2 mm ²	Solid, max. H05(07) V-U	2.5 mm ²
Flexible, min. H05(07) V-K	0.2 mm ²	Flexible, max. H05(07) V-K	1.5 mm ²
w. wire end ferrule, DIN 46228 pt 1, min	0.2 mm ²	w. wire end ferrule, DIN 46228 pt 1, max.	1.5 mm ²
w. plastic collar ferrule, DIN 46228 pt 4, min.	0.2 mm ²	w. plastic collar ferrule, DIN 46228 pt 4, max.	1.5 mm ²
Plug gauge acc. to EN 60999 a x b; Ø	2.4 mm x 1.5 mm		

DIN IEC rating data

Rated current, min. no. of poles (Tu=20°C)	17.5 A	Rated current, max. no. of poles (Tu=20°C)	12.5 A
Rated current, number of poles (Tu=40°C), min	16 A	Rated current, number of poles (Tu=40°C), max.	11 A
Rated voltage for surge voltage class / pollution degree II/2	400 V	Rated voltage for surge voltage class / pollution degree III/2	320 V
Rated voltage for surge voltage class / pollution degree III/3	250 V	Rated impulse voltage for surge voltage class/ pollution degree II/2	4 kV
Rated impulse voltage for surge voltage class/ pollution degree III/2	4 kV	Rated impulse voltage for surge voltage class/ contamination degree III/3	4 kV
Short-time withstand current resistance	3 x 1s with 100 A		

**OMNIMATE Signal - series BLA/SLA 5.08
BLA 21 SN OR**

Weidmüller Interface GmbH & Co. KG
Klingenbergstraße 16
D-32758 Detmold
Germany
Fon: +49 5231 14-0
Fax: +49 5231 14-292083
www.weidmueller.com

Technical data

CSA rating data

Institute (CSA)



Rated voltage (Use group B)

300 V

Rated current (use group B)	10 A
Rated current (use group D)	10 A
Wire cross-section, AWG, max.	AWG 12

Rated voltage (use group D)	300 V
Wire cross-section, AWG, min.	AWG 26

UL 1059 rating data

Institute (UR)



Rated voltage (use group B)

300 V

Rated current (use group B)	10 A
Rated current (use group D)	10 A
Wire cross-section, AWG, max.	AWG 12

Rated voltage (use group D)	300 V
Wire cross-section, AWG, min.	AWG 26

Classifications

ETIM 3.0	EC001284	UNSPSC	30-21-18-10
eClass 4.1	27-26-07-01	eClass 5.1	27-26-07-04
eClass 6.2	27-26-07-04	eClass 7.1	27-44-04-02

Notes

Notes

- Additional colours on request
- Gold-plated contact surfaces on request
- Rated current related to rated cross-section & min. No. of poles.
- Wire end ferrule without plastic collar to DIN 46228/1
- Wire end ferrule with plastic collar to DIN 46228/4
- Rated data refer only to the component itself. Clearance and creepage distances to other components are to be designed in accordance with the relevant application standards.

Approvals

Approvals

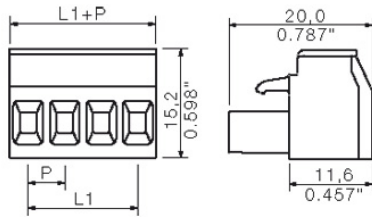


ROHS

Conform

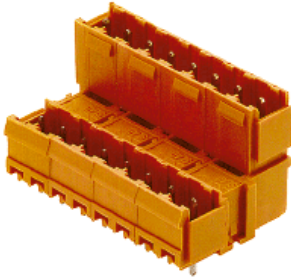
**OMNIMATE Signal - series BLA/SLA 5.08
BLA 21 SN OR**

Weidmüller Interface GmbH & Co. KG
Klingenbergstraße 16
D-32758 Detmold
Germany
Fon: +49 5231 14-0
Fax: +49 5231 14-292083
www.weidmueller.com

Drawings

**OMNIMATE Signal - series BLA/SLA 5.08
BLA 21 SN OR**

Weidmüller Interface GmbH & Co. KG
 Klingenbergstraße 16
 D-32758 Detmold
 Germany
 Fon: +49 5231 14-0
 Fax: +49 5231 14-292083
 www.weidmueller.com

Mating connector (conditionally pluggable)
SLAD 180B


Dimensionally stable, straight, codable 2-tier male connector from the Unimate range of plugs with integral aid to prevent wrong connections. Available with open or closed sides. Fixing blocks can be attached to the closed version. The solder pin length of 3.2 mm has been optimised for wave soldering. Supplied in cardboard box.

- 400 V (IEC) / 300 V (UL)
- 10 A (IEC) / 10 A (UL)

General ordering data

Order No.	Type	Version	GTIN (EAN)	Qty.	Product data	Packaging
1395660000	SLAD 42/180B 3.2SN OR	PCB plug-in connector, male header, Dovetails for fixing blocks, Solder connection, 5.08 mm, No. of poles: 42, 180°, Solder pin length (l): 3.2 mm, tinned, Orange, Box	4032248194100	10 pc(s).	IEC: 400 V / 10 A UL: 300 V / 10 A	Box

SLA 90B


Dimensionally stable, angled, codable male connector from the Unimate range of plugs with integral aid to prevent wrong connections. Available with open or closed sides. Fixing blocks can be attached to the closed version. The solder pin length of 3.2 mm has been optimised for wave soldering. Supplied in cardboard box.

- 400 V (IEC) / 300 V (UL)
- 17.5 A (IEC) / 10 A (UL)

General ordering data

Order No.	Type	Version	GTIN (EAN)	Qty.	Product data	Packaging
1270660000	SLA 21/90B 3.2SN OR BX	PCB plug-in connector, male header, Dovetails for fixing blocks, Solder connection, 5.08 mm, No. of poles: 21, 90°, Solder pin length (l): 3.2 mm, tinned, Orange, Box	4032248188086	20 pc(s).	IEC: 400 V / 17.5 A UL: 300 V / 10 A	Box

**OMNIMATE Signal - series BLA/SLA 5.08
BLA 21 SN OR**

Weidmüller Interface GmbH & Co. KG
 Klingenbergstraße 16
 D-32758 Detmold
 Germany
 Fon: +49 5231 14-0
 Fax: +49 5231 14-292083
 www.weidmueller.com

Mating connector (conditionally pluggable)
SLAD 90B


Dimensionally stable, angled, codable 2-tier male connector from the Unimate range of plugs with integral aid to prevent wrong connections. Available with open or closed sides. Fixing blocks can be attached to the closed version. The solder pin length of 3.2 mm has been optimised for wave soldering. Supplied in cardboard box.

- 400 V (IEC) / 300 V (UL)
- 10 A (IEC) / 10 A (UL)

General ordering data

Order No.	Type	Version	GTIN (EAN)	Qty.	Product data	Packaging
1391460000	SLAD 42/90B 3.2SN OR	PCB plug-in connector, male header, Dovetails for fixing blocks, Solder connection, 5.08 mm, No. of poles: 42, 90°, Solder pin length (l): 3.2 mm, tinned, Orange, Box	4008190038205	10 pc(s).	IEC: 400 V / 10 A UL: 300 V / 10 A	Box

SLA 180B


Dimensionally stable, straight, codable male connector from the Unimate range of plugs with integral aid to prevent wrong connections. Available with open or closed sides. Fixing blocks can be attached to the closed version. The solder pin length of 3.2 mm has been optimised for wave soldering. Supplied in cardboard box.

- 400 V (IEC) / 300 V (UL)
- 17.5 A (IEC) / 10 A (UL)

General ordering data

Order No.	Type	Version	GTIN (EAN)	Qty.	Product data	Packaging
1271160000	SLA 21/180B 3.2SN OR BX	PCB plug-in connector, male header, Dovetails for fixing blocks, Solder connection, 5.08 mm, No. of poles: 21, 180°, Solder pin length (l): 3.2 mm, tinned, Orange, Box	4008190065218	20 pc(s).	IEC: 400 V / 17.5 A UL: 300 V / 10 A	Box

**OMNIMATE Signal - series BLA/SLA 5.08
BLA 21 SN OR**

Weidmüller Interface GmbH & Co. KG
 Klingenbergstraße 16
 D-32758 Detmold
 Germany
 Fon: +49 5231 14-0
 Fax: +49 5231 14-292083
 www.weidmueller.com

Mating connector (fully pluggable)
SLA 90


Dimensionally stable, angled, codable male connector from the Unimate range of plugs with integral aid to prevent wrong connections. Available with open or closed sides. Fixing blocks can be attached to the closed version. The solder pin length of 3.2 mm has been optimised for wave soldering. Supplied in cardboard box.

- 400 V (IEC) / 300 V (UL)
- 17.5 A (IEC) / 10 A (UL)

General ordering data

Order No.	Type	Version	GTIN (EAN)	Qty.	Product data	Packaging
1272160000	SLA 21/90 3.2SN OR BX	PCB plug-in connector, male header, open side, Solder connection, 5.08 mm, No. of poles: 21, 90°, Solder pin length (l): 3.2 mm, tinned, Orange, Box	4008190189686	20 pc(s).	IEC: 400 V / 17.5 A UL: 300 V / 10 A	Box

SLA 180


Dimensionally stable, straight, codable male connector from the Unimate range of plugs with integral aid to prevent wrong connections. Available with open or closed sides. Fixing blocks can be attached to the closed version. The solder pin length of 3.2 mm has been optimised for wave soldering. Supplied in cardboard box.

- 400 V (IEC) / 300 V (UL)
- 17.5 A (IEC) / 10 A (UL)

General ordering data

Order No.	Type	Version	GTIN (EAN)	Qty.	Product data	Packaging
1271660000	SLA 21/180 3.2SN OR BX	PCB plug-in connector, male header, open side, Solder connection, 5.08 mm, No. of poles: 21, 180°, Solder pin length (l): 3.2 mm, tinned, Orange, Box	4008190060466	20 pc(s).	IEC: 400 V / 17.5 A UL: 300 V / 10 A	Box

**OMNIMATE Signal - series BLA/SLA 5.08
BLA 21 SN OR**

Weidmüller Interface GmbH & Co. KG
 Klingenbergstraße 16
 D-32758 Detmold
 Germany
 Fon: +49 5231 14-0
 Fax: +49 5231 14-292083
 www.weidmueller.com

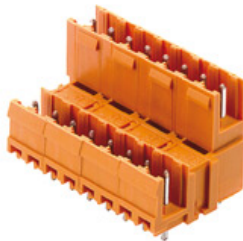
Mating connector (fully pluggable)
SLAD 90


Dimensionally stable, angled, codable 2-tier male connector from the Unimate range of plugs with integral aid to prevent wrong connections. Available with open or closed sides. Fixing blocks can be attached to the closed version. The solder pin length of 3.2 mm has been optimised for wave soldering. Supplied in cardboard box.

- 400 V (IEC) / 300 V (UL)
- 10 A (IEC) / 10 A (UL)

General ordering data

Order No.	Type	Version	GTIN (EAN)	Qty.	Product data	Packaging
1374160000	SLAD 42/90 3.2SN OR	PCB plug-in connector, male header, open side, Solder connection, 5.08 mm, No. of poles: 42, 90°, Solder pin length (l): 3.2 mm, tinned, Orange, Box	4008190032302	10 pc(s).	IEC: 400 V / 10 A UL: 300 V / 10 A	Box

SLAD 180


Dimensionally stable, straight, codable 2-tier male connector from the Unimate range of plugs with integral aid to prevent wrong connections. Available with open or closed sides. Fixing blocks can be attached to the closed version. The solder pin length of 3.2 mm has been optimised for wave soldering. Supplied in cardboard box.

- 400 V (IEC) / 300 V (UL)
- 10 A (IEC) / 10 A (UL)

General ordering data

Order No.	Type	Version	GTIN (EAN)	Qty.	Product data	Packaging
1376260000	SLAD 42/180 3.2SN OR	PCB plug-in connector, male header, open side, Solder connection, 5.08 mm, No. of poles: 42, 180°, Solder pin length (l): 3.2 mm, tinned, Orange, Box	4008190106768	10 pc(s).	IEC: 400 V / 10 A UL: 300 V / 10 A	Box