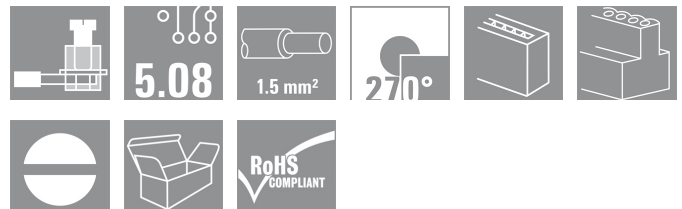


**OMNIMATE Signal - series BL/SL 5.08  
BLZ 5.08/06/270 SN OR BX**

**Weidmüller Interface GmbH & Co. KG**  
Klingenbergstraße 16  
D-32758 Detmold  
Germany  
Fon: +49 5231 14-0  
Fax: +49 5231 14-292083  
www.weidmueller.com

Do not use product for new  
developments



Female plugs with clamping-yoke screw connection.  
The female plugs provide space for labelling and can be coded.

- 0.2 - 2.5 mm<sup>2</sup> (IEC) / 26 - 12 AWG (UL)
- 400 V (IEC) / 300 V (UL)
- 15 A (IEC) / 10 A (UL)

**General ordering data**

|              |   |
|--------------|---|
| Order No.    | <a href="#">1557760000</a>  |
| Type         | BLZ 5.08/06/270 SN OR BX  |
| Version      | PCB plug-in connector, female plug, 5.08 mm,<br>No. of poles: 6, 270°, Clamping yoke connection,<br>Clamping range, rated connection, max.: 3.31<br>mm <sup>2</sup> , Box |
| GTIN (EAN)   | 4008190145910   |
| Qty.         | 60 pc(s).   |
| Product data | IEC: 400 V / 15 A / 0.2 - 2.5 mm <sup>2</sup><br>UL: 300 V / 10 A / AWG 26 - AWG 12   |
| Packaging    | Box   |

Creation date May 30, 2013 11:52:13 PM CEST

**OMNIMATE Signal - series BL/SL 5.08  
BLZ 5.08/06/270 SN OR BX**

**Weidmüller Interface GmbH & Co. KG**  
 Klingenbergstraße 16  
 D-32758 Detmold  
 Germany  
 Fon: +49 5231 14-0  
 Fax: +49 5231 14-292083  
 www.weidmueller.com

**Technical data****Dimensions and weights**

|            |         |
|------------|---------|
| Net weight | 12.15 g |
|------------|---------|

**System parameters**

|                            |                                     |  |                          |
|----------------------------|-------------------------------------|--|--------------------------|
| Product family             | OMNIMATE Signal - series BL/SL 5.08 | Wire connection method                       | Clamping yoke connection |
| Conductor outlet direction | 270°                                | Pitch in mm (P)                              | 5.08 mm                  |
| Pitch in inches (P)        | 0.2 inch                            | No. of poles                                 | 6                        |
| Number of rows             | 1                                   | Screwdriver blade                            | 0.6 x 3.5                |
| Screwdriver blade standard | DIN 5264                            | Tightening torque, min.                      | 0.4 Nm                   |
| Tightening torque, max.    | 0.5 Nm                              | Clamping screw                               | M 2.5                    |
| Stripping length           | 7 mm                                | L1 in mm                                     | 25.4 mm                  |
| L1 in inches               | 1 inch                              | Touch-safe protection acc. to DIN VDE 57 106 | Safe from finger touch   |

**Material data**

|                                  |          |                                  |        |
|----------------------------------|----------|----------------------------------|--------|
| Insulating material              | PBT      | Colour                           | Orange |
| Colour chart (similar)           | RAL 2000 | UL 94 flammability rating        | V-0    |
| CTI                              | ≥ 200    | Contact material                 | Cu-Leg |
| Contact surface                  | tinned   | Continuous operating temp., min. | -25 °C |
| Continuous operating temp., max. | 100 °C   |                                  |        |

**Connectable conductors**

|   |                         |   |                      |
|---|-------------------------|---|----------------------|
| Clamping range, rated connection, min.          | 0.13 mm <sup>2</sup>    | Clamping range, rated connection, max.          | 3.31 mm <sup>2</sup> |
| Wire connection cross section AWG, min.         | AWG 26                  | Wire connection cross section AWG, max.         | AWG 12               |
| Solid, min. H05(07) V-U                         | 0.2 mm <sup>2</sup>     | Solid, max. H05(07) V-U                         | 2.5 mm <sup>2</sup>  |
| Flexible, min. H05(07) V-K                      | 0.2 mm <sup>2</sup>     | Flexible, max. H05(07) V-K                      | 2.5 mm <sup>2</sup>  |
| w. wire end ferrule, DIN 46228 pt 1, min.       | 0.2 mm <sup>2</sup>     | w. wire end ferrule, DIN 46228 pt 1, max.       | 2.5 mm <sup>2</sup>  |
| w. plastic collar ferrule, DIN 46228 pt 4, min. | 0.2 mm <sup>2</sup>     | w. plastic collar ferrule, DIN 46228 pt 4, max. | 2.5 mm <sup>2</sup>  |
| Plug gauge acc. to EN 60999 a x b; Ø            | 2.8 mm x 2.0 mm; 2.4 mm |   |                      |

**DIN IEC rating data**

|   |                   |   |       |
|---|-------------------|---|-------|
| Rated current, min. no. of poles (Tu=20°C)                            | 15 A              | Rated current, max. no. of poles (Tu=20°C)                                | 12 A  |
| Rated current, number of poles (Tu=40°C), min                         | 12 A              | Rated current, number of poles (Tu=40°C), max.                            | 10 A  |
| Rated voltage for surge voltage class / pollution degree II/2         | 400 V             | Rated voltage for surge voltage class / pollution degree III/2            | 320 V |
| Rated voltage for surge voltage class / pollution degree III/3        | 250 V             | Rated impulse voltage for surge voltage class/ pollution degree II/2      | 4 kV  |
| Rated impulse voltage for surge voltage class/ pollution degree III/2 | 4 kV              | Rated impulse voltage for surge voltage class/ contamination degree III/3 | 4 kV  |
| Short-time withstand current resistance                               | 3 x 1s with 120 A |   |       |

**OMNIMATE Signal - series BL/SL 5.08  
BLZ 5.08/06/270 SN OR BX**

**Weidmüller Interface GmbH & Co. KG**  
Klingenbergstraße 16  
D-32758 Detmold  
Germany  
Fon: +49 5231 14-0  
Fax: +49 5231 14-292083  
www.weidmueller.com

**Technical data**

**CSA rating data**

Institute (CSA)



Rated voltage (Use group B)

300 V

|                               |        |
|-------------------------------|--------|
| Rated current (use group B)   | 10 A   |
| Rated current (use group D)   | 10 A   |
| Wire cross-section, AWG, max. | AWG 12 |

|                               |        |
|-------------------------------|--------|
| Rated voltage (use group D)   | 300 V  |
| Wire cross-section, AWG, min. | AWG 26 |

**UL 1059 rating data**

Institute (UR)



Rated voltage (use group B)

300 V

|                               |        |
|-------------------------------|--------|
| Rated current (use group B)   | 10 A   |
| Rated current (use group D)   | 10 A   |
| Wire cross-section, AWG, max. | AWG 12 |

|                               |        |
|-------------------------------|--------|
| Rated voltage (use group D)   | 300 V  |
| Wire cross-section, AWG, min. | AWG 26 |

**Classifications**

|            |             |            |             |
|------------|-------------|------------|-------------|
| ETIM 3.0   | EC001284    | UNSPSC     | 30-21-18-10 |
| eClass 4.1 | 27-26-07-01 | eClass 5.1 | 27-26-07-04 |
| eClass 6.2 | 27-26-07-04 | eClass 7.1 | 27-44-04-02 |

**Notes**

Notes

- Additional colours on request
- Gold-plated contact surfaces on request
- Rated current related to rated cross-section & min. No. of poles.
- Wire end ferrule without plastic collar to DIN 46228/1
- Wire end ferrule with plastic collar to DIN 46228/4
- P on drawing = pitch
- Rated data refer only to the component itself. Clearance and creepage distances to other components are to be designed in accordance with the relevant application standards.

**Approvals**

Approvals

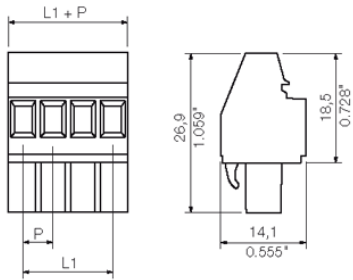


ROHS

Conform

**OMNIMATE Signal - series BL/SL 5.08  
BLZ 5.08/06/270 SN OR BX**

**Weidmüller Interface GmbH & Co. KG**  
Klingenbergstraße 16  
D-32758 Detmold  
Germany  
Fon: +49 5231 14-0  
Fax: +49 5231 14-292083  
[www.weidmueller.com](http://www.weidmueller.com)

**Drawings**

**OMNIMATE Signal - series BL/SL 5.08  
BLZ 5.08/06/270 SN OR BX**

**Weidmüller Interface GmbH & Co. KG**  
Klingenbergstraße 16  
D-32758 Detmold  
Germany  
Fon: +49 5231 14-0  
Fax: +49 5231 14-292083  
www.weidmueller.com

**Mating connector (conditionally pluggable)**
**SLDV-THR 5.08/180FLF**


High-temperature resistant, double level, laterally offset, male connector with flange or solder flange. 1.5 mm solder pin is suitable for reflow soldering. 3.2 mm solder pin suitable for reflow and wave soldering. The pin headers provide space for labelling and can be coded.

- 400 V (IEC) / 300 V (UL)
- 15 A (IEC) / 10 A (UL)

**General ordering data**

| Order No.                  | Type                                | Version  | GTIN (EAN)    | Qty.      | Product data                          | Packaging |
|----------------------------|-------------------------------------|--|---------------|-----------|---------------------------------------|-----------|
| <a href="#">1829170000</a> | SLDV-THR 5.08/12/180FLF 1.5SN BK BX | PCB plug-in connector, male header, Flange / Solder flange, Reflow solder connection, 5.08 mm, No. of poles: 12, 180°, Solder pin length (l): 1.5 mm, tinned, Black, Box | 4032248335862 | 50 pc(s). | IEC: 400 V / 15 A<br>UL: 300 V / 10 A | Box       |
| <a href="#">1829050000</a> | SLDV-THR 5.08/12/180FLF 3.2SN BK BX | PCB plug-in connector, male header, Flange / Solder flange, Reflow solder connection, 5.08 mm, No. of poles: 12, 180°, Solder pin length (l): 3.2 mm, tinned, Black, Box | 4032248335749 | 50 pc(s). | IEC: 400 V / 15 A<br>UL: 300 V / 10 A | Box       |

**SLZF 5.08/180FI**


Male plugs with tension-clamp wire connection. The male plugs provide space for labelling and can be coded.

- 0.2 - 2.5 mm<sup>2</sup> (IEC) / 26 - 14 AWG (UL)
- 400 V (IEC) / 300 V (UL)
- 23 A (IEC) / 15 A (UL)

**General ordering data**

| Order No.                  | Type                        | Version  | GTIN (EAN)    | Qty.      | Product data  | Packaging |
|----------------------------|-----------------------------|--|---------------|-----------|---|-----------|
| <a href="#">1846550000</a> | SLZF 5.08/06/180FI SN OR BX | PCB plug-in connector, male plug, 5.08 mm, No. of poles: 6, 180°, Tension clamp connection, Clamping range, rated connection, max.: 3.31 mm <sup>2</sup> , Box | 4032248362851 | 50 pc(s). | IEC: 400 V / 23 A / 0.2 - 2.5 mm <sup>2</sup><br>UL: 300 V / 15 A / AWG 26 - AWG 12 | Box       |

**OMNIMATE Signal - series BL/SL 5.08  
BLZ 5.08/06/270 SN OR BX**

**Weidmüller Interface GmbH & Co. KG**  
 Klingenbergstraße 16  
 D-32758 Detmold  
 Germany  
 Fon: +49 5231 14-0  
 Fax: +49 5231 14-292083  
 www.weidmueller.com

**Mating connector (conditionally pluggable)**
**SL-SMT 5.00/90LF Box**


High-temperature-resistant male header, packed in box or tape. In tape with 1.5 mm solder pin optimised for automatic assembly. 3.2 mm solder pin suitable for reflow and wave soldering. These male connectors provide space for labelling and can be coded.

- 400 V (IEC) / 300 V (UL)
- 19 A (IEC) / 15 A (UL)

**General ordering data**

| Order No.                  | Type                            | Version   | GTIN (EAN)    | Qty.      | Product data                          | Packaging |
|----------------------------|---------------------------------|---|---------------|-----------|---------------------------------------|-----------|
| <a href="#">1840390000</a> | SL-SMT 5.00/06/90LF 3.2SN BK BX | PCB plug-in connector, male header, Solder flange, Reflow solder connection, 5.00 mm, No. of poles: 6, 90°, Solder pin length (l): 3.2 mm, tinned, Black, Box | 4032248351237 | 50 pc(s). | IEC: 400 V / 19 A<br>UL: 300 V / 15 A | Box       |
| <a href="#">1797270000</a> | SL-SMT 5.00/06/90LF 1.5SN BK BX | PCB plug-in connector, male header, Solder flange, Reflow solder connection, 5.00 mm, No. of poles: 6, 90°, Solder pin length (l): 1.5 mm, tinned, Black, Box | 4032248238057 | 50 pc(s). | IEC: 400 V / 19 A<br>UL: 300 V / 15 A | Box       |

**SL-SMT 5.08/90LF Box**


High-temperature-resistant male header, packed in box or tape. In tape with 1.5 mm solder pin optimised for automatic assembly. 3.2 mm solder pin suitable for reflow and wave soldering. These male connectors provide space for labelling and can be coded.

- 400 V (IEC) / 300 V (UL)
- 19 A (IEC) / 15 A (UL)

**General ordering data**

| Order No.                  | Type                            | Version   | GTIN (EAN)    | Qty.      | Product data                          | Packaging |
|----------------------------|---------------------------------|---|---------------|-----------|---------------------------------------|-----------|
| <a href="#">1780450000</a> | SL-SMT 5.08/06/90LF 3.2SN BK BX | PCB plug-in connector, male header, Solder flange, Reflow solder connection, 5.08 mm, No. of poles: 6, 90°, Solder pin length (l): 3.2 mm, tinned, Black, Box | 4032248165773 | 50 pc(s). | IEC: 400 V / 19 A<br>UL: 300 V / 15 A | Box       |
| <a href="#">1775272001</a> | SL-SMT 5.08/06/90LF 1.5SN BK BX | PCB plug-in connector, male header, Solder flange, Reflow solder connection, 5.08 mm, No. of poles: 6,  | 4032248157259 | 50 pc(s). | IEC: 400 V / 19 A<br>UL: 300 V / 15 A | Box       |

**OMNIMATE Signal - series BL/SL 5.08  
BLZ 5.08/06/270 SN OR BX**

**Weidmüller Interface GmbH & Co. KG**  
Klingenbergstraße 16  
D-32758 Detmold  
Germany  
Fon: +49 5231 14-0  
Fax: +49 5231 14-292083  
www.weidmueller.com

**Mating connector (conditionally pluggable)**

90°, Solder pin length (l):  
1.5 mm, tinned, Black, Box

**SLDV-THR 5.08/180F**


High-temperature resistant, double level, laterally offset, male connector with flange or solder flange. 1.5 mm solder pin is suitable for reflow soldering. 3.2 mm solder pin suitable for reflow and wave soldering. The pin headers provide space for labelling and can be coded.

- 400 V (IEC) / 300 V (UL)
- 15 A (IEC) / 10 A (UL)

**General ordering data**

| Order No.                  | Type                              | Version  | GTIN (EAN)    | Qty.      | Product data                          | Packaging |
|----------------------------|-----------------------------------|--|---------------|-----------|---------------------------------------|-----------|
| <a href="#">1828810000</a> | SLDV-THR 5.08/12/180F 3.2SN BK BX | PCB plug-in connector, male header, Flange, Reflow solder connection, 5.08 mm, No. of poles: 12, 180°, Solder pin length (l): 3.2 mm, tinned, Black, Box | 4032248335497 | 50 pc(s). | IEC: 400 V / 15 A<br>UL: 300 V / 10 A | Box       |
| <a href="#">1828930000</a> | SLDV-THR 5.08/12/180F 1.5SN BK BX | PCB plug-in connector, male header, Flange, Reflow solder connection, 5.08 mm, No. of poles: 12, 180°, Solder pin length (l): 1.5 mm, tinned, Black, Box | 4032248335626 | 50 pc(s). | IEC: 400 V / 15 A<br>UL: 300 V / 10 A | Box       |

**SLS 5.08TB RF15**


Male plugs with clamping-yoke screw wire-connect system. With clip-on feet for attaching the male plugs on rail. The male plugs provide space for labelling and can be coded.

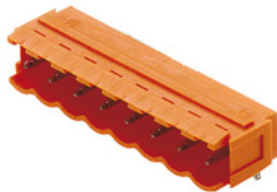
- 0.2 - 2.5 mm<sup>2</sup> (IEC) / 26 - 12 AWG (UL)
- 400 V (IEC) / 300 V (UL)
- 21.5 A (IEC) / 15 A (UL)

**General ordering data**

| Order No.                  | Type                            | Version  | GTIN (EAN)    | Qty.      | Product data  | Packaging |
|----------------------------|---------------------------------|--|---------------|-----------|---|-----------|
| <a href="#">1846060000</a> | SLS 5.08/06/180TB RF15 SN OR BX | PCB plug-in connector, male plug, 5.08 mm, No. of poles: 6, 180°, Clamping yoke connection, Clamping range, rated connection, max.: 3.31 mm <sup>2</sup> , Box | 4032248362349 | 20 pc(s). | IEC: 400 V / 21.5 A / 0.2 - 2.5 mm <sup>2</sup><br>UL: 300 V / 14 A / AWG 26 - AWG 12 | Box       |

**OMNIMATE Signal - series BL/SL 5.08  
BLZ 5.08/06/270 SN OR BX**

**Weidmüller Interface GmbH & Co. KG**  
Klingenbergstraße 16  
D-32758 Detmold  
Germany  
Fon: +49 5231 14-0  
Fax: +49 5231 14-292083  
www.weidmueller.com

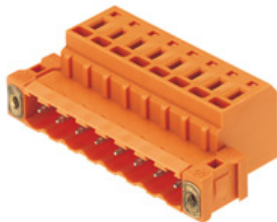
**Mating connector (conditionally pluggable)**
**SL 5.08/90B**


Male connectors with 90° outlet direction. The solder pin length is optimised for wave flow soldering. The pin headers provide space for labelling and can be coded.

- 400 V (IEC) / 300 V (UL)
- 18 A (IEC) / 15 A (UL)

**General ordering data**

| Order No.                  | Type                       | Version  | GTIN (EAN)    | Qty.      | Product data                          | Packaging |
|----------------------------|----------------------------|--|---------------|-----------|---------------------------------------|-----------|
| <a href="#">1510760000</a> | SL 5.08/06/90B 3.2SN OR BX | PCB plug-in connector, male header, Dovetails for fixing blocks, Solder connection, 5.08 mm, No. of poles: 6, Solder pin length (l): 3.2 mm, tinned, Orange, Box | 4008190157951 | 50 pc(s). | IEC: 400 V / 18 A<br>UL: 300 V / 15 A | Box       |

**SLZF 5.08/180F**


Male plugs with tension-clamp wire connection. The male plugs provide space for labelling and can be coded.

- 0.2 - 2.5 mm<sup>2</sup> (IEC) / 26 - 14 AWG (UL)
- 400 V (IEC) / 300 V (UL)
- 23 A (IEC) / 15 A (UL)

**General ordering data**

| Order No.                  | Type                       | Version  | GTIN (EAN)    | Qty.      | Product data  | Packaging |
|----------------------------|----------------------------|--|---------------|-----------|---|-----------|
| <a href="#">1846980000</a> | SLZF 5.08/06/180F SN OR BX | PCB plug-in connector, male plug, 5.08 mm, No. of poles: 6, 180°, Tension clamp connection, Clamping range, rated connection, max.: 3.31 mm <sup>2</sup> , Box | 4032248363148 | 50 pc(s). | IEC: 400 V / 23 A / 0.2 - 2.5 mm <sup>2</sup><br>UL: 300 V / 15 A / AWG 26 - AWG 12 | Box       |

**OMNIMATE Signal - series BL/SL 5.08  
BLZ 5.08/06/270 SN OR BX**

**Weidmüller Interface GmbH & Co. KG**  
 Klingenbergstraße 16  
 D-32758 Detmold  
 Germany  
 Fon: +49 5231 14-0  
 Fax: +49 5231 14-292083  
 www.weidmueller.com

**Mating connector (conditionally pluggable)**
**SL-SMT 5.08/90F Box**


High-temperature-resistant male header, packed in box or tape. In tape with 1.5 mm solder pin optimised for automatic assembly. 3.2 mm solder pin suitable for reflow and wave soldering. These male connectors provide space for labelling and can be coded.

- 400 V (IEC) / 300 V (UL)
- 19 A (IEC) / 15 A (UL)

**General ordering data**

| Order No.                  | Type                           | Version  | GTIN (EAN)    | Qty.      | Product data                          | Packaging |
|----------------------------|--------------------------------|--|---------------|-----------|---------------------------------------|-----------|
| <a href="#">1837670000</a> | SL-SMT 5.08/06/90F 3.2SN BK BX | PCB plug-in connector, male header, Flange, Reflow solder connection, 5.08 mm, No. of poles: 6, 90°, Solder pin length (l): 3.2 mm, tinned, Black, Box | 4032248347483 | 50 pc(s). | IEC: 400 V / 19 A<br>UL: 300 V / 15 A | Box       |

**SL-SMT 5.08/180F Box**


High-temperature-resistant male header, packed in box or tape. In tape with 1.5 mm solder pin optimised for automatic assembly. 3.2 mm solder pin suitable for reflow and wave soldering. These male connectors provide space for labelling and can be coded.

- 400 V (IEC) / 300 V (UL)
- 19 A (IEC) / 15 A (UL)

**General ordering data**

| Order No.                  | Type                            | Version   | GTIN (EAN)    | Qty.      | Product data                          | Packaging |
|----------------------------|---------------------------------|---|---------------|-----------|---------------------------------------|-----------|
| <a href="#">1820610000</a> | SL-SMT 5.08/06/180F 3.2SN BK BX | PCB plug-in connector, male header, Flange, Reflow solder connection, 5.08 mm, No. of poles: 6, 180°, Solder pin length (l): 3.2 mm, tinned, Black, Box | 4032248316571 | 50 pc(s). | IEC: 400 V / 19 A<br>UL: 300 V / 15 A | Box       |
| <a href="#">1837340000</a> | SL-SMT 5.08/06/180F 1.5SN BK BX | PCB plug-in connector, male header, Flange, Reflow solder connection, 5.08 mm, No. of poles: 6, 180°, Solder pin length (l): 1.5 mm, tinned, Black, Box | 4032248345939 | 50 pc(s). | IEC: 400 V / 19 A<br>UL: 300 V / 15 A | Box       |

**OMNIMATE Signal - series BL/SL 5.08  
BLZ 5.08/06/270 SN OR BX**

**Weidmüller Interface GmbH & Co. KG**  
Klingenbergstraße 16  
D-32758 Detmold  
Germany  
Fon: +49 5231 14-0  
Fax: +49 5231 14-292083  
www.weidmueller.com

**Mating connector (conditionally pluggable)**
**SL 5.08/135B**


Male connectors with 135° outlet direction. The solder pin length is optimised for wave flow soldering. The pin headers provide space for labelling and can be coded.

- 400 V (IEC) / 300 V (UL)
- 17 A (IEC) / 15 A (UL)

**General ordering data**

| Order No.                  | Type                        | Version  | GTIN (EAN)    | Qty.      | Product data                          | Packaging |
|----------------------------|-----------------------------|--|---------------|-----------|---------------------------------------|-----------|
| <a href="#">1605570000</a> | SL 5.08/06/135B 3.2SN OR BX | PCB plug-in connector, male header, Dovetails for fixing blocks, Solder connection, 5.08 mm, No. of poles: 6, 135°, Solder pin length (l): 3.2 mm, tinned, Orange, Box | 4008190268756 | 50 pc(s). | IEC: 400 V / 17 A<br>UL: 300 V / 15 A | Box       |

**SLZF 5.08/90B**


Male plugs with tension-clamp wire connection. The male plugs provide space for labelling and can be coded.

- 0.2 - 2.5 mm<sup>2</sup> (IEC) / 26 - 14 AWG (UL)
- 400 V (IEC) / 300 V (UL)
- 23 A (IEC) / 15 A (UL)

**General ordering data**

| Order No.                  | Type                      | Version   | GTIN (EAN)    | Qty.      | Product data  | Packaging |
|----------------------------|---------------------------|---|---------------|-----------|---|-----------|
| <a href="#">1673590000</a> | SLZF 5.08/06/90B SN OR BX | PCB plug-in connector, male plug, 5.08 mm, No. of poles: 6, 90°, Tension clamp connection, Clamping range, rated connection, max.: 3.31 mm <sup>2</sup> , Box | 4008190435301 | 50 pc(s). | IEC: 400 V / 20.5 A / 0.2 - 2.5 mm <sup>2</sup><br>UL: 300 V / 15 A / AWG 26 - AWG 12 | Box       |

**OMNIMATE Signal - series BL/SL 5.08  
BLZ 5.08/06/270 SN OR BX**

**Weidmüller Interface GmbH & Co. KG**  
Klingenbergstraße 16  
D-32758 Detmold  
Germany  
Fon: +49 5231 14-0  
Fax: +49 5231 14-292083  
www.weidmueller.com

**Mating connector (conditionally pluggable)**
**SL 5.08/180B**


Male connectors with straight outlet direction. The solder pin length is optimised for wave flow soldering. The pin headers provide space for labelling and can be coded.

- 400 V (IEC) / 300 V (UL)
- 18 A (IEC) / 15 A (UL)

**General ordering data**

| Order No.                  | Type                        | Version  | GTIN (EAN)    | Qty.      | Product data                          | Packaging |
|----------------------------|-----------------------------|--|---------------|-----------|---------------------------------------|-----------|
| <a href="#">1519960000</a> | SL 5.08/06/180B 3.2SN OR BX | PCB plug-in connector, male header, Dovetails for fixing blocks, Solder connection, 5.08 mm, No. of poles: 6, Solder pin length (l): 3.2 mm, tinned, Orange, Box | 4008190011901 | 50 pc(s). | IEC: 400 V / 18 A<br>UL: 300 V / 15 A | Box       |

**SL 5.00/90B**


Male connectors with 90° outlet direction. The solder pin length is optimised for wave flow soldering. The pin headers provide space for labelling and can be coded.

- 400 V (IEC) / 300 V (UL)
- 18 A (IEC) / 15 A (UL)

**General ordering data**

| Order No.                  | Type                       | Version   | GTIN (EAN)    | Qty.      | Product data                          | Packaging |
|----------------------------|----------------------------|---|---------------|-----------|---------------------------------------|-----------|
| <a href="#">1580900000</a> | SL 5.00/06/90B 3.2SN OR BX | PCB plug-in connector, male header, Dovetails for fixing blocks, Solder connection, 5.00 mm, No. of poles: 6, 90°, Solder pin length (l): 3.2 mm, tinned, Orange, Box | 4008190130695 | 50 pc(s). | IEC: 400 V / 18 A<br>UL: 300 V / 15 A | Box       |

**OMNIMATE Signal - series BL/SL 5.08  
BLZ 5.08/06/270 SN OR BX**

**Weidmüller Interface GmbH & Co. KG**  
Klingenbergstraße 16  
D-32758 Detmold  
Germany  
Fon: +49 5231 14-0  
Fax: +49 5231 14-292083  
www.weidmueller.com

**Mating connector (conditionally pluggable)**
**SL-SMT 5.08/90LF Tape**


High-temperature-resistant male header, packed in box or tape. In tape with 1.5 mm solder pin optimised for automatic assembly. 3.2 mm solder pin suitable for reflow and wave soldering. These male connectors provide space for labelling and can be coded.

- 400 V (IEC) / 300 V (UL)
- 19 A (IEC) / 15 A (UL)

**General ordering data**

| Order No.                  | Type                             | Version  | GTIN (EAN)    | Qty.       | Product data                          | Packaging |
|----------------------------|----------------------------------|--|---------------|------------|---------------------------------------|-----------|
| <a href="#">1775274001</a> | SL-SMT 5.08/06/90LF 1.5 SN BK RL | PCB plug-in connector, male header, Solder flange, Reflow solder connection, 5.08 mm, No. of poles: 6, 90°, Solder pin length (l): 1.5 mm, tinned, Black, Tape | 4032248167838 | 350 pc(s). | IEC: 400 V / 19 A<br>UL: 300 V / 15 A | Tape      |

**SLS 5.08/180F**


Male plugs with clamping-yoke screw wire-connect system. The male plugs provide space for labelling and can be coded.

- 0.2 - 2.5 mm<sup>2</sup> (IEC) / 26 - 12 AWG (UL)
- 400 V (IEC) / 300 V (UL)
- 21.5 A (IEC) / 15 A (UL)

**General ordering data**

| Order No.                  | Type                      | Version  | GTIN (EAN)    | Qty.      | Product data  | Packaging |
|----------------------------|---------------------------|--|---------------|-----------|---|-----------|
| <a href="#">1846400000</a> | SLS 5.08/06/180F SN OR BX | PCB plug-in connector, male plug, 5.08 mm, No. of poles: 6, 180°, Clamping yoke connection, Clamping range, rated connection, max.: 3.31 mm <sup>2</sup> , Box | 4032248362103 | 50 pc(s). | IEC: 400 V / 21.5 A / 0.2 - 2.5 mm <sup>2</sup><br>UL: 300 V / 14 A / AWG 26 - AWG 12 | Box       |

**OMNIMATE Signal - series BL/SL 5.08  
BLZ 5.08/06/270 SN OR BX**

**Weidmüller Interface GmbH & Co. KG**  
Klingenbergstraße 16  
D-32758 Detmold  
Germany  
Fon: +49 5231 14-0  
Fax: +49 5231 14-292083  
www.weidmueller.com

**Mating connector (conditionally pluggable)**
**SLS 5.08/180B**


Male plugs with clamping-yoke screw wire-connect system. The male plugs provide space for labelling and can be coded.

- 0.2 - 2.5 mm<sup>2</sup> (IEC) / 26 - 12 AWG (UL)
- 400 V (IEC) / 300 V (UL)
- 21.5 A (IEC) / 15 A (UL)

**General ordering data**

| Order No.                  | Type                      | Version  | GTIN (EAN)    | Qty.      | Product data  | Packaging |
|----------------------------|---------------------------|--|---------------|-----------|---|-----------|
| <a href="#">1627280000</a> | SLS 5.08/06/180B SN OR BX | PCB plug-in connector, male plug, 5.08 mm, No. of poles: 6, 180°, Clamping yoke connection, Clamping range, rated connection, max.: 3.31 mm <sup>2</sup> , Box | 4008190199791 | 50 pc(s). | IEC: 400 V / 21.5 A / 0.2 - 2.5 mm <sup>2</sup><br>UL: 300 V / 14 A / AWG 26 - AWG 12 | Box       |

**SLS 5.08TB KF35**


Male plugs with clamping-yoke screw wire-connect system. With clip-on feet for attaching the male plugs on rail. The male plugs provide space for labelling and can be coded.

- 0.2 - 2.5 mm<sup>2</sup> (IEC) / 26 - 12 AWG (UL)
- 400 V (IEC) / 300 V (UL)
- 21.5 A (IEC) / 15 A (UL)

**General ordering data**

| Order No.                  | Type                          | Version  | GTIN (EAN)    | Qty.      | Product data  | Packaging |
|----------------------------|-------------------------------|--|---------------|-----------|---|-----------|
| <a href="#">1846140000</a> | SLS 5.08/06/180TB KF SN OR BX | PCB plug-in connector, male plug, 5.08 mm, No. of poles: 6, 180°, Clamping yoke connection, Clamping range, rated connection, max.: 3.31 mm <sup>2</sup> , Box | 4032248362424 | 20 pc(s). | IEC: 400 V / 21.5 A / 0.2 - 2.5 mm <sup>2</sup><br>UL: 300 V / 14 A / AWG 26 - AWG 12 | Box       |

**OMNIMATE Signal - series BL/SL 5.08  
BLZ 5.08/06/270 SN OR BX**

**Weidmüller Interface GmbH & Co. KG**  
Klingenbergstraße 16  
D-32758 Detmold  
Germany  
Fon: +49 5231 14-0  
Fax: +49 5231 14-292083  
www.weidmueller.com

**Mating connector (conditionally pluggable)**
**SLZF 5.08/180B**


Male plugs with tension-clamp wire connection. The male plugs provide space for labelling and can be coded.

- 0.2 - 2.5 mm<sup>2</sup> (IEC) / 26 - 14 AWG (UL)
- 400 V (IEC) / 300 V (UL)
- 23 A (IEC) / 15 A (UL)

**General ordering data**

| Order No.                  | Type                       | Version  | GTIN (EAN)    | Qty.      | Product data  | Packaging |
|----------------------------|----------------------------|--|---------------|-----------|---|-----------|
| <a href="#">1710250000</a> | SLZF 5.08/06/180B SN OR BX | PCB plug-in connector, male plug, 5.08 mm, No. of poles: 6, 180°, Tension clamp connection, Clamping range, rated connection, max.: 3.31 mm <sup>2</sup> , Box | 4008190319564 | 50 pc(s). | IEC: 400 V / 23 A / 0.2 - 2.5 mm <sup>2</sup><br>UL: 300 V / 15 A / AWG 26 - AWG 12 | Box       |

**SL-SMT 5.08/180LF Box**


High-temperature-resistant male header, packed in box or tape. In tape with 1.5 mm solder pin optimised for automatic assembly. 3.2 mm solder pin suitable for reflow and wave soldering. These male connectors provide space for labelling and can be coded.

- 400 V (IEC) / 300 V (UL)
- 19 A (IEC) / 15 A (UL)

**General ordering data**

| Order No.                  | Type                             | Version  | GTIN (EAN)    | Qty.      | Product data                          | Packaging |
|----------------------------|----------------------------------|--|---------------|-----------|---------------------------------------|-----------|
| <a href="#">1838480000</a> | SL-SMT 5.08/06/180LF 3.2SN BK BX | PCB plug-in connector, male header, Solder flange, Reflow solder connection, 5.08 mm, No. of poles: 6, 180°, Solder pin length (l): 3.2 mm, tinned, Black, Box | 4032248348541 | 50 pc(s). | IEC: 400 V / 19 A<br>UL: 300 V / 15 A | Box       |
| <a href="#">1776402001</a> | SL-SMT 5.08/06/180LF 1.5SN BK BX | PCB plug-in connector, male header, Solder flange, Reflow solder connection, 5.08 mm, No. of poles: 6, 180°, Solder pin length (l): 1.5 mm, tinned, Black, Box | 4032248159185 | 50 pc(s). | IEC: 400 V / 19 A<br>UL: 300 V / 15 A | Box       |

**OMNIMATE Signal - series BL/SL 5.08  
BLZ 5.08/06/270 SN OR BX**

**Weidmüller Interface GmbH & Co. KG**  
Klingenbergstraße 16  
D-32758 Detmold  
Germany  
Fon: +49 5231 14-0  
Fax: +49 5231 14-292083  
www.weidmueller.com

**Mating connector (conditionally pluggable)**
**SLZF 5.08/270B**


Male plugs with tension-clamp wire connection. The male plugs provide space for labelling and can be coded.

- 0.2 - 2.5 mm<sup>2</sup> (IEC) / 26 - 14 AWG (UL)
- 400 V (IEC) / 300 V (UL)
- 23 A (IEC) / 15 A (UL)

**General ordering data**

| Order No.                  | Type                       | Version  | GTIN (EAN)    | Qty.      | Product data  | Packaging |
|----------------------------|----------------------------|--|---------------|-----------|---|-----------|
| <a href="#">1706180000</a> | SLZF 5.08/06/270B SN OR BX | PCB plug-in connector,<br>male plug, 5.08 mm,<br>No. of poles: 6, 270°,<br>Tension clamp connection,<br>Clamping range, rated<br>connection, max.: 3.31<br>mm <sup>2</sup> , Box | 4032248127931 | 50 pc(s). | IEC: 400 V / 20.5 A / 0.2 - 2.5 mm <sup>2</sup><br>UL: 300 V / 15 A / AWG 26 - AWG 12 | Box       |

**SL-SMT 5.00/90LF Tape**


High-temperature-resistant male header, packed in box or tape. In tape with 1.5 mm solder pin optimised for automatic assembly. 3.2 mm solder pin suitable for reflow and wave soldering. These male connectors provide space for labelling and can be coded.

- 400 V (IEC) / 300 V (UL)
- 19 A (IEC) / 15 A (UL)

**General ordering data**

| Order No.                  | Type                            | Version   | GTIN (EAN)    | Qty.       | Product data                          | Packaging |
|----------------------------|---------------------------------|---|---------------|------------|---------------------------------------|-----------|
| <a href="#">1797790000</a> | SL-SMT 5.00/06/90LF 1.5SN BK RL | PCB plug-in connector,<br>male header, Solder flange,<br>Reflow solder connection,<br>5.00 mm, No. of poles: 6,<br>90°, Solder pin length (l):<br>1.5 mm, tinned, Black, Tape | 4032248239795 | 350 pc(s). | IEC: 400 V / 19 A<br>UL: 300 V / 15 A | Tape      |

**OMNIMATE Signal - series BL/SL 5.08  
BLZ 5.08/06/270 SN OR BX**

**Weidmüller Interface GmbH & Co. KG**  
 Klingenbergstraße 16  
 D-32758 Detmold  
 Germany  
 Fon: +49 5231 14-0  
 Fax: +49 5231 14-292083  
 www.weidmueller.com

**Mating connector (conditionally pluggable)**
**SL-SMT 5.08/180LF Tape**


High-temperature-resistant male header, packed in box or tape. In tape with 1.5 mm solder pin optimised for automatic assembly. 3.2 mm solder pin suitable for reflow and wave soldering. These male connectors provide space for labelling and can be coded.

- 400 V (IEC) / 300 V (UL)
- 19 A (IEC) / 15 A (UL)

**General ordering data**

| Order No.                  | Type                              | Version   | GTIN (EAN)    | Qty.       | Product data                          | Packaging |
|----------------------------|-----------------------------------|---|---------------|------------|---------------------------------------|-----------|
| <a href="#">1776404001</a> | SL-SMT 5.08/06/180LF 1.5 SN BK RL | PCB plug-in connector, male header, Solder flange, Reflow solder connection, 5.08 mm, No. of poles: 6, 180°, Solder pin length (l): 1.5 mm, tinned, Black, Tape | 4032248163625 | 250 pc(s). | IEC: 400 V / 19 A<br>UL: 300 V / 15 A | Tape      |

**SLT 5.08B**


Male plugs with screw TOP wire connection. The male plug provides space for labelling and can be coded.

- 0.2 - 2.5 mm<sup>2</sup> (IEC) / 26 - 14 AWG (UL)
- 400 V (IEC) / 300 V (UL)
- 16 A (IEC) / 10 A (UL)

**General ordering data**

| Order No.                  | Type                      | Version   | GTIN (EAN)    | Qty.      | Product data  | Packaging |
|----------------------------|---------------------------|---|---------------|-----------|---|-----------|
| <a href="#">1611750000</a> | SLT 5.08/06/180B SN OR BX | PCB plug-in connector, male plug, 5.08 mm, No. of poles: 6, 180°, TOP connection, Clamping range, rated connection, max.: 2.5 mm <sup>2</sup> , Box | 4008190192631 | 50 pc(s). | IEC: 400 V / 16 A / 0.2 - 2.5 mm <sup>2</sup><br>UL: 300 V / 15 A / AWG 26 - AWG 14 | Box       |

**OMNIMATE Signal - series BL/SL 5.08  
BLZ 5.08/06/270 SN OR BX**

**Weidmüller Interface GmbH & Co. KG**  
Klingenbergstraße 16  
D-32758 Detmold  
Germany  
Fon: +49 5231 14-0  
Fax: +49 5231 14-292083  
www.weidmueller.com

**Mating connector (conditionally pluggable)**
**SLS 5.08/180FI**


Male plugs with clamping-yoke screw wire-connect system. The male plugs provide space for labelling and can be coded.

- 0.2 - 2.5 mm<sup>2</sup> (IEC) / 26 - 12 AWG (UL)
- 400 V (IEC) / 300 V (UL)
- 21.5 A (IEC) / 15 A (UL)

**General ordering data**

| Order No.                  | Type                       | Version  | GTIN (EAN)    | Qty.      | Product data  | Packaging |
|----------------------------|----------------------------|--|---------------|-----------|---|-----------|
| <a href="#">1846250000</a> | SLS 5.08/06/180FI SN OR BX | PCB plug-in connector, male plug, 5.08 mm, No. of poles: 6, 180°, Clamping yoke connection, Clamping range, rated connection, max.: 3.31 mm <sup>2</sup> , Box | 4032248362530 | 50 pc(s). | IEC: 400 V / 21.5 A / 0.2 - 2.5 mm <sup>2</sup><br>UL: 300 V / 14 A / AWG 26 - AWG 12 | Box       |

**OMNIMATE Signal - series BL/SL 5.08  
BLZ 5.08/06/270 SN OR BX**

**Weidmüller Interface GmbH & Co. KG**  
Klingenbergstraße 16  
D-32758 Detmold  
Germany  
Fon: +49 5231 14-0  
Fax: +49 5231 14-292083  
www.weidmueller.com

**Mating connector (fully pluggable)**
**SL-SMT 5.08/180 Box**


High-temperature-resistant, straight, open ended male header. Packed in box or tape. In tape with 1.5 mm solder pin optimised for automatic assembly. 3.2 mm solder pin suitable for reflow and wave soldering. These male connectors provide space for labelling and can be coded.

- 400 V (IEC) / 300 V (UL)
- 19 A (IEC) / 15 A (UL)

**General ordering data**

| Order No.                  | Type                           | Version  | GTIN (EAN)    | Qty.      | Product data                          | Packaging |
|----------------------------|--------------------------------|--|---------------|-----------|---------------------------------------|-----------|
| <a href="#">1775642001</a> | SL-SMT 5.08/06/180 1.5SN BK BX | PCB plug-in connector, male header, open side, Reflow solder connection, 5.08 mm, No. of poles: 6, 180°, Solder pin length (l): 1.5 mm, tinned, Black, Box | 4032248157587 | 50 pc(s). | IEC: 400 V / 19 A<br>UL: 300 V / 15 A | Box       |
| <a href="#">1838020000</a> | SL-SMT 5.08/06/180 3.2SN BK BX | PCB plug-in connector, male header, open side, Reflow solder connection, 5.08 mm, No. of poles: 6, 180°, Solder pin length (l): 3.2 mm, tinned, Black, Box | 4032248348084 | 50 pc(s). | IEC: 400 V / 19 A<br>UL: 300 V / 15 A | Box       |

**SL 5.08/90**


Male connectors with 90° outlet direction. The solder pin length is optimised for wave flow soldering. The pin headers provide space for labelling and can be coded.

- 400 V (IEC) / 300 V (UL)
- 18 A (IEC) / 15 A (UL)

**General ordering data**

| Order No.                  | Type                      | Version   | GTIN (EAN)    | Qty.      | Product data                          | Packaging |
|----------------------------|---------------------------|---|---------------|-----------|---------------------------------------|-----------|
| <a href="#">1508460000</a> | SL 5.08/06/90 3.2SN OR BX | PCB plug-in connector, male header, open side, Solder connection, 5.08 mm, No. of poles: 6, 90°, Solder pin length (l): 3.2 mm, tinned, Orange, Box | 4008190132767 | 50 pc(s). | IEC: 400 V / 18 A<br>UL: 300 V / 15 A | Box       |

**OMNIMATE Signal - series BL/SL 5.08  
BLZ 5.08/06/270 SN OR BX**

**Weidmüller Interface GmbH & Co. KG**  
Klingenbergstraße 16  
D-32758 Detmold  
Germany  
Fon: +49 5231 14-0  
Fax: +49 5231 14-292083  
www.weidmueller.com

**Mating connector (fully pluggable)**
**SLD 5.08/180G**


2-tier male header with parallel pin arrangement. The solder pin length is optimised for wave flow soldering. The pin headers provide space for labelling and can be coded.

- 400 V (IEC) / 300 V (UL)
- 11 A (IEC) / 10 A (UL)

**General ordering data**

| Order No.                  | Type                         | Version   | GTIN (EAN)    | Qty.      | Product data                          | Packaging |
|----------------------------|------------------------------|---|---------------|-----------|---------------------------------------|-----------|
| <a href="#">1602430000</a> | SLD 5.08/12/180G 3.2SN OR BX | PCB plug-in connector, male header, closed side, Solder connection, 5.08 mm, No. of poles: 12, 180°, Solder pin length (l): 3.2 mm, tinned, Orange, Box | 4008190045692 | 50 pc(s). | IEC: 400 V / 11 A<br>UL: 300 V / 10 A | Box       |

**SL-SMT 5.08/90G Tape**


High-temperature-resistant male header, packed in box or tape. In tape with 1.5 mm solder pin optimised for automatic assembly. 3.2 mm solder pin suitable for reflow and wave soldering. These male connectors provide space for labelling and can be coded.

- 400 V (IEC) / 300 V (UL)
- 19 A (IEC) / 15 A (UL)

**General ordering data**

| Order No.                  | Type                            | Version  | GTIN (EAN)    | Qty.       | Product data                          | Packaging |
|----------------------------|---------------------------------|--|---------------|------------|---------------------------------------|-----------|
| <a href="#">1775044001</a> | SL-SMT 5.08/06/90G 1.5 SN BK RL | PCB plug-in connector, male header, closed side, Reflow solder connection, 5.08 mm, No. of poles: 6, 90°, Solder pin length (l): 1.5 mm, tinned, Black, Tape | 4032248167760 | 350 pc(s). | IEC: 400 V / 19 A<br>UL: 300 V / 15 A | Tape      |

**OMNIMATE Signal - series BL/SL 5.08  
BLZ 5.08/06/270 SN OR BX**

**Weidmüller Interface GmbH & Co. KG**  
Klingenbergstraße 16  
D-32758 Detmold  
Germany  
Fon: +49 5231 14-0  
Fax: +49 5231 14-292083  
www.weidmueller.com

**Mating connector (fully pluggable)**
**SL 5.00/90**


Male connectors with 90° outlet direction. The solder pin length is optimised for wave flow soldering. The pin headers provide space for labelling and can be coded.

- 400 V (IEC) / 300 V (UL)
- 18 A (IEC) / 15 A (UL)

**General ordering data**

| Order No.                  | Type                      | Version  | GTIN (EAN)    | Qty.      | Product data                          | Packaging |
|----------------------------|---------------------------|--|---------------|-----------|---------------------------------------|-----------|
| <a href="#">1596180000</a> | SL 5.00/06/90 4.5SN BK BX | PCB plug-in connector, male<br>header, open side, Solder connection, 5.00 mm, No. of poles: 6, 90°, Solder pin length (l): 4.5 mm, tinned, Black, Box  | 4008190105655 | 50 pc(s). | IEC: 400 V / 18 A<br>UL: 300 V / 15 A | Box       |
| <a href="#">1571170000</a> | SL 5.00/06/90 3.2SN OR BX | PCB plug-in connector, male<br>header, open side, Solder connection, 5.00 mm, No. of poles: 6, 90°, Solder pin length (l): 3.2 mm, tinned, Orange, Box | 4008190112325 | 50 pc(s). | IEC: 400 V / 18 A<br>UL: 300 V / 15 A | Box       |

**SL-SMT 5.08/90 Box**


High-temperature-resistant, 90° angled, open male header  
Packed in box or tape. In tape with 1.5 mm solder pin optimised for automatic assembly. 3.2 mm solder pin suitable for reflow and wave soldering. These male connectors provide space for labelling and can be coded.

- 400 V (IEC) / 300 V (UL)
- 19 A (IEC) / 15 A (UL)

**General ordering data**

| Order No.                  | Type                          | Version  | GTIN (EAN)    | Qty.      | Product data                          | Packaging |
|----------------------------|-------------------------------|--|---------------|-----------|---------------------------------------|-----------|
| <a href="#">1774802001</a> | SL-SMT 5.08/06/90 1.5SN BK BX | PCB plug-in connector, male<br>header, open side, Reflow solder connection, 5.08 mm, No. of poles: 6, 90°, Solder pin length (l): 1.5 mm, tinned, Black, Box | 4032248155835 | 50 pc(s). | IEC: 400 V / 19 A<br>UL: 300 V / 15 A | Box       |
| <a href="#">1779990000</a> | SL-SMT 5.08/06/90 3.2SN BK BX | PCB plug-in connector, male<br>header, open side, Reflow solder connection, 5.08 mm, No. of poles: 6, 90°  | 4032248165315 | 50 pc(s). | IEC: 400 V / 19 A<br>UL: 300 V / 15 A | Box       |

**OMNIMATE Signal - series BL/SL 5.08  
BLZ 5.08/06/270 SN OR BX**

**Weidmüller Interface GmbH & Co. KG**  
Klingenbergstraße 16  
D-32758 Detmold  
Germany  
Fon: +49 5231 14-0  
Fax: +49 5231 14-292083  
www.weidmuller.com

**Mating connector (fully pluggable)**

Solder pin length (l): 3.2  
mm, tinned, Black, Box

**SL-SMT 5.08/90 Tape**


High-temperature-resistant, 90° angled, open male header  
Packed in box or tape. In tape with 1.5 mm solder pin  
optimised for automatic assembly. 3.2 mm solder pin  
suitable for reflow and wave soldering. These male  
connectors provide space for labelling and can be coded.

- 400 V (IEC) / 300 V (UL)
- 19 A (IEC) / 15 A (UL)

**General ordering data**

| Order No.                  | Type                           | Version   | GTIN (EAN)    | Qty.       | Product data                          | Packaging |
|----------------------------|--------------------------------|---|---------------|------------|---------------------------------------|-----------|
| <a href="#">1774804001</a> | SL-SMT 5.08/06/90 1.5 SN BK RL | PCB plug-in connector, male<br>header, open side, Reflow<br>solder connection, 5.08<br>mm, No. of poles: 6, 90°,<br>Solder pin length (l): 1.5<br>mm, tinned, Black, Tape | 4032248167692 | 350 pc(s). | IEC: 400 V / 19 A<br>UL: 300 V / 15 A | Tape      |

**SLD 5.08/90G**


2-tier male header with parallel pin arrangement. The  
solder pin length is optimised for wave flow soldering.  
The pin headers provide space for labelling and can be  
coded.

- 400 V (IEC) / 300 V (UL)
- 11 A (IEC) / 10 A (UL)

**General ordering data**

| Order No.                  | Type                        | Version   | GTIN (EAN)    | Qty.      | Product data                          | Packaging |
|----------------------------|-----------------------------|---|---------------|-----------|---------------------------------------|-----------|
| <a href="#">1601830000</a> | SLD 5.08/12/90G 3.2SN OR BX | PCB plug-in connector, male<br>header, closed side, Solder<br>connection, 5.08 mm, No.<br>of poles: 12, 90°, Solder pin<br>length (l): 3.2 mm, tinned,<br>Orange, Box | 4008190158798 | 50 pc(s). | IEC: 400 V / 11 A<br>UL: 300 V / 10 A | Box       |

**OMNIMATE Signal - series BL/SL 5.08  
BLZ 5.08/06/270 SN OR BX**

**Weidmüller Interface GmbH & Co. KG**  
Klingenbergstraße 16  
D-32758 Detmold  
Germany  
Fon: +49 5231 14-0  
Fax: +49 5231 14-292083  
www.weidmueller.com

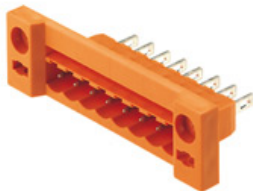
**Mating connector (fully pluggable)**
**SL-SMT 5.08/180G Tape**


High-temperature-resistant male header, packed in box or tape. In tape with 1.5 mm solder pin optimised for automatic assembly. 3.2 mm solder pin suitable for reflow and wave soldering. These male connectors provide space for labelling and can be coded.

- 400 V (IEC) / 300 V (UL)
- 19 A (IEC) / 15 A (UL)

**General ordering data**

| Order No.                  | Type                             | Version   | GTIN (EAN)    | Qty.       | Product data                          | Packaging |
|----------------------------|----------------------------------|---|---------------|------------|---------------------------------------|-----------|
| <a href="#">1775964001</a> | SL-SMT 5.08/06/180G 1.5 SN BK RL | PCB plug-in connector, male header, closed side, Reflow solder connection, 5.08 mm, No. of poles: 6, 180°, Solder pin length (l): 1.5 mm, tinned, Black, Tape | 4032248160174 | 250 pc(s). | IEC: 400 V / 19 A<br>UL: 300 V / 15 A | Tape      |

**SLDF 5.08**


Male connector for through-panel mounting with optional locking function. Internal connection as flat-blade or solder connection. These male connectors provide space for labelling and can be coded.

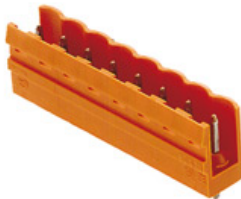
- 400 V (IEC) / 300 V (UL)
- 15 A (IEC) / 10 A (UL)

**General ordering data**

| Order No.                  | Type                     | Version   | GTIN (EAN)    | Qty.      | Product data                          | Packaging |
|----------------------------|--------------------------|---|---------------|-----------|---------------------------------------|-----------|
| <a href="#">1635780000</a> | SLDF 5.08 L/F 6 SN BK BX | PCB plug-in connector, male header, 5.08 mm, No. of poles: 6, 180°, Box | 4008190264215 | 50 pc(s). | IEC: 400 V / 15 A<br>UL: 300 V / 10 A | Box       |
| <a href="#">1599170000</a> | SLDF 5.08 L/F 6 SN OR BX | PCB plug-in connector, male header, 5.08 mm, No. of poles: 6, 180°, Box | 4008190179595 | 50 pc(s). | IEC: 400 V / 15 A<br>UL: 300 V / 10 A | Box       |

**OMNIMATE Signal - series BL/SL 5.08  
BLZ 5.08/06/270 SN OR BX**

**Weidmüller Interface GmbH & Co. KG**  
Klingenbergstraße 16  
D-32758 Detmold  
Germany  
Fon: +49 5231 14-0  
Fax: +49 5231 14-292083  
www.weidmueller.com

**Mating connector (fully pluggable)**
**SL 5.08/180**


Male connectors with straight outlet direction. The solder pin length is optimised for wave flow soldering. The pin headers provide space for labelling and can be coded.

- 400 V (IEC) / 300 V (UL)
- 18 A (IEC) / 15 A (UL)

**General ordering data**

| Order No.                  | Type                       | Version  | GTIN (EAN)    | Qty.      | Product data                          | Packaging |
|----------------------------|----------------------------|--|---------------|-----------|---------------------------------------|-----------|
| <a href="#">1517660000</a> | SL 5.08/06/180 3.2SN OR BX | PCB plug-in connector, male header, open side, Solder connection, 5.08 mm, No. of poles: 6, 180°, Solder pin length (l): 3.2 mm, tinned, Orange, Box | 4008190139445 | 50 pc(s). | IEC: 400 V / 18 A<br>UL: 300 V / 15 A | Box       |

**SL-SMT 5.08/90G Box**


High-temperature-resistant male header, packed in box or tape. In tape with 1.5 mm solder pin optimised for automatic assembly. 3.2 mm solder pin suitable for reflow and wave soldering. These male connectors provide space for labelling and can be coded.

- 400 V (IEC) / 300 V (UL)
- 19 A (IEC) / 15 A (UL)

**General ordering data**

| Order No.                  | Type                           | Version   | GTIN (EAN)    | Qty.      | Product data                          | Packaging |
|----------------------------|--------------------------------|---|---------------|-----------|---------------------------------------|-----------|
| <a href="#">1775042001</a> | SL-SMT 5.08/06/90G 1.5SN BK BX | PCB plug-in connector, male header, closed side, Reflow solder connection, 5.08 mm, No. of poles: 6, 90°, Solder pin length (l): 1.5 mm, tinned, Black, Box | 4032248156108 | 50 pc(s). | IEC: 400 V / 19 A<br>UL: 300 V / 15 A | Box       |
| <a href="#">1780220000</a> | SL-SMT 5.08/06/90G 3.2SN BK BX | PCB plug-in connector, male header, closed side, Reflow solder connection, 5.08 mm, No. of poles: 6, 90°, Solder pin length (l): 3.2 mm, tinned, Black, Box | 4032248165544 | 50 pc(s). | IEC: 400 V / 19 A<br>UL: 300 V / 15 A | Box       |

**OMNIMATE Signal - series BL/SL 5.08  
BLZ 5.08/06/270 SN OR BX**

**Weidmüller Interface GmbH & Co. KG**  
Klingenbergstraße 16  
D-32758 Detmold  
Germany  
Fon: +49 5231 14-0  
Fax: +49 5231 14-292083  
www.weidmueller.com

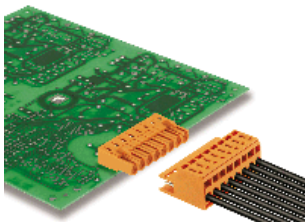
**Mating connector (fully pluggable)**
**SL-SMT 5.08/180 Tape**


High-temperature-resistant, straight, open ended male header. Packed in box or tape. In tape with 1.5 mm solder pin optimised for automatic assembly. 3.2 mm solder pin suitable for reflow and wave soldering. These male connectors provide space for labelling and can be coded.

- 400 V (IEC) / 300 V (UL)
- 19 A (IEC) / 15 A (UL)

**General ordering data**

| Order No.                  | Type                            | Version   | GTIN (EAN)    | Qty.       | Product data                          | Packaging |
|----------------------------|---------------------------------|---|---------------|------------|---------------------------------------|-----------|
| <a href="#">1775644001</a> | SL-SMT 5.08/06/180 1.5 SN BK RL | PCB plug-in connector, male header, open side, Reflow solder connection, 5.08 mm, No. of poles: 6, 180°, Solder pin length (l): 1.5 mm, tinned, Black, Tape | 4032248159628 | 250 pc(s). | IEC: 400 V / 19 A<br>UL: 300 V / 15 A | Tape      |

**SLZF 5.08/180**


Male plugs with tension-clamp wire connection. The male plugs provide space for labelling and can be coded.

- 0.2 - 2.5 mm<sup>2</sup> (IEC) / 26 - 14 AWG (UL)
- 400 V (IEC) / 300 V (UL)
- 23 A (IEC) / 15 A (UL)

**General ordering data**

| Order No.                  | Type                      | Version  | GTIN (EAN)    | Qty.      | Product data  | Packaging |
|----------------------------|---------------------------|--|---------------|-----------|---|-----------|
| <a href="#">1709410000</a> | SLZF 5.08/06/180 SN OR BX | PCB plug-in connector, male plug, 5.08 mm, No. of poles: 6, 180°, Tension clamp connection, Clamping range, rated connection, max.: 3.31 mm <sup>2</sup> , Box | 4008190390174 | 50 pc(s). | IEC: 400 V / 23 A / 0.2 - 2.5 mm <sup>2</sup><br>UL: 300 V / 15 A / AWG 26 - AWG 12 | Box       |
| <a href="#">1709640000</a> | SLZF 5.08/06/180 SN BK BX | PCB plug-in connector, male plug, 5.08 mm, No. of poles: 6, 180°, Tension clamp connection, Clamping range, rated connection, max.: 3.31 mm <sup>2</sup> , Box | 4008190318949 | 50 pc(s). | IEC: 400 V / 23 A / 0.2 - 2.5 mm <sup>2</sup><br>UL: 300 V / 15 A / AWG 26 - AWG 12 | Box       |

**OMNIMATE Signal - series BL/SL 5.08  
BLZ 5.08/06/270 SN OR BX**

**Weidmüller Interface GmbH & Co. KG**  
Klingenbergstraße 16  
D-32758 Detmold  
Germany  
Fon: +49 5231 14-0  
Fax: +49 5231 14-292083  
www.weidmueller.com

**Mating connector (fully pluggable)**
**SL 5.08/135**


Male connectors with 135° outlet direction. The solder pin length is optimised for wave flow soldering. The pin headers provide space for labelling and can be coded.

- 400 V (IEC) / 300 V (UL)
- 17 A (IEC) / 15 A (UL)

**General ordering data**

| Order No.                  | Type                       | Version  | GTIN (EAN)    | Qty.      | Product data                          | Packaging |
|----------------------------|----------------------------|--|---------------|-----------|---------------------------------------|-----------|
| <a href="#">1603100000</a> | SL 5.08/06/135 3.2SN OR BX | PCB plug-in connector, male header, open side, Solder connection, 5.08 mm, No. of poles: 6, 135°, Solder pin length (l): 3.2 mm, tinned, Orange, Box | 4008190101480 | 50 pc(s). | IEC: 400 V / 17 A<br>UL: 300 V / 15 A | Box       |

**SL-SMT 5.08/180G Box**


High-temperature-resistant male header, packed in box or tape. In tape with 1.5 mm solder pin optimised for automatic assembly. 3.2 mm solder pin suitable for reflow and wave soldering. These male connectors provide space for labelling and can be coded.

- 400 V (IEC) / 300 V (UL)
- 19 A (IEC) / 15 A (UL)

**General ordering data**

| Order No.                  | Type                            | Version  | GTIN (EAN)    | Qty.      | Product data                          | Packaging |
|----------------------------|---------------------------------|--|---------------|-----------|---------------------------------------|-----------|
| <a href="#">1838250000</a> | SL-SMT 5.08/06/180G 3.2SN BK BX | PCB plug-in connector, male header, closed side, Reflow solder connection, 5.08 mm, No. of poles: 6, 180°, Solder pin length (l): 3.2 mm, tinned, Black, Box | 4032248348312 | 50 pc(s). | IEC: 400 V / 19 A<br>UL: 300 V / 15 A | Box       |
| <a href="#">1775962001</a> | SL-SMT 5.08/06/180G 1.5SN BK BX | PCB plug-in connector, male header, closed side, Reflow solder connection, 5.08 mm, No. of poles: 6, 180°, Solder pin length (l): 1.5 mm, tinned, Black, Box | 4032248158959 | 50 pc(s). | IEC: 400 V / 19 A<br>UL: 300 V / 15 A | Box       |