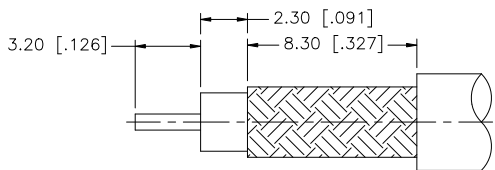
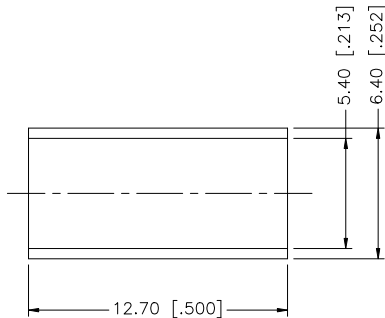
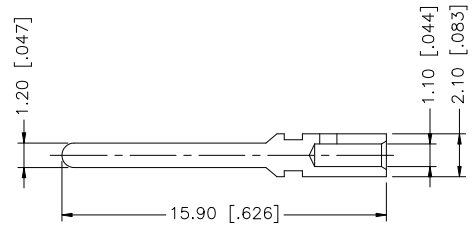
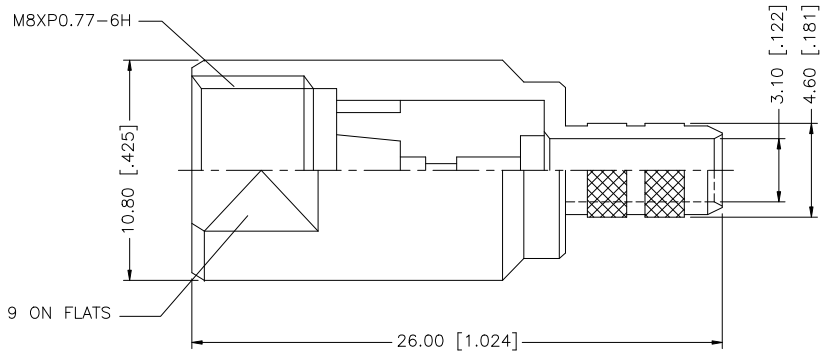


REV.	DATE	DESCRIPTION
NC	05/31/96	INITIAL RELEASE
A	07/31/07	UPDATE DRAWING FORMAT



RECOMMENDED CABLE STRIPPING DIMS



DESCRIPTION	MATERIAL	FINISH	QTY
8			
7			
6			
5			
4	FERRULE	COPPER	NICKEL 1
3	CONTACT PIN	BRASS	GOLD 1
2	INSULATOR	TEFLON	NATURAL 1
1	BODY	BRASS	NICKEL 1

UNLESS OTHERWISE SPECIFIED DIMENSIONS ARE IN MILLIMETERS. DIMENSIONS IN () ARE IN INCHES AND FOR CUSTOMER REFERENCE ONLY.

UNLESS OTHERWISE SPECIFIED TOLERANCES FOR MILLIMETERS ARE:
0.5 - 8mm ± 0.20mm
8 - 30mm ± 0.40mm
30 - 120mm ± 0.50mm

UNLESS OTHERWISE SPECIFIED TOLERANCES FOR INCHES ARE:
.020 - .315 = ± 0.007"
.315 - 1.180 = ± 0.015"
1.180 - 4.724 = ± 0.020"

DO NOT SCALE DRAWING

APPROVALS	DATE
DRAWN G.R.S.	07/31/07
CHECKED	
ISSUED	
SHEET 1 OF 1	
CAD FILE C:/192/192100.DWG	

Amphenol Connex

PART DESCRIPTION
**FME CRIMP PLUG
(FOR RG-58C/U CABLE)**

PART NO.
192100

DWG. NO. 192100.DWG	REV. A	SIZE A	SCALE NA
---------------------	--------	--------	----------