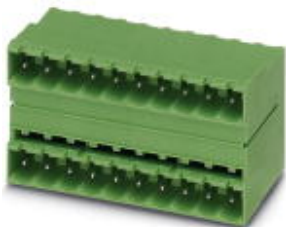


## Base strip - MDSTB 2,5/10-G1 - 1762774

Please be informed that the data shown in this PDF Document is generated from our Online Catalog. Please find the complete data in the user's documentation. Our General Terms of Use for Downloads are valid (<http://phoenixcontact.com/download>)



Header, Nominal current: 10 A, Rated voltage (III/2): 320 V, Number of positions: 10, Pitch: 5 mm, Color: green, Contact surface: Tin, Mounting: Soldering, In combination with MVSTB or FKCV plug components, both an MVSTBW (or FKCVW) and an MVSTBR plug (or FKCVR) must be used. Combination with TMSTBP plug components is not possible!


The figure shows a 10-pos. version with 20 contacts

### Why buy this product

- MDSTBW 2,5/...-G with stand-off
- G1 types without offset levels, for flush installation on the front of devices
- Add-on ejectors for high-pos. connectors should be mounted to the left and right



### Key Commercial Data

|                                      |   |
|--------------------------------------|---|
| Packing unit                         | 50 pc   |
| GTIN                                 | <br>4 017918 031350 |
| Weight per Piece (excluding packing) | 17.1 g  |
| Custom tariff number                 | 85366990  |
| Country of origin                    | Greece  |

### Technical data

#### Dimensions

|                          |          |
|--------------------------|----------|
| Length                   | 22 mm    |
| Pitch                    | 5.00 mm  |
| Dimension a              | 45 mm    |
| Constructional height    | 29 mm    |
| Length of the solder pin | 3.5 mm   |
| Pin dimensions           | 1 x 1 mm |
| Hole diameter            | 1.4 mm   |

#### General

|                             |                 |
|-----------------------------|-----------------|
| Range of articles           | MDSTB 2,5/..-G1 |
| Insulating material group   | I               |
| Rated surge voltage (III/3) | 4 kV            |

## Base strip - MDSTB 2,5/10-G1 - 1762774

### Technical data

#### General

|  |        |
|--|--------|
| Rated surge voltage (III/2)            | 4 kV   |
| Rated surge voltage (II/2)             | 4 kV   |
| Rated voltage (III/3)                  | 250 V  |
| Rated voltage (III/2)                  | 320 V  |
| Rated voltage (II/2)                   | 630 V  |
| Connection in acc. with standard       | EN-VDE |
| Nominal current I <sub>N</sub>         | 10 A   |
| Maximum load current                   | 10 A   |
| Insulating material                    | PA     |
| Flammability rating according to UL 94 | V0     |
| Color                                  | green  |
| Number of positions                    | 10     |

### Classifications

#### eCl@ss

|            |          |
|------------|----------|
| eCl@ss 4.0 | 272607xx |
| eCl@ss 4.1 | 27260701 |
| eCl@ss 5.0 | 27260701 |
| eCl@ss 5.1 | 27260701 |
| eCl@ss 6.0 | 27260704 |
| eCl@ss 7.0 | 27440402 |
| eCl@ss 8.0 | 27440402 |

#### ETIM

|          |          |
|----------|----------|
| ETIM 3.0 | EC001121 |
| ETIM 4.0 | EC002637 |
| ETIM 5.0 | EC002637 |

#### UNSPSC

|               |          |
|---------------|----------|
| UNSPSC 6.01   | 30211810 |
| UNSPSC 7.0901 | 39121409 |
| UNSPSC 11     | 39121409 |
| UNSPSC 12.01  | 39121409 |
| UNSPSC 13.2   | 39121409 |

### Approvals

#### Approvals

# Base strip - MDSTB 2,5/10-G1 - 1762774

## Approvals


Approvals


CSA / VDE Gutachten mit Fertigungsüberwachung / IECEx CB Scheme / CCA / EAC / cULus Recognized


Ex Approvals

Approvals submitted

## Approval details

|   |       |       |
|---|-------|-------|
| CSA  |       |       |
|   | B     | D     |
| Nominal current IN  | 10 A  | 10 A  |
| Nominal voltage UN  | 300 V | 300 V |

|   |       |
|---|-------|
| VDE Gutachten mit Fertigungsüberwachung  |       |
| Nominal current IN  | 10 A  |
| Nominal voltage UN  | 250 V |

|   |       |
|---|-------|
| IECEE CB Scheme  |       |
| Nominal current IN  | 10 A  |
| Nominal voltage UN  | 250 V |

|                    |       |
|--------------------|-------|
| CCA                |       |
| Nominal current IN | 10 A  |
| Nominal voltage UN | 250 V |

|     |
|-----|
| EAC |
|-----|

## Base strip - MDSTB 2,5/10-G1 - 1762774

### Approvals

|                                |       |       |
|--------------------------------|-------|-------|
| cULus Recognized               |       |       |
|                                | B     | D     |
| Nominal current I <sub>N</sub> | 15 A  | 10 A  |
| Nominal voltage U <sub>N</sub> | 300 V | 300 V |

### Accessories

#### Accessories

#### Coding element

Coding star - CR-MSTB - 1734401



Coding section, inserted into the recess in the header or the inverted plug, red insulating material

---

#### Filler plug

Accessories - MSTB-BL - 1755477



Keying cap, for forming sections, plugs onto header pin, green insulating material

---

#### Labeled terminal marker

Marker card - SK 5/3,8:FORTL.ZAHLEN - 0804183



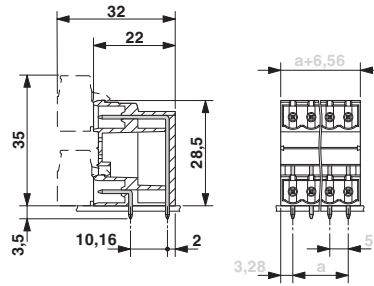
Marker card, Card, white, labeled, Horizontal: Consecutive numbers 1 - 10, 11 - 20, etc. up to 91 - (99)100, Mounting type: Adhesive, for terminal block width: 5 mm, Lettering field: 5 x 3.8 mm

---

### Drawings

# Base strip - MDSTB 2,5/10-G1 - 1762774

Dimensional drawing



Drilling diagram

