

Pin strip - PST 1,3/24-5,0 - 1935624

Please be informed that the data shown in this PDF Document is generated from our Online Catalog. Please find the complete data in the user's documentation. Our General Terms of Use for Downloads are valid (<http://phoenixcontact.com/download>)


Header, Nominal current: 12 A, Rated voltage (III/2): 320 V, Number of positions: 24, Pitch: 5 mm, Color: black, Contact surface: Tin, Mounting: Soldering, Voltage and current depend on the plug-in terminal block used.



The figure shows a 10-position version of the product



Key commercial data

| | |
|--------------------------------------|---|
| Packing unit | 50 pc |
| Minimum order quantity | 50 pc |
| GTIN |  4 017918 920555 |
| Weight per Piece (excluding packing) | 3.98 g |
| Custom tariff number | 85366990 |
| Country of origin | Germany |

Technical data

Dimensions

| | |
|----------------|--------|
| Length | 2.8 mm |
| Pitch | 5 mm |
| Dimension a | 115 mm |
| Pin dimensions | 1,3 mm |
| Hole diameter | 1.5 mm |

General

| | |
|-----------------------------|--------------|
| Range of articles | PST 1,3/..-V |
| Insulating material group | IIIa |
| Rated surge voltage (III/3) | 4 kV |
| Rated surge voltage (III/2) | 4 kV |
| Rated surge voltage (II/2) | 4 kV |
| Rated voltage (III/3) | 250 V |
| Rated voltage (III/2) | 320 V |
| Rated voltage (II/2) | 400 V |

Pin strip - PST 1,3/24-5,0 - 1935624

Technical data

General

| | |
|---|---------------------------------|
| Connection in acc. with standard | EN-VDE |
| Nominal current I _N | 12 A (depends on the plug used) |
| Maximum load current | 12 A (depends on the plug used) |
| Insulating material | PA |
| Inflammability class according to UL 94 | V0 |
| Color | black |
| Number of positions | 24 |

Classifications

eCl@ss

| | |
|------------|----------|
| eCl@ss 4.0 | 272607xx |
| eCl@ss 4.1 | 27260701 |
| eCl@ss 5.0 | 27260701 |
| eCl@ss 5.1 | 27260701 |
| eCl@ss 6.0 | 27260704 |
| eCl@ss 7.0 | 27440402 |
| eCl@ss 8.0 | 27440402 |

ETIM

| | |
|----------|----------|
| ETIM 3.0 | EC001121 |
| ETIM 4.0 | EC002637 |
| ETIM 5.0 | EC002637 |

UNSPSC

| | |
|---------------|----------|
| UNSPSC 6.01 | 30211801 |
| UNSPSC 7.0901 | 39121432 |
| UNSPSC 11 | 34131203 |
| UNSPSC 12.01 | 39121432 |
| UNSPSC 13.2 | 39121432 |

Approvals

Approvals

Approvals

CSA / UL Recognized / SEV / cUL Recognized / EAC / cULus Recognized


Ex Approvals


Pin strip - PST 1,3/24-5,0 - 1935624

Approvals


Approvals submitted

Approval details

| | | |
|---|-------|-------|
| CSA  | | |
| | B | D |
| Nominal current IN | 5 A | 5 A |
| Nominal voltage UN | 300 V | 300 V |

| | | |
|---|-------|-------|
| UL Recognized  | | |
| | B | D |
| Nominal current IN | 16 A | 10 A |
| Nominal voltage UN | 300 V | 300 V |

| | |
|--------------------|-------|
| SEV | |
| Nominal current IN | 10 A |
| Nominal voltage UN | 250 V |

| | | |
|--|-------|-------|
| cUL Recognized  | | |
| | B | D |
| Nominal current IN | 16 A | 10 A |
| Nominal voltage UN | 300 V | 300 V |

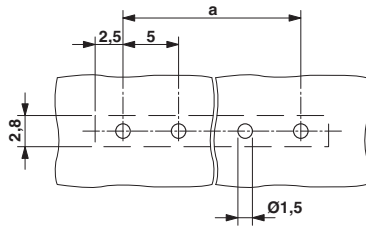
| |
|-----|
| EAC |
|-----|

| |
|--|
| cULus Recognized  |
|--|

Drawings

Pin strip - PST 1,3/24-5,0 - 1935624

Drilling diagram



Dimensioned drawing

