

# Housing - MCV 1,5/20-GF-3,5 - 1843402

Please be informed that the data shown in this PDF Document is generated from our Online Catalog. Please find the complete data in the user's documentation. Our General Terms of Use for Downloads are valid (<http://phoenixcontact.com/download>)

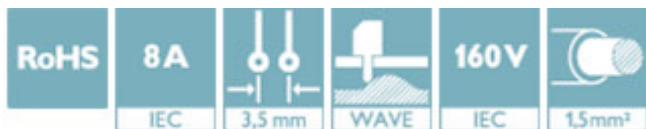
Header, nominal current: 8 A, rated voltage (III/2): 160 V, number of positions: 20, pitch: 3.5 mm, Color: green, Contact surface: Tin, mounting: Wave soldering



The figure shows a 10-position version of the product

## Why buy this product

- Well-known mounting principle allows worldwide use
- Screwable flange for superior mechanical stability
- Vertical connection enables multi-row arrangement on the PCB
- Maximum flexibility when it comes to device design – one header for connectors with different connection technologies



## Key Commercial Data

|              |               |
|--------------|---------------|
| Packing unit | 50 STK        |
| GTIN         |               |
| GTIN         | 4017918102371 |

## Technical data

### Dimensions

|                          |              |
|--------------------------|--------------|
| Length [ l ]             | 7.25 mm      |
| Pitch                    | 3.5 mm       |
| Dimension a              | 66.50 mm     |
| Width [ w ]              | 80.30 mm     |
| Constructional height    | 9.2 mm       |
| Height [ h ]             | 12.6 mm      |
| Length of the solder pin | 3.4 mm       |
| Pin dimensions           | 0,8 x 0,8 mm |
| Hole diameter            | 1.2 mm       |

### General

|                   |                |
|-------------------|----------------|
| Range of articles | MCV 1,5/...-GF |
|-------------------|----------------|

# Housing - MCV 1,5/20-GF-3,5 - 1843402

## Technical data

### General

|  |        |
|--|--------|
| Insulating material group              | IIIa   |
| Rated surge voltage (III/3)            | 2.5 kV |
| Rated surge voltage (III/2)            | 2.5 kV |
| Rated surge voltage (II/2)             | 2.5 kV |
| Rated voltage (III/3)                  | 160 V  |
| Rated voltage (III/2)                  | 160 V  |
| Rated voltage (II/2)                   | 250 V  |
| Connection in acc. with standard       | EN-VDE |
| Nominal current $I_N$                  | 8 A    |
| Maximum load current                   | 8 A    |
| Insulating material                    | PBT    |
| Flammability rating according to UL 94 | V0     |
| Color                                  | green  |
| Number of positions                    | 20     |

### Standards and Regulations

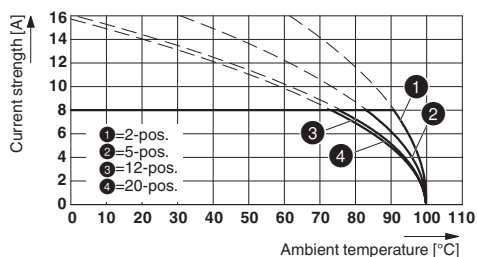
|  |        |
|--|--------|
| Connection in acc. with standard       | EN-VDE |
|  | CSA    |
| Flammability rating according to UL 94 | V0     |

### Environmental Product Compliance

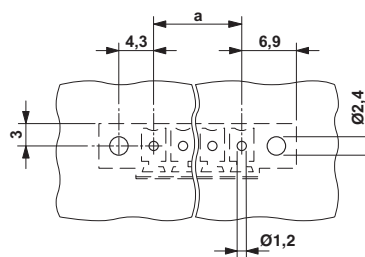
|            |   |
|------------|---|
| China RoHS | Environmentally Friendly Use Period = 50  |
|            | For details about hazardous substances go to tab "Downloads", Category "Manufacturer's declaration" |

## Drawings

Diagram



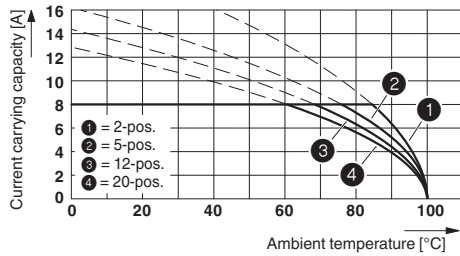
Drilling diagram



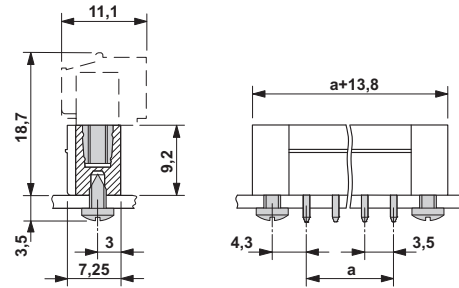
Type: MC 1,5/...-STF-3,5 with MCV 1,5/...-GF-3,5

# Housing - MCV 1,5/20-GF-3,5 - 1843402

Diagram



Dimensional drawing



## Approvals

### Approvals

#### Approvals

CSA / VDE Gutachten mit Fertigungsüberwachung / IECEx CB Scheme / CCA / cULus Recognized / EAC

#### Ex Approvals

### Approval details

|                                |       |   |       |
|--------------------------------|-------|---|-------|
| CSA                            |       | <a href="http://www.csagroup.org/services/testing-and-certification/certified-product-listing/">http://www.csagroup.org/services/testing-and-certification/certified-product-listing/</a> | 13631 |
|                                | B     | D   |       |
| Nominal current I <sub>N</sub> | 8 A   | 8 A   |       |
| Nominal voltage U <sub>N</sub> | 300 V | 300 V   |       |


|   |       |   |          |
|---|-------|---|----------|
| VDE Gutachten mit Fertigungsüberwachung |       | <a href="http://www.vde.com/en/Institute/OnlineService/VDE-approved-products/Pages/Online-Search.aspx">http://www.vde.com/en/Institute/OnlineService/VDE-approved-products/Pages/Online-Search.aspx</a> | 40011723 |
| Nominal current I <sub>N</sub>          | 8 A   |   |          |
| Nominal voltage U <sub>N</sub>          | 160 V |   |          |

|                                |       |   |                |
|--------------------------------|-------|---|----------------|
| IECEE CB Scheme                |       | <a href="http://www.iecee.org/">http://www.iecee.org/</a> | DE1-58415-B1B2 |
| Nominal current I <sub>N</sub> | 8 A   |   |                |
| Nominal voltage U <sub>N</sub> | 160 V |   |                |

# Housing - MCV 1,5/20-GF-3,5 - 1843402

## Approvals

|                    |                |
|--------------------|----------------|
| CCA                | CCA/ DE1 34219 |
| Nominal current IN | 8 A            |
| Nominal voltage UN | 160 V          |

|                    |   |   |                 |
|--------------------|---|---|-----------------|
| cULus Recognized   |  | <a href="http://database.ul.com/cgi-bin/XYV/template/LISEXT/1FRAME/index.htm">http://database.ul.com/cgi-bin/XYV/template/LISEXT/1FRAME/index.htm</a> | E60425-20110128 |
|                    | B   | D   |                 |
| Nominal current IN | 8 A   | 8 A   |                 |
| Nominal voltage UN | 300 V   | 300 V   |                 |

|     |   |         |
|-----|---|---------|
| EAC |  | B.01742 |
|-----|---|---------|

Phoenix Contact 2017 © - all rights reserved  
<http://www.phoenixcontact.com>

PHOENIX CONTACT GmbH & Co. KG  
Flachsmarktstr. 8  
32825 Blomberg  
Germany  
Tel. +49 5235 300  
Fax +49 5235 3 41200  
<http://www.phoenixcontact.com>