

## Base strip - MSTBA 2,5/ 4-G THT - 1927519

Please be informed that the data shown in this PDF Document is generated from our Online Catalog. Please find the complete data in the user's documentation. Our General Terms of Use for Downloads are valid (<http://phoenixcontact.com/download>)




Header, Nominal current: 12 A, Rated voltage (III/2): 320 V, Number of positions: 4, Pitch: 5 mm, Color: black, Contact surface: Tin, Mounting: SMD/THT/THR, User information and design recommendations for through hole reflow technology can be found under "Downloads"

The illustration shows an 8-position version



### Key commercial data

|                                      |   |
|--------------------------------------|---|
| Packing unit                         | 50 pc   |
| Minimum order quantity               | 50 pc   |
| GTIN                                 | <br>4 017918 821487 |
| Weight per Piece (excluding packing) | 3.0 g   |
| Custom tariff number                 | 85366990  |
| Country of origin                    | Germany   |
| Note                                 | Made to Order (non-returnable)  |

### Technical data

#### Dimensions

|                |          |
|----------------|----------|
| Length         | 12 mm    |
| Pitch          | 5 mm     |
| Dimension a    | 15 mm    |
| Pin dimensions | 1 x 1 mm |
| Hole diameter  | 1.4 mm   |

#### General

|                             |                    |
|-----------------------------|--------------------|
| Range of articles           | MSTBA 2,5/..-G-THT |
| Insulating material group   | IIIa               |
| Rated surge voltage (III/3) | 4 kV               |
| Rated surge voltage (III/2) | 4 kV               |
| Rated surge voltage (II/2)  | 4 kV               |
| Rated voltage (III/3)       | 250 V              |
| Rated voltage (III/2)       | 320 V              |

# Base strip - MSTBA 2,5/ 4-G THT - 1927519

## Technical data

### General

|   |                     |
|---|---------------------|
| Rated voltage (II/2)                    | 400 V               |
| Connection in acc. with standard        | EN-VDE              |
| Nominal current I <sub>N</sub>          | 12 A (per position) |
| Maximum load current                    | 12 A                |
| Insulating material                     | PA                  |
| Inflammability class according to UL 94 | V0                  |
| Color                                   | black               |
| Number of positions                     | 4                   |

## Classifications

### eCl@ss

|            |          |
|------------|----------|
| eCl@ss 4.0 | 272607xx |
| eCl@ss 4.1 | 27260701 |
| eCl@ss 5.0 | 27260701 |
| eCl@ss 5.1 | 27260701 |
| eCl@ss 6.0 | 27260704 |
| eCl@ss 7.0 | 27440402 |
| eCl@ss 8.0 | 27440402 |

### ETIM

|          |          |
|----------|----------|
| ETIM 3.0 | EC001121 |
| ETIM 4.0 | EC002637 |
| ETIM 5.0 | EC002637 |

### UNSPSC

|               |          |
|---------------|----------|
| UNSPSC 6.01   | 30211810 |
| UNSPSC 7.0901 | 39121409 |
| UNSPSC 11     | 39121409 |
| UNSPSC 12.01  | 39121409 |
| UNSPSC 13.2   | 39121409 |

## Approvals

### Approvals

#### Approvals

UL Recognized / VDE Gutachten mit Fertigungsüberwachung / cUL Recognized / IECCE CB Scheme / CCA / EAC / cULus Recognized


#### Ex Approvals


# Base strip - MSTBA 2,5/ 4-G THT - 1927519


## Approvals


Approvals submitted

### Approval details

|   |       |       |
|---|-------|-------|
| UL Recognized  |       |       |
|   | B     | D     |
| Nominal current I <sub>N</sub>  | 15 A  | 10 A  |
| Nominal voltage U <sub>N</sub>  | 300 V | 300 V |

|   |       |
|---|-------|
| VDE Gutachten mit Fertigungsüberwachung  |       |
| Nominal current I <sub>N</sub>  | 12 A  |
| Nominal voltage U <sub>N</sub>  | 250 V |

|  |       |       |
|--|-------|-------|
| cUL Recognized  |       |       |
|  | B     | D     |
| Nominal current I <sub>N</sub>   | 15 A  | 10 A  |
| Nominal voltage U <sub>N</sub>   | 300 V | 300 V |

|   |       |
|---|-------|
| IECEE CB Scheme  |       |
| Nominal current I <sub>N</sub>  | 12 A  |
| Nominal voltage U <sub>N</sub>  | 250 V |

|                                |       |
|--------------------------------|-------|
| CCA                            |       |
| Nominal current I <sub>N</sub> | 12 A  |
| Nominal voltage U <sub>N</sub> | 250 V |

|     |  |
|-----|--|
| EAC |  |
|-----|--|

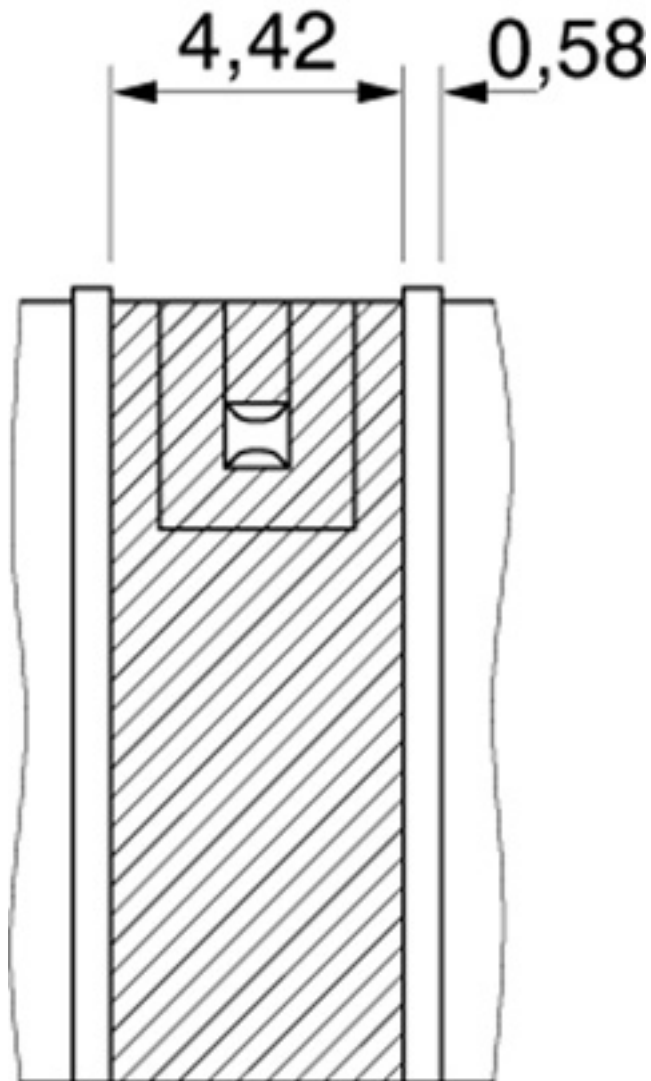
# Base strip - MSTBA 2,5/ 4-G THT - 1927519

## Approvals

cULus Recognized us

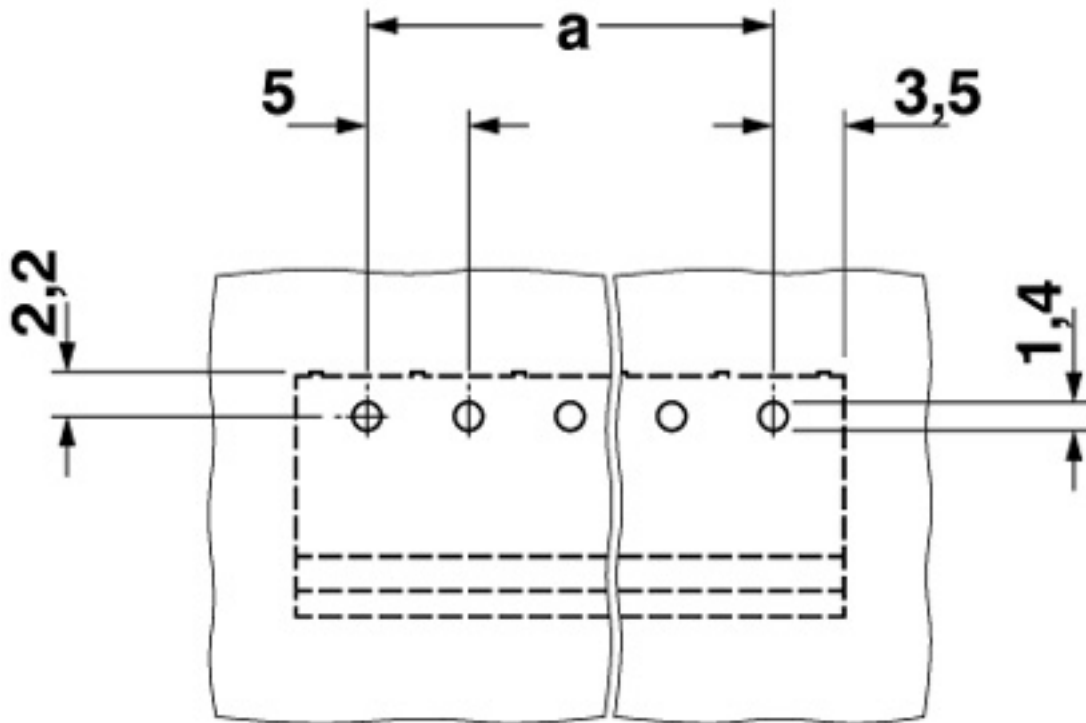
## Drawings

Dimensioned drawing



# Base strip - MSTBA 2,5/ 4-G THT - 1927519

Drilling diagram



Dimensioned drawing

