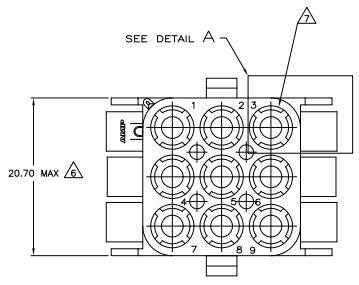
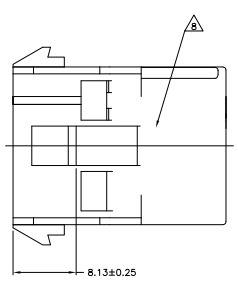
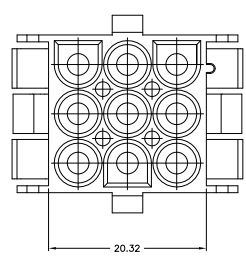
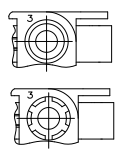


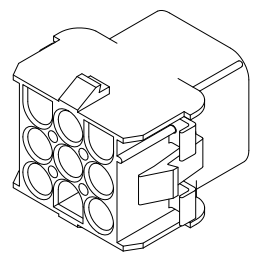
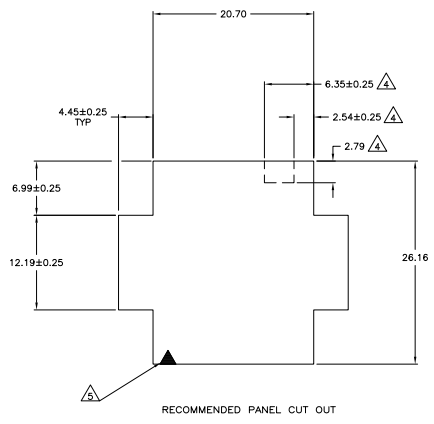
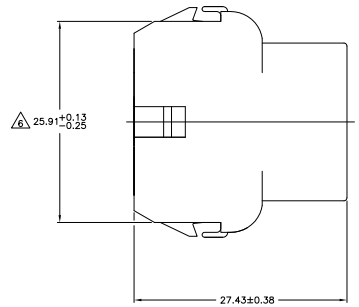
REV	DATE	DESCRIPTION	BY	CHK	APP
CM 5.3					
V3		REVISED PER EDD-11-004820	11MM11	RK	HMR



- MATES WITH APPROPRIATE UNIVERSAL MATE-N-LOK® PLUG.
 - RECOMMENDED PANEL THICKNESS 0.76 - 2.29.
 - PANEL MUST BE PUNCHED SO THAT THE HOUSING ENTERS THE PANEL IN THE SAME DIRECTION AS THE PUNCH.
- ▲ OPTIONAL FOR KEYING HOUSING IN PANEL.
 - ▲ CIRCUIT NUMBER 1 LOCATION.
 - ▲ DIMENSION REPRESENTS POTENTIAL MAXIMUM GROWTH DUE TO MOISTURE ABSORPTION.
 - ▲ FOUR RIBS EQUALLY SPACED, NO SPECIFIC ORIENTATION, NO RIBS OR SIX RIBS EQUALLY SPACED, NO SPECIFIC ORIENTATION, OPTIONAL.
 - ▲ UNDERWRITERS RECOGNIZED COMPONENT LOGO AND CSA CERTIFICATION LOGO TO BE LOCATED ONCE EACH ON SIDE OF HOUSING.



DETAIL A
 OPTIONAL CONSTRUCTIONS



3-DIMENSIONAL MODEL
 NTS

BLACK	1-350782-9
GRAY	1-350782-8
BLUE	1-350782-6
GREEN	1-350782-5
YELLOW	1-350782-4
ORANGE	1-350782-3
RED	1-350782-2
BROWN	1-350782-1
NATURAL	350782-1
COLOR	PART NO.

MM	IN	MM	IN
6.35	.250	—	—
4.45	.175	27.43	1.080
2.79	.110	26.16	1.030
2.54	.100	25.91	1.020
2.29	.090	20.70	.815
0.76	.030	20.32	.800
0.38	.015	12.19	.480
0.25	.010	6.13	.320
0.13	.005	6.99	.275

CONVERSION TABLE



THIS DRAWING IS A CONTROLLED DOCUMENT.

APPROVED FOR RELEASE	DATE	BY	CHK	APP

TE Connectivity
 CAP.9 CIRCUIT,
 UNIVERSAL MATE-N-LOK(TM)

SIZE: 4.1 SHEET 1 OF 1

CUSTOMER DRAWING: A100779 Q=350782