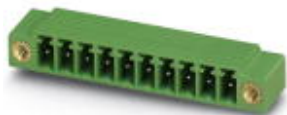


## Base strip - MC 1,5/ 5-GF-3,81 - 1827897

Please be informed that the data shown in this PDF Document is generated from our Online Catalog. Please find the complete data in the user's documentation. Our General Terms of Use for Downloads are valid (<http://phoenixcontact.com/download>)

Header, Nominal current: 8 A, Rated voltage (III/2): 160 V, Number of positions: 5, Pitch: 3.81 mm, Color: green, Contact surface: Tin, Mounting: Soldering




The figure shows a 10-position version of the product

### Why buy this product

- Versions with engagement noses for locking plugs with self-locking flanges
- Plug-in direction parallel and vertical to the PCB
- Low-profile pin strips with compact pitches
- Individual position coding by inserting coding profiles



### Key commercial data

|                                      |   |
|--------------------------------------|---|
| Packing unit                         | 250 pc  |
| GTIN                                 | <br>4 017918 050344 |
| Weight per Piece (excluding packing) | 2.26 g  |
| Custom tariff number                 | 85366990  |
| Country of origin                    | Germany   |

### Technical data

#### Dimensions

|                |              |
|----------------|--------------|
| Length         | 9.2 mm       |
| Pitch          | 3.81 mm      |
| Dimension a    | 15.24 mm     |
| Pin dimensions | 0,8 x 0,8 mm |
| Hole diameter  | 1.2 mm       |

#### General

|                             |              |
|-----------------------------|--------------|
| Range of articles           | MC 1,5/...GF |
| Insulating material group   | IIIa         |
| Rated surge voltage (III/3) | 2.5 kV       |
| Rated surge voltage (III/2) | 2.5 kV       |

# Base strip - MC 1,5/ 5-GF-3,81 - 1827897

## Technical data

### General

|   |        |
|---|--------|
| Rated surge voltage (II/2)              | 2.5 kV |
| Rated voltage (III/3)                   | 160 V  |
| Rated voltage (III/2)                   | 160 V  |
| Rated voltage (II/2)                    | 250 V  |
| Connection in acc. with standard        | EN-VDE |
| Nominal current I <sub>N</sub>          | 8 A    |
| Maximum load current                    | 8 A    |
| Insulating material                     | PBT    |
| Inflammability class according to UL 94 | V0     |
| Color                                   | green  |
| Number of positions                     | 5      |

## Classifications

### eCl@ss

|            |          |
|------------|----------|
| eCl@ss 4.0 | 272607xx |
| eCl@ss 4.1 | 27260701 |
| eCl@ss 5.0 | 27260701 |
| eCl@ss 5.1 | 27260701 |
| eCl@ss 6.0 | 27260704 |
| eCl@ss 7.0 | 27440402 |
| eCl@ss 8.0 | 27440402 |

### ETIM

|          |          |
|----------|----------|
| ETIM 3.0 | EC001121 |
| ETIM 4.0 | EC002637 |
| ETIM 5.0 | EC002637 |

### UNSPSC

|               |          |
|---------------|----------|
| UNSPSC 6.01   | 30211810 |
| UNSPSC 7.0901 | 39121409 |
| UNSPSC 11     | 39121409 |
| UNSPSC 12.01  | 39121409 |
| UNSPSC 13.2   | 39121409 |

## Approvals

### Approvals

### Approvals

CSA / UL Recognized / VDE Gutachten mit Fertigungsüberwachung / cUL Recognized / IECCE CB Scheme / CCA / EAC / cULus Recognized

# Base strip - MC 1,5/ 5-GF-3,81 - 1827897

## Approvals

Ex Approvals

Approvals submitted

### Approval details

|                    |       |       |
|--------------------|-------|-------|
| CSA                |       |       |
|                    | B     | D     |
| Nominal current IN | 8 A   | 8 A   |
| Nominal voltage UN | 300 V | 300 V |

|                    |       |       |
|--------------------|-------|-------|
| UL Recognized      |       |       |
|                    | B     | D     |
| Nominal current IN | 8 A   | 8 A   |
| Nominal voltage UN | 300 V | 300 V |

|   |       |  |
|---|-------|--|
| VDE Gutachten mit Fertigungsüberwachung |       |  |
| Nominal current IN                      | 8 A   |  |
| Nominal voltage UN                      | 160 V |  |

|                    |       |       |
|--------------------|-------|-------|
| cUL Recognized     |       |       |
|                    | B     | D     |
| Nominal current IN | 8 A   | 8 A   |
| Nominal voltage UN | 300 V | 300 V |

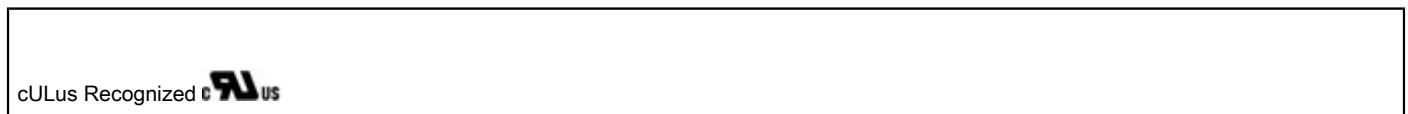
|                    |       |  |
|--------------------|-------|--|
| IECEE CB Scheme    |       |  |
| Nominal current IN | 8 A   |  |
| Nominal voltage UN | 160 V |  |

## Base strip - MC 1,5/ 5-GF-3,81 - 1827897

### Approvals

|                                |       |
|--------------------------------|-------|
| CCA                            |       |
| Nominal current I <sub>N</sub> | 8 A   |
| Nominal voltage U <sub>N</sub> | 160 V |

|     |
|-----|
| EAC |
|-----|



### Accessories

#### Accessories

#### Coding element

Coding profile - CP-MSTB - 1734634



Coding profile, is inserted into the slot on the plug or inverted header, red insulating material

#### Labeled terminal marker

Marker card - SK 3,81/2,8:FORTL.ZAHLEN - 0804109



Marker card, Card, white, labeled, Horizontal: Consecutive numbers 1 - 10, 11 - 20, etc. up to 91 - (99)100, Mounting type: Adhesive, for terminal block width: 3.81 mm, Lettering field: 3.81 x 2.8 mm

Fiber optics - MC 1,5/10-LWL 1,5-3,81 - 1841174

Fiber optics, Pitch: 3.81 mm, Number of positions: 10, Dimension a: 1.5 mm, Color: transparent



## Base strip - MC 1,5/ 5-GF-3,81 - 1827897

### Accessories

Fiber optics - MC 1,5/10-LWL 2,3-3,81 - 1841190

Fiber optics, Pitch: 3.81 mm, Number of positions: 10, Dimension a: 2.3 mm, Color: transparent



Fiber optics - MC 1,5/10-LWL 4-3,81 - 1841213

Fiber optics, Pitch: 3.81 mm, Number of positions: 10, Dimension a: 4 mm, Color: transparent



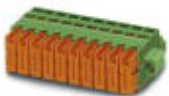
### Additional products

Printed-circuit board connector - MCC 1/ 5-STZF-3,81 - 1852396



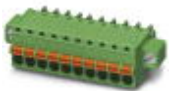
Plug component, Nominal current: 8 A, Rated voltage (III/2): 160 V, Number of positions: 5, Pitch: 3.81 mm, Connection method: Crimp connection, Color: green, Corresponding female crimp contacts with current [A] and conductor cross section range [mm<sup>2</sup>] data: 5A/MCC-MT 0,2-0,35 (1859988); 8A/MCC-MT 0,5-1,0 (1859991)

Printed-circuit board connector - QC 0,5/ 5-STF-3,81 - 1897571



Plug component, Nominal current: 6 A, Rated voltage (III/2): 200 V, Number of positions: 5, Pitch: 3.81 mm, Connection method: Insulation displacement connection QUICKON, Color: green, Contact surface: Tin

Printed-circuit board connector - FK-MCP 1,5/ 5-STF-3,81 - 1851261



Plug component, Nominal current: 8 A, Rated voltage (III/2): 160 V, Number of positions: 5, Pitch: 3.81 mm, Connection method: Spring-cage connection, Color: green, Contact surface: Tin

# Base strip - MC 1,5/ 5-GF-3,81 - 1827897

## Accessories

Printed-circuit board connector - FRONT-MC 1,5/ 5-STF-3,81 - 1850880

Plug component, Nominal current: 8 A, Rated voltage (III/2): 160 V, Number of positions: 5, Pitch: 3.81 mm, Connection method: Screw connection, Color: green, Contact surface: Tin



Printed-circuit board connector - MCVW 1,5/ 5-STF-3,81 - 1828524

Plug component, Nominal current: 8 A, Rated voltage (III/2): 160 V, Number of positions: 5, Pitch: 3.81 mm, Connection method: Screw connection, Color: green, Contact surface: Tin



Printed-circuit board connector - MCVR 1,5/ 5-STF-3,81 - 1828375

Plug component, Nominal current: 8 A, Rated voltage (III/2): 160 V, Number of positions: 5, Pitch: 3.81 mm, Connection method: Screw connection, Color: green, Contact surface: Tin



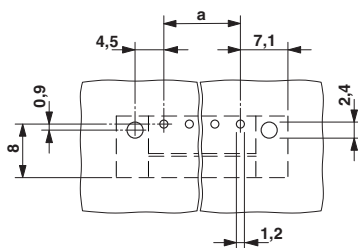
Printed-circuit board connector - MC 1,5/ 5-STF-3,81 - 1827732

Plug component, Nominal current: 8 A, Rated voltage (III/2): 160 V, Number of positions: 5, Pitch: 3.81 mm, Connection method: Screw connection, Color: green, Contact surface: Tin

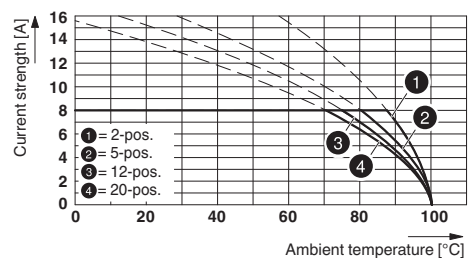


## Drawings

Drilling diagram



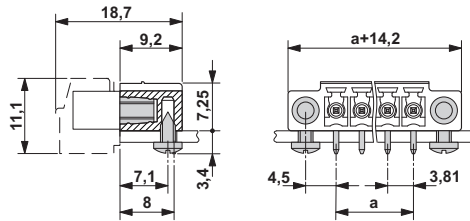
Diagram



Type: MC 1,5/...-STF-3,81 with MC 1,5/...-GF-3,81

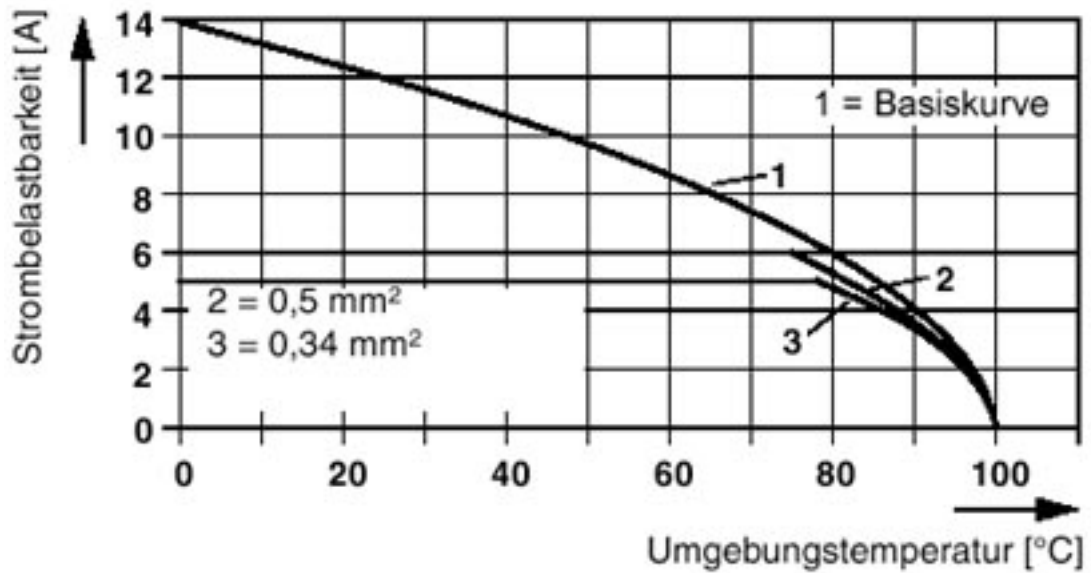
# Base strip - MC 1,5/ 5-GF-3,81 - 1827897

Dimensioned drawing



Diagram

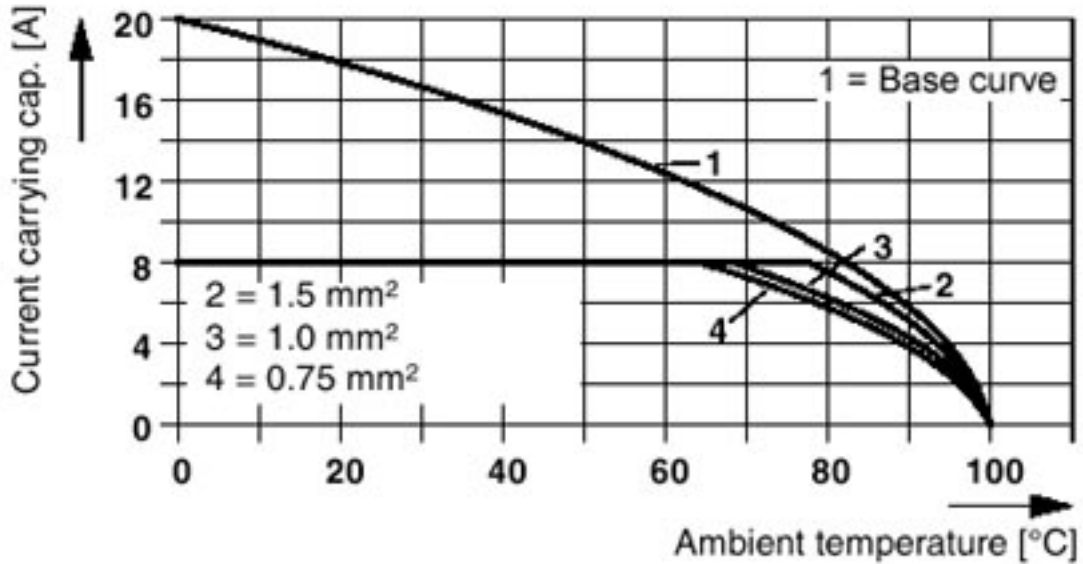
Steckerteil: QC 0,5/5-ST(F)-3,81  
Grundgehäuse: MC(V) 1,5/5-G(F)-3,81



# Base strip - MC 1,5/ 5-GF-3,81 - 1827897

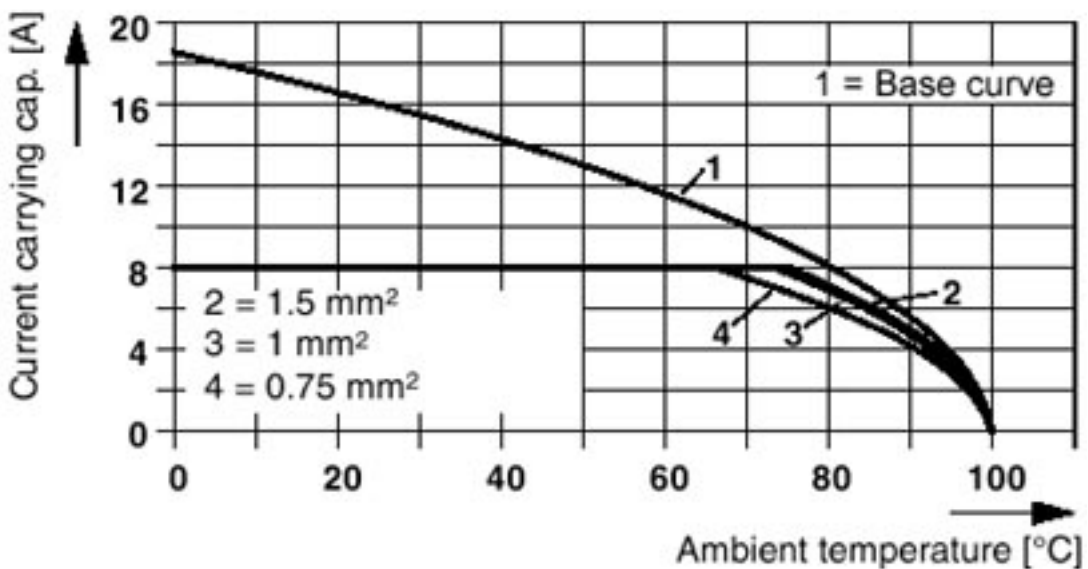
Diagram

Plug: MC 1,5/5-ST(F)-3,81(3,5)  
Header: MC(V) 1,5/5-G(F)-3,81(3,5)



Diagram

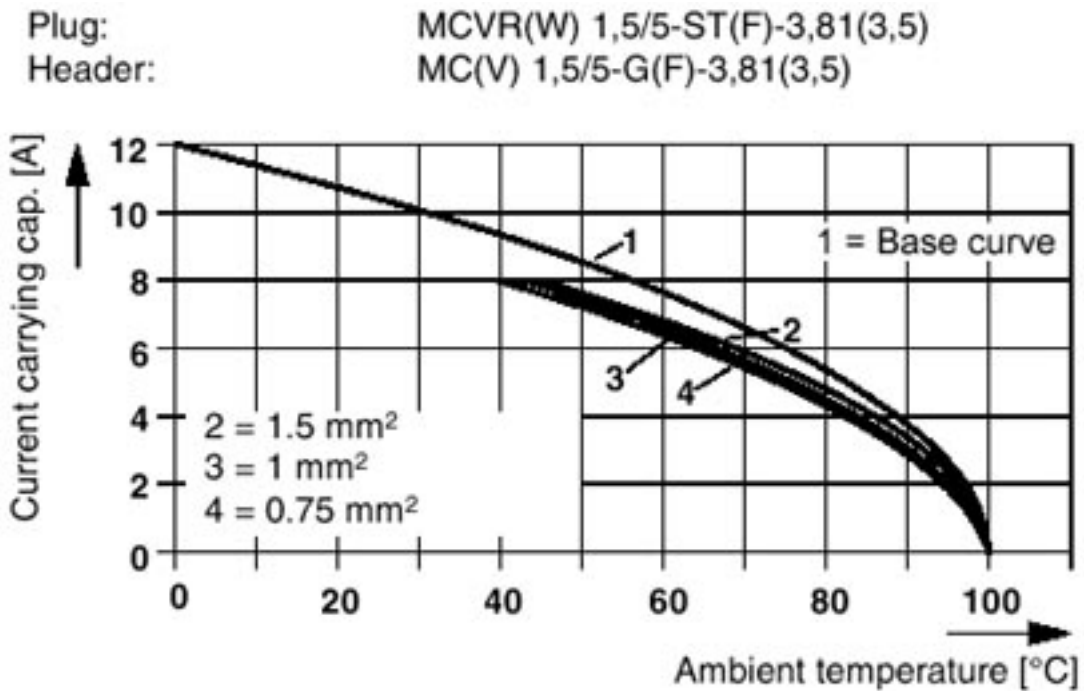
Plug: FRONT-MC 1,5/5-ST(F)-3,81(3,5)  
Header: MC(V) 1,5/5-G(F)-3,81(3,5)



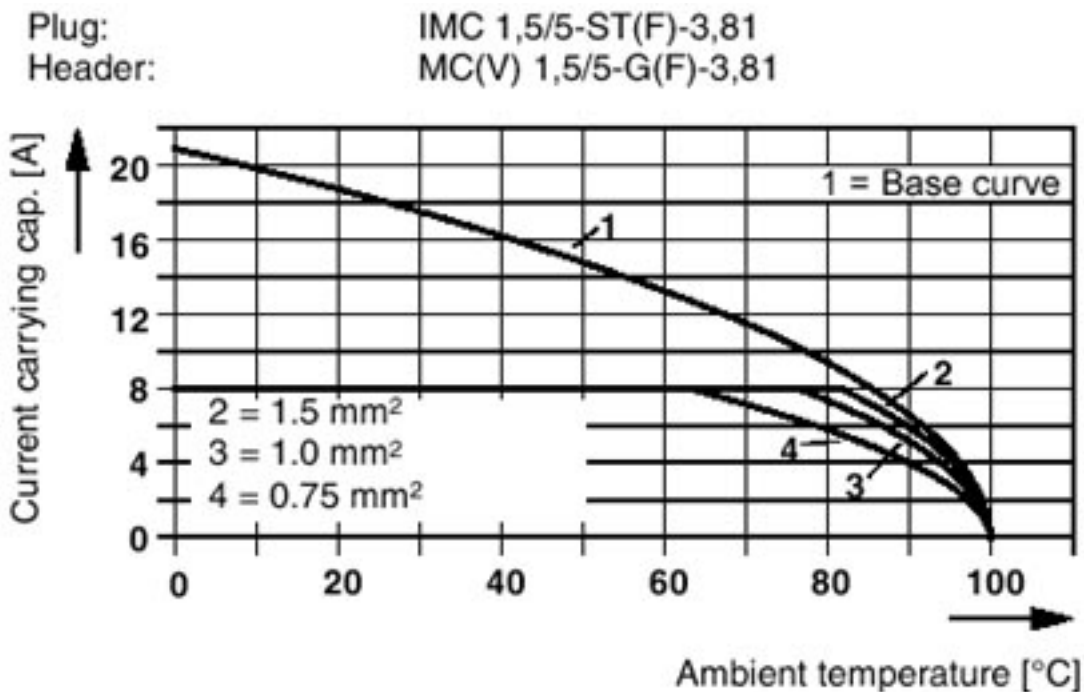


### Base strip - MC 1,5/ 5-GF-3,81 - 1827897

Diagram



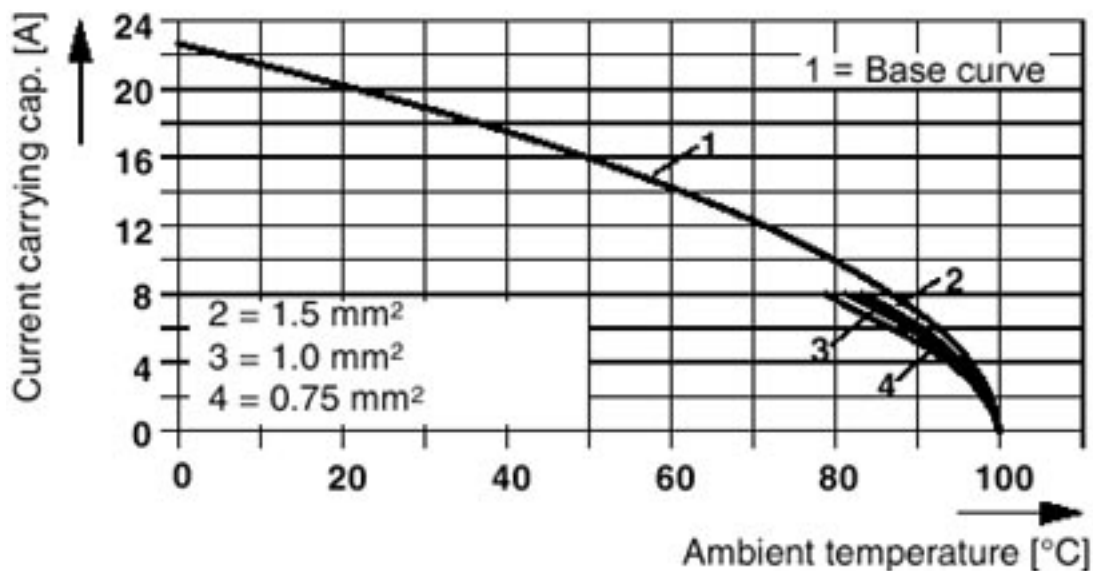
Diagram



# Base strip - MC 1,5/ 5-GF-3,81 - 1827897

Diagram

Plug: FK-MCP 1,5/5-ST(F)-3,81  
 Header: MC(V) 1,5/5-G(F)-3,81



Diagram

