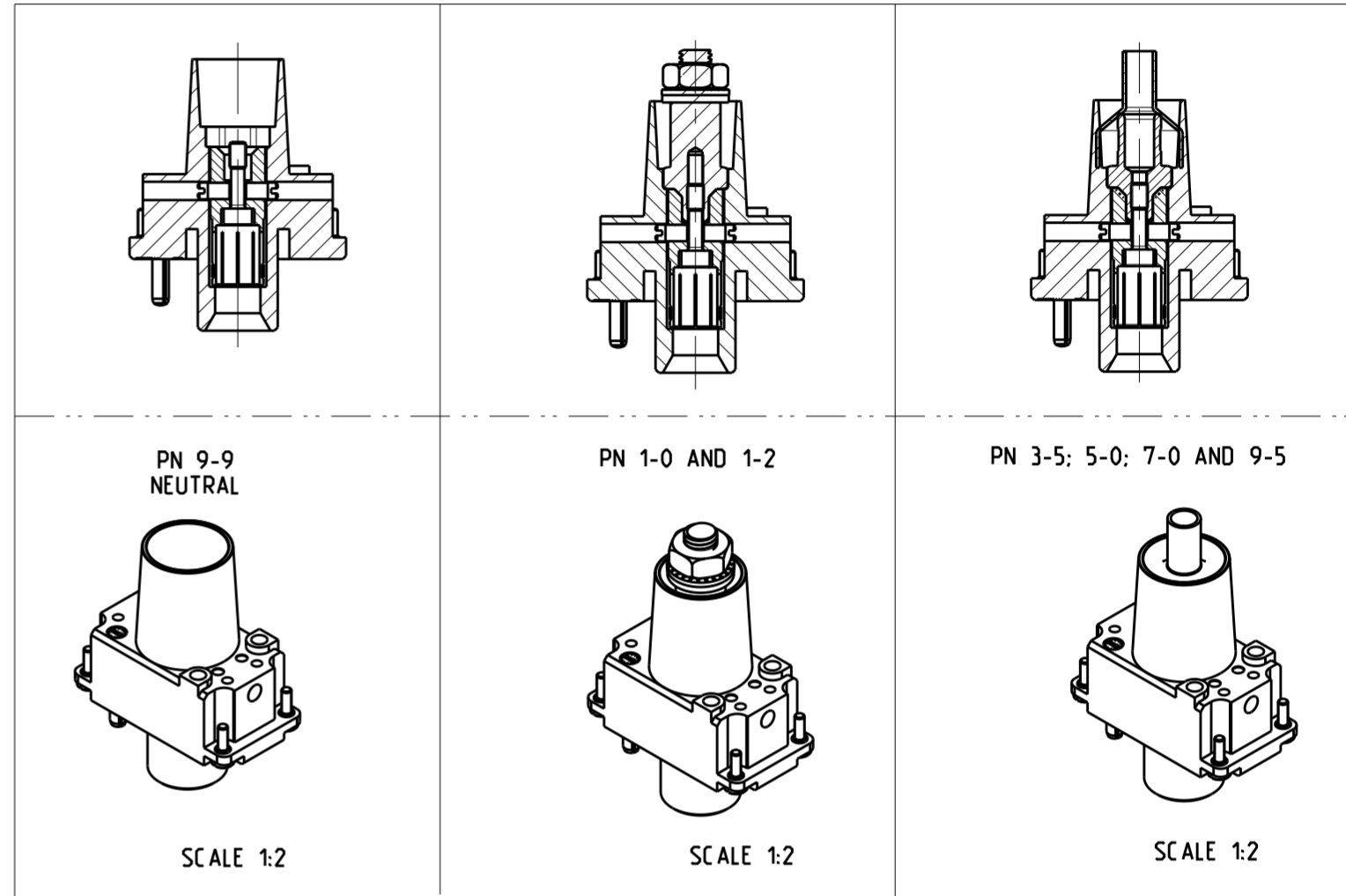
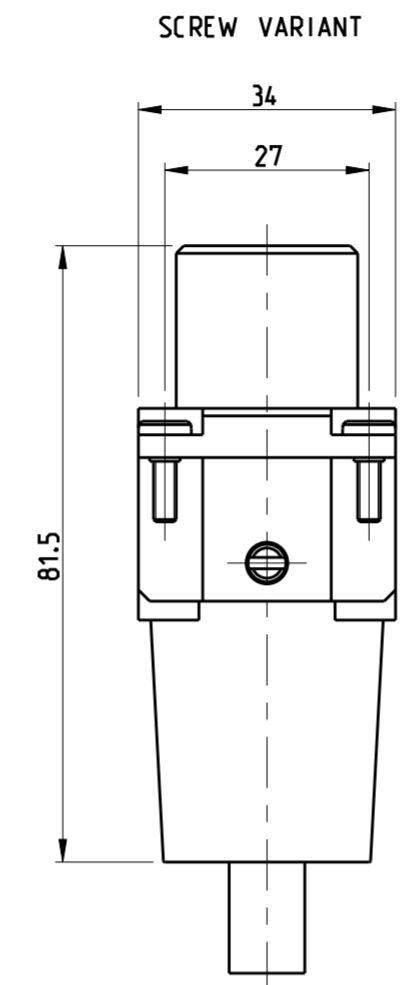
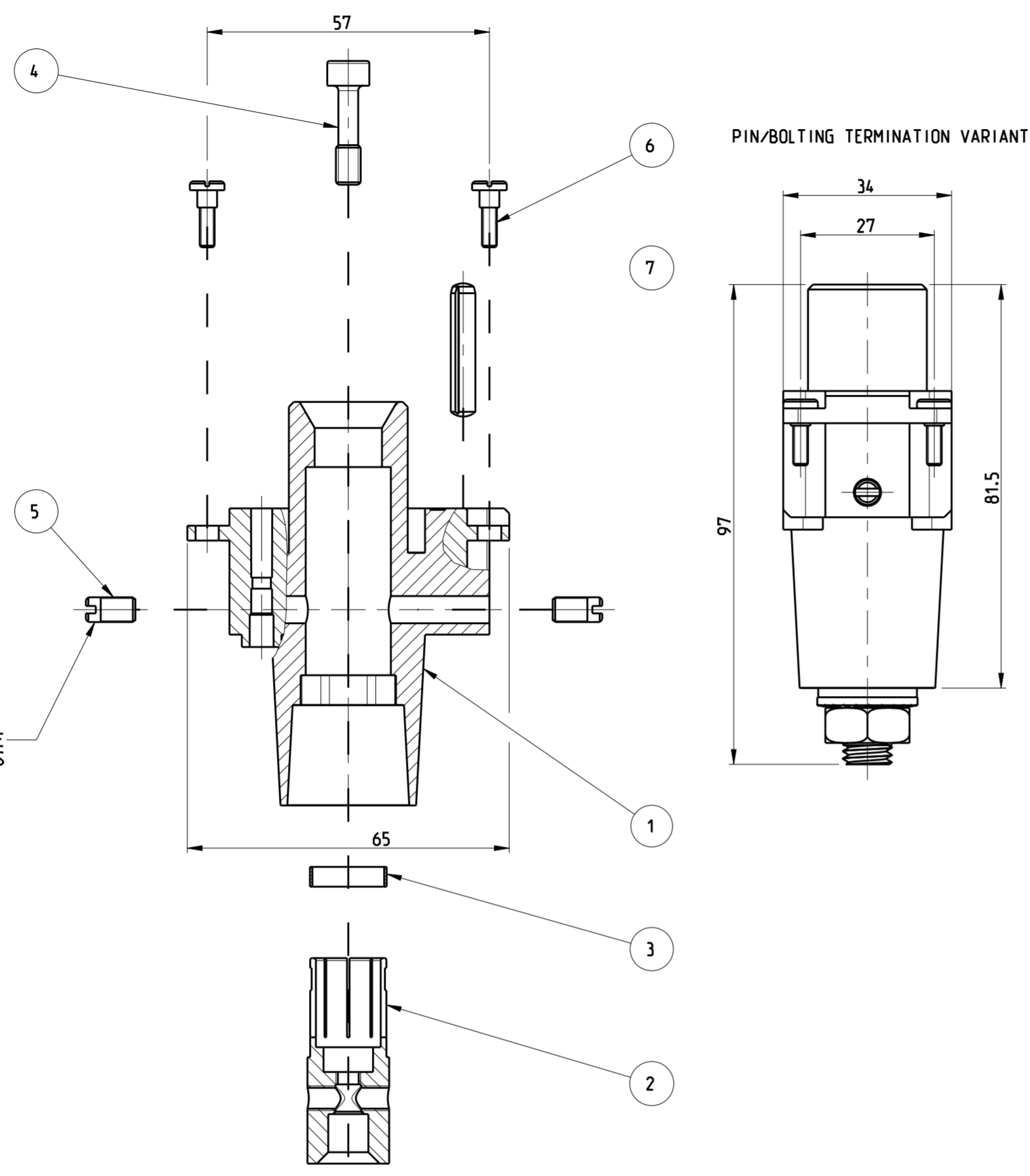


THIS DRAWING IS UNPUBLISHED. RELEASED FOR PUBLICATION 1997  
 (C) COPYRIGHT 1997 ALL RIGHTS RESERVED.

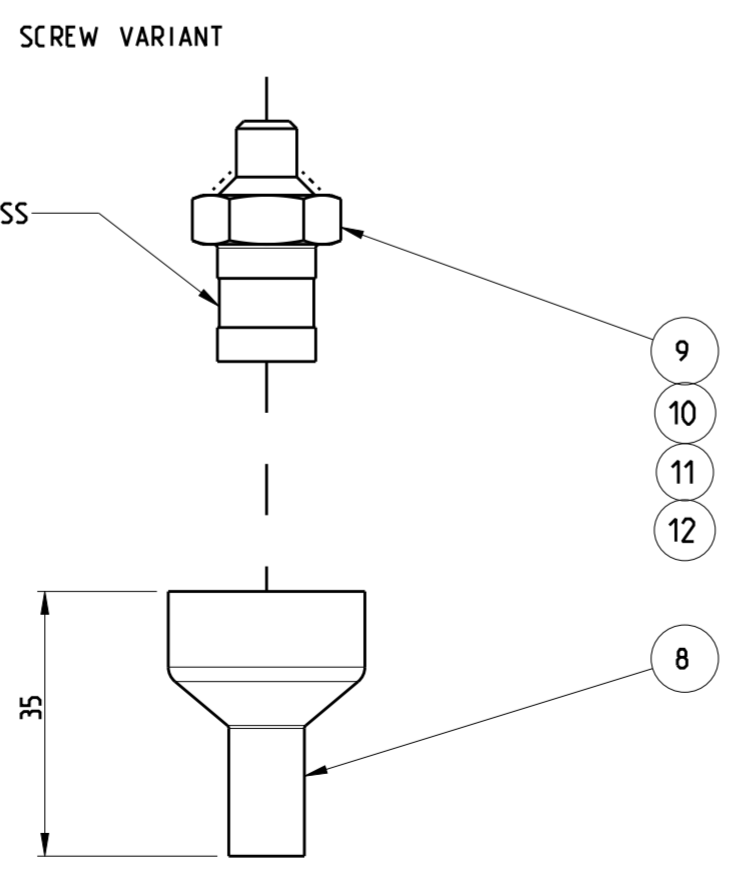
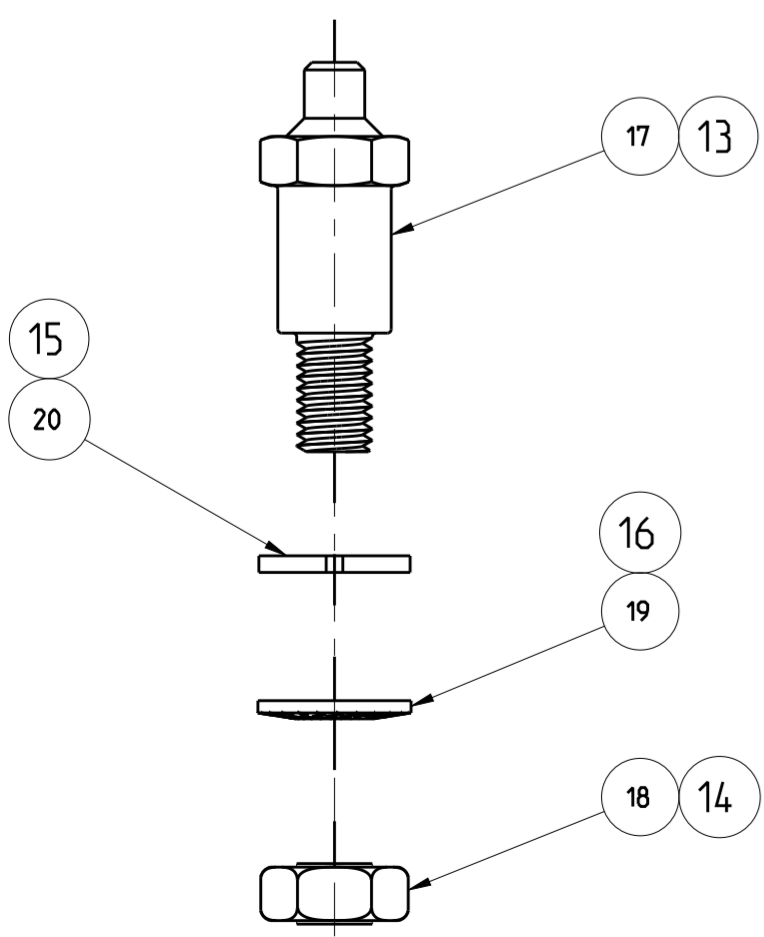
LOC	DIST	REVISIONS			
P	LTR	DESCRIPTION	DATE	DWN	APVD
A1	-	B6	ECR-16-009338	08DEC2016	GCM MKO

- NOTES:
- PIN/BOLT VARIANT: POS.4 FITTED WITH POS.17 BOLTING AND POS.14, 15 AND 16 MOUNTED ON BOLT TERMINATION
  - SCREW VARIANT: POS.4 OF FITTED WITH POS.9 BOLTING POS.6, 7 AND 8 IN POLY BAG PACKING
  - PACKAGING QUANTITY: 5 PIECES IN A CARTON BOX
  - OBsolete PARTS: OBSOLETE CIS STREAMLINING PER D.RENAUD/D.SINISI



WITH LOCTITE SECURE SCREW POS.4 MUST BE ABLE TO PASS

PIN/BOLTING TERMINATION VARIANT



QTY	DESCRIPTION	MATERIAL	ITEM NO	SURFACE	COLOR	REMARKS
1	WASHER, PLAIN	BRASS	20	SILVERED		DIN 125
1	WASHER	STEEL	19	SILVERED		SKS10
1	NUT M10	MILD STEEL	18	SILVERED		DIN EN 28673
1	BOLT TERMINATION FOR SOCKET CONTACT AG	CuZn39Pb2	17	SILVERED		
-	WASHER	STEEL	16	SILVERED		SKS12
-	WASHER, PLAIN	BRASS	15	SILVERED		DIN 125
-	NUT M12	MILD STEEL	14	SILVERED		DIN EN 28673
-	BOLT TERMINATION FOR SOCKET CONTACT AG	CuZn39Pb2	13	SILVERED		
-	BARREL 95mm2	CuTeP(2.1546)	12	SILVERED		
-	BARREL 70mm2	CuTeP(2.1546)	11	SILVERED		
-	BARREL 50mm2	CuTeP(2.1546)	10	SILVERED		
-	BARREL 35mm2	CuTeP(2.1546)	9	SILVERED		
-	SHRINKABLE TUBE	POLYOLEFIN	8		BLACK	35mm
2	Grooved pins / Rivet pins	STAINL.STEEL	7	BLANK		DIN EN 28740
4	SCREW, SLOTTED PAN HEAD	STAINL.STEEL	6	BLANK		DIN 923
2	SCREW M5	STAINLESS STEEL	5	BLANK		DIN 427
1	SCREW, HEX. SOCKET HEAD CAP	STAINL.STEEL	4	BLANK		SIMILARLY DIN EN ISO 4762
1	ROUND SPRING	STAINL.STEEL	3	BLANK		
1	SOCKET CONTACT FOR AG	Cu Sn 8	2	SILVERED		
1	FEMALE INSERT AG	PA66 (Ultramid A3x3G5)	1			

QTY	DESCRIPTION	ITEM NO	SURFACE	COLOR	REMARKS	
9-9	1-0	1-2	9-5	7-0	5-0	3-5
AM-1P-360-35.AG.Bu.C						
AM-1P-360-50.AG.Bu.C						
AM-1P-360-70.AG.Bu.C						
AM-1P-360-95.AG.Bu.C						
AM-1P-360.Bu-AG.M12						
AM-1P-360.Bu-AG.M10						
AM-1P-360.Bu-AG						

THIS DRAWING IS A CONTROLLED DOCUMENT.

DIMENSIONS: mm

TOLERANCES UNLESS OTHERWISE SPECIFIED:

0 PLC	±
1 PLC	±
2 PLC	±
3 PLC	±
4 PLC	±
ANGLES	±
FINISH	±

MATERIAL: -

DWN: Kramer 24.11.97  
 CHK: Schweiger 24.11.97  
 APVD: -

PRODUCT SPEC: 108-74021  
 APPLICATION SPEC: 114-74023  
 WEIGHT: ca. 180g

NAME: ASSEMBLY SOCKET INSERT AG AM-4P/13

SIZE: A2 CAGE CODE: 00779 DRAWING NO: C-1110028 RESTRICTED TO: -

CUSTOMER DRAWING SCALE: 1:1 SHEET: 1 OF 1 REV: B6