

# EC Series

**Highest Performance Compact  
RFI Power Line Filters  
with IEC Connectors**



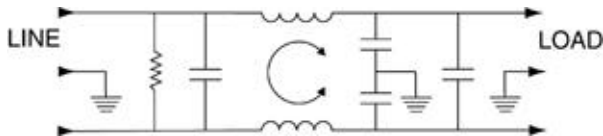
**UL Recognized  
CSA Certified  
VDE Approved**

## EC Series

EC series RFI power line filters provide the highest attenuation of any standard filter available in a package size limited by the dimensions of the integral IEC connector. These filters combine high common-mode inductance with high differential-mode capacitance and minimal parasitic elements, for effective attenuation of line-to-ground and line-to-line noise across the frequency range.

Performance and applications are similar to those of the ED series, but with higher differential-mode performance in most applications, due to an additional capacitor on the load side.

## Electrical Schematic



Resistor location for reference only.



## Specifications

Maximum leakage current, each

line-to-ground	@ 120 VAC 60 Hz:	.22 mA
	@ 250 VAC 50 Hz:	.38 mA

Hipot rating (one minute):

line-to-ground	1500 VAC
line-to-line	1450 VDC

Operating frequency:

50/60 Hz

Rated voltage:

120/250 VAC

**Minimum** insertion loss in dB:

Line-to-ground in 50 ohm circuit

Current Rating	Frequency-MHz					
	.15	.5	1	5	10	30
1A	25	35	40	50	50	50
3A	20	30	37	47	48	50
6A	15	22	25	40	45	50
10A	7	14	20	35	39	48

Line-to-line in 50 ohm circuit

Current Rating	Frequency-MHz						
	.15	.5	1	5	10	20	30
1A	5	35	50	60	60	40	40
3A	5	25	45	60	55	34	34
6A	10	10	40	65	60	40	40
10A	10	10	27	65	56	38	38

### EC1, EC2, EC8

1A	5	35	50	60	60	40	40
3A	5	25	45	60	55	34	34
6A	10	10	40	65	60	40	40
10A	10	10	27	65	56	38	38

### EC4

1A	5	35	50	60	60	33	33
3A	5	30	45	60	55	34	34
6A	10	10	40	65	60	33	33

## Line Cord

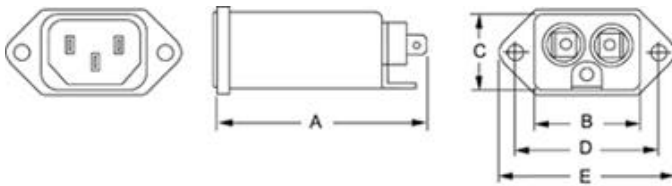
Line Cord No. GA400:

7<sup>1</sup>/<sub>2</sub> foot, 3-conductor line cord to mate with EC series.

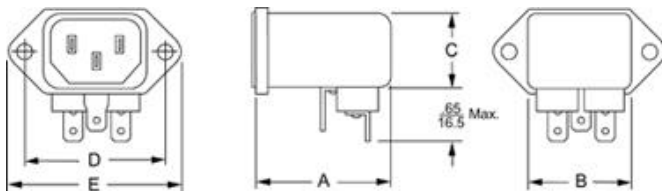
## Case Styles

Metric shown in italics.

### EC1



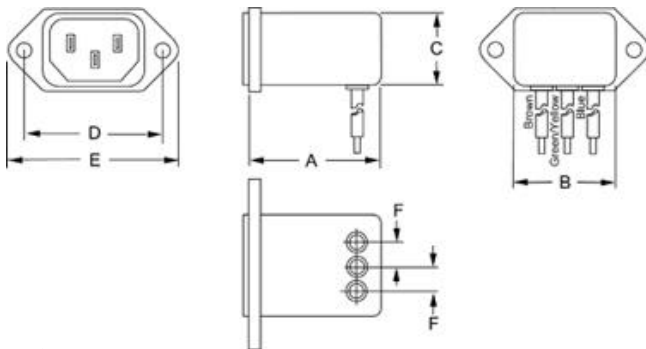
### EC2



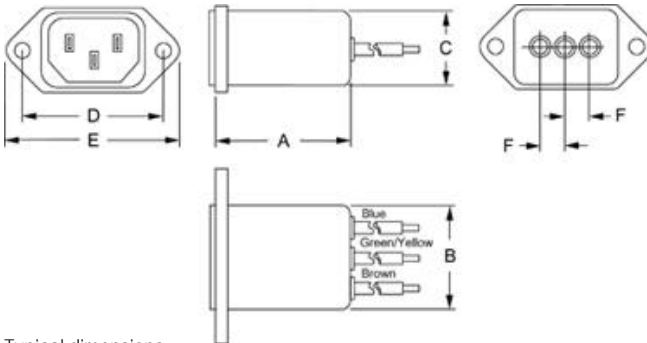
Typical dimensions

Terminals:  $\frac{.250}{6.35}$  (3) Holes:  $\frac{.07}{1.8}$  Dia.(2) Slot:  $\frac{.07 \times .16}{1.8 \times 4.1}$

### EC4



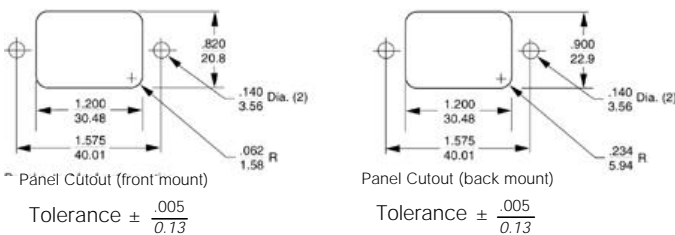
### EC8



Typical dimensions

Wire leads:  $\frac{4.0}{101.6}$  Min. 18 AWG Mounting holes:  $\frac{.132}{3.35}$  Dia.(2)

## Recommended Panel Cutouts



Note 1: EC1 and EC8 allow front or back mounting.  
Note 2: EC2 and EC4 allow back mounting only.

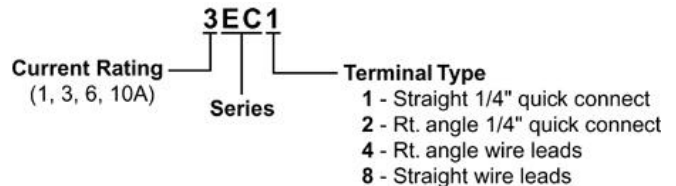
## Case Dimensions

Metric shown in italics.

Part No.	A (max)	B (max)	C (max)	D $\pm .015$ $\pm .38$	E (max)	F (ref)
1EC1	$\frac{2.62}{66.5}$	$\frac{1.19}{30.2}$	$\frac{0.81}{20.6}$	$\frac{1.575}{40.01}$	$\frac{1.98}{50.3}$	—
1EC2	$\frac{1.97}{50.0}$	$\frac{1.19}{30.2}$	$\frac{0.85}{21.6}$	$\frac{1.575}{40.01}$	$\frac{1.98}{50.3}$	—
1EC4	$\frac{1.97}{50.0}$	$\frac{1.19}{30.2}$	$\frac{0.85}{21.6}$	$\frac{1.575}{40.01}$	$\frac{1.98}{50.3}$	$\frac{.295}{7.5}$
1EC8	$\frac{1.98}{50.3}$	$\frac{1.19}{30.2}$	$\frac{0.81}{20.6}$	$\frac{1.575}{40.01}$	$\frac{1.98}{50.3}$	$\frac{.295}{7.5}$
3EC1	$\frac{2.62}{66.5}$	$\frac{1.19}{30.2}$	$\frac{0.81}{20.6}$	$\frac{1.575}{40.01}$	$\frac{1.98}{50.3}$	—
3EC2	$\frac{1.97}{50.0}$	$\frac{1.19}{30.2}$	$\frac{0.85}{21.6}$	$\frac{1.575}{40.01}$	$\frac{1.98}{50.3}$	—
3EC4	$\frac{1.97}{50.0}$	$\frac{1.19}{30.2}$	$\frac{0.85}{21.6}$	$\frac{1.575}{40.01}$	$\frac{1.98}{50.3}$	$\frac{.295}{7.5}$
3EC8	$\frac{1.98}{50.3}$	$\frac{1.19}{30.2}$	$\frac{0.81}{20.6}$	$\frac{1.575}{40.01}$	$\frac{1.98}{50.3}$	$\frac{.295}{7.5}$
6EC1	$\frac{2.62}{66.5}$	$\frac{1.19}{30.2}$	$\frac{0.81}{20.6}$	$\frac{1.575}{40.01}$	$\frac{1.98}{50.3}$	—
6EC2	$\frac{1.97}{50.0}$	$\frac{1.19}{30.2}$	$\frac{0.85}{21.6}$	$\frac{1.575}{40.01}$	$\frac{1.98}{50.3}$	—
6EC4	$\frac{1.97}{50.0}$	$\frac{1.19}{30.2}$	$\frac{0.85}{21.6}$	$\frac{1.575}{40.01}$	$\frac{1.98}{50.3}$	$\frac{.295}{7.5}$
6EC8	$\frac{1.98}{50.3}$	$\frac{1.19}{30.2}$	$\frac{0.81}{20.6}$	$\frac{1.575}{40.01}$	$\frac{1.98}{50.3}$	$\frac{.295}{7.5}$
10EC1	$\frac{2.62}{66.5}$	$\frac{1.19}{30.2}$	$\frac{0.81}{20.6}$	$\frac{1.575}{40.01}$	$\frac{1.98}{50.3}$	—

## Ordering Information

Consult your local Corcom sales representative for pricing.



## Available Part Numbers

1EC1	6EC1
1EC2	6EC2
1EC4	6EC4
1EC8	6EC8
3EC1	10EC1
3EC2	
3EC4	
3EC8	

Line Cord No. GA400

Insulating Boot No. FA601