

**BL/SL 5.00 series**  
**BL 5.00/16/180 SN BK BX**
**onlinecomponents.com**  
THE ONLINE DISTRIBUTOR OF ELECTRONIC COMPONENTS
**Weidmüller Interface GmbH & Co. KG**

Klingenbergstraße 16

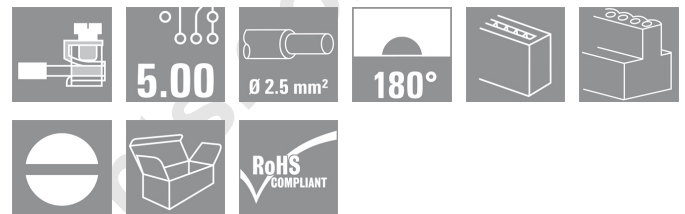
D-32758 Detmold

Germany

Fon: +49 5231 14-0

Fax: +49 5231 14-2083

www.weidmueller.com



Female plugs with leaf-spring wire connection system. The female plugs provide space for labelling.

- 0.2 - 1.5 mm<sup>2</sup> (IEC) / 26 - 14 AWG (UL)
- 400 V (IEC) / 300 V (UL)
- 11 A (IEC) / 10 A (UL)

**General ordering data**

Order No.	<a href="#">1730840000</a>
Type	BL 5.00/16/180 SN BK BX
Version	PCB plug-in connector, female plug, 5.00 mm, No. of poles: 16, 180°, Leaf spring connection, Clamping range, rated connection, max.: 2.08 mm <sup>2</sup> , Box
Product data	IEC: 400 V / 14 A / 0.5 - 1.5 mm <sup>2</sup> UL: 300 V / 10 A / AWG 26 - AWG 14
GTIN (EAN)	4008190387198
Packaging	Box
Qty.	50 pc(s).

Creation date May 21, 2012 9:22:24 AM CEST

**BL/SL 5.00 series**  
**BL 5.00/16/180 SN BK BX**onlinecomponents.com  
THE ONLINE DISTRIBUTOR OF ELECTRONIC COMPONENTSWeidmüller Interface GmbH & Co. KG  
Klingenbergstraße 16  
D-32758 Detmold  
Germany  
Fon: +49 5231 14-0  
Fax: +49 5231 14-2083  
www.weidmueller.com**Technical data****System parameters**

Product family	BL/SL 5.00 series	Conductor connection system	Leaf spring connection
Outgoing direction of conductor	180°	Pitch in mm (P)	5 mm
Pitch in inches (P)	0.197 inch	No. of poles	16
Number of rows	1	Tightening torque, min.	0.4 Nm
Tightening torque, max.	0.5 Nm	Clamping screw	M 2.5
Stripping length	6 mm	L1 in mm	75 mm
L1 in inches	2.953 inch	Touch-safe protection acc. to DIN VDE 0470 IP 00	

**Material data**

Insulating material	PA	Colour	Black
Colour chart	Similar to RAL 9011	Flammability class UL 94	V-2
CTI	≥ 600	Contact material	CuSn
Contact surface	tinned	Continuous operating temp., min.	-25 °C
Continuous operating temp., max.	100 °C		


**Connectable conductors**

Clamping range, rated connection, min.	0.13 mm <sup>2</sup>	Clamping range, rated connection, max.	2.08 mm <sup>2</sup>
Wire connection cross section AWG, min.	AWG 26	Wire connection cross section AWG, max.	AWG 14
Solid, min. H05(07) V-U	0.5 mm <sup>2</sup>	Solid, max. H05(07) V-U	1.5 mm <sup>2</sup>
Flexible, min. H05(07) V-K	0.5 mm <sup>2</sup>	Flexible, max. H05(07) V-K	1.5 mm <sup>2</sup>
w. wire end ferrule, DIN 46228 pt 1, min	0.5 mm <sup>2</sup>	w. plastic collar ferrule, DIN 46228 pt 4, min.	0.5 mm <sup>2</sup>
w. plastic collar ferrule, DIN 46228 pt 4, max.	1 mm <sup>2</sup>	Plug gauge acc. to EN 60999 a x b; Ø	2.4 mm x 1.5 mm

**DIN IEC rating data**

Rated current, min. no. of poles (Tu=20°C)	14 A	Rated current, max. no. of poles (Tu=20°C)	12 A
Rated current, number of poles (Tu=40°C), min	12 A	Rated current, number of poles (Tu=40°C), max.	10 A
Rated voltage for surge voltage class / pollution degree II/2	400 V	Rated voltage for surge voltage class / pollution degree III/2	320 V
Rated voltage for surge voltage class / pollution degree III/3	250 V	Rated impulse voltage for surge voltage class/ pollution degree II/2	4 kV
Rated impulse voltage for surge voltage class/ pollution degree III/2	4 kV	Rated impulse voltage for surge voltage class/ contamination degree III/3	4 kV

**CSA rating data**


Institute (CSA)		Rated voltage (Use group B)	300 V
Rated current (use group B)	10 A	Rated voltage (use group D)	300 V
Rated current (use group D)	10 A	Wire cross-section, AWG, min.	AWG 26
Wire cross-section, AWG, max.	AWG 14		

**BL/SL 5.00 series  
BL 5.00/16/180 SN BK BX**

**Weidmüller Interface GmbH & Co. KG**  
Klingenbergstraße 16  
D-32758 Detmold  
Germany  
Fon: +49 5231 14-0  
Fax: +49 5231 14-2083  
www.weidmueller.com

**Technical data**

**UL 1059 rating data**

Institute (UR)		Rated voltage (use group B)	300 V
Rated current (use group B)	10 A	Rated voltage (use group D)	300 V
Rated current (use group D)	10 A	Wire cross-section, AWG, min.	AWG 26
Wire cross-section, AWG, max.	AWG 14		

**Classifications**

ETIM 3.0	EC001284	UNSPSC	30-21-18-10
eClass 4.1	27-26-07-01	eClass 5.1	27-26-07-04
eClass 6.0	27-26-07-04	eClass 7.0	27-44-04-02

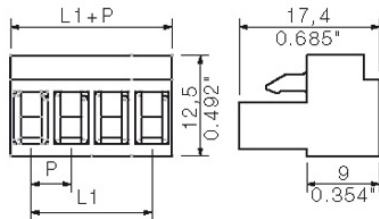
**Notes**

- Notes
- Additional colours on request
  - Gold-plated contact surfaces on request
  - Rated current related to rated cross-section and min. No. of poles.
  - Wire end ferrule without plastic collar to DIN 46228/1
  - Wire end ferrule with plastic collar to DIN 46228/4
  - P on drg. = pitch
  - Do not tighten screws when plugged in.
  - Rated data refer only to the component itself. Clearance and creepage distances to other components are to be designed in accordance with the relevant application standards.

**Approvals**

Approvals



**BL/SL 5.00 series**  
**BL 5.00/16/180 SN BK BX****Weidmüller Interface GmbH & Co. KG**  
Klingenbergstraße 16  
D-32758 Detmold  
Germany  
Fon: +49 5231 14-0  
Fax: +49 5231 14-2083  
www.weidmueller.com**Drawings**

**BL/SL 5.00 series**  
**BL 5.00/16/180 SN BK BX**
**onlinecomponents.com**  
THE ONLINE DISTRIBUTOR OF ELECTRONIC COMPONENTS
**Weidmüller Interface GmbH & Co. KG**  
 Klingenbergstraße 16  
 D-32758 Detmold  
 Germany  
 Fon: +49 5231 14-0  
 Fax: +49 5231 14-2083  
 www.weidmueller.com

**Mating connector (conditionally pluggable)**
**SL 5.08/180B**


Male connectors with straight outlet direction. The solder pin length is optimised for wave flow soldering. The pin headers provide space for labelling and can be coded.

- 400 V (IEC) / 300 V (UL)
- 18 A (IEC) / 15 A (UL)

**General ordering data**

Order No.	Type	Version	Product data	GTIN (EAN)	Packaging	Qty.
<a href="#">1520960000</a>	SL 5.08/16/180B 3.2 SN OR BX	PCB plug-in connector, male header, Dovetails for fixing blocks, Solder connection, 5.08 mm, No. of poles: 16, Solder pin length (l): 3.2 mm, tinned, Orange, Box	IEC: 400 V / 18 A UL: 300 V / 15 A	4008190145149	Box	50 pc(s).

**SL-SMT 5.00/180LF Box**


High-temperature-resistant male header, packed in box or tape. In tape with 1.5 mm solder pin optimised for automatic assembly. 3.2 mm solder pin suitable for reflow and wave soldering. These male connectors provide space for labelling and can be coded.

- 400 V (IEC) / 300 V (UL)
- 19 A (IEC) / 15 A (UL)

**General ordering data**

Order No.	Type	Version	Product data	GTIN (EAN)	Packaging	Qty.
<a href="#">1841530000</a>	SL-SMT 5.00/16/180LF 3.2SN BK BX	PCB plug-in connector, male header, Solder flange, Reflow solder connection, 5.00 mm, No. of poles: 16, 180°, Solder pin length (l): 3.2 mm, tinned, Black, Box	IEC: 400 V / 19 A UL: 300 V / 15 A	4032248352432	Box	50 pc(s).
<a href="#">1796920000</a>	SL-SMT 5.00/16/180LF 1.5SN BK BX	PCB plug-in connector, male header, Solder flange, Reflow solder connection, 5.00 mm, No. of poles: 16, 180°, Solder pin length (l): 1.5 mm, tinned, Black, Box	IEC: 400 V / 19 A UL: 300 V / 15 A	4032248237548	Box	50 pc(s).

**BL/SL 5.00 series**  
**BL 5.00/16/180 SN BK BX**

**Mating connector (conditionally pluggable)**

**SL 5.00/180B**



Male connectors with straight outlet direction. The solder pin length is optimised for wave flow soldering. The pin headers provide space for labelling and can be coded.

- 400 V (IEC) / 300 V (UL)
- 18 A (IEC) / 15 A (UL)

**General ordering data**

Order No.	Type	Version	Product data	GTIN (EAN)	Packaging	Qty.
<a href="#">1581920000</a>	SL 5.00/16/180B 3.2SN OR BX	PCB plug-in connector, male header, Dovetails for fixing blocks, Solder connection, 5.00 mm, No. of poles: 16, 180°, Solder pin length (l): 3.2 mm, tinned, Orange, Box	IEC: 400 V / 18 A UL: 300 V / 15 A	4008190068639	Box	50 pc(s).

**SL-SMT 5.00/90LF Box**



High-temperature-resistant male header, packed in box or tape. In tape with 1.5 mm solder pin optimised for automatic assembly. 3.2 mm solder pin suitable for reflow and wave soldering. These male connectors provide space for labelling and can be coded.

- 400 V (IEC) / 300 V (UL)
- 19 A (IEC) / 15 A (UL)

**General ordering data**

Order No.	Type	Version	Product data	GTIN (EAN)	Packaging	Qty.
<a href="#">1797370000</a>	SL-SMT 5.00/16/90LF 1.5SN BK BX	PCB plug-in connector, male header, Solder flange, Reflow solder connection, 5.00 mm, No. of poles: 16, 90°, Solder pin length (l): 1.5 mm, tinned, Black, Box	IEC: 400 V / 19 A UL: 300 V / 15 A	4032248238156	Box	50 pc(s).
<a href="#">1840490000</a>	SL-SMT 5.00/16/90LF 3.2SN BK BX	PCB plug-in connector, male header, Solder flange, Reflow solder connection, 5.00 mm, No. of poles: 16, 90°, Solder pin length (l): 3.2 mm, tinned, Black, Box	IEC: 400 V / 19 A UL: 300 V / 15 A	4032248351336	Box	50 pc(s).

**BL/SL 5.00 series**  
**BL 5.00/16/180 SN BK BX**
**onlinecomponents.com**  
THE ONLINE DISTRIBUTOR OF ELECTRONIC COMPONENTS
**Weidmüller Interface GmbH & Co. KG**  
 Klingenbergstraße 16  
 D-32758 Detmold  
 Germany  
 Fon: +49 5231 14-0  
 Fax: +49 5231 14-2083  
 www.weidmueller.com

**Mating connector (conditionally pluggable)**
**SL-SMT 5.08/90LF Box**


High-temperature-resistant male header, packed in box or tape. In tape with 1.5 mm solder pin optimised for automatic assembly. 3.2 mm solder pin suitable for reflow and wave soldering. These male connectors provide space for labelling and can be coded.

- 400 V (IEC) / 300 V (UL)
- 19 A (IEC) / 15 A (UL)

**General ordering data**

Order No.	Type	Version	Product data	GTIN (EAN)	Packaging	Qty.
<a href="#">1780570000</a>	SL-SMT 5.08/16/90LF 3.2SN BK BX	PCB plug-in connector, male header, Solder flange, Reflow solder connection, 5.08 mm, No. of poles: 16, 90°, Solder pin length (l): 3.2 mm, tinned, Black, Box	IEC: 400 V / 19 A UL: 300 V / 15 A	4032248165872	Box	50 pc(s).
<a href="#">1775372001</a>	SL-SMT 5.08/16/90LF 1.5SN BK BX	PCB plug-in connector, male header, Solder flange, Reflow solder connection, 5.08 mm, No. of poles: 16, 90°, Solder pin length (l): 1.5 mm, tinned, Black, Box	IEC: 400 V / 19 A UL: 300 V / 15 A	4032248157358	Box	50 pc(s).

**SL 5.08/90B**


Male connectors with 90° outlet direction. The solder pin length is optimised for wave flow soldering. The pin headers provide space for labelling and can be coded.

- 400 V (IEC) / 300 V (UL)
- 18 A (IEC) / 15 A (UL)

**General ordering data**

Order No.	Type	Version	Product data	GTIN (EAN)	Packaging	Qty.
<a href="#">1511760000</a>	SL 5.08/16/90B 3.2SN OR BX	PCB plug-in connector, male header, Dovetails for fixing blocks, Solder connection, 5.08 mm, No. of poles: 16, Solder pin length (l): 3.2 mm, tinned, Orange, Box	IEC: 400 V / 18 A UL: 300 V / 15 A	4008190020552	Box	50 pc(s).

**BL/SL 5.00 series**  
**BL 5.00/16/180 SN BK BX**
**onlinecomponents.com**  
THE ONLINE DISTRIBUTOR OF ELECTRONIC COMPONENTS
**Weidmüller Interface GmbH & Co. KG**

 Klingenbergstraße 16  
 D-32758 Detmold  
 Germany

Fon: +49 5231 14-0

Fax: +49 5231 14-2083

www.weidmueller.com

**Mating connector (conditionally pluggable)**
**SLDV-THR 5.00/180FLF**


High-temperature resistant, double level, laterally offset, closed ended male header, with solder flange option. 1.5 mm solder pin suitable for reflow soldering. 3.2 mm solder pin suitable for reflow and wave soldering. The pin headers provide space for labelling and can be coded.

- 400 V (IEC) / 300 V (UL)
- 15 A (IEC) / 10 A (UL)

**General ordering data**

Order No.	Type	Version	Product data	GTIN (EAN)	Packaging	Qty.
<a href="#">1883270000</a>	SLDV-THR 5.00/32/180FLF 3.2SN BK BX	PCB plug-in connector, male header, Flange / Solder flange, Reflow solder connection, 5.00 mm, No. of poles: 32, 180°, Solder pin length (l): 3.2 mm, tinned, Black, Box	IEC: 400 V / 15 A UL: 300 V / 10 A	4032248487622	Box	10 pc(s).
<a href="#">1895600000</a>	SLDV-THR 5.00/32/180FLF 1.5SN BK BX	PCB plug-in connector, male header, Flange / Solder flange, Reflow solder connection, 5.00 mm, No. of poles: 32, 180°, Solder pin length (l): 1.5 mm, tinned, Black, Box	IEC: 400 V / 15 A UL: 300 V / 10 A	4032248510344	Box	10 pc(s).

**SLDV-THR 5.00/180F**


High-temperature resistant, double level, laterally offset, male connector with flange or solder flange. 1.5 mm solder pin is suitable for reflow soldering. 3.2 mm solder pin suitable for reflow and wave soldering. The pin headers provide space for labelling and can be coded.

- 400 V (IEC) / 300 V (UL)
- 15 A (IEC) / 10 A (UL)

**General ordering data**

Order No.	Type	Version	Product data	GTIN (EAN)	Packaging	Qty.
<a href="#">1895370000</a>	SLDV-THR 5.00/32/180F 1.5SN BK BX	PCB plug-in connector, male header, Flange, Reflow solder connection, 5.00 mm, No. of poles: 32, 180°, Solder pin length (l): 1.5 mm, tinned, Black, Box	IEC: 400 V / 15 A UL: 300 V / 10 A	4032248510115	Box	10 pc(s).
<a href="#">1881400000</a>	SLDV-THR 5.00/32/180F 3.2SN BK BX	PCB plug-in connector, male header, Flange, Reflow solder connection, 5.00 mm, No. of poles: 32, 180°, Solder pin	IEC: 400 V / 15 A UL: 300 V / 10 A	4032248482740	Box	10 pc(s).

**BL/SL 5.00 series**  
**BL 5.00/16/180 SN BK BX**
**onlinecomponents.com**  
THE ONLINE DISTRIBUTOR OF ELECTRONIC COMPONENTS
**Weidmüller Interface GmbH & Co. KG**  
 Klingenbergstraße 16  
 D-32758 Detmold  
 Germany  
 Fon: +49 5231 14-0  
 Fax: +49 5231 14-2083  
 www.weidmueller.com

**Mating connector (conditionally pluggable)**

 length (l): 3.2 mm, tinned,  
 Black, Box

**SL 5.00/135B**


Male connectors with 135° outlet direction. The solder pin length is optimised for wave flow soldering. The pin headers provide space for labelling and can be coded.

- 400 V (IEC) / 300 V (UL)
- 17 A (IEC) / 15 A (UL)

**General ordering data**

Order No.	Type	Version	Product data	GTIN (EAN)	Packaging	Qty.
<a href="#">1630620000</a>	SL 5.00/16/135B 3.2SN OR BX	PCB plug-in connector, male header, Dovetails for fixing blocks, Solder connection, 5.00 mm, No. of poles: 16, 135°, Solder pin length (l): 3.2 mm, tinned, Orange, Box	IEC: 400 V / 17 A UL: 300 V / 15 A	4008190204044	Box	50 pc(s).

**SL 5.00/90B**


Male connectors with 90° outlet direction. The solder pin length is optimised for wave flow soldering. The pin headers provide space for labelling and can be coded.

- 400 V (IEC) / 300 V (UL)
- 18 A (IEC) / 15 A (UL)

**General ordering data**

Order No.	Type	Version	Product data	GTIN (EAN)	Packaging	Qty.
<a href="#">1581000000</a>	SL 5.00/16/90B 3.2SN OR BX	PCB plug-in connector, male header, Dovetails for fixing blocks, Solder connection, 5.00 mm, No. of poles: 16, 90°, Solder pin length (l): 3.2 mm, tinned, Orange, Box	IEC: 400 V / 18 A UL: 300 V / 15 A	4008190145262	Box	50 pc(s).

**BL/SL 5.00 series**  
**BL 5.00/16/180 SN BK BX**
**onlinecomponents.com**  
THE ONLINE DISTRIBUTOR OF ELECTRONIC COMPONENTS
**Weidmüller Interface GmbH & Co. KG**  
 Klingenbergstraße 16  
 D-32758 Detmold  
 Germany  
 Fon: +49 5231 14-0  
 Fax: +49 5231 14-2083  
 www.weidmueller.com

**Mating connector (fully pluggable)**
**SL-SMT 5.00/180G Box**


High-temperature-resistant male header, packed in box or tape. In tape with 1.5 mm solder pin optimised for automatic assembly. 3.2 mm solder pin suitable for reflow and wave soldering. These male connectors provide space for labelling and can be coded.

- 400 V (IEC) / 300 V (UL)
- 19 A (IEC) / 15 A (UL)

**General ordering data**

Order No.	Type	Version	Product data	GTIN (EAN)	Packaging	Qty.
<a href="#">1796770000</a>	SL-SMT 5.00/16/180G 1.5SN BK BX	PCB plug-in connector, male header, closed side, Reflow solder connection, 5.00 mm, No. of poles: 16, 180°, Solder pin length (l): 1.5 mm, tinned, Black, Box	IEC: 400 V / 19 A UL: 300 V / 15 A	4032248237395	Box	50 pc(s).
<a href="#">1841300000</a>	SL-SMT 5.00/16/180G 3.2SN BK BX	PCB plug-in connector, male header, closed side, Reflow solder connection, 5.00 mm, No. of poles: 16, 180°, Solder pin length (l): 3.2 mm, tinned, Black, Box	IEC: 400 V / 19 A UL: 300 V / 15 A	4032248352203	Box	50 pc(s).

**SLD 5.00/180G**


2-tier male header with parallel pin arrangement. The solder pin length is optimised for wave flow soldering. The pin headers provide space for labelling and can be coded.

- 400 V (IEC) / 300 V (UL)
- 11 A (IEC) / 10 A (UL)

**General ordering data**

Order No.	Type	Version	Product data	GTIN (EAN)	Packaging	Qty.
<a href="#">1614950000</a>	SLD 5.00/32/180G 3.2SN OR BX	PCB plug-in connector, male header, closed side, Solder connection, 5.00 mm, No. of poles: 32, 180°, Solder pin length (l): 3.2 mm, tinned, Orange, Box	IEC: 400 V / 11 A UL: 300 V / 10 A	4008190040567	Box	10 pc(s).

**BL/SL 5.00 series**  
**BL 5.00/16/180 SN BK BX**
**onlinecomponents.com**  
THE ONLINE DISTRIBUTOR OF ELECTRONIC COMPONENTS
**Weidmüller Interface GmbH & Co. KG**  
 Klingenbergstraße 16  
 D-32758 Detmold  
 Germany  
 Fon: +49 5231 14-0  
 Fax: +49 5231 14-2083  
 www.weidmueller.com

**Mating connector (fully pluggable)**
**SLDV-THR 5.00/180GLF**


High-temperature resistant, double level, laterally offset, closed ended male header, with solder flange option. 1.5 mm solder pin suitable for reflow soldering. 3.2 mm solder pin suitable for reflow and wave soldering. The pin headers provide space for labelling and can be coded.

- 400 V (IEC) / 300 V (UL)
- 15 A (IEC) / 10 A (UL)

**General ordering data**

Order No.	Type	Version	Product data	GTIN (EAN)	Packaging	Qty.
<a href="#">1911650000</a>	SLDV-THR 5.00/32/180GLF 3.2SN BK BX	PCB plug-in connector, male header, closed side / solder flange, Reflow solder connection, 5.00 mm, No. of poles: 32, 180°, Solder pin length (l): 3.2 mm, tinned, Black, Box	IEC: 400 V / 15 A UL: 300 V / 10 A	4032248539635	Box	10 pc(s).
<a href="#">1911890000</a>	SLDV-THR 5.00/32/180GLF 1.5SN BK BX	PCB plug-in connector, male header, closed side / solder flange, Reflow solder connection, 5.00 mm, No. of poles: 32, 180°, Solder pin length (l): 1.5 mm, tinned, Black, Box	IEC: 400 V / 15 A UL: 300 V / 10 A	4032248540044	Box	10 pc(s).

**SLD 5.00/90G**


2-tier male header with parallel pin arrangement. The solder pin length is optimised for wave flow soldering. The pin headers provide space for labelling and can be coded.

- 400 V (IEC) / 300 V (UL)
- 11 A (IEC) / 10 A (UL)

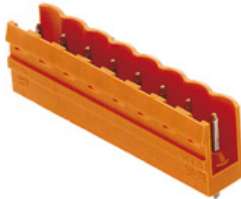
**General ordering data**

Order No.	Type	Version	Product data	GTIN (EAN)	Packaging	Qty.
<a href="#">1614490000</a>	SLD 5.00/32/90G 3.2 SN OR BX	PCB plug-in connector, male header, closed side, Solder connection, 5.00 mm, No. of poles: 32, 90°, Solder pin length (l): 3.2 mm, tinned, Orange, Box	IEC: 400 V / 11 A UL: 300 V / 10 A	4008190031220	Box	10 pc(s).

**BL/SL 5.00 series**  
**BL 5.00/16/180 SN BK BX**

**Mating connector (fully pluggable)**

**SL 5.00/180**



Male connectors with straight outlet direction. The solder pin length is optimised for wave flow soldering. The pin headers provide space for labelling and can be coded.

- 400 V (IEC) / 300 V (UL)
- 18 A (IEC) / 15 A (UL)

**General ordering data**

Order No.	Type	Version	Product data	GTIN (EAN)	Packaging	Qty.
<a href="#">1581460000</a>	SL 5.00/16/180 3.2SN OR BX	PCB plug-in connector, male header, open side, Solder connection, 5.00 mm, No. of poles: 16, 180°, Solder pin length (l): 3.2 mm, tinned, Orange, Box	IEC: 400 V / 18 A UL: 300 V / 15 A	4008190016456	Box	50 pc(s).

**SL 5.08/90**



Male connectors with 90° outlet direction. The solder pin length is optimised for wave flow soldering. The pin headers provide space for labelling and can be coded.

- 400 V (IEC) / 300 V (UL)
- 18 A (IEC) / 15 A (UL)

**General ordering data**

Order No.	Type	Version	Product data	GTIN (EAN)	Packaging	Qty.
<a href="#">1509460000</a>	SL 5.08/16/90 3.2SN OR BX	PCB plug-in connector, male header, open side, Solder connection, 5.08 mm, No. of poles: 16, 90°, Solder pin length (l): 3.2 mm, tinned, Orange, Box	IEC: 400 V / 18 A UL: 300 V / 15 A	4008190147464	Box	50 pc(s).

**BL/SL 5.00 series**  
**BL 5.00/16/180 SN BK BX**

**Mating connector (fully pluggable)**

**SL 5.00/90**



Male connectors with 90° outlet direction. The solder pin length is optimised for wave flow soldering. The pin headers provide space for labelling and can be coded.

- 400 V (IEC) / 300 V (UL)
- 18 A (IEC) / 15 A (UL)

**General ordering data**

Order No.	Type	Version	Product data	GTIN (EAN)	Packaging	Qty.
<a href="#">1571260000</a>	SL 5.00/16/90 3.2SN OR BX	PCB plug-in connector, male header, open side, Solder connection, 5.00 mm, No. of poles: 16, 90°, Solder pin length (l): 3.2 mm, tinned, Orange, Box	IEC: 400 V / 18 A UL: 300 V / 15 A	4008190136192	Box	50 pc(s).

**SL-SMT 5.00/180 Box**



High-temperature-resistant, straight, open ended male header. Packed in box or tape. In tape with 1.5 mm solder pin optimised for automatic assembly. 3.2 mm solder pin suitable for reflow and wave soldering. These male connectors provide space for labelling and can be coded.

- 400 V (IEC) / 300 V (UL)
- 19 A (IEC) / 15 A (UL)

**General ordering data**

Order No.	Type	Version	Product data	GTIN (EAN)	Packaging	Qty.
<a href="#">1796620000</a>	SL-SMT 5.00/16/180 1.5SN BK BX	PCB plug-in connector, male header, open side, Reflow solder connection, 5.00 mm, No. of poles: 16, 180°, Solder pin length (l): 1.5 mm, tinned, Black, Box	IEC: 400 V / 19 A UL: 300 V / 15 A	4032248237241	Box	50 pc(s).
<a href="#">1841070000</a>	SL-SMT 5.00/16/180 3.2SN BK BX	PCB plug-in connector, male header, open side, Reflow solder connection, 5.00 mm, No. of poles: 16, 180°, Solder pin length (l): 3.2 mm, tinned, Black, Box	IEC: 400 V / 19 A UL: 300 V / 15 A	4032248351954	Box	50 pc(s).

**BL/SL 5.00 series**  
**BL 5.00/16/180 SN BK BX**

**Mating connector (fully pluggable)**

**SL-SMT 5.08/90G Box**



High-temperature-resistant male header, packed in box or tape. In tape with 1.5 mm solder pin optimised for automatic assembly. 3.2 mm solder pin suitable for reflow and wave soldering. These male connectors provide space for labelling and can be coded.

- 400 V (IEC) / 300 V (UL)
- 19 A (IEC) / 15 A (UL)

**General ordering data**

Order No.	Type	Version	Product data	GTIN (EAN)	Packaging	Qty.
<a href="#">1780320000</a>	SL-SMT 5.08/16/90G 3.2SN BK BX	PCB plug-in connector, male header, closed side, Reflow solder connection, 5.08 mm, No. of poles: 16, 90°, Solder pin length (l): 3.2 mm, tinned, Black, Box	IEC: 400 V / 19 A UL: 300 V / 15 A	4032248165643	Box	50 pc(s).
<a href="#">1775142001</a>	SL-SMT 5.08/16/90G 1.5SN BK BX	PCB plug-in connector, male header, closed side, Reflow solder connection, 5.08 mm, No. of poles: 16, 90°, Solder pin length (l): 1.5 mm, tinned, Black, Box	IEC: 400 V / 19 A UL: 300 V / 15 A	4032248156719	Box	50 pc(s).

**SL 5.00/135**



Male connectors with 135° outlet direction. The solder pin length is optimised for wave flow soldering. The pin headers provide space for labelling and can be coded.

- 400 V (IEC) / 300 V (UL)
- 17 A (IEC) / 15 A (UL)

**General ordering data**

Order No.	Type	Version	Product data	GTIN (EAN)	Packaging	Qty.
<a href="#">1630390000</a>	SL 5.00/16/135 3.2SN OR BX	PCB plug-in connector, male header, open side, Solder connection, 5.00 mm, No. of poles: 16, 135°, Solder pin length (l): 3.2 mm, tinned, Orange, Box	IEC: 400 V / 17 A UL: 300 V / 15 A	4008190203818	Box	50 pc(s).

**BL/SL 5.00 series**  
**BL 5.00/16/180 SN BK BX**
**onlinecomponents.com**  
THE ONLINE DISTRIBUTOR OF ELECTRONIC COMPONENTS
**Weidmüller Interface GmbH & Co. KG**

 Klingenbergstraße 16  
 D-32758 Detmold  
 Germany

Fon: +49 5231 14-0

Fax: +49 5231 14-2083

www.weidmueller.com

**Mating connector (fully pluggable)**
**SL-SMT 5.00/90 Box**


High-temperature-resistant, 90° angled, open male header  
 Packed in box or tape. In tape with 1.5 mm solder pin  
 optimised for automatic assembly. 3.2 mm solder pin suitable  
 for reflow and wave soldering. These male connectors provide  
 space for labelling and can be coded.

- 400 V (IEC) / 300 V (UL)
- 19 A (IEC) / 15 A (UL)

**General ordering data**

Order No.	Type	Version	Product data	GTIN (EAN)	Packaging	Qty.
<a href="#">1797070000</a>	SL-SMT 5.00/16/90 1.5SN BK BX	PCB plug-in connector, male header, open side, Reflow solder connection, 5.00 mm, No. of poles: 16, 90°, Solder pin length (l): 1.5 mm, tinned, Black, Box	IEC: 400 V / 19 A UL: 300 V / 15 A	4032248237852	Box	50 pc(s).
<a href="#">1840030000</a>	SL-SMT 5.00/16/90 3.2SN BK BX	PCB plug-in connector, male header, open side, Reflow solder connection, 5.00 mm, No. of poles: 16, 90°, Solder pin length (l): 3.2 mm, tinned, Black, Box	IEC: 400 V / 19 A UL: 300 V / 15 A	4032248350773	Box	50 pc(s).

**SLDV-THR 5.00/180G**


High-temperature resistant, double level, laterally offset,  
 closed ended male header, with solder flange option. 1.5  
 mm solder pin suitable for reflow soldering. 3.2 mm solder  
 pin suitable for reflow and wave soldering. The pin headers  
 provide space for labelling and can be coded.

- 400 V (IEC) / 300 V (UL)
- 15 A (IEC) / 10 A (UL)

**General ordering data**

Order No.	Type	Version	Product data	GTIN (EAN)	Packaging	Qty.
<a href="#">1895120000</a>	SLDV-THR 5.00/32/180G 1.5SN BK BX	PCB plug-in connector, male header, closed side, Reflow solder connection, 5.00 mm, No. of poles: 32, 180°, Solder pin length (l): 1.5 mm, tinned, Black, Box	IEC: 400 V / 15 A UL: 300 V / 10 A	4032248509836	Box	10 pc(s).
<a href="#">1882800000</a>	SLDV-THR 5.00/32/180G 3.2SN BK BX	PCB plug-in connector, male header, closed side, Reflow solder connection, 5.00 mm, No. of poles: 32, 180°, Solder	IEC: 400 V / 15 A UL: 300 V / 10 A	4032248486373	Box	10 pc(s).

**BL/SL 5.00 series  
BL 5.00/16/180 SN BK BX**

**Weidmüller Interface GmbH & Co. KG**  
Klingenbergstraße 16  
D-32758 Detmold  
Germany  
Fon: +49 5231 14-0  
Fax: +49 5231 14-2083  
www.weidmueller.com

**Mating connector (fully pluggable)**

pin length (l): 3.2 mm, tinned,  
Black, Box

**SL-SMT 5.00/90G Box**



High-temperature-resistant male header, packed in box or tape. In tape with 1.5 mm solder pin optimised for automatic assembly. 3.2 mm solder pin suitable for reflow and wave soldering. These male connectors provide space for labelling and can be coded.

- 400 V (IEC) / 300 V (UL)
- 19 A (IEC) / 15 A (UL)

**General ordering data**

Order No.	Type	Version	Product data	GTIN (EAN)	Packaging	Qty.
<a href="#">1840260000</a>	SL-SMT 5.00/16/90G 3.2SN BK BX	PCB plug-in connector, male header, closed side, Reflow solder connection, 5.00 mm, No. of poles: 16, 90°, Solder pin length (l): 3.2 mm, tinned, Black, Box	IEC: 400 V / 19 A UL: 300 V / 15 A	4032248351008	Box	50 pc(s).
<a href="#">1797220000</a>	SL-SMT 5.00/16/90G 1.5SN BK BX	PCB plug-in connector, male header, closed side, Reflow solder connection, 5.00 mm, No. of poles: 16, 90°, Solder pin length (l): 1.5 mm, tinned, Black, Box	IEC: 400 V / 19 A UL: 300 V / 15 A	4032248238002	Box	50 pc(s).