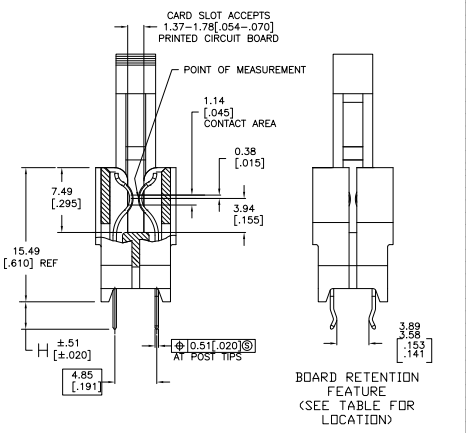
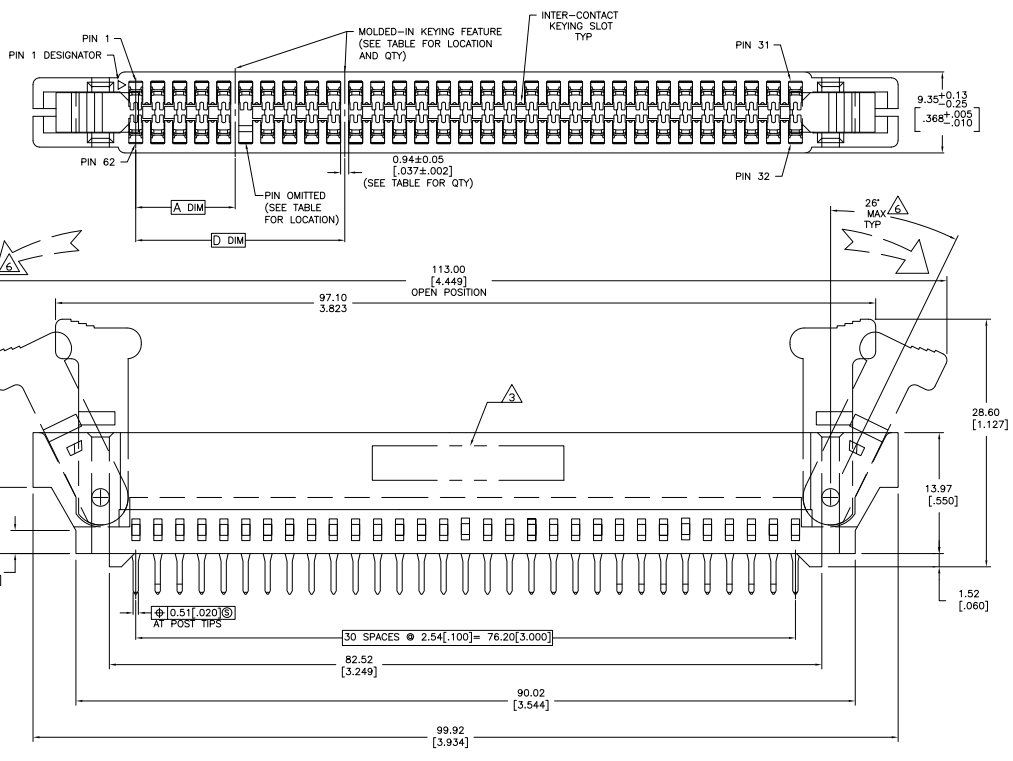


THIS DRAWING IS UNPUBLISHED
 UNLESS INDICATED OTHERWISE
 © 2005 BY THE ELECTRONIC CORPORATION ALL RIGHTS RESERVED

REV	DATE	DESCRIPTION	BY	APP
AA	00			
N	02-08-2005			

- MATERIAL:
 HOUSING: GLASS FILLED POLYESTER; COLOR: BLACK.
 CONTACT: HIGH CONDUCTIVITY COPPER ALLOY
 LATCH: GLASS FILLED POLYESTER, COLOR: (SEE TABLE)
- FINISH:
 0.00038[.00015] GOLD PLATE IN CONTACT AREA,
 0.00254[.000100] MIN TH-LEAD ON SOLDER POSTS, ALL
 OVER 0.00127[.000050] MIN NICKEL
- AMP LOGO, TE PART NUMBER, DATE CODE AND CSA LOGO INK
 STAMPED WHITE (NOT STAMPED OR LAZER PRINTED) IN THE APPROXIMATE
 AREA SHOWN, EITHER SIDE PERMISSABLE, WHEN HOUSING SIZE PERMITS
- DATUMS AND BASIC DIMENSIONS ESTABLISHED BY CUSTOMER
- CONNECTORS SHOWN ARE USED IN APPLICATIONS WITH VRM MODULES WEIGHING
 3 OUNCES OR LESS. ALTERNATE CONNECTOR AND LATCH METHOD IS AVAILABLE FOR
 VRM MODULES WEIGHING UP TO 6 OUNCES.
- CAUTION: LATCHES ARE INTENDED FOR RETENTION OF PC BOARD TO CONNECTOR.
 DO NOT ATTEMPT TO FULLY EJECT PC BOARD FROM CONNECTOR WHILE DISENGAGING
 LATCHES. DAMAGE TO LATCHES AND OR CONNECTOR MAY OCCUR



CONSULT 1489930-5
 PART NUMBER

LATCH COLOR	H	E	D	B	A	RETENTION LOCATION	KEYING FEATURE	MOLDED-IN KEYING FEATURE	OMITTED PIN	VRM TYPE	DUAL PIN	PART NUMBER
WHITE	4.75 [187]	-	-	-	-	2,3, 29,30, 33,34, 60,61	NNN	NNN	-	31	1489930-4	
WHITE	318 [126]	-	-	-	-	2,3, 29,30, 33,34, 60,61	NNN	NNN	-	31	1489930-4	
WHITE	318 [126]	23,25 [943]	21,52 [850]	8,71 [342]	6,35 [250]	2,3, 29,30, 33,34, 60,61, 3,4, 8, 9,10	37	-	31	1489930-3		
BLACK	318 [126]	26,49 [1043]	24,13 [950]	-	-	2,3, 29,30, 33,34, 60,61	1011	37	101 +12	31	1489930-2	
BLACK	318 [126]	26,49 [1043]	24,13 [950]	13,79 [543]	11,43 [450]	2,3, 29,30, 33,34, 60,61, 5,6, 6, 10,11	37	101 +12	31	1489930-1		

THIS DRAWING IS A CONTROLLED DOCUMENT. DATE: 02/08/05 BY: J.L.MAYER

REVISIONS: 108-2148

114-13018

CONNECTOR ASSEMBLY
 HIGH CURRENT CARD EDGE
 DUAL POSITION, 2.54 [1.00] CENTERLINE

DATE: 02/08/05 DRAWING NO: 100779 Q=1489930

CUSTOMER DRAWING

