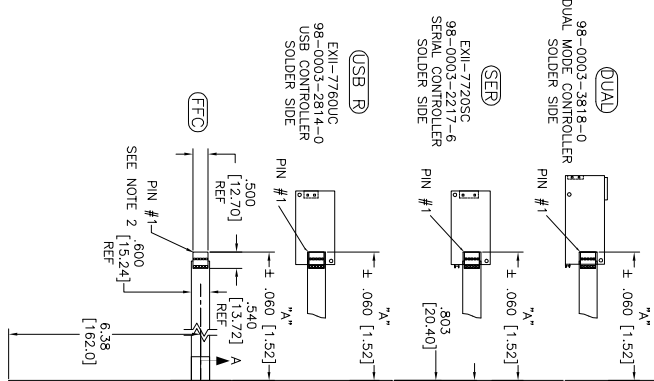
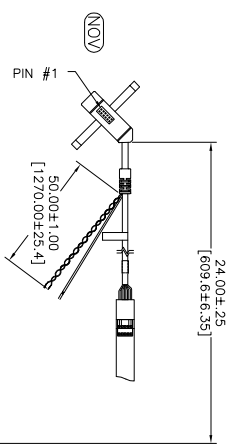
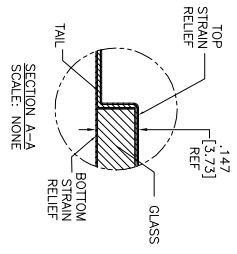


OGA DIAGONAL: 20.14 [511.67]
 VA DIAGONAL: 19.42 [493.33]
 PA DIAGONAL: 18.31 [465.08]

ESD CLAMSHELL CASE IS USED WITH ALL NOV, USB AND SER TERMINATIONS.



1.42±.020 [374.51]
 TOTAL THICKNESS OF GLASS CABLE AND STRAIN RELIEF

TOP LEVEL NUMBER	US NUMBER	CHINA NUMBER	TYPE	DM "A" (TOTAL GLASS TO CONNECTOR)	A/G FINISH	PROD SPEC
17-8891-204	98-0003-2860-7	N/A	FFC	6.00" [152.40]	AG500	23655
17-8891-223	98-0003-2863-1	N/A	SER	6.00" [152.40]	AG500	23655
17-8891-220	98-0003-3124-3	N/A	USB R	6.00" [152.40]	AG500	23655
17-8891-206	98-0003-2201-0	N/A	NOV	SEE DWG	AG500	23655
17-8891-205	98-0003-2861-5	59-0000-0078-2	FFC	8.00" [203.20]	AG500	23655
17-8891-227	98-0003-2955-1	59-0000-0009-7	SER	8.00" [203.20]	AG500	23655
17-8891-226	98-0003-2864-9	59-0000-0008-9	USB R	8.00" [203.20]	AG500	23655
N/A	98-0003-3819-8	N/A	DUAL	6.00" [152.40]	AG500	23655

15.591 [396.01] OUTER GLASS AREA
 15.051 [382.29] VIEWING AREA
 14.186 [360.32] PRECISION AREA

11.577 [294.06] PRECISION AREA
 12.276 [311.81] VIEWING AREA
 12.756 [324.00] OUTER GLASS AREA

- NOTES:
1. WEIGHT OF GLASS IN GRAMS: 978±10%
 2. NICOMATIC HOUSING P/N: 0105
 3. NICOMATIC RECEPTACLES (PINS) MATTE TIN PLATED P/N: 14106-12
 4. HOUSING ORIENTED WITH LATCH DOWN

PINOUT	1	2	3	4	5
LR	LL	SHLD	UR		

UNITS INCHES [MM]

TOLERANCES UNLESS OTHERWISE SPECIFIED

X ±.03 [.76]
 .XX ±.015 [.38]
 .XXX ±.01 [.25]
 ANGLES ±1°

THIRD ANGLE PROJECTION

DO NOT SCALE DRAWING

SCALE 1 = 1

DMW MDS 6/19/06



© COPYRIGHT 2004 3M TOUCH SYSTEMS
 THIS DOCUMENT IS THE PROPERTY OF 3M TOUCH SYSTEMS AND IS NOT TO BE REPRODUCED OR TRANSMITTED IN ANY FORM OR BY ANY MEANS WITHOUT THE WRITTEN PERMISSION OF 3M TOUCH SYSTEMS.

REV	DESCRIPTION	DATE	BY
J	REVISE PER CO 033533	11/11	SB
H	REVISE PER CO 033034	11/11	SB
G	REVISE PER CO 033034	11/11	SB

MARKETING DRAWING
 SCT32NN 19.42"

REV	DESCRIPTION	DATE	BY
C	AUTOCAD		J

32144-MKT