

PLEASE CHECK WWW.MOLEX.COM FOR LATEST PART INFORMATION

Part Number: [1061261300](#)
Status: **Active**
Overview: [Optical Connectivity Solutions](#)
Description: LC Adapter, Duplex, Blue Body, Ceramic Alignment Sleeve, Screw Mount Style, SC Footprint

Documents:

[Drawing \(PDF\)](#) [Product Literature \(PDF\)](#)
[RoHS Certificate of Compliance \(PDF\)](#)

General

Product Family	Fiber Optic Adapters
Series	106126
Component Type	Standard
Mode	Singlemode
Overview	Optical Connectivity Solutions
Product Literature Order No	987650-1589
Product Name	LC
Type	Adapter
UPC	822350278379

Physical

Alignment Sleeve	Ceramic
Angled Physical Contact (APC)	No
Color - Resin	Blue
Ferrule Material	Ceramic
Gender	Female-Female
Material - Housing	Polymer
Mounting Style	Screws
Net Weight	5.682/g
Orientation	Straight
Panel Mount	With Flange
Ports	2
Shutter	No

Electrical

Shield Type	N/A
Shielded	No

Solder Process Data

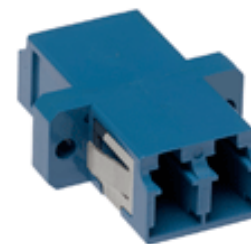
Lead-freeProcess Capability	N/A
-----------------------------	-----

Material Info

Engineering Number	861261300
--------------------	-----------

Reference - Drawing Numbers

Sales Drawing	SD-106126-X3X0
---------------	----------------



Series image - Reference only

EU ELV

Not Relevant

EU RoHS

Compliant

REACH SVHC

Not Contained Per -
ED/21/2016 (20 June
2016)

Halogen-Free

Status

Not Low-Halogen

**Need more information on product
environmental compliance?**

Email productcompliance@molex.com
Please visit the [Contact Us](#) section for any
non-product compliance questions.

China ROHS

ELV

RoHS Phthalates

Green Image

Not Relevant

Not Contained

Search Parts in this Series

[106126 Series](#)

PLEASE CHECK WWW.MOLEX.COM FOR LATEST PART INFORMATION